



INTEGRATED DESIGN SOLUTIONS

Design is where science and art break even

Robin Mathew

Contents



Introduction _____	3
Integrated flooring solutions _____	6
Real sustainability _____	8
Design in use _____	10
Lasting impressions _____	12
Lasting impressions – Entrances _____	14
Corporate identity – Brands and logos _____	16
Corporate identity – Bespoke colours _____	18
Design features _____	20
Design features – Simple combinations _____	22
Design features – Bespoke elements _____	24
Design features – It’s in the detail _____	26
Design features – Design elements _____	28
Design features – Designating walkways and areas _____	30
Design features – Modularity _____	32
Design features – Colour connections _____	34
You’re thinking individuality we’re thinking unique solutions _____	36
Unique solutions – Digital print Flotex _____	38
Unique solutions – Digital print vinyl _____	40
You’re thinking design floors we’re thinking let us do the work _____	42
Residential options _____	44
Room planner _____	46
The next step _____	47

Creative design for floors

The floor is a crucial element of a building’s interior design; creating the first impression and setting the tone. Our tantalising range of colours, textures and products will provide you with endless creative possibilities.

Whether you are looking to recreate a complex logo or design feature, match that perfect colour for your interior or visualise an entire flooring design scheme, we have the knowledge and technology to help and guide you every step of the way. From the conception of your idea, through to the production and final installation, our in house team of design experts have the skills and experience to take your ideas and turn them into reality. The resulting designs retain all the performance characteristics of the original product.

The following pages aim to provide you with information on Forbo and how our products can be used to create innovative, design led floors.





You're thinking time is precious, we're thinking, we agree

Why deal with multiple suppliers when you can deal with one? Forbo Flooring Systems is a global producer of flooring solutions. We pride ourselves on offering a truly comprehensive product portfolio with leading edge products specifically designed to cater for each area of a project, from the entrance, through circulation and communal zones, to each individual space in the building.

We are also a major British manufacturer with five UK manufacturing plants employing more than 500 UK staff.

Our flooring solutions offer includes:-

- Environmentally friendly, functional and design-oriented Marmoleum
- An extensive range of sheet Project vinyls, Acoustic vinyls and Safety vinyls
- Static control flooring for areas with sensitive electronic equipment
- High quality European manufactured Luxury Vinyl Tiles
- Entrance flooring systems that keep interior floors clean, dry and safe
- Carpet tiles for both public and commercial environments
- Flocked sheet and tile for areas that need the benefits of both textile and resilient floor coverings
- Cushioned vinyls for the home

With a range of subfloor systems, Eurocol adhesives and Floor Care products to complete this extensive and versatile product portfolio, Forbo Flooring Systems can deliver 'integrated solutions' for every project. The single source solution overcomes the need for multiple supplier visits and provides total accountability across the project, saving you valuable time, money and providing peace of mind. This brochure details our solutions for design floors. For information on any of our product ranges, please ring **0800 731 2369**.

Forbo's products are available in a vast array of colourways and offer a wide choice of performance attributes. Flooring installations in a variety of application areas ranging from hospitals and schools to airports and designer shops are proof that Forbo offers modern, versatile, high performing floor coverings.

The following pages provide inspiration on the colours and structures of many of our collections in various market sectors.

◀ **Taking care of your floor**
A selection of some of the thousands of men and women that create Forbo floor coverings in our 12 manufacturing sites across Europe, including five in the UK.

Forbo – Integrated flooring solutions

Linoleum



marmoleum[®]
marmoleum[®] dual
marmoleum[®] decibel
marmoleum[®] ohmex
marmoleum[®] sport
bulletin board[®]
furniture linoleum[®]

Project vinyl



eternal – General purpose vinyl
allura[®] – Luxury vinyl tiles
flex design – Loose lay vinyl tiles
step[®] – Safety vinyl
sarlon[®] – Acoustic vinyl
colorex[®] – Static control flooring
floorink – Bespoke digitally printed vinyl

Flotex flocked flooring



flotex[®] sottsass
flotex[®] HD
flotex[®] naturals
flotex[®] classic
flotex[®] tiles

Carpet tiles



tessera[®] – Tufted carpet tiles
westbond[®] – Fusion bonded carpet tiles

Entrance



coral[®] – Textile entrance flooring
nuway[®] – Engineered entrance flooring

You're thinking real sustainability,

As a global leader in flooring systems we have a responsibility to all of our stakeholders, to create a better environment. The way we serve and drive the market sets the pace and standard for world class flooring solutions. Sustainable development and 'creating better environments' are integral parts of all of Forbo Flooring Systems' activities.

We're fully committed to reducing our impact upon the environment, not only in the way we run our manufacturing sites but also in terms of our actions and operations beyond the factory boundaries.

We've adopted a lifecycle approach in order to identify every possible opportunity to improve our use of scarce resources, eliminate waste, maximise efficiency and recycle and reuse materials.

Creating better environments

Our target

To continuously minimise the environmental impact of Forbo Flooring Systems as measured by the weighted Life Cycle Assessment measurement system by 25% before the end of 2015 (cf 2009).

Measurement

Forbo uses Life Cycle Assessment (LCA) as the independent methodology of measuring our impact on the environment.

Measuring our LCA

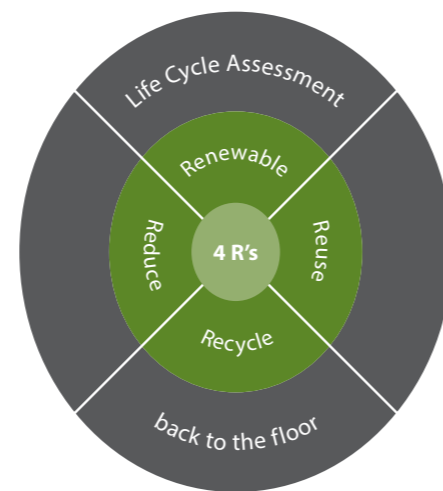
The LCA is calculated for 1m² installed floor covering from cradle to installation. We based our LCA calculation on the weighed mass of all the products we produced. We also included the energy consumption of all our offices and warehouses worldwide.

When evaluating our LCA, we took into account the following environmental impact categories:

- Acidification potential
- Eutrophication potential
- Ozone layer depletion potential
- Photo oxidant creation potential
- Abiotic depletion potential
- Global warming potential

We shall achieve our target by applying Forbo's 4 R's:

The 4 R's are at the heart of Forbo's efforts to reduce our impact on the environment and are important indicators in our quest to become a more sustainable company.



we're thinking responsible action

Here are some examples of how we have used the 4 R's principle to implement responsible actions.

Ever improving production technologies

- Improving yarn yields by 14% through better edge control for our textile products.
- Using a new tufting technology for carpet tiles, resulting in fewer raw materials used.
- Eliminating trimming waste by 85% in carpet tiles by using new ultrasonic cutting technology.
- Adjusting the formula of recipes to maximise the use of recycled material e.g. Tessera Weave and Create Space contain up to 100% regenerated Econyl yarn.
- The Eternal project vinyl collection shows a 4% improved LCA score over the previous range.

By making use of modern production processes, we reduce our raw material usage and minimise and reduce waste wherever possible

- Reaching a material efficiency in Marmoleum production of 98% of the entire volume produced. All materials that ordinarily would go to waste are brought back into the production process.
- Reducing the required need of 'virgin' PVC material.
- Reducing bitumen usage in carpet tile production by 15% through process improvements.
- Optimisation of the reuse of vinyl waste. It is processed into the backing of our other vinyl floor coverings.

Primary raw materials are replaced by alternatives

- Creating alternatives of bio based material compositions.
- Replacing linseed oil and rosin in our Marmoleum with a percentage of tall oil (a left over product from the paper industry), thereby reusing materials that otherwise would have no purpose.

Use left over products from other industries or recycling pre and post consumer waste

- Operating our 'Back to the Floor' scheme for collecting and reprocessing installation off-cuts back into Forbo products.
- Producing Westbond carpet tiles with a backing comprising up to 74% recycled materials.
- Producing Eternal and Step products that contain up to 40% of recycled post industrial waste in the backing layer of the product.
- Producing Marmoleum with 43% recycled post industrial waste and 97% natural raw materials.
- Producing a Flotex tile backing made from re-used and pre consumer waste. Waste comes from other production sites within Forbo, but also from outside Forbo to optimise waste streams from external textile flooring companies.

Commercial process

- Optimising a sample take back programme for both reuse and recycling.



Energy usage

- Over 95% of our electricity in our 12 production plants comes from renewable resources.
- Opportunity to build a wind turbine on the Ripley plant, which can provide one third of the plant's electricity needs.

Our products in use, cleaning and maintenance

- Engineering our resilient products such as vinyl and Marmoleum in a way that dry/spray maintenance can be advised in most cases thus reducing the amount of cleaning products and detergents.
- Engineering high end durable coatings like PUR-pearl for vinyl and Topshield2 for Marmoleum that extend the economic life of the floor covering. The Topshield2 finish allows complete renovation of the Marmoleum and extends the product's useful life even more. Renovating the top layer of a Marmoleum floor results in nearly 14% LCA improvement on global warming potential.

Design in use

No matter what kind of project you are working on, products from across our wide portfolio can be used together or on their own to bring a unique and appealing touch to any interior scheme.

Workspaces are increasingly becoming areas where creativity and design can have an impact on those who do business there.

Our textile and resilient ranges suit every type of workspace, from the most dynamic and vibrant spaces to more subdued and formal surroundings.

With large collections of sheet and tile, our portfolio provides a wide choice of colours and textures with which to create both stimulating and relaxing environments.



Project facts:
Bristol's new Flagship museum, M Shed, features a large 150sqm Floorink print, providing an interactive visitor attraction to the ground floor



Project facts:
Marmoleum has been used to provide a neutral background allowing the furniture to provide the colour in this striking installation in Santiago, Chile.



Project facts:
To achieve a luxurious ambience in the reception area of the offices of Leaseplan UK, Crisp Designed specified Westbond carpet tiles in a bespoke black pepper colourway with a sprinkling of orange ginger.

From nurseries to academies and universities, create stylish yet low maintenance floors that bring education to life.



From reception areas to patient bedrooms, our collections of resilient floor coverings can be used to create striking bespoke designs without compromising on performance.



Project facts:
Marmoleum real, cut using Aquajet technology, has been specified for Frome Community Hospital to create a striking, bespoke design, aimed at enhancing the healing environment. Comprising 28 patient rooms, the hospital required a flooring system that could withstand the daily wear and tear of a healthcare environment, as well as create a relaxing atmosphere for patients and visitors.

Please note: Digital representations may vary from the actual product. Please order a sample to see the full effect. Contact 0800 731 2369.

You're thinking lasting impressions

When it comes to making a good impression, entrance areas are the ideal opportunity to make a first impression, your first opportunity to promote your company and its values.

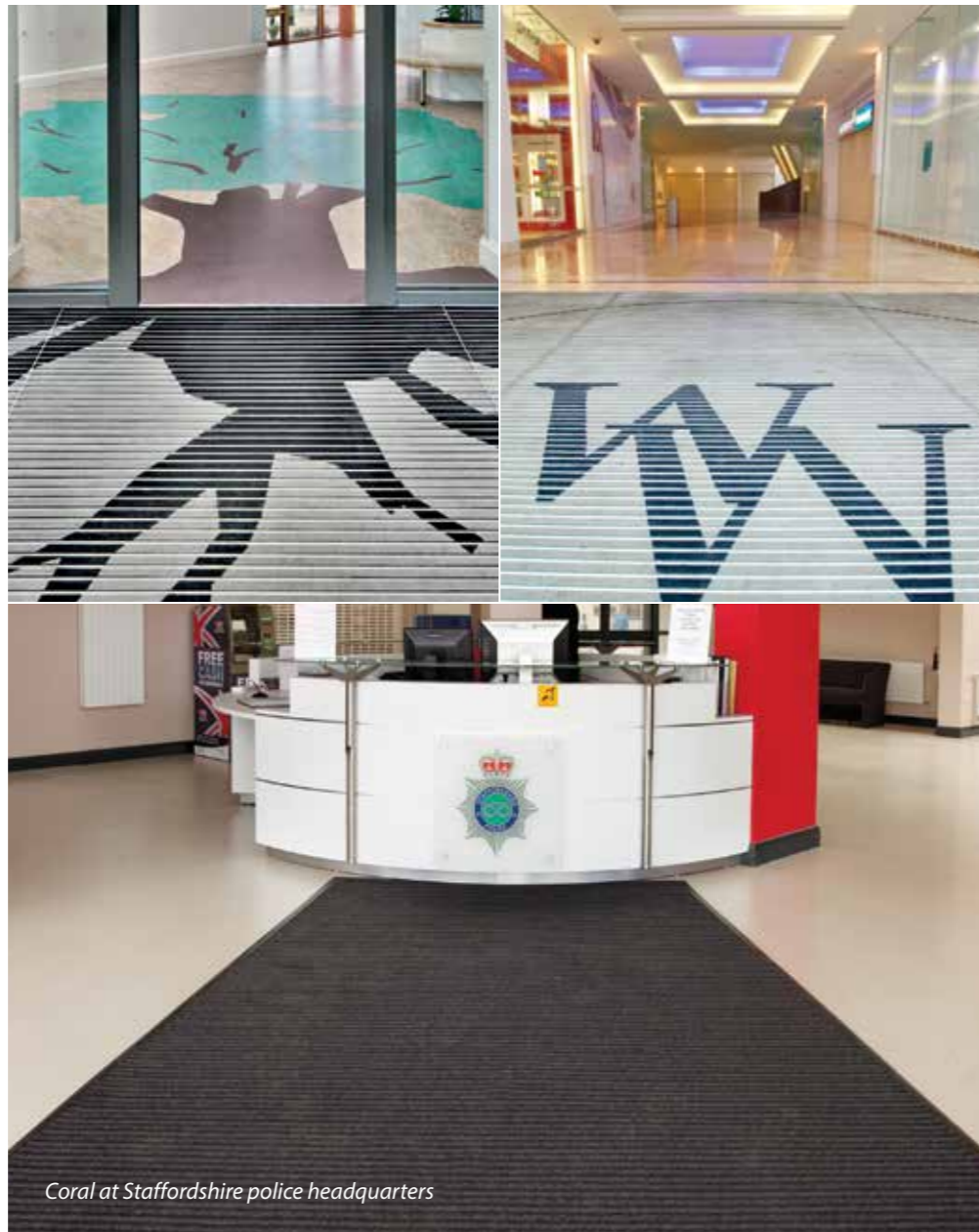
As well as providing a high performance entrance system our Nuway engineered mats and Coral textile "clean off" systems both offer the opportunity for unique design solutions.

As Entrance Systems help to keep interior finishes clean and dry, they also ensure that your flooring design makes a lasting impression.

Project facts:

In Waterford Regional Hospital, Nuway and Marmoleum have been used to create a striking and friendly entrance.

Opposite: Nuway Tuftiguard at Whitewater shopping centre

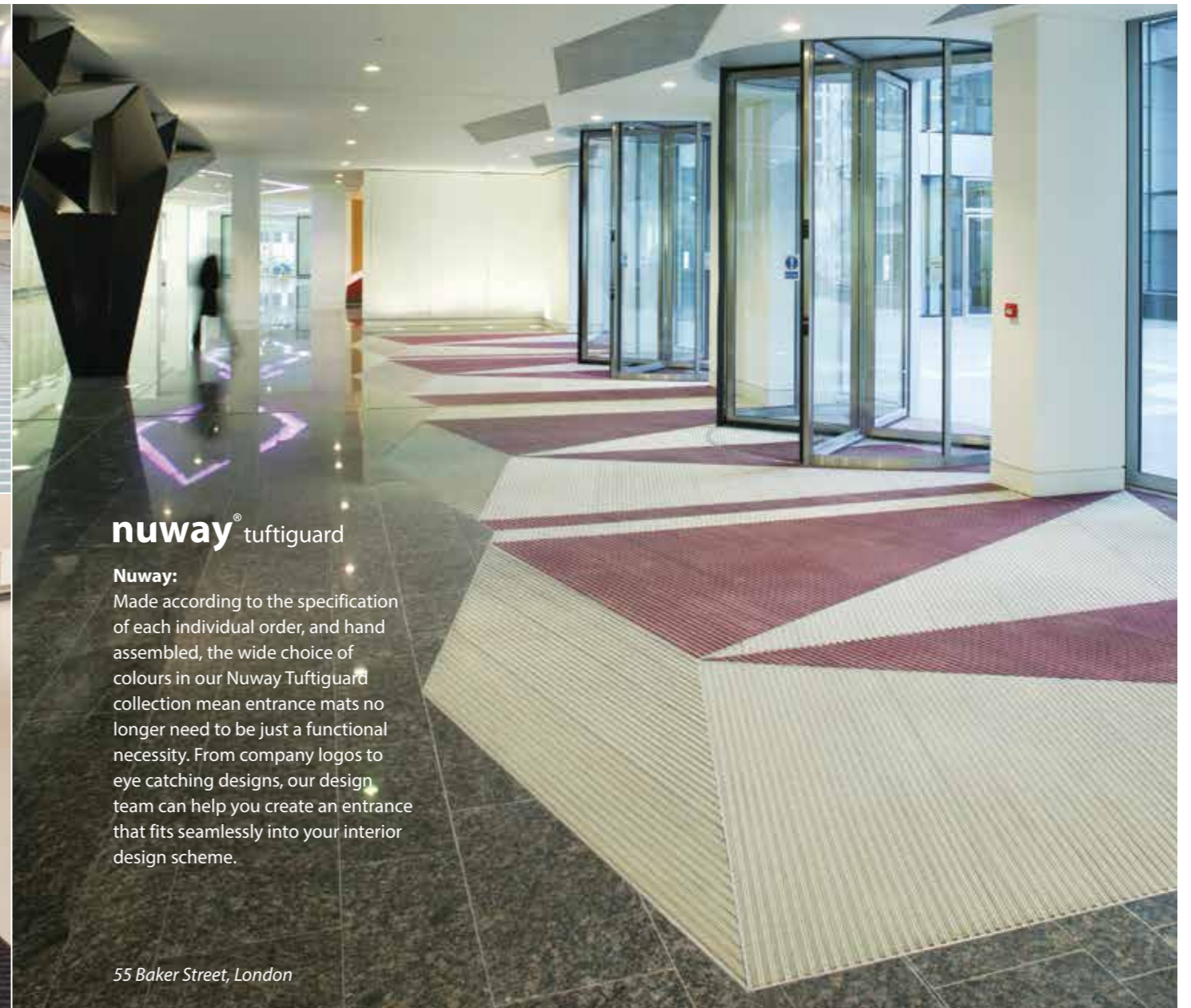


Coral at Staffordshire police headquarters

we're thinking entrances and beyond

When it comes to reflecting the personality of a company, brand or building, the design of the floor can play a huge role.

Whether you are looking to make a statement in an entrance or reception area, or subtly reflect corporate identity into offices and breakout areas, Forbo can offer a range of design options across our wide product portfolio to help you.



nuway[®] tuftiguard

Nuway: Made according to the specification of each individual order, and hand assembled, the wide choice of colours in our Nuway Tuftiguard collection mean entrance mats no longer need to be just a functional necessity. From company logos to eye catching designs, our design team can help you create an entrance that fits seamlessly into your interior design scheme.

55 Baker Street, London

Please note: Digital representations may vary from the actual product. Please order a sample to see the full effect. Contact 0800 731 2369.

Lasting impressions – Entrances

An effective entrance flooring system can prolong the life of interior floor coverings and prevent slip injuries. It can also add colour and design to any interior scheme.

Project facts:

Coral and Nuway Tuftguard were used in an installation at Loughborough University that was voted 'Installation of the year' by the Contract Flooring Association.



Project facts:

Coral Welcome entrance product – a striking linear aesthetic combined with 100% regenerated yarn and a primary backing made from recycled pop bottles.



Project facts:

To guarantee a lasting first impression, Newport City council's architects took advantage of Coral Logo's design service to include their brand identity in a major refurbishment project to transform a historic railway building into a public service 'hub'.

coral®

Coral inset logo Mat:

Our Coral textile systems afford you the choice of up to four colours per design from our extensive collection, all precision cut to give you a design feature that doesn't compromise on performance.

Coral printed logo mat:

When it comes to replicating more complex designs or matching that perfect colour or corporate tint, our Coral Logo digitally printed mats provide the ideal solution. Printed on a specially manufactured base, with the option to choose up to 16 colours from our bank of 42 standard colours, entrances can be turned into works of art. We can even reproduce Pantone or RAL colours if the occasion calls for it, giving you complete control over every aspect of your design.



Please note: Digital representations may vary from the actual product. Please order a sample to see the full effect. Contact 0800 731 2369.

Corporate identity – Brands and logos

Virtually all our floor coverings can be cut to recreate logos, offering endless opportunity for design. With the precision to cut widths of just a few millimetres, the most intricate of designs can be reproduced to stunning effect.



Logo design using our unique Aquajet technology

Working from almost any type of file, our Aquajet design team can recreate your company logos and crests at any scale. And with over 160 colourways to choose from in the Marmoleum collection alone, finding the perfect combination of colours is easy.

For areas that require the softer feel of a textile floor covering, our carpet tiles and Flotex collections can be specially cut to create spectacular central features.



Project facts

Durham University was able to recreate its shield and motto thanks to the extensive colour palette of Tessera Sheerpoint carpet tiles.



Project facts

Flotex flocked flooring has been used to create an impressive military logo at The Tower of London.

Please note: Digital representations may vary from the actual product. Please order a sample to see the full effect. Contact 0800 731 2369.

Corporate identity – Bespoke colours

Corporate Identity is often defined by a specific corporate colour, giving unity across brochures, point of sale and advertising. Why not bring this colour to life as part of your interior design scheme?

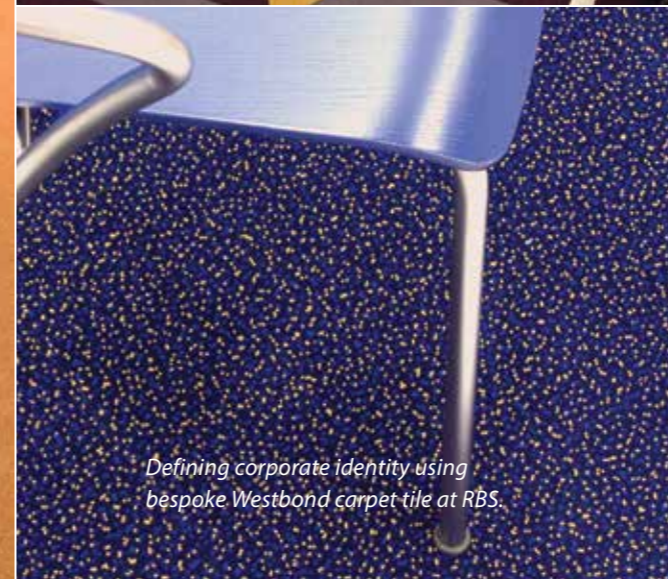


westbond™

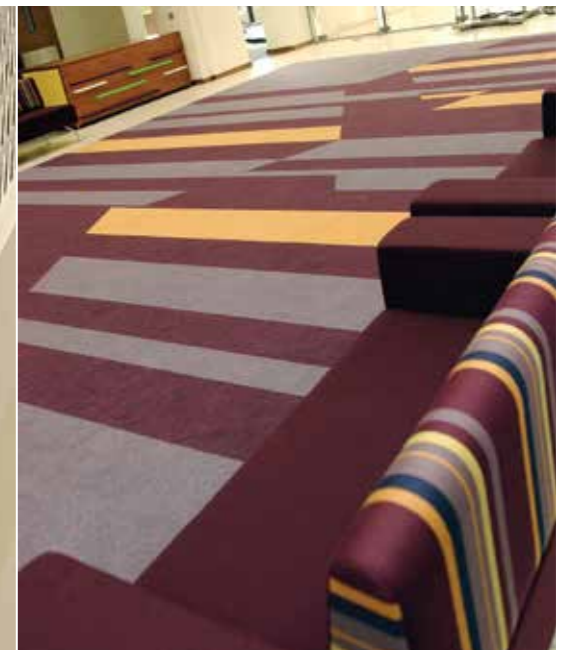
Bespoke colours:
Synonymous with total flexibility and sophistication, our Westbond fusion bonded carpet tiles allow you to take control of the process of designing luxurious, bespoke carpet tiles to any colour of your choice and with no minimum order quantity.



Bespoke Westbond carpet tiles used to reflect the corporate colours of Shell.



Defining corporate identity using bespoke Westbond carpet tile at RBS.



Project facts:

Bespoke colour carpet tiles were used to recreate the Eversheds interlocking logo at their offices in Leeds.



Project facts:

When GHD wanted a breathtaking design for their new Leeds headquarters, they felt that the luxurious Westbond tiles embodied the company's mantra of 'fashion, style and image.'

Please note: Digital representations may vary from the actual product. Please order a sample to see the full effect. Contact 0800 731 2369.

You're thinking design features

Whether it's a school, office or a hospital, flooring in any area of a building can be used to add interest and character through the use of a design feature, no matter what the product.

From the quirky and unique, to designating walkways and break out areas, products from across our portfolio can be used to create bespoke designs that are inspirational as well as functional.

Project facts

Colours from the Marmoleum collection were combined with Allura to create a stunning look for the Specialized UK flagship store.



Project facts

The Flotex Sottsass wool design has been used at Brace Place dentistry to provide a colourful yet calming interior.

we're thinking we can help



Project facts

Marmoleum has been used to create a colourful and inspiring yet highly practical floor for The Eden Project's impressive education centre, The Core.

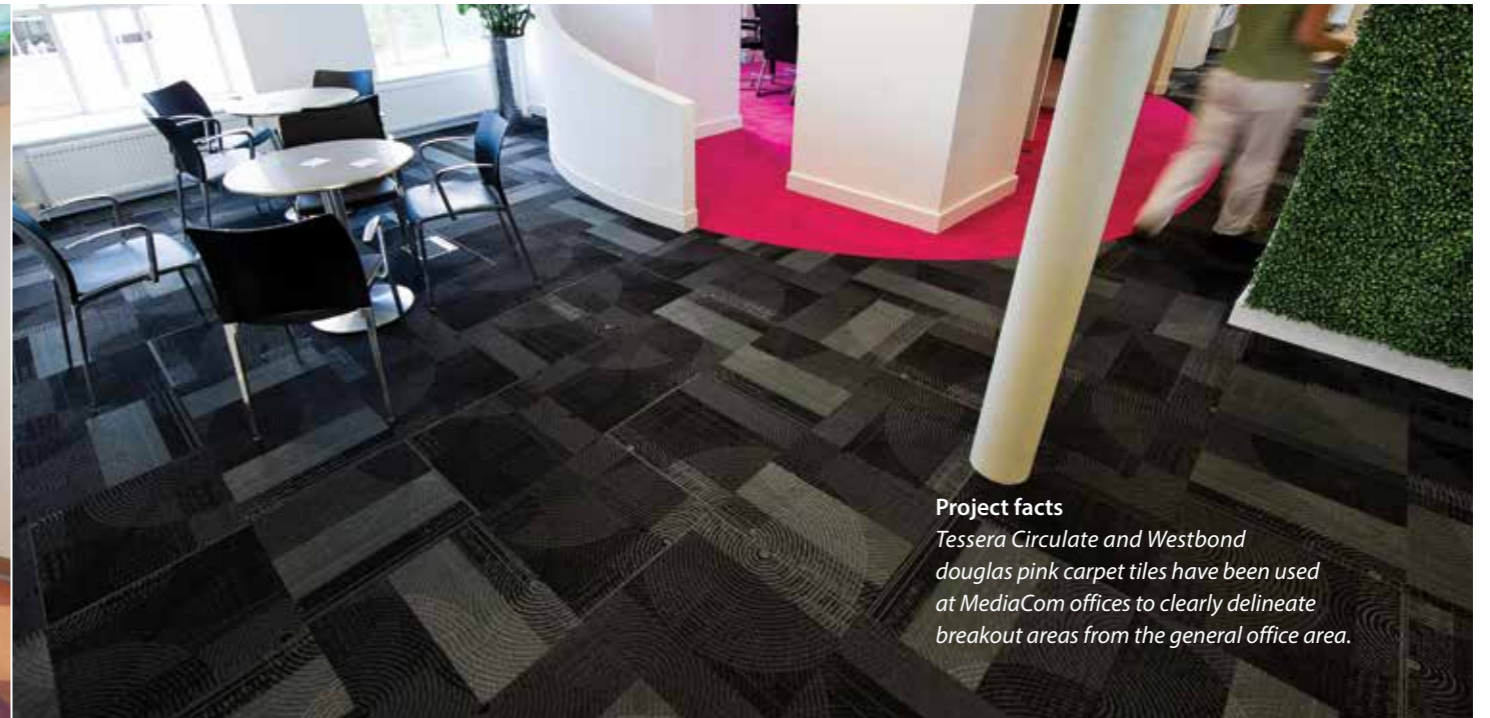
Design features – Simple combinations

To create an instant yet effective design, our tile and sheet products can be quickly combined or hand cut on site to give a creative feature to your floor.

Sheet and tile product from our Marmoleum collection can be used to great effect to create a subtle but striking finish. With an extensive palette of over 160 colours to choose from, the opportunities are huge.

Project facts

Six colours from the Marmoleum real and dual ranges have been used to bring a burst of colour to the Winthrop Paediatric Haematology and Oncology Hospital in Mineola, USA.

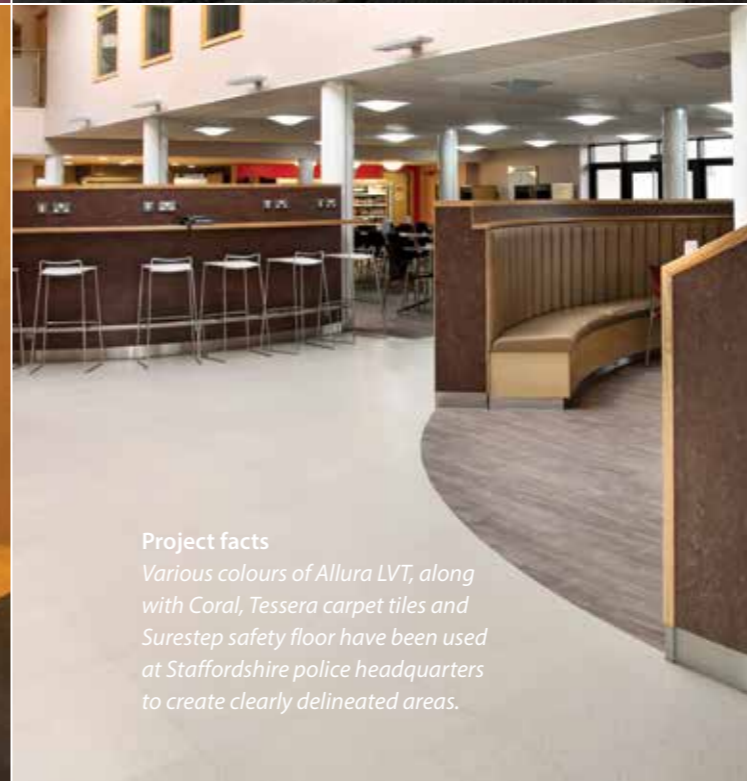


Project facts

Tessera Circulate and Westbond douglas pink carpet tiles have been used at MediaCom offices to clearly delineate breakout areas from the general office area.

Project facts

Le Fringe hairdressing salon features an exoskeleton ribbed effect of various shades of Marmoleum interspersed with glass which gives vantage to the continued colour panels across the floor and ceiling.



Project facts

Various colours of Allura LVT, along with Coral, Tessera carpet tiles and Surestep safety floor have been used at Staffordshire police headquarters to create clearly delineated areas.



Please note: Digital representations may vary from the actual product. Please order a sample to see the full effect. Contact 0800 731 2369.

Design features – Bespoke elements

To create a truly unique focal point, products from across our resilient and textile collections can be cut to create a flooring scheme that offers something out of the ordinary.

Carpet tiles:

Carpet tiles are often a popular choice of flooring for office areas, not only for their choice of colour and texture but also for their ability to offer the opportunity to create bespoke features as part of an overall design scheme.



Project facts

The patients and staff at Warrington Hospital have an exciting and welcoming new environment thanks to a warm and bright design created using Marmoleum.



Project facts

First Direct has created a bright, funky working environment using Tessera Alignment and Acrobat carpet tiles.



Project facts

Break time fun no matter what the weather! Make the floor an interactive feature using our unique Aquajet technology and Marmoleum.

Please note: Digital representations may vary from the actual product. Please order a sample to see the full effect. Contact 0800 731 2369.

Design features – it's in the detail

When you need more than a logo cutting but still want a very detailed floor pattern, Forbo's aquajet facility can help you create amazing detailed flooring.

Project facts

Contrasting colours of Marmoleum have been used to great effect in the Barolo restaurant in the Netherlands.



Project facts

The Leeds City Map is one of the largest, most complicated bespoke designs ever produced in Marmoleum. Using its Aquajet technology Forbo was able to create the map spanning 17.25 metres at its widest point and 15.24 metres in depth.



Project facts

Rijnstate have used aquajet cut Marmoleum to create a healing environment in their emergency care department.

Please note: Digital representations may vary from the actual product. Please order a sample to see the full effect. Contact 0800 731 2369.

Design features – Design elements

The most effective of impressions can often be made from the simplest of designs. Our Design Elements collection offers a range of “off the shelf” design solutions available in any colour combination, instantly bringing character and style to any interior.



Project facts

Created in close cooperation with the Italian architect Alessandro Mendini, the Mendini collection consists of six innovative floor designs, each available in multicoloured panels created with advanced aquajet technology.



Project facts

Obscure cut colours from across the Marmoleum collection were supplied in square panels to create a truly inspiring floor design at Bergen University.

For areas where a specialist product is required, our Aquajet technology can also be used with our safety and acoustic vinyl collections.



Step safety flooring

Available for all our resilient floor covering collections, our weld cable can be used to create contrast between sections of flooring, while our fluorescent weld adds an “after dark” option to your design.



Forbo's fluorescent weld cable

Please note: Digital representations may vary from the actual product. Please order a sample to see the full effect. Contact 0800 731 2369.

Design features – Designating walkways and areas

Modern life in open plan spaces can mean that the ability to clearly designate walkways and breakout areas can form an integral part of a floor plan.

Project facts

Flotex tiles were used at Kidscape in Croydon to create a vibrant children's play area. This installation was voted 'Contract Flooring Association's installation of the year.'



Flotex tiles

Our standard Flotex sheet and tile collections can also be used to great decorative effect.

Flotex artline is a collection of 22 block coloured strips of our unique flocked floor covering, available in 11cm and 22cm widths, which can be used in conjunction with any of our Flotex ranges to create an effective and attractive floor design.



Design work with Flotex artline



Marmoleum Real

Project facts

Marmoleum Real was used to delineate walkways and create a feature area in Aktif Group's head office in Istanbul.

Sarlon acoustic vinyl products can be mixed and matched to highlight walkways and areas.



Sarlon Code Zero and Uni

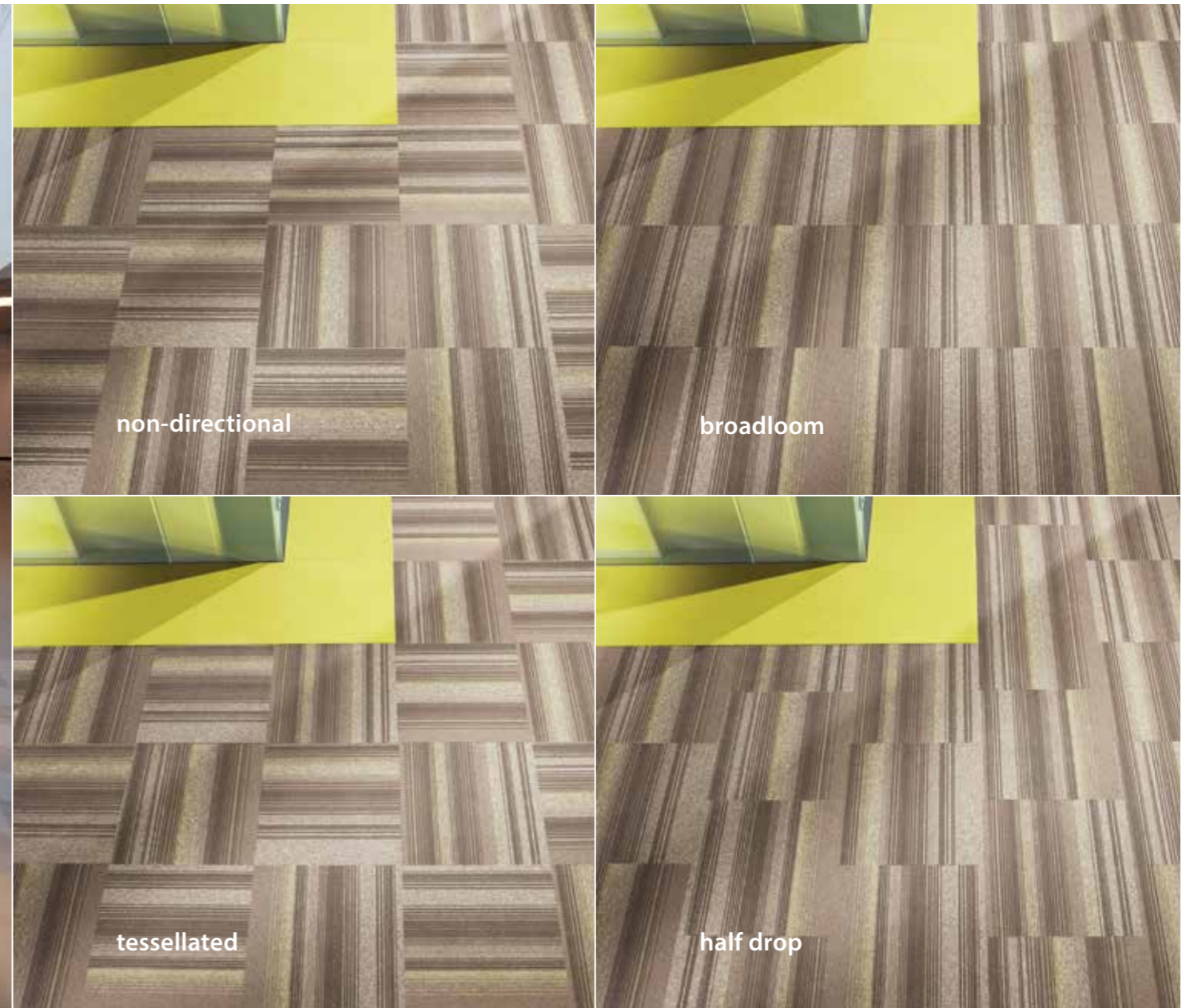
Please note: Digital representations may vary from the actual product. Please order a sample to see the full effect. Contact 0800 731 2369.

Design features – Modularity

Forbo's extensive range of modular products provides the ultimate flexibility in flooring design using standard products. With a modular offer including carpet tiles, Marmoleum tiles, LVT and vinyl tiles, the floor is yours.



Different aesthetic effects can be achieved depending on the direction of which modular products are installed. As an example the images below show the different aesthetic when Tessera Create Space 2 or Create Space 3 tiles are installed in a broadloom, tessellated, non directional or half drop.



Please note: Digital representations may vary from the actual product. Please order a sample to see the full effect. Contact 0800 731 2369.

Design features – Colour connections

Carpet tile collections, such as Tessera's Create Space collection, have intrinsic colour connections so meeting spaces, walkways and clearly defined breakout areas can all be incorporated into the flooring design by combining various elements of the Create space collection.



Create Space 3 agate, Westbond douglas pink, jet and vapour



Create Space 3 agate, Westbond dutch orange and dove



Create Space 2 licorice, Create Space 3 agate



Create Space 2 licorice, Create Space 3 agate

Shape connections

Our Allura LVT range also has elements that have been designed as collections linked by colours. The digitally printed Allura offers striking colour combinations while the Allura form collection offers LVT tiles in different shapes and sizes to allow specifiers to create a truly individual floor.



Allura abstract vinyl tiles



Allura form square



Allura abstract



Allura form triangle



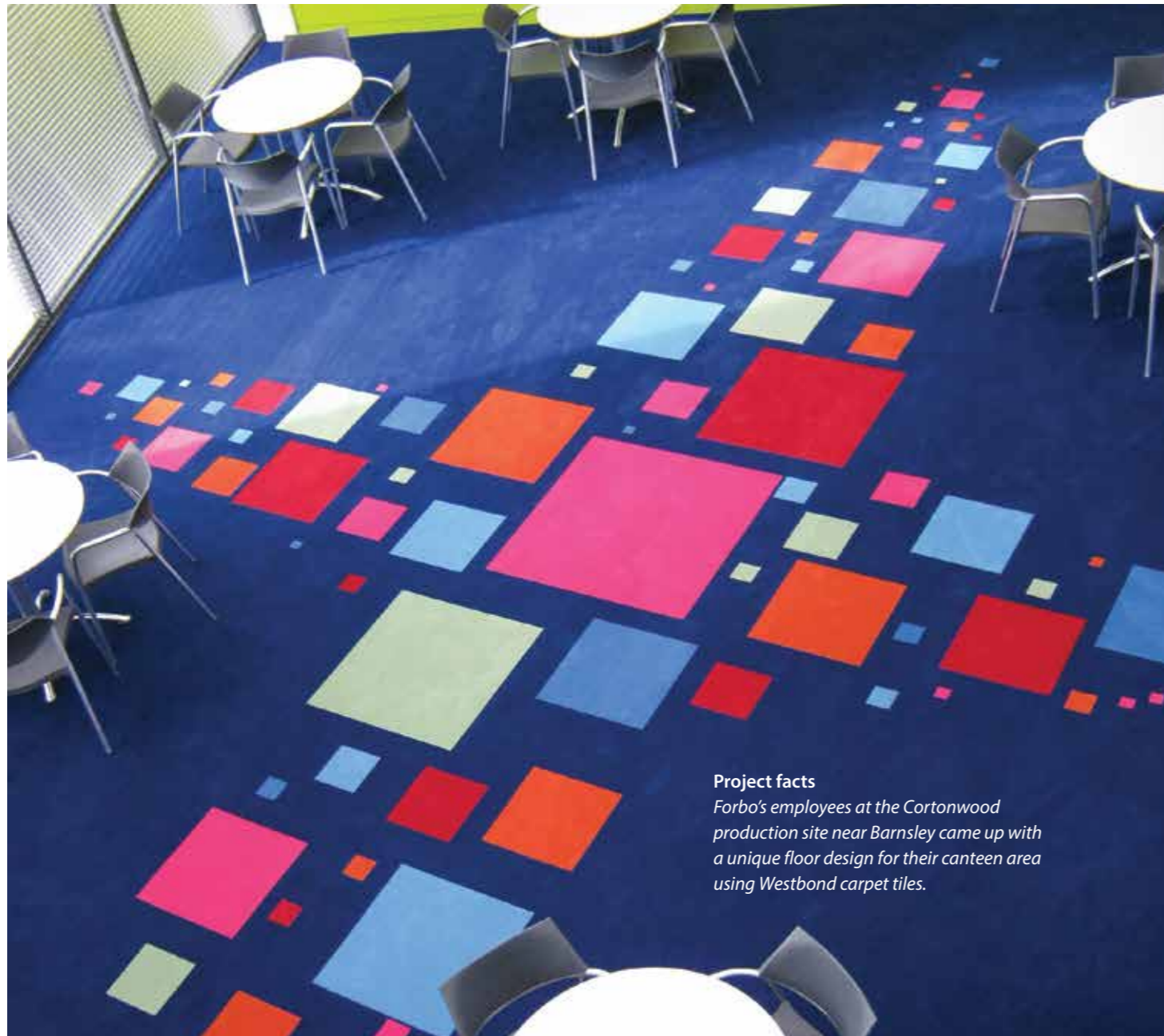
Allura form diamond

Please note: Digital representations may vary from the actual product. Please order a sample to see the full effect. Contact 0800 731 2369.

You're thinking individuality

The inclusion of a bespoke design allows customers to take control, creating unique interiors that reflect their identity.

Westbond allows customers to take control of the process of designing luxurious, bespoke, carpet tiles. We offer any colour, richly dyed to your unique vision, with no minimum order quantity.



Project facts

Forbo's employees at the Cortonwood production site near Barnsley came up with a unique floor design for their canteen area using Westbond carpet tiles.

Please note: Digital representations may vary from the actual product. Please order a sample to see the full effect. Contact 0800 731 2369.

we're thinking unique solutions

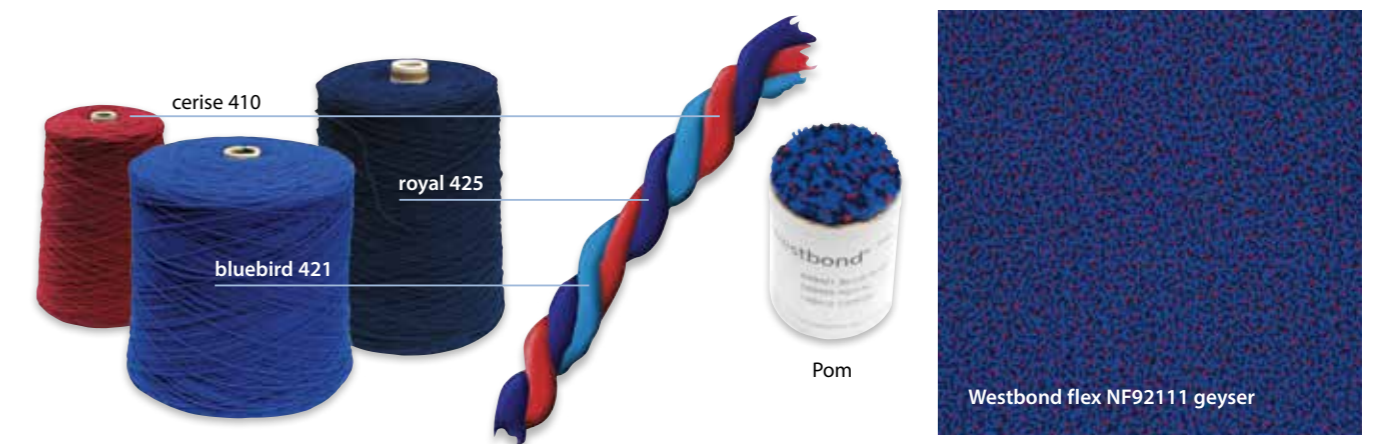
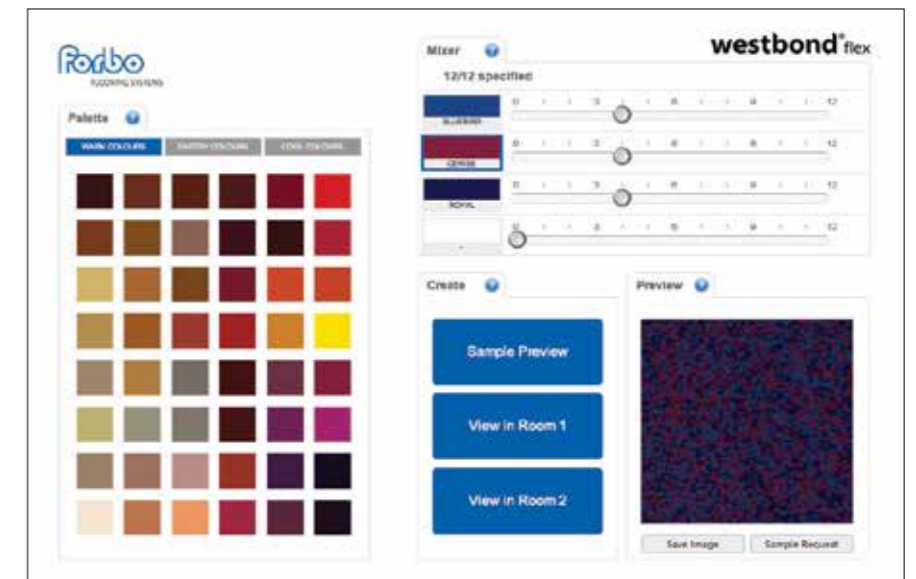
westbond™

When you need to match that perfect colour exactly, our team at Westbond can help you create a carpet tile that is uniquely yours, from 1m².

Alternatively, to create your own Westbond flex carpet tile design simply visit www.forbo-flooring.co.uk/flexcreator or speak to your local Forbo Business Area Manager.

Westbond Flex Creator:

Flex Creator puts the power to create your own carpet tile at your finger tips. Simply choose up to 4 colours from our Westbond palette and our design team can quickly turn your creativity into a sample within two working days.



Shown above are three plain yarns, which are combined together to create your chosen flex design. A 'pom' is then created to help you visualise your unique finished carpet tile.

Unique solutions – Digital print – Flotex

The technical process of digital printing gives you the power to recreate any image or design on our Flotex or vinyl products.

flotex® sottsass

A witty twist on the concept of Bacteria. This digital print is part of our Flotex Sottsass collection.

Project facts

3000m² of striking Flotex Sottsass in Bacteria was installed at the Arena concert hall in Montpellier, France.



Project facts

Flotex HD printed in a special clover design has been used at this college in The Netherlands to create a truly unique floor.

Project facts

Flotex digital printing was used to give a break-time game of snakes and ladders a whole new dimension at St Paul's Cathedral School.



Project facts

Flotex Sottsass Wool has been used to create a striking interior in this L'Oreal salon in Poland.

Please note: Digital representations may vary from the actual product. Please order a sample to see the full effect. Contact 0800 731 2369.

Unique solutions – Digital print – Vinyl

The technical process of digital printing gives you the power to recreate any image or design on our Flotex or vinyl products.

Project facts

Floorink brought the finishing touch to the Smack nightclub in Leamington Spa, creating a completely unique interior for party-goers to enjoy.



Project facts

Digitally printed Novilux is used to create a truly bespoke design in offices in Holland.



Millennium Bridge, London
temporary advertising using Floorink



floorink

Forbo have invested in the latest digital printing capabilities to create seamless high quality (600dpi) designs and flooring solutions. In order to make the most of this technology we have a partnership with Printed Space to create Floorink, a revolutionary product guaranteed for 10 years. As well as bespoke designs we also have access to image banks from A-Z and Cassini Maps, Blue Sky aerial Photography, Getty images, Gaby Gaby and George Steinmetz to name but a few.

Clapham School:

Pupils at Clapham Manor Primary School have the whole of London at their feet with the installation of an impressive A-Z street map floor created by Printed Space in partnership with Forbo Flooring Systems.

Please note: Digital representations may vary from the actual product. Please order a sample to see the full effect. Contact 0800 731 2369.

You're thinking design floors

Large scale interior schemes often require a number of flooring products with different performance requirements to work together to create an overall flow of design.

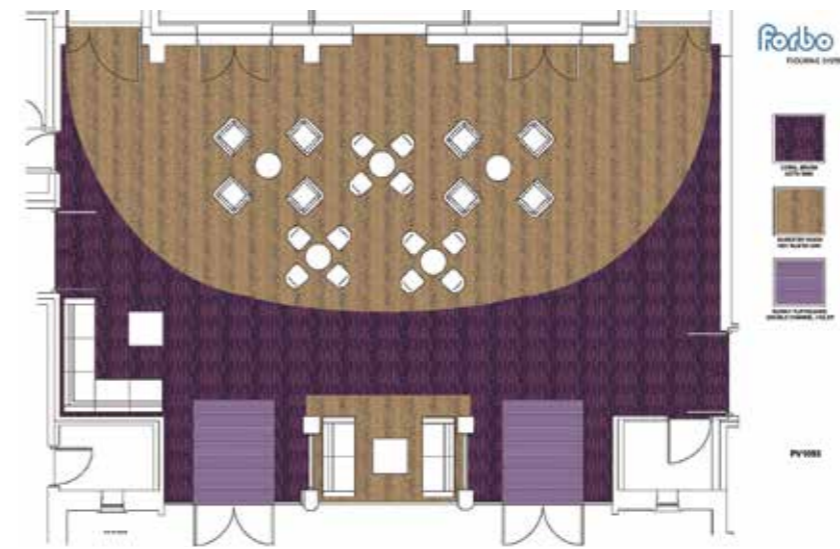


Plan design:

The in-house design team at Forbo can help bring your ideas to life as part of our Plan Design Service. Whether you are taking inspiration from one particular product which needs to be carried through the plan, or whether you simply need to see your scheme in the flesh, we can create plan boards of your design complete with product samples.

For areas that have specific requirements such as safety flooring or acoustic flooring, our team can offer help and advice on the best products to meet your needs, all designed to work with your visualisation.

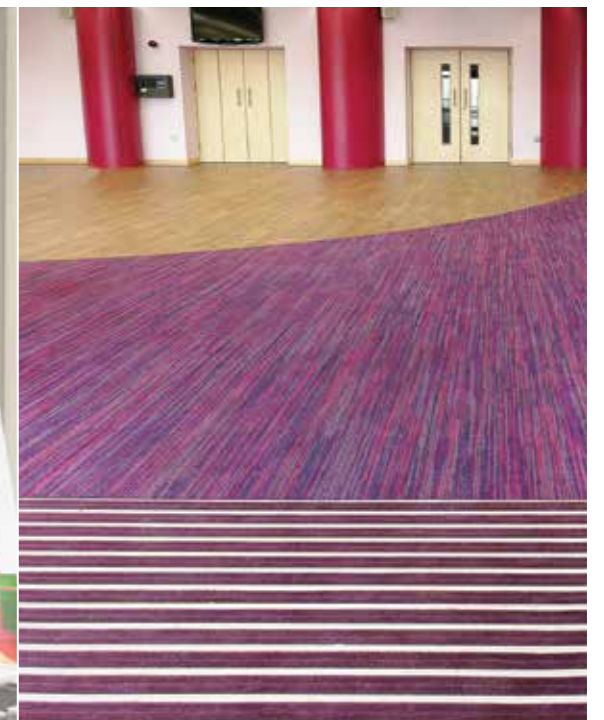
We're thinking let us do the work



Project facts

Our plan design service has brought to life a striking new refurbishment project at Loughborough University where a wide range of Forbo's textile and resilient products have been specified as part of an exciting integrated flooring solution.

Call 01772 332 620 to find out more.



Please note: Digital representations may vary from the actual product. Please order a sample to see the full effect. Contact 0800 731 2369.

Residential options

Forbo offers a range of design options for residential interiors, that can be used to create a home that reflects your personality. The only limit is your imagination!

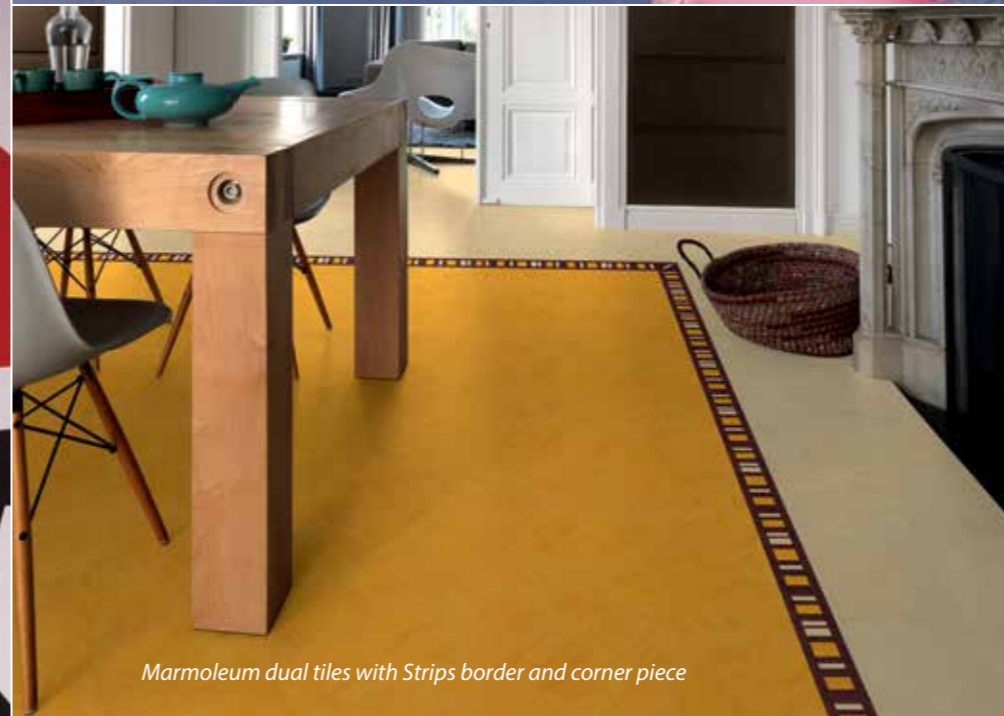


Floorink:
Forbo's latest innovation, in partnership with Printed Space, is Floorink. This pioneering new product is a revolutionary way to design a truly bespoke space in the home, brought to life with digitally reproduced images. Browse from 1000's of carefully selected images or create your own design from scratch to produce something completely individual.



For that personal touch, the Superstar panel adds an individual element to any child's room.

Marmoleum dual tiles with Superstar feature panel



Marmoleum dual tiles with Strips border and corner piece

marmoleum®

Everyone is an individual. Our residential Marmoleum collection includes a range of design elements available to order in any combination of colours from our Real range. From borders and lacing strips to clip corner tiles and key squares, any of our design elements can be co-ordinated to match your interior colour scheme.

Please note: Digital representations may vary from the actual product. Please order a sample to see the full effect. Contact 0800 731 2369.

Forbo's Room Planner

...Wouldn't it be amazing if you could visualise how your chosen floor coverings might look on the floor.

Well, thanks to Forbo's innovative new on-line design tool, Room Planner, you can drop products from our entire portfolio into a selection of room shots. For more information, please visit www.forbo-flooring.co.uk/roomplanner

Choose the setting:

You start by looking through the many different images in the Gallery – helpfully split into various market sectors – retail, healthcare, education, etc – choosing a setting that best represents the installation site.



Choose the product...

Then, with just a couple of keystrokes, you can pick and choose the exact range and colourway of floor covering to 'install', experimenting with as many different options as you like.



Choose the layout...

You can even specify how the product is to be laid, a very useful feature, especially where our modular products are concerned.



Useful features:

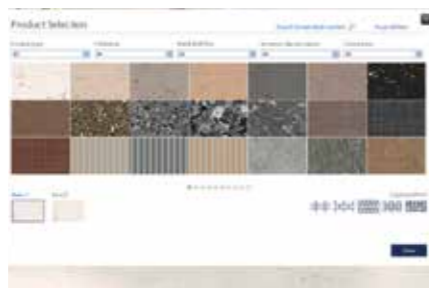


Dedicated 'Entrances' section –

This new section is specifically designed to offer settings where our Coral entrance flooring products can be viewed.

New easy to use product selector –

You can now search for the ideal product using various different criteria or by item number.



Facility to combine products –

In some of room images in the gallery you can combine two or three different floor finishes. (Look for images with two paintbrush icons on the floor).

CAD downloads – It is now possible to download a CAD file of the colour that you are viewing in the floor planner.



Click through – To help confirm a product choice, the "more information" link takes you straight to the relevant product page on the website.

The next step

This brochure has been designed to give you a brief overview of the extensive range of design related flooring options supplied by Forbo Flooring Systems. More detailed literature is available on all the product ranges shown.

We're committed to providing the very highest standards of customer service and we look forward to being of further assistance to you. Our friendly team of advisors and sales managers can give you all the advice and technical assistance you might need to specify the most appropriate combination of Forbo products for your next flooring project.



Please contact
info.flooring.uk@forbo.com
www.forbo-flooring.co.uk
Tel: 0800 731 2369

Downloads and samples from www.forbo-flooring.co.uk

All the information you need, available at the click of a button, any time of the night or day, seven days a week, 365 days a year.

The downloads and samples section allows you to access the broad variety of literature we have available such as product speci-

fications, NBS Specifications, BRE ratings, Material Safety Datasheets, brochures and Cleaning & Installation information. Please visit www.forbo-flooring.co.uk/downloads

Samples can also be ordered via the web using the online sample basket or by calling **0800 731 2369**.

London EC1 showroom

Forbo's EC1 showroom is the ideal place to visit when you're looking for that 'perfect colour' or just want to see a wider range of products.

Our full portfolio of brands is on display including Tessera and Westbond carpet tiles, Marmoleum, project vinyl ranges, entrance systems and designs from our Flotex collection.

Why not pop in and enjoy some hospitality while looking at the products or discussing a project with one of our advisors.

We look forward to seeing you.

Visit our showroom:
London EC1 Showroom
79 St John Street
Clerkenwell
London
EC1M 4NR
Tel: 0207 553 9300

Opening hours:
Monday - Friday 9.00 am - 4.00 pm



The information in this brochure is correct at the time of going to press. Forbo Flooring UK Limited reserves the right to make changes to the specification and colour of its products from time to time and goods supplied may not conform exactly to those shown in this brochure. Collection updates and content may be updated quarterly.

Please note: Digital representations may vary from the actual product. Please order a sample to see the full effect. Contact 0800 731 2369.

Forbo Flooring Systems is part of the Forbo Group, a global leader in flooring, bonding and movement systems, and offers a full range of flooring products for both commercial and residential markets. High quality linoleum, vinyl, textile, flocked and entrance flooring products combine functionality, colour and design, offering total flooring solutions for any environment.



UK

Forbo Flooring UK Limited
PO Box 1, Kirkcaldy, Fife KY1 2SB

London EC1 showroom

79 St John Street, Clerkenwell
London EC1M 4NR
Tel: 0207 553 9300

For commercial enquiries:

If calling from the North,
Midlands, London & South East
Tel: 0800 0282 162
Fax: 01772 646 912

If calling from Scotland & South West

Tel: 0800 0935 258
Fax: 01592 643 999

Nuway enquiries:

Tel: 01773 740 688
Fax: 01773 740 640

Residential enquiries:

Tel: 0800 0935 846
Fax: 01592 643 999

Email: info.flooring.uk@forbo.com
www.forbo-flooring.co.uk

Samples:

Tel: 0800 731 2369

Ireland

Forbo Ireland Ltd
2 Deansgrange Business Park
Blackrock
Co Dublin

Tel: 00353 1 2898 898

Fax: 00353 1 2898 177

Email: info.ireland@forbo.com

www.forbo-flooring.ie

Registered office:

Forbo Flooring UK Limited
Den Road, Kirkcaldy
Fife KY1 2ER

Registered in Scotland: No 41400



forbo

FLOORING SYSTEMS