



BY APPOINTMENT TO H.M. THE QUEEN
MANUFACTURERS OF FLOORCOVERING
FORBO FLOORING UK LTD. KIRKCALDY

CI/SfB

| (43) | Tn |

September 2018



WORKING TOGETHER TO CREATE BETTER ENVIRONMENTS

PROCURE 22

creating better environments

forbo

FLOORING SYSTEMS

CONTENTS

THE RIGHT SOLUTIONS... FOR THE RIGHT REASONS

4
THE FORBO GROUP
Forbo Flooring offers floor covering solutions for the healthcare market covering all project needs from entrance to exit.



PROJECT VINYL

- 8 **SPHERA**
- 10 **STEP**
- 12 **ETERNAL**
- 14 **SARLON**
- 16 **ALLURA**
- 20 **COLOREX**



CARPET TILES

19
TESSERA & WESTBOND
Tessera & Westbond offer stylish and sustainable carpet tiles in various constructions delivering specific performance and aesthetic benefits.



CREATING BETTER ENVIRONMENTS

22
CBE
From how they're made to how they perform, we make outstanding floors that are truly sustainable.



COLLECTION AND RECYCLING SERVICE

27
BACK TO THE FLOOR
Back to the Floor is a free scheme which collects installation off-cuts of Forbo's products including Flotex, Eternal vinyl, Allura LVT, Tessera carpet tile and Marmoleum products.



RESILIENT FLOORING

6
MARMOLEUM
Forbo's linoleum brand – natural, sustainable, durable, high quality and innovative in colour and design.



FLOCKED FLOORING

18
FLOTEX
A floor covering that looks and feels like a carpet without any of the drawbacks of a textile floor covering.



ENTRANCE FLOORING SYSTEMS

21
CORAL & NUWAY
A collection of textile clean-off products and rigid entrance systems for entrances with heavy traffic or intense traffic.



DSDC ACCREDITED FLOORING

26
DSDC
DSDC is an international centre of knowledge and expertise dedicated to improving the lives of people with dementia.



WHAT TO USE WHERE

28
PRODUCT TABLES
Types of hard and soft flooring ranges and suitability.



REASONS TO CHOOSE PROCURE 22
CONSTRUCTION PROCUREMENT FRAMEWORK



Introduction

Welcome to Forbo Flooring Systems' guide to Procure 22 and our approved floor coverings. Fit for purpose in the Healthcare environment and designed to deliver best value for money, we cover all your flooring needs from entrance to exit. Not sure if Procure 22 is for you? Please read on to discover the benefits of utilising this Framework agreement and what Forbo as an approved supplier on it can offer you.

Overview

ProCure22 (P22) is a Construction Procurement Framework administrated by the Department of Health (DH) for the development and delivery of NHS and Social Care capital schemes in England.

It is consistent with the requirements of Government Policy including the Productivity and Efficiency agenda; the Government Construction Strategy; the Public Contracts Regulations 2015; the National Audit Office guidance on use of centralised frameworks; and the Cabinet Office Common Minimum Standards for procurement of the Built Environment in the Public Sector.

Why use the Procure 22

The P22 process builds on the benefits and success of previous frameworks (P20/P21/P21+) while satisfying the core objective of delivering improved value for money in Health and social care capital developments. It reduces your exposure to risk and each scheme will have a start-up workshop provided by the appointed Principal supply chain Partner (PscP). There are six PscP on the Framework (bam, iHP, gallifortry|HPs, graham, kier and interserve) to work with without having to undertake an oJeu procurement process.

Benefits of working with Forbo under ProCure 22 Framework

- Open and honest recommendations for the best floor covering, or combination of products, to meet your requirements
- Savings through transparent trading and aggregation of demand
- We are recognised as a trusted partner and can supply total solutions for every area in every type of healthcare building
- The personal touch with your own area manager to assist in any specifications or advice

Flooring products available from Forbo via Procure 22 Framework

- | | | |
|---------------------|---------------------------|----------------------|
| • Entrance Systems | • Static control flooring | • Luxury Vinyl Tiles |
| • Linoleum | • General purpose vinyl | • Carpet Tiles |
| • Safety flooring | • Homogeneous vinyl | • Flocked flooring |
| • Acoustic flooring | • Safety vinyl | |

What to do next

For further information on any of the products in this brochure, please don't hesitate to contact us on the number below and we'll be pleased to send you additional literature and samples as required.

Samples:
0800 731 2369 or online at
www.forbo-flooring.co.uk
samples.uk@forbo.com

Email:
info.flooring.uk@forbo.com

Downloads & CPDs:
www.forbo-flooring.co.uk/downloads
www.forbo-flooring.co.uk/CPD

Procure 22
www.forbo-flooring.co.uk/healthcare

THE RIGHT SOLUTIONS...



Forbo Flooring Systems, as part of the Forbo Group, is a leading global player in high-quality, commercial floor coverings including Entrance systems, Linoleum, Vinyl, Luxury Vinyl Tiles, Carpet tiles and Flocked Flooring. With 15 manufacturing sites in 6 countries, including 5 factories manufacturing here in the UK, and with sales organisations in 25 countries.

Forbo offer a 10 year warranty with discounts of up to 47% and pricing fixed for 12 months, ensuring you have a product fit for purpose and fit for the future so offering the savings without any compromise. We are a complete one stop shop for all your flooring needs.

With millions of square metres of our floor coverings installed in healthcare establishments across the world, Forbo is at the forefront when it comes to understanding the needs and concerns of the healthcare marketplace. We have a fully integrated portfolio which covers all project needs from entrance to exit from one trusted supplier.

We can help create stylish and functional flooring designs while still meeting the various floor covering requirements outlined in Health Building Note 00-10, Part A: Flooring. From sheet systems for clinical areas, static control flooring for X ray rooms, slip resistant flooring in wet clinical areas, carpet tiles in offices and entrance products which prevent pollutants entering your facilities, Forbo has a cost effective floor covering solution which would add value.

Don't just take our word for it. Inside this brochure you will see examples of how our product has been used in healthcare facilities across the UK.



FOR THE RIGHT REASONS...



Designing for Dementia environments

Age-related changes and impairments can make it more difficult to understand and navigate the built environment. Impairments may include sensory, mobility or cognitive (or sometimes a combination of them all) which can affect people's functioning, behaviour, independence and ultimately, their quality of life.

Forbo has partnered with **Dementia Services Development Centre (DSDC)**, an international centre which draws on 25 years of global research and practice, to identify which products in our portfolio can contribute to improving the quality of life for people with dementia.

www.forbo-flooring.co.uk/designingfordementia



HAI infections

When it comes to infection control and stopping Hospital Acquired Infections (HAIs), what better place to start than from the flooring up? Our Marmoleum and Flotex products are proven to inhibit the growth and spread of infections such as MRSA, Norovirus and C Difficile, helping to contribute to a healthier and more hygienic environment in any area of a hospital.

www.forbo-flooring.co.uk/healthcare

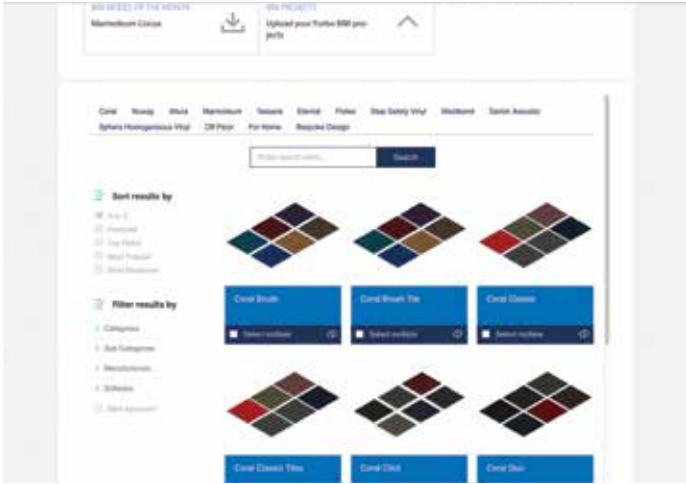


BIM Models

Forbo offers a range of free BIM object for a wide selection of products from across our portfolio. These can be downloaded directly from www.forbo-flooring.co.uk/BIM or by visiting **BIMSTORE** or **NATIONAL BIM LIBRARY**.

Our handy online video guide also offers step by step instructions on how to use our objects in your projects to create beautiful flooring installations.

Simply visit our website www.forbo-flooring.co.uk/BIM



FIGHTING INFECTION FROM THE FLOOR UP



Marmoleum



With millions of square metres of our floor coverings installed in healthcare establishments around the world every year, Forbo is at the forefront when it comes to understanding the needs and concerns of the health sector in regards to flooring.

We understand that stopping **Hospital Acquired Infections** (HAIs) is one of the most talked about subjects when it comes to looking at best practice and there is a continuous pressure on the NHS to continue to improve their HAI standards.

Marmoleum is ideal for all areas in a hospital where durability and hygiene is required. Thanks to its main natural raw material, linseed oil, Marmoleum is also naturally bacteriostatic. **Marmoleum** product is *independently proven* to inhibit the growth and spread of infections such as **MRSA, Norovirus, Acinetobacter baumannii** and **C Difficile** helping to contribute to a healthier and more hygienic environment in any area of a hospital.

marmoleum®

Marmoleum is ideal for all areas of a healthcare estate where 'Sheet systems' is specified in Health Building note 00-10 Part 1: Flooring

- Marmoleum's unique Topshield2 finish reduces soiling and is resistant to staining from hand disinfectants
- Marmoleum is the **ONLY** resilient floor covering to be approved by Allergy UK as thanks to its smooth surface, it does not harbour house dust mites
- Marmoleum has been awarded 12 independent Ecolabels – more than any other floor covering in the world
- Marmoleum is BREEAM A+ rated in the healthcare sector



NHS FIFE – VICTORIA HOSPITAL



NHS Fife

Forbo Flooring Systems was the supplier of choice for the large and prestigious new build: NHS Fife at the Victoria Hospital in Kirkcaldy.

As the main hub of the hospital, the new extension is frequented by members of the public as well as patients being treated within the facility, and so stopping the possible spread of infection from public to treatment areas was a key factor in the design of the hospital. Specified in all of the corridors, as well as the wards, theatres and general clinical areas, Forbo's Marmoleum is independently proven to give protection against the bacteria MRSA and E. coli.

PROJECT:
**Victoria
Hospital**

LOCATION:
Kirkcaldy, Fife

INTERIOR DESIGN: **BDP, Glasgow**
BUILDING CONTRACTOR:
Balfour Beatty

FLOORING MATERIAL:
Marmoleum Marbled **3136** | concrete
+ **3221** | hyacinth + **3137** | slate grey
+ **3224** | chartreuse + **3225** |
dandelion + **3030** | blue + **2621** |
dove grey + **3219** | spa + **3126** | kyoto
+ Surestep Original **171732** | storm

Dominic Gallagher, Project Director at Consort Healthcare, on behalf of Victoria Hospital comments:

"The aim was to create a high quality, hygienic and modern environment for all users of the hospital and we are all very pleased with the outcome."



SPHERA – A NEW ERA IN HOMOGENEOUS VINYL



Sphera

The Forbo Sphera collection is setting new standards in homogeneous vinyl due to its design, technology and performance.

Forbo's brand new purpose-built manufacturing plant means that all the latest insights and technology have been used to create 'smart' and innovative solutions resulting in a premium collection.

Sphera is ideal for all areas of a healthcare estate where 'Sheet systems' is specified in Health Building note 00-10 Part A: Flooring.



sphera®

- SMART-top PUR surface finish ensures Sphera has a high resistance to chemicals, scratches and stains
- Inline coating and subsequent embossing delivers superior appearance and durability
- Achieves highest abrasion wear rating group T tested to EN660-2
- State of the art steel-belt press and thermofix technology ensures consistent quality
- Green energy and zero waste technology ensures efficient and sustainable manufacturing
- Low emissions and phthalate free manufacturing
- Sphera is BREEAM A+ rated in the healthcare sector



GLAN CLWYD – MOTHER & BABY UNIT

Calming colours and patterns have helped to create a special environment for mothers and babies at Glan Clwyd Hospital.

Forbo Flooring Systems' new Sphera Element has been specified throughout the Mother and Baby Unit, due to its bright and fresh appearance, high-performance and durability. Easy to work with, the Sphera sheets were laid throughout the unit and hand cut to shape to create beautiful butterfly designs.



Glan Clwyd Hospital



PROJECT: Glan Clwyd Hospital	INTERIOR DESIGN: IBI Group
LOCATION: Bodelwyddan	FLOORING CONTRACTOR: Active Flooring
	FLOORING MATERIAL: Sphera Element 50018 mortar + 50049 yellow green + 50054 amber + 50046 teal + Eternal Wood 11962 limed oak



SPECIALIST AREAS – SAFETY FLOORING



Step floor covering and Onyx+ wall covering

The Step collection of safety flooring offers varying levels of slip resistance from R10 – R12 and all comply with >36 wet pendulum values as per HSE guidelines and have a lifetime slip resistance guarantee.

With over 60 designs to choose from including wood effects and wetroom flooring which is suitable for barefoot use and available in 2 or 4m wide (product dependant) to avoid seams and have single seamless installations within en-suite rooms.



step®

- The step collection offers varying levels of slip resistance from R10 – R12 and barefoot safety and is HSE compliant
- The PUR pearl finish means it is resistant to scuff marks and improves the ease of cleaning and maintenance
- High durability due to the inclusion of quartz and carborundum in the wear layer
- Step is BREEAM A+ rated in the healthcare sector



wetroom solution

- Onyx wall vinyl is suitable for shower rooms and bathrooms. This system provides no breeding ground for bugs and bacteria such as MRSA, overcoming infection control concerns that may be associated with traditional tile and grout

BEACONSFIELD EAST DEMENTIA WARD AT HILLINGDON HOSPITAL

In need of a floor covering that had a homely, non-clinical feel combined with effective slip resistance, GBS Architects installed 590m² of Forbo Flooring Systems' Surestep Wood Decibel in a rehabilitation ward for older adults, as part of the Beaconsfield East Dementia Care Project.

Using a grant received from the Department of Health Capital Investment initiative, the Hillingdon Hospitals NHS Foundation Trust refurbished the Beaconsfield East Ward, which won the Best Internal Environment Award at the Building Better Healthcare Awards 2014.



Beaconsfield East dementia ward at Hillingdon Hospital

PROJECT:
**Beaconsfield East
Dementia Ward at
Hillingdon Hospital**

LOCATION:
London

ARCHITECT: **GBS Architects**

FLOORING MATERIAL:
Surestep Wood Decibel **718922** |
natural oak



ETERNAL – GENERAL PURPOSE VINYL



Eternal

Eternal meets the three key essential requirements for healthcare flooring; resistant to chemicals, durable and very easy to clean. Eternal can create a less institutional interior with the highly natural look of the product.

The new Eternal de Luxe

The Eternal de Luxe range is a great example of Forbo's unique, premium design capabilities. This new range features wood and stone effect, enhanced by authentic embossing structures that add even more realism to the designs. Eternal de Luxe is available in an original compact version (2mm) as well as 17dB acoustic version (3mm) in either 2 or 4m width (less welded seams).



eternal

- Suitable for general application areas
- Authentic visual & digital print options available
- High tech PVC wear layer for performance
- Unique PUR Pearl finish to maintain looks
- Performs under intensive use
- Eternal is BREEAM A+ rated in the healthcare sector

PUR
Pearl™

PUR
Wood Pearl™



CHORLEY HOSPITAL – THE URGENT CARE CENTRE



Chorley Hospital – The Urgent Care Centre

David and Kate Simmons, Interior Designer at The Frank Whittle Partnership, created an impressive design for The Urgent Care Centre at Chorley Hospital using several products from Forbo's integrated portfolio.

PROJECT:
**The Urgent
Care Centre**
LOCATION:
Chorley, UK

ARCHITECT:
The Frank Whittle Partnership

FLOORING MATERIAL:
Colorex Basic Plus **0000** | quartz + Surestep Original **171842** | pistachio + Eternal Colour **43982** | petrol sparkle + **43742** | honey sparkle + **73722** | bubblegum sparkle + **43602** | plum sparkle + Eternal Material **12012** | quartz stone + **11392** | silver stripe + Eternal Digital Print + Surestep Laguna **181052** | slateblue + Coral Duo **9730** | black diamond



SARLON – ACOUSTIC VINYL



Turn down the volume

As wards and corridors of hospitals can be noisy places achieving lower noise pollution is essential in reducing the stress and promoting the well being and comfort of patients and staff.

Our Sarlon acoustic vinyl absorbs impact sound therefore creating a calmer environment for patients.



sarlon®

- Optimum balance between performance and impact sound reduction
- Available in 15 or 19 db
- Available in matching compact vinyls (range dependant)
- Phthalate free and REACH compliant
- Sarlon is BREEAM A+ rated in the healthcare sector



ROYAL ABERDEEN – CHILDREN’S HOSPITAL

Our floor coverings in use

After extensive colour research, Tinto Architecture specified Forbo Flooring Systems’ acoustic floor covering, Sarlon, in an array of striking colours, in order to create an interior that had a profoundly positive effect on both patients and staff at The Royal Aberdeen Children’s Hospital.

The array of calming and mood-boosting colours from the Sarlon collection is also combined with the benefits of 15dB impact sound reduction and easy maintenance.



Royal Aberdeen Children's Hospital



PROJECT:
Royal Aberdeen
Children’s
Hospital

LOCATION:
Aberdeen

ARCHITECT: Tinto Architecture

FLOORING MATERIAL:
Sarlon Uni 420808 | lime +
420818 | avocado + 420817 |
blue + Eternal Wood 12802 |
elegant oak



ALLURA – LUXURY & LOOSE LAY VINYL TILE



A relaxed, welcoming atmosphere is required for the family rooms and waiting areas in hospitals however the flooring must still be able to withstand high footfall as well as people eating and drinking in these areas.

Forbo's Allura collection offers you the aesthetics of realistic, natural wood and stone floors whilst giving you the advantage of strong and durable vinyl: warm underfoot, sound absorbing, tough and durable, with easy installation and maintenance.

Practical and easy to clean Allura offers high quality aesthetics with low maintenance costs. Available in multiple tile and plank formats, Allura Flex is the loose lay version designed to be installed with just tackifier and work alongside Forbo's Tessera carpet tiles without the need for a transition strip.

allura

- Wide choice of superior designs
- Embossing and bevelling for added realism
- Exceptional dimensional stability
- Proven wear layer
- Phthalate free and REACH compliant
- Allura is BREEAM A+ rated in the healthcare sector



THE LONDON CLINIC

The ability to source all floor coverings from one manufacturer was the key reason the London Clinic specified a range of products from Forbo Flooring Systems.

They chose Allura Wood for their reception and general circulation areas in addition to Surestep safety vinyl and Marmoleum Ohmex for specialist areas.



PROJECT:
The London Clinic

LOCATION:
London

ARCHITECT: **Swanke Hayden Connell Architects**
FLOORING CONTRACTOR: **Crown Flooring Ltd, London**

FLOORING MATERIAL:
Allura Wood **w60150** | brown raw timber + Marmoleum Ohmex **73032** | mist grey + Surestep Wood **18242** | sunny beech



NON-CLINICAL AREAS – TEXTILE FLOORING FLOTEX FLOCKED FLOORING



Flotex

For hospitals to run efficiently, there is a team of staff which usually operate from offices within the hospital. The Health Building note 00-10 Part A flooring recommends textile or sheet products for these areas.

Textile products offer excellent acoustic properties and when modular formats are used they can quickly adapt to layout changes.



flotex®

- 70 million Nylon 6.6 fibres per m² deliver a durable and slip resistant surface.
- Cushioned backing provides comfort and acoustic performance (20dB)
- Flotex is the ONLY textile floor covering to be approved by Allergy UK
- Flotex is BREEAM A/A+ rated in the healthcare sector
- Steam cleaning and mechanical cleaning can be used, enabling the floor to be restored quickly even after heavy soiling



NON-CLINICAL AREAS – TEXTILE FLOORING TESSERA & WESTBOND CARPET TILES



Tessera



Westbond

tessera®

- A wide range of multi-construction carpet tiles
- Various formats available including planks and XL tiles enabling creative floor design
- Impact noise reduction up to 29dB
- Random lay ranges available, reducing installation waste to 2%
- Many ranges BREEAM A rated in the healthcare sector

westbond®

- Fusion bonded for a dense and luxurious product
- Excellent broadloom appearance
- Impact noise reduction up to 27dB
- Any colour available from 1m²

SPECIALIST AREAS – STATIC CONTROL FLOORING



In sensitive hospital areas such as operating theatres, intensive care units and imaging diagnostic facilities, flooring presents its own unique challenges.

Not only must it comply with **stringent hygiene** regulations to help prevent **hospital-acquired infections**, it must also demonstrate that it meets any **necessary safety requirements**. And most importantly, it must prevent any **electrostatic discharges** as these can cause malfunctions, or even failures, in **highly sensitive medical equipment** and devices.

Our Colorex range of conductive floor coverings has a **pore free surface**, ensuring the highest hygiene properties whilst complying with all ESD and clean room standards.



colorex®

- Pore-free surface is resistant to bacteria and moulds
- Prevents electrostatic discharges that can cause malfunctions in highly sensitive medical equipment
- Colorex is highly stain resistant helping to ensure your investment will still look good in years to come
- Won't be tarnished by the regular cleaning and disinfecting cycles that are imperative in hospital environments

Following a comprehensive programme of testing, its suitability in cleanroom applications has been certified by the renowned Fraunhofer IPA Institute in Germany.



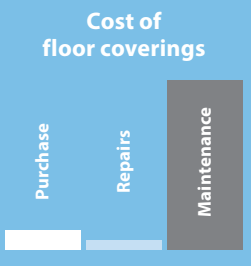
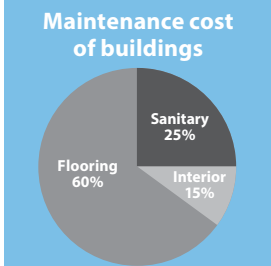
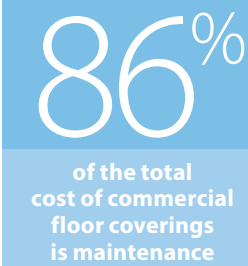
SPECIALIST AREAS – ENTRANCES



Entrance Flooring Systems from Forbo reduce the risk of slips and trips, they reduce maintenance time and save money.

Round the clock staff shifts and the constant flow of visitors mean entrance areas can take quite a pounding, and wet and dirty soiling can be trailed into the reception area and beyond. Not only can this damage interior floor coverings, it also creates unnecessary health and safety hazards.

Our fully integrated collection of Entrance Flooring Systems provide an outstanding first line of defence against soil and moisture entering a building to keep cleaning and maintenance costs down while reducing the risk of slips and trips.



coral®

Textile clean-off entrance systems

Our Coral textile clean off systems offer a variety of constructions to suit all applications, budgets and aesthetic requirements.

- 6 metres of Coral can stop up to 95% of dirt and moisture entering a building
- Research proves Coral can cut cleaning costs by 65%
- As a consequence Coral pays for itself in 6 months!
- Available in sheet, tiles and click systems

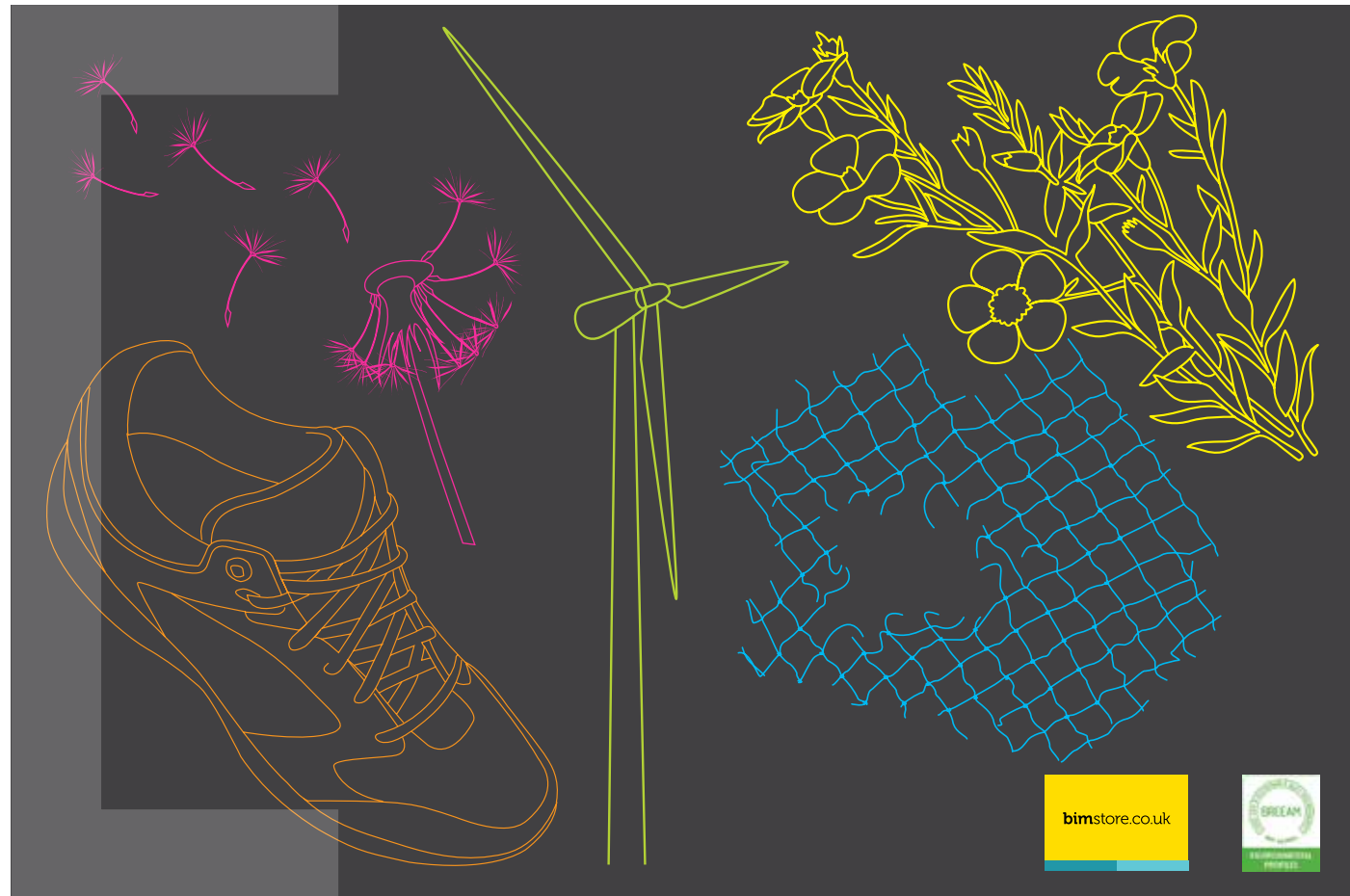
nuway®

Rigid entrance systems

Our Nuway collection of rigid entrance systems are designed for entrances in areas where high levels of pedestrian and wheeled traffic are experienced.

- Tuftiguard ranges are reversible – electively doubling the lifespan
- FR version for more fire sensitive locations
- HD (heavy duty) version suitable for high point loading and wheeled traffic

CREATING BETTER ENVIRONMENTS



From how they're made to how they perform, we make outstanding floors that are truly sustainable. That's because our floors are good for people, good for buildings and good for the environment. So, from the building they're in to the world outside, we're helping our customers work, live and relax in better environments.

It's about the things you can't see

A Forbo floor is always beautiful and stylish to look at. A floor that's comfortable to live, work and play on. But looks aren't everything; often, it's the things you can't see that really matter.

From how it's made, our footprint...

From how we run our factories to how we choose our ingredients, the way we make our floors is a big part of how we meet our mission to create better environments.

...To how it performs, your footsteps...

We include the whole life of a floor when we think about its sustainability performance. Which means we make sure our floors start performing from the moment they're fitted. The following page shows some examples of our sustainability initiatives. For more details, please visit our web site www.forbo-flooring.co.uk/cbe

Green information

We provide environmental data sheets for our products which are available online. Please visit www.forbo-flooring.co.uk/cbedownloads to download the data sheets.

We also provide high quality electronic information such as **BIM models** with all the relevant and up-to-date information included. Visit www.forbo-flooring.co.uk/BIM to find out more.

Site certification

As well as reducing our impact on the planet, we're also working on caring for the people that touch our business, from employees to suppliers. That's why all our UK manufacturing facilities and most of our sites in Europe are **certified to OHSAS 18001 – Occupational Health and Safety and SA8000®**. The SA8000 Standard, established by SAI and one of the world's pre-eminent social standards, is a tool for implementing international labour standards to protect workers along each step of the supply chain.



We use several transparent independent third party certification systems for our flooring products. We're also keen to include our products in the building rating systems for a sustainable environment.

It's good for Forbo because it helps us share our sustainability story and spot opportunities to improve.

And it's good for you because it shows that other environmental experts agree that our floors are among the most sustainable and high performance available.

The **Nordic Swan**, **Blue Angel**, **BREEAM** and **Natureplus** are just a few of the sustainable product labels that Forbo complies to.

Just visit www.forbo-flooring.co.uk/cbe to find out more.

BREEAM

[Building Research Establishment Environmental Assessment Methodology]

BREEAM is the world's most well-known environmental assessment for buildings. For a full list of all our BREEAM certified products, please visit www.forbo-flooring.co.uk/cbedownloads

SKA

Ska rating is an environmental assessment method, benchmark and standard owned by RICS (Royal Institute of Chartered Surveyors). It's for use in non-domestic fit outs and is mainly used in the office, retail and higher education sectors.

For a full list of our products which meet Ska rating criteria please visit www.forbo-flooring.co.uk/ska

Forbo's commitment to SA8000 the ethical labour standard

Social Accountability 8000 (SA8000) is the international labour and human rights standard which is designed to support businesses achieve compliance to the Modern Slavery Act 2015 which is an Act of the Parliament of the United Kingdom. It is designed to tackle slavery in the UK and consolidates previous offences relating to trafficking and slavery.

SA8000 requirements apply universally regardless of a company's size, its geographic location or industry sector. It is the first auditable standard, suitable for organisations of all sizes anywhere in the world, and provides a framework for assuring all the company's stakeholders that social accountability is being stewarded by the company management.

Which Forbo sites are certified to the standard?

All UK sites, Assendelft & Krommenie (shared), Coevorden, Reims & Chateau Renault (shared).

Summary

Forbo recognises that the SA8000 Standard leverages the power of both businesses and consumers to purchase products made from workplaces that enrich, not denigrate, the livelihoods of people.



How it's made



SAFETY

HYGIENE

WELL-BEING

A state of well-being and comfort can be achieved by being in control of factors that stimulate the senses in the indoor environment. Through their colour and design, floors are capable of creating the atmosphere of an indoor space, making people feel relaxed and comfortable or vibrant and energetic.

Through our flooring solutions it is our ambition to make a positive contribution to your health and well-being in your environment. That is why for us our commitment to sustainability is a commitment to your health.

www.forbo-flooring.co.uk/wellbeing

As our floors are part of the indoor environment in which people live, meet and work, it is our mission to design and offer products that contribute in a positive way to the health and comfort of the individual. "Committed to the health of one" introduces a focus in our commitment to sustainability that centres around all aspects that concern your health, well-being and comfort in relation to our products and services, today as well as for future generations.

For more information please visit
www.forbo-flooring.co.uk/CHO

WHY HEALTH MATTERS

Today more than half of the world's population, over 54%, is living in urbanised areas. On average we are spending around 80%-90% of our time indoors and, astonishing as this may sound, this is estimated to only increase. No wonder there is a growing focus on the quality of the indoor environment, while the attention given to green architecture and healthy buildings also continues to increase in prominence. Not single products, but the building as a whole, is now in the centre of environmental rating systems like LEED or the newly established health rating system, the WELL building standard.



DSDC ACCREDITED FLOORING
AGE INCLUSIVE DESIGN AND FORBO FLOORING



As age-related changes and impairments can often make it more difficult for people to understand and navigate a building, Forbo Flooring Systems has partnered with The University of Stirling’s Dementia Services Development Centre (DSDC) to review over 1000 floor finishes; assessing their suitability for use in dementia-friendly environments.

DSDC is an international centre of knowledge and expertise dedicated to improving the lives of people with dementia. They have drawn on research and practice from across the world, for over 25 years, to provide a comprehensive, up-to-date resource on all aspects of dementia.

The DSDC Accredited product logo is awarded on the merit of the individual product and colourway. This accreditation does not merit the final application. For an environment to be considered ‘dementia-inclusive’ or ‘dementia-friendly’, careful consideration must be given to the specification of adjoining finishes, their performance specification, for example, light reflectance value (LRV), slip resistance and use of pattern, and their suitability for their intended use.

www.forbo-flooring.co.uk/designingfordementia



BACK TO THE FLOOR

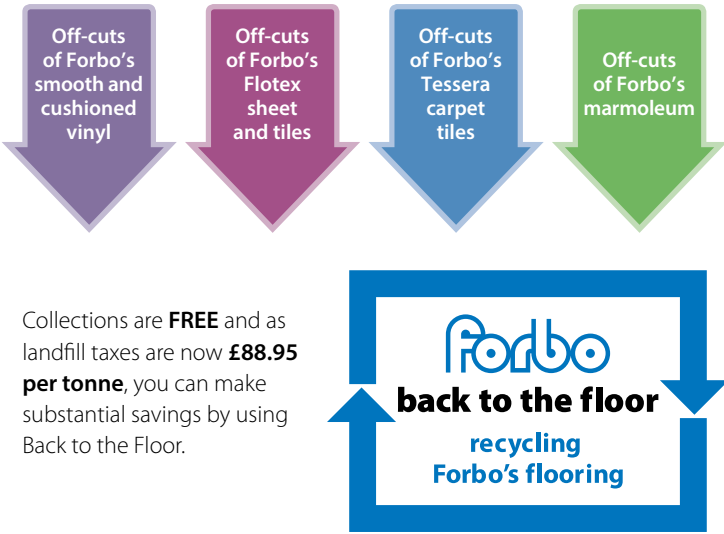
FREE collection and recycling service for Forbo’s installation waste

Back to the Floor is a FREE scheme which collects installation off-cuts of Forbo’s Flotex, Eternal, Sphera and Sarlon smooth sheet vinyl, Allura LVT and Novilon and Novilux cushioned vinyl, Tessera carpet tile and Marmoleum products. Material is collected in small bags and placed in bulk Back to the Floor bags before being collected by Back to the Floor representatives to be recycled.

How does it work?

- Phone 0161 925 8760 for bulk bags/polythene bags
- Collect off-cuts in colour coded polythene bags to keep the material clean and dry
- Place the polythene bags into the corresponding bulk bag and palletise
- When one or more bulk bags are full, phone Back to the Floor on 0161 925 8760 to arrange collection
- You will receive a certificate of commitment for recycling

What is collected by Back to the Floor?



Collections are FREE and as landfill taxes are now £88.95 per tonne, you can make substantial savings by using Back to the Floor.

WARRANTY INFORMATION

Product guarantee period

Linoleum (sheet and tile)	10 years
Project Vinyl (sheet and tile)	10 years
Colorex	10 years
Flotex (sheet and tile)	10 years
Tessera (bitumen back carpet tiles)	10 years
Tessera (softbac carpet tiles)	15 years
Westbond (polyamide carpet tiles)	10 years
Westbond (wool carpet tiles)	7 years
Coral entrance systems	5 years
Nuway Tuftiguard (Aluminium)	10 years
Nuway Grid/Connect/Bamboo	5 years

Forbo Flooring UK Limited (“Forbo”) will guarantee the above named Products for the respective period of years as stated above from the date of delivery from our premises (“the Guarantee Period”) in accordance with the terms and conditions set out opposite:

Guarantee Scope

Forbo’s commercial flooring range (Products) is guaranteed when fitted for interior use only (except where the product specification states that the product may be fitted for exterior use, in which case the terms of this guarantee will apply). The interior use products are not designed for, and are not guaranteed in respect of exterior use.

Forbo guarantees the above named Products against;

- Manufacturing defects notified during the Guarantee Period resulting in abnormal or premature wear of the surface as determined by Forbo.
- Any apparent defects which are advised before or during the fitting. The Customer shall not be entitled to claim under this Guarantee if the defect was apparent on inspecting the material but the Customer continued to install the Product.

RANGES & SUITABLE TYPES OF
HARD FLOORING – ACUTE HOSPITAL

Product Description	Product Reference	Hospital Areas Suitable For :-
Premier Range		
Marmoleum Solid/Linear	Marmoleum	General areas, Circulation areas, Wards, Bedrooms, Gyms/ occupational health, Consulting Rooms, Corridors
Sphera	Sphera homogeneous Vinyl	General areas, Circulation areas, Wards, Bedrooms, Gyms/ occupational health, Consulting Rooms, Corridors
Surestep design safety vinyl	Step	WC's, Laundry, Sluice & Kitchenettes
Safestep R11	Step	Main Kitchen
Aqua/Laguna (bare foot safety vinyl)	Step	Bare Foot Locations - Shower & Bathroom
Allura Flex Loose lay Vinyl tile (tackifier)	Allura	General areas, Offices, Administration Areas, Consulting rooms, Corridors, Chapel
Allura 0.7 LVT	Allura	General areas, Offices, Administration Areas, Consulting rooms, Corridors, Chapel
Eternal	Eternal project Vinyl	General areas, Circulation areas, Wards, Bedrooms, Gyms/ occupational health, Consulting Rooms, Corridors, Chapel
Modular Marmoleum	Marmoleum Tile	General areas, Circulation areas, Gyms/occupational health, Consulting Rooms, Chapel
Standard Range		
Marmoleum Marbled	Marmoleum	General areas, Circulation areas, Wards, Bedrooms, Gyms/ occupational health, Consulting Rooms, Corridors
Sphera	Sphera homogenous Vinyl	General areas, Circulation areas, Wards, Bedrooms, Gyms/ occupational health, Consulting Rooms, Corridors
Surestep Original	Step	WC's, Laundry, Sluice & Kitchenettes
Safestep R11	Step	Main Kitchen
Aqua/Laguna (bare foot safety vinyl)	Step	Bare Foot Locations - Shower & Bathroom
Allura 0.55 LVT	Allura	General areas, Offices, Administration Areas, Consulting rooms, Corridors, Chapel
Eternal	Eternal project Vinyl	General areas, Circulation areas, Wards, Bedrooms, Gyms/ occupational health, Consulting Rooms, Corridors, Chapel
Modular Marmoleum	Marmoleum Tile	General areas, Circulation areas, Gyms/occupational health, Consulting Rooms, Chapel
Budget Range		
Linoflex	Contract Marmoleum	General areas, Circulation areas, Wards, Bedrooms, Gyms/ occupational health, Consulting Rooms, Corridors
Solidstep	Step	WC's, Laundry, Sluice & Kitchenettes
Safestep R11	Step	Main Kitchen
Aqua/Laguna (bare foot safety vinyl)	Step	Bare Foot Locations - Shower & Bathroom
Eternal original	Eternal Original	General areas, Circulation areas, Wards, Bedrooms, Gyms/ occupational health, Consulting Rooms, Corridors, Chapel

RANGES & SUITABLE TYPES OF
HARD FLOORING – MENTAL HEALTH

Product Description	Product Reference	Hospital Areas Suitable For :-
Premier Range		
Marmoleum Solid/Linear	Marmoleum	General areas, Circulation areas, Wards, Bedrooms, Gyms/ occupational health, Consulting Rooms, Corridors
Sphera	Sphera homogeneous Vinyl	General areas, Circulation areas, Wards, Bedrooms, Gyms/ occupational health, Consulting Rooms, Corridors
Surestep design safety vinyl	Step	WC's, Laundry, Sluice & Kitchenettes
Safestep R11	Step	Main Kitchen
Aqua/Laguna (bare foot safety vinyl)	Step	Bare Foot Locations - Shower & Bathroom
Allura Flex Loose lay Vinyl tile (tackifier)	Allura	General areas, Offices, Administration Areas, Consulting rooms, Corridors, Chapel
Allura 0.7 LVT	Allura	General areas, Offices, Administration Areas, Consulting rooms, Corridors, Chapel
Eternal	Eternal project Vinyl	General areas, Circulation areas, Wards, Bedrooms, Gyms/ occupational health, Consulting Rooms, Corridors, Chapel
Standard Range		
Marmoleum Marbled	Marmoleum	General areas, Circulation areas, Wards, Bedrooms, Gyms/ occupational health, Consulting Rooms, Corridors
Sphera	Sphera homogenous Vinyl	General areas, Circulation areas, Wards, Bedrooms, Gyms/ occupational health, Consulting Rooms, Corridors
Surestep Original	Step	WC's, Laundry, Sluice & Kitchenettes
Safestep R11	Step	Main Kitchen
Aqua/Laguna (bare foot safety vinyl)	Step	Bare Foot Locations - Shower & Bathroom
Allura 0.55 LVT	Allura	General areas, Offices, Administration Areas, Consulting rooms, Corridors, Chapel
Eternal	Eternal project Vinyl	General areas, Circulation areas, Wards, Bedrooms, Gyms/ occupational health, Consulting Rooms, Corridors, Chapel
Modular marmoleum	Marmoleum Tile	General areas, Circulation areas, Gyms/occupational health, Consulting Rooms, Chapel
Budget Range		
Linoflex	Contract Marmoleum	General areas, Circulation areas, Wards, Bedrooms, Gyms/ occupational health, Consulting Rooms, Corridors
Solidstep	Step	WC's, Laundry, Sluice & Kitchenettes
Safestep R11	Step	Main Kitchen
Aqua/Laguna (bare foot safety vinyl)	Step	Bare Foot Locations - Shower & Bathroom
Eternal original	Eternal Original	General areas, Circulation areas, Wards, Bedrooms, Gyms/ occupational health, Consulting Rooms, Corridors, Chapel

RANGES & SUITABLE TYPES OF
SOFT FLOORING – ACUTE HOSPITAL

Product Description	Product Reference	Hospital Areas Suitable For :-
Premier Range		
Flotex Vision	Flotex sheet	General areas, Circulation areas, Wards, Bedrooms, Gyms/ occupational health, Consulting Rooms, Corridors
Flotex Planks	Flotex Planks	General areas, Circulation areas, Bedrooms, Gyms/occupational health, Consulting Rooms, Corridors
Cut and Loop carpet tile Alignment	Tessera Alignment	General areas, Consulting Rooms,
Textured carpet tile Seagrass	Tessera Seagrass	General areas, Consulting Rooms,
Textured carpet tile In Touch	Tessera In-Touch	General areas, Consulting Rooms,
Synergy texured loop piles with a vinyl tile and cut pile tile	Tessera Synergy	General areas, Consulting Rooms,
Westbond N9000 plain	Westbond	General areas, Consulting Rooms,
Coral Welcome/Brush	Coral	Main entrance
Standard Range		
Flotex Vision	Flotex sheet	General areas, Circulation areas, Wards, Bedrooms, Gyms/ occupational health, Consulting Rooms, Corridors
Flotex Planks	Flotex Planks	General areas, Circulation areas, Bedrooms, Gyms/occupational health, Consulting Rooms, Corridors
Flotex Tiles	Flotex Tiles	General areas, Circulation areas, Bedrooms, Gyms/occupational health, Consulting Rooms, Corridors
Textured loop pile carpet tile Inline	Tessera Inline	General areas, Consulting Rooms,
Textured loop pile carpet tile Diffusion	Tessera Diffusion	General areas, Consulting Rooms,
Random Lay and batchless carpet tile	Tessera Mix	General areas, Consulting Rooms,
Coral Classic	Coral	Main entrance
Budget Range		
Flotex Colour Sheet	Flotex Colour sheet	General areas, Circulation areas, Wards, Bedrooms, Gyms/ occupational health, Consulting Rooms, Corridors
Flotex Colour Tiles	Flotex Tiles	General areas, Circulation areas, Bedrooms, Gyms/occupational health, Consulting Rooms, Corridors
Low Level Loop Pile carpet tile Teviot	Tessera Teviot	General areas, Consulting Rooms,
Low Level Loop Pile carpet tile Outline/Layout	Tessera Outline/Layout	General areas, Consulting Rooms,
Low Level Loop Pile carpet tile Create Space 1	Tessera Create space 1	General areas, Consulting Rooms,
Low Level Loop Pile carpet tile Create Space 2	Tessera Create Space 2	General areas, Consulting Rooms,

RANGES & SUITABLE TYPES OF
SOFT FLOORING – MENTAL HEALTH

Product Description	Product Reference	Hospital Areas Suitable For :-
Premier Range		
Flotex Vision	Flotex sheet	General areas, Circulation areas, Wards, Bedrooms, Gyms/ occupational health, Consulting Rooms, Corridors
Flotex Planks	Flotex Planks	General areas, Circulation areas, Bedrooms, Gyms/occupational health, Consulting Rooms, Corridors
Cut and Loop carpet tile Alignment	Tessera Alignment	General areas, Consulting Rooms,
Textured carpet tile Seagrass	Tessera Seagrass	General areas, Consulting Rooms,
Textured carpet tile In Touch	Tessera In-Touch	General areas, Consulting Rooms,
Synergy texured loop piles with a vinyl tile and cut pile tile	Tessera Synergy	General areas, Consulting Rooms,
Westbond N9000 plain	Westbond	General areas, Consulting Rooms,
Coral Welcome/Brush	Coral	Main entrance
Standard Range		
Flotex Vision	Flotex sheet	General areas, Circulation areas, Wards, Bedrooms, Gyms/ occupational health, Consulting Rooms, Corridors
Flotex Planks	Flotex Planks	General areas, Circulation areas, Bedrooms, Gyms/occupational health, Consulting Rooms, Corridors
Flotex Tiles	Flotex Tiles	General areas, Circulation areas, Bedrooms, Gyms/occupational health, Consulting Rooms, Corridors
Textured loop pile carpet tile Inline	Tessera Inline	General areas, Consulting Rooms,
Textured loop pile carpet tile Diffusion	Tessera Diffusion	General areas, Consulting Rooms,
Random Lay and batchless carpet tile	Tessera Mix	General areas, Consulting Rooms,
Coral Classic	Coral	Main entrance
Budget Range		
Flotex Colour Sheet	Flotex Colour sheet	General areas, Circulation areas, Wards, Bedrooms, Gyms/ occupational health, Consulting Rooms, Corridors
Flotex Colour Tiles	Flotex Tiles	General areas, Circulation areas, Bedrooms, Gyms/occupational health, Consulting Rooms, Corridors
Low Level Loop Pile carpet tile Teviot	Tessera Teviot	General areas, Consulting Rooms,
Low Level Loop Pile carpet tile Outline/Layout	Tessera Outline/Layout	General areas, Consulting Rooms,
Low Level Loop Pile carpet tile Create Space 1	Tessera Create space 1	General areas, Consulting Rooms,
Low Level Loop Pile carpet tile Create Space 2	Tessera Create Space 2	General areas, Consulting Rooms,



Forbo Flooring Systems is part of the Forbo Group, a global leader in flooring which offers a full range of flooring products for Healthcare. High quality linoleum, vinyl, textile, flocked and entrance flooring products which combine functionality, colour and design meeting all project requirements from entrance to exit.

UK

Forbo Flooring UK Limited
High Holborn Road
Ripley
Derbyshire DE5 3NT

London EC1 showroom

79 St John Street, Clerkenwell
London EC1M 4NR
Tel: 0207 553 9300

For commercial enquiries:

If calling from the North,
London & South East
Tel: 0800 0282 162
Fax: 01772 646 912
bcs.flooring.uk@forbo.com

If calling from Scotland,
Midlands & South West
Tel: 0800 0935 258
Fax: 01592 643 999
kcs.flooring.uk@forbo.com

Nuway enquiries:

Tel: 01773 740 688
Fax: 01773 740 640
efs.flooring.uk@forbo.com

Residential enquiries:

Tel: 0800 0935 846
Fax: 01592 643 999
krccs.flooring.uk@forbo.com
www.forbo-flooring.co.uk

Sample orders:

Tel: 0800 731 2369
Fax: 0843 319 1831
samples.uk@forbo.com

Ireland

Forbo Ireland Ltd
2 Deansgrange Business Park
Blackrock
Co Dublin

Tel: 00353 1 2898 898
Fax: 00353 1 2898 177
info.ireland@forbo.com
www.forbo-flooring.ie

Find us on



Registered office:

Forbo Flooring UK Limited
High Holborn Road
Ripley
Derbyshire DE5 3NT
Registered in England 9200318

