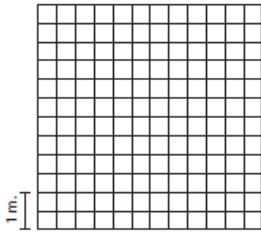
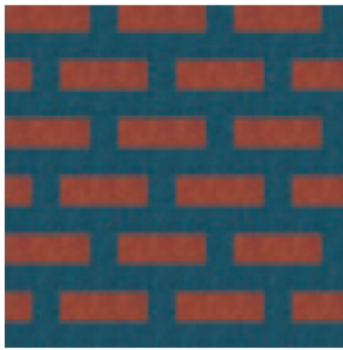


EXPLANATION OF THE COLOUR FLOORPLANS



PC-10



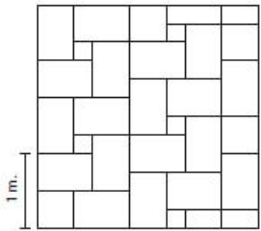
PC-11

50 x 50 cm: t3203 37,5% t3242 62,5%

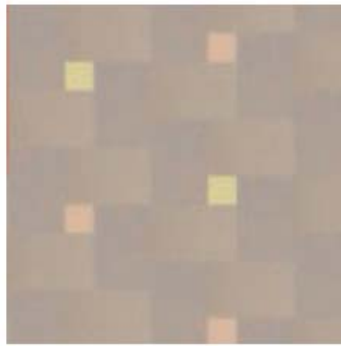


PC-12

50 x 50 cm: t3224 10% t3238 10% t3242 10% t3243 10% t3244 10%
t3245 10% t3251 10% t3563 10% t3566 10% t3887 10%



PC-20



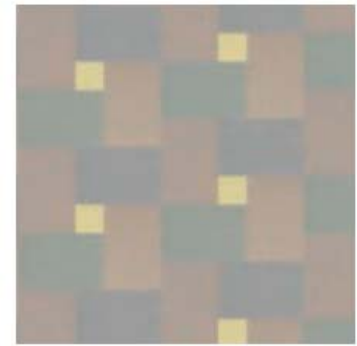
PC-21

25 x 25 cm: t3563 5% t3566 5%
75 x 50 cm: t3712 45% t3715 45%



PC-22

25 x 25 cm: t3882 10%
75 x 50 cm: t3713 45% t3714 45%



PC-23

25 x 25 cm: t3566 10%
75 x 50 cm: t3712 22,5% t3713 22,5%
t3714 22,5% t3715 22,5%