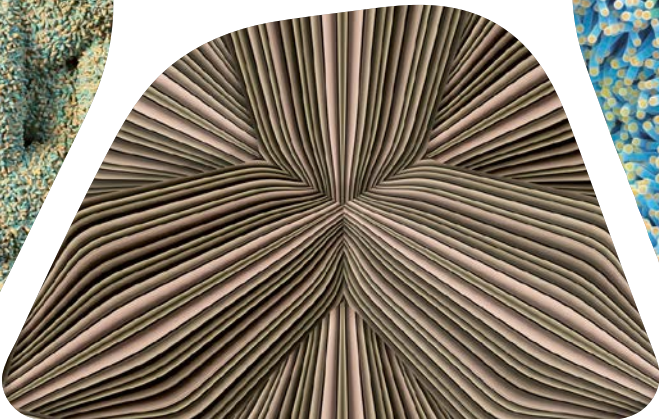
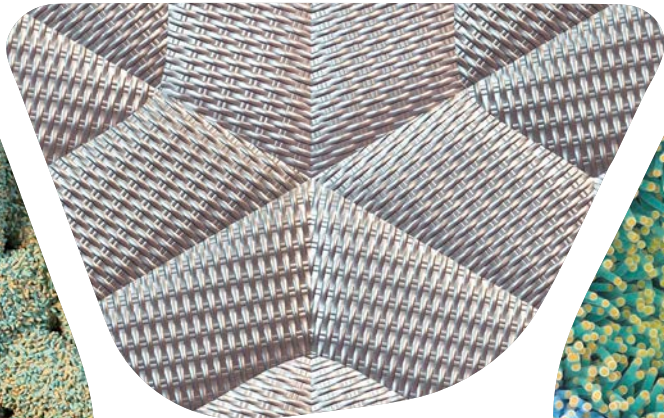


FLOOR COVERINGS

CREATED
BY

MAC STOPA



Mac Stopa.

flotex® | eternal®

creating better environments

Forbo

FLOORING SYSTEMS

Mac Stopa.

by MAC STOPA



'As an architect, interior designer and designer of transmission forms, this collection is inspired by my experiences, observations and fascinations derived from a variety of design fields. These ideas have been visualised in partnership with Forbo Flooring through the medium of high resolution digital printing both on textile and vinyl substrates. Each one giving it's unique characteristics to my imagery.

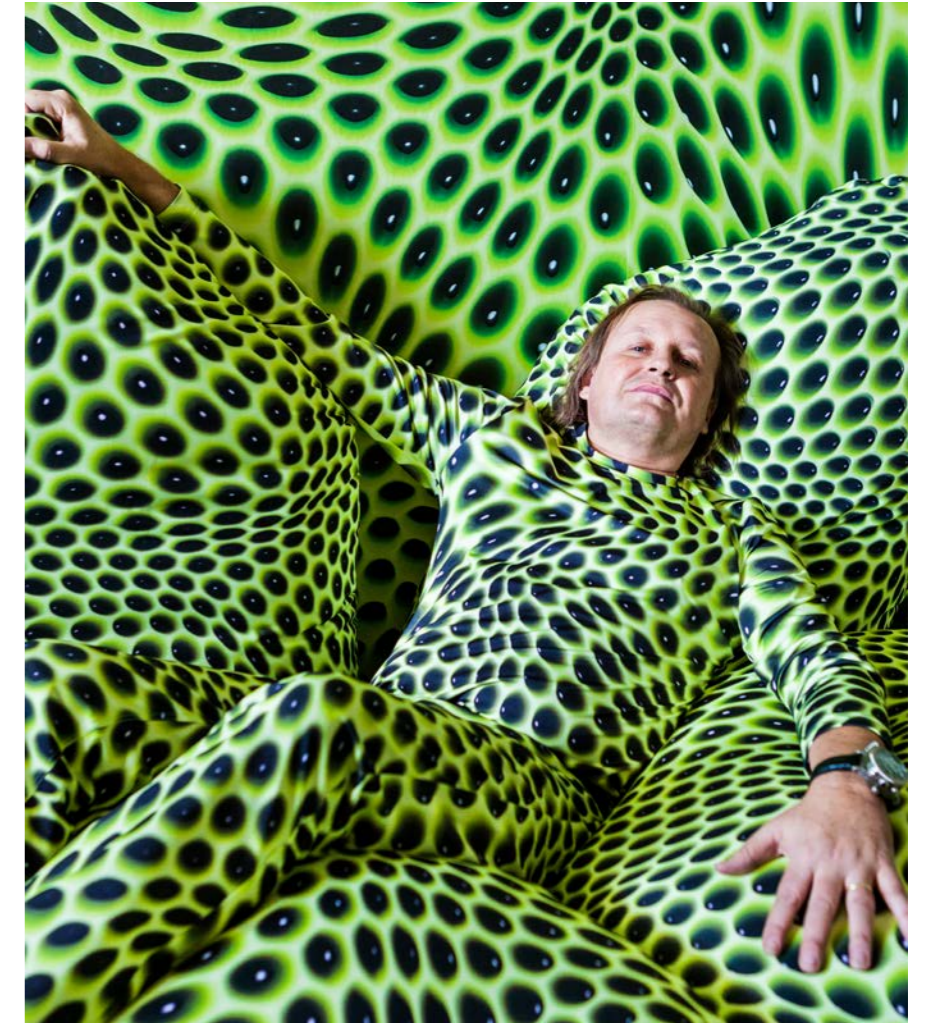
I have based the collection on the idea of architectural modularity and the desire to organize the space around us in an architectural way. This is realised through the use of repetitive geometric forms, such as hexagons, trapezoids or braided structures which form the base of the collection.

My experience in Interior design has inspired me to combine those structures with the textures of classic interior materials such as wood, fabrics, metal and leather.

As a designer of industrial forms, I am fascinated by organic structures but also new technologies related to 3D printing. By combining these elements with the geometric shapes, the designs I have created achieve a quality of softness and three-dimensionality.

When designing, I like to experiment, I observe the beauty of nature and the physical phenomena that surround us. This often becomes the inspiration for new projects. A unique artistic interpretation.

Throughout the collection there is a recurrent theme based on the variable colours of adjacent modular forms. In nature this is associated with the refraction and absorption of light reflections. I have used it as a design tool, giving each pattern dimension and subtlety which, when combined with the traditional familiarity of modular patterning, creates an exciting fusion of classic form and 21st century technology.'



MAC STOPA MY EXPERIENCE IN INTERIOR DESIGN INSPIRED ME TO
USE MATERIALS SUCH AS WOOD, FABRICS, METAL AND LEATHER

FLOWER



360027E | knit

Geometric yet seemingly organic, Flower combines elements that both challenge and reassure us in a way that provokes thought and discussion blurring the space between nature and design.

CREATED BY MAC STOPA

flotex® | eternal®

How to order the right product :

360010

F

= 360010F

colour number

product type*

flotex®



360004 | grey jeans



360005 | stripes



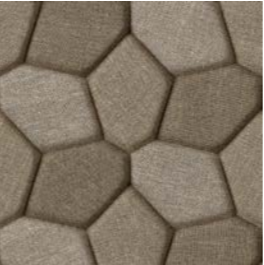
360006 | linear beige



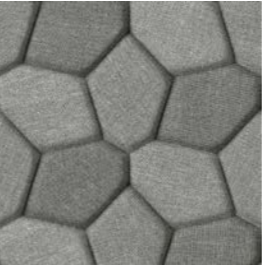
360007 | linear grey



360008 | woven



360009 | jute



360010 | flannel



360011 | indigo jeans

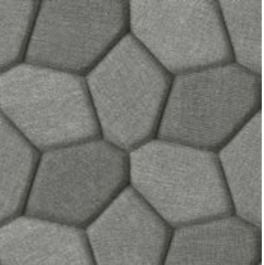
eternal®



360027 | knit



360029 | stripes XL



360010 | flannel



360028 | indigo jeans XL



360030 | light wood



360031 | honey wood

The outcome of the colour differs per chosen product.
The displayed design represents a space of 100 x 100 cm.
*Find the right product code and product explanation on page 12.

TRAPEZOID



360012F | metal plate **360016E** | metal weave

Mechanical and repetitive Trapezoid forms blend with recognisable material surfaces, each one playing with dimension and the perception of shape within the patterns context.

CREATED BY MAC STOPA

flotex® | eternal®

How to order the right product :

360012

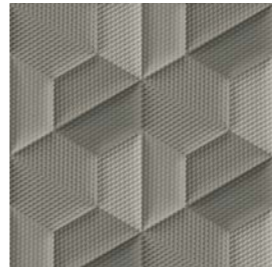
F

= 360012F

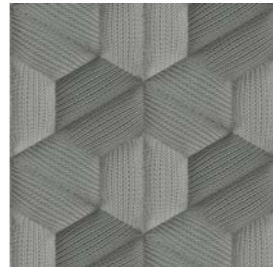
colour number

product type*

flotex®



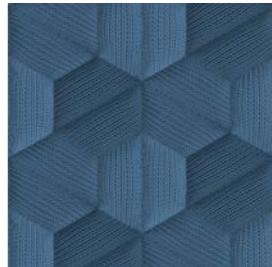
360012 | metal plate



360013 | grey pleated



360014 | jeans



360015 | ink pleated



360016 | metal weave



360017 | braided



360018 | tweed

eternal®



360016 | metal weave



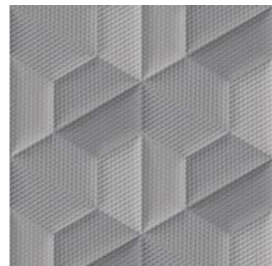
360017 | braided



360018 | tweed



360014 | jeans



360012 | metal plate



360025 | brown leather

The outcome of the colour differs per chosen product.
The displayed design represents a space of 100 x 100 cm.
*Find the right product code and product explanation on page 12.

WICKER



360023F | jeans grey XS **360026E** | jeans blue

Based on the traditional structure of a woven form, Wicker transcends the ordinary by taking a range of textures that although familiar become exciting and unusual in the context of this juxtaposition.

CREATED BY MAC STOPA

flotex® | eternal®

How to order the right product :		
360020	F	= 360020F
colour number	product type*	

flotex®



360019 | graphic wood



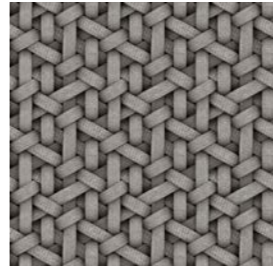
360020 | weave



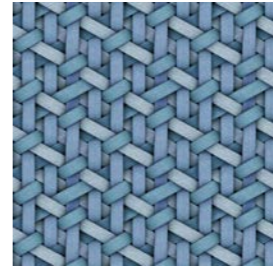
360021 | denim



360022 | canvas XS



360023 | jeans grey XS

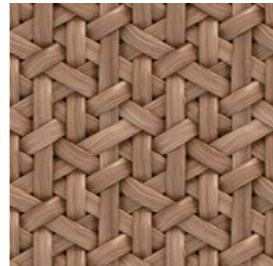


360024 | jeans blue XS

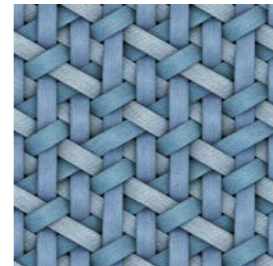
eternal®



360033 | canvas



360032 | tropical wood



360026 | jeans blue



360034 | grass



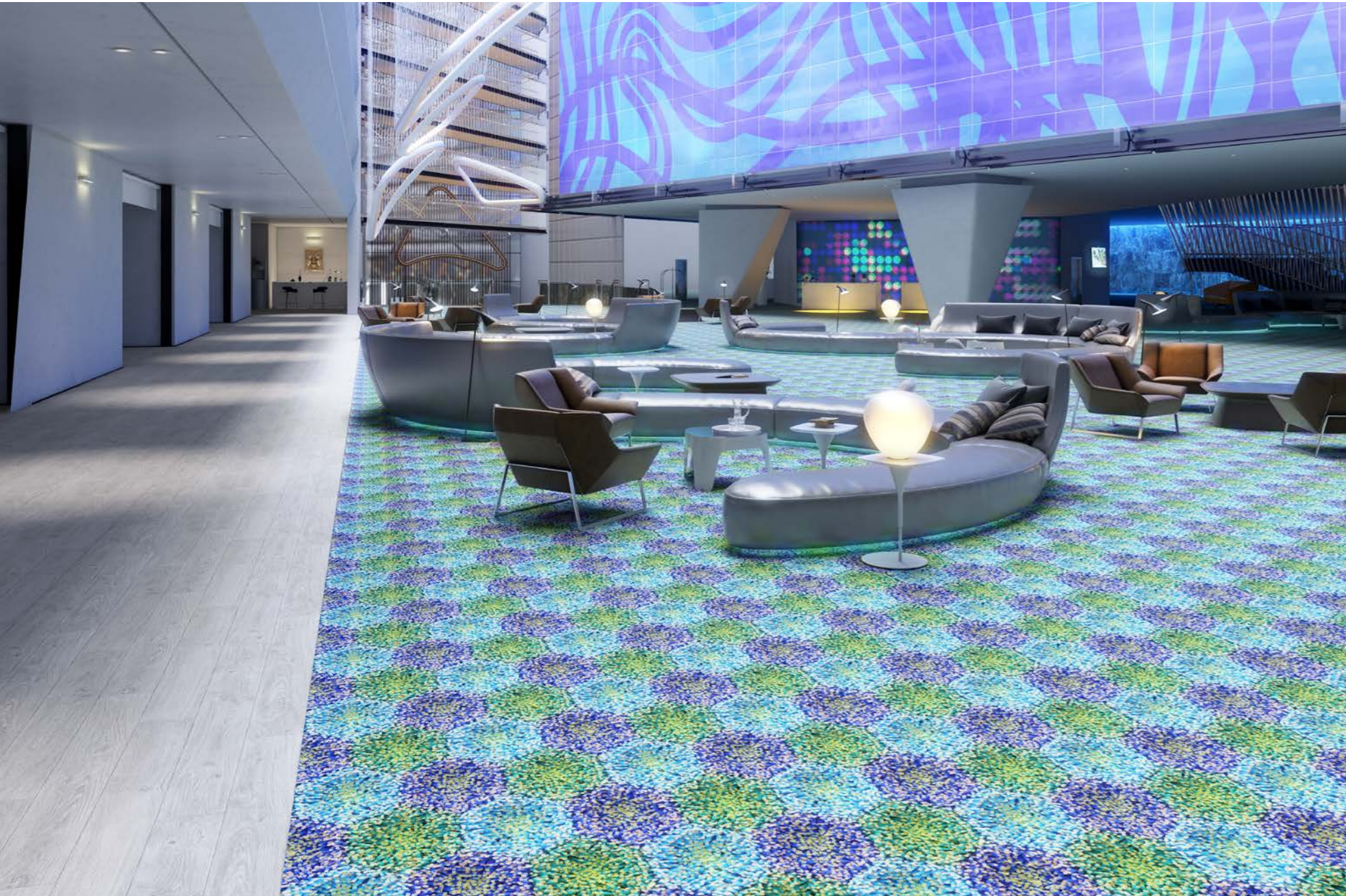
360020 | weave



360021 | denim

The outcome of the colour differs per chosen product.
The displayed design represents a space of 100 x 100 cm.
*Find the right product code and product explanation on page 12.

HEXAGON



Flotex naturals **010078F** | shaded oak **360001F** | blue anemone

A seemingly bizarre synergy of conventional form with an unexpected twist, Hexagon is both curious and strangely compelling in a uniquely inspired way.

CREATED BY MAC STOPA

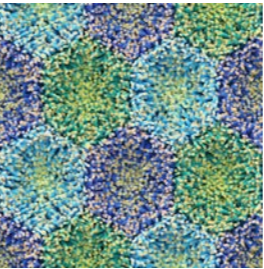
flotex® | eternal®

How to order the right product :		
360003	F	= 360003F
colour number	product type*	

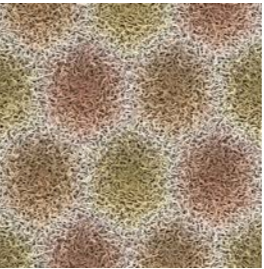
flotex®



360003 | fur cool



360001 | blue anemone

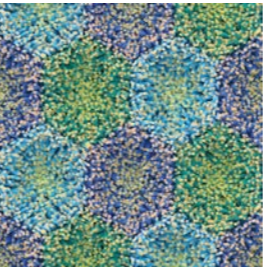


360002 | fur warm

eternal®



360003 | fur cool





360001 | blue anemone

The outcome of the colour differs per chosen product.
The displayed design represents a space of 100 x 100 cm.
*Find the right product code and product explanation on page 12.

CREATED BY **MAC STOPA**
HIGH DEFINITION DIGITAL PRINTING

With over 20 years of experience in high definition digital printing, Forbo Flooring Systems offers you a range of high quality floor coverings, tailored to your needs. Whatever the segment or field of application, Mac Stopa's creations will bring the floor to life!

CHOOSE THE TYPE OF FLOORING THAT SUITS YOUR PROJECT.
You can find all technical information about these product constructions on our website under **www.forbo-flooring.com/macstopa**

TEXTILE		ORDER ON DEMAND please contact your local sales for detailed information
	Flotex Flocked Flooring is a unique textile flooring that combines the hard wearing & durable characteristics of a resilient floor with the quality, warmth and comfort of a carpet. Discover the toughness and durability of Flotex which comes as a result of the 80 million nylon 6.6. fibres per m2, while experiencing the quietness and comfort normally only associated with a carpet as a result of the impervious cushioned backing.	<p>To order your floor as a flotex floor use the colour code from the flotex designs and add an « F ».</p> <p>So with 360010F you order design Flower in the colour flannel in Flotex</p> <div><div>360010</div><div>F</div><div>= 360010F</div><div>colour number product type</div></div> <p>Minimum order quantity: as of 6m²</p>
VINYL		ORDER ON DEMAND please contact your local sales for detailed information
	This vinyl sheet collection has been created to work across a wide variety of application areas. Create any desired atmosphere in every space. For every moment of the day Eternal offers the ideal solution in working, learning or relaxing environments. The balanced construction offers lowest residual indentation and the PUR Pearl finish brings the best protection against scuff and scratching.	<p>To order your floor as eternal floor use the colour code from the vinyl designs and add an « E ».</p> <p>So with 360010E you order design Flower in the colour flannel in Eternal</p> <div><div>360010</div><div>E</div><div>= 360010E</div><div>colour number product type</div></div> <p>Minimum order quantity: as of 30m²</p>

Mac Stopa.

by MAC STOPA



360017E | braided

Mac Stopa.

by MAC STOPA

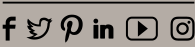


360018F | tweed



360005F | stripes

Find us on



creating better environments

More information:
Forbo Flooring B.V.
Postbus 13
1560 AA Krommenie
Tel. (075) 647 78 80
question@forbo.com
www.forbo-flooring.com

