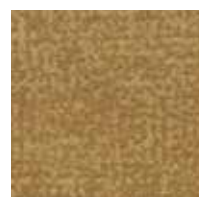


flotex® colour FR
metro

Flotex Metro is a versatile semi-plain design which covers a wide and modern colour bank including 8 statement neon colours. The understated pattern conveys texture without definite form, creating an authentic feel that is unique to Flotex. This collection lends itself to education, aged care or retail applications but will work in any location where a subtle textile look is desired.

There is no pattern repeat on Metro as this range has been designed with Green Design principles.



246013 | amber



246012 | sand



246036 | gold



246025 | tangerine



246005 | nimbus



246018 | mineral



246011 | pebble



246037 | apple



246019 | citrus



246003 | melon



246006 | grey



246029 | truffle



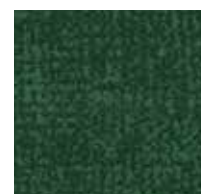
246028 | jade



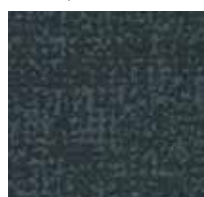
246033 | emerald



246021 | moss



246022 | evergreen



246024 | carbon



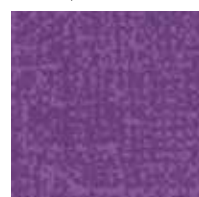
246015 | cocoa



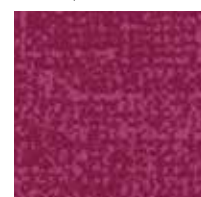
246004 | gull



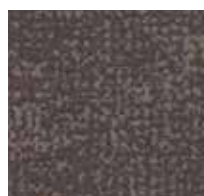
246002 | tempest



246034 | lilac



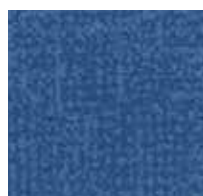
246035 | pink



246009 | pepper



246016 | grape



246020 | lagoon



246032 | petrol



246031 | cherry



246017 | berry



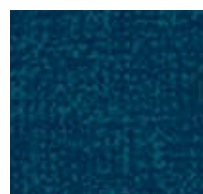
246014 | concrete



246027 | burgundy



246001 | indigo



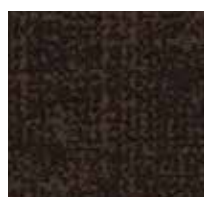
246023 | horizon



246030 | cinnamon



246026 | red



246010 | chocolate



246007 | ash



246008 | anthracite

flotex® colour FR
calgary

Flotex Calgary offers a wide colour choice in a soft, natural design that works well in larger areas. The pattern can be easily combined with complementary Flotex or resilient ranges and is the perfect choice for application areas that require a muted ambience.



290008 | saffron



290019 | carbon



290030 | spa



290021 | aqua



290014 | lime



290027 | amber



290016 | apple



290012 | cement



290011 | quartz



290006 | sahara



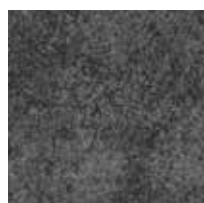
290028 | ginger



290018 | fossil



290025 | riviera



290002 | grey



290026 | linen



290007 | suede



290001 | sky



290004 | menthol



290024 | fire



290023 | espresso



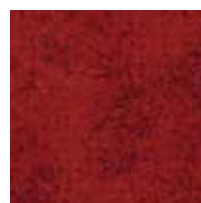
290013 | caramel



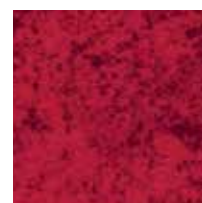
290005 | melon



290029 | salmon



290031 | cherry



290003 | red



290017 | crystal



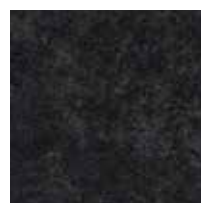
290022 | condor



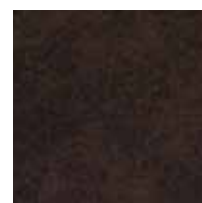
290015 | azure



290009 | moss



290010 | ash



290020 | toffee

flotex® colour FR
penang

Flotex Penang offers a stunning look for any modern environment. It creates a subtle linear effect and comes in a range of rich modern shades.



482006 | sage



482003 | citrus



482009 | mineral



482022 | amber



482017 | nimbus



482018 | bamboo



482019 | ginger



482075 | flax



482010 | evergreen



482025 | forest



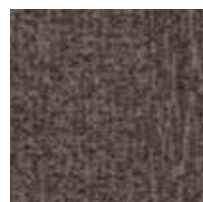
482005 | smoke



482021 | silver



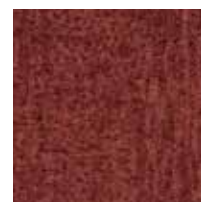
482015 | beige



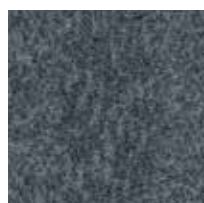
482108 | pepper



482016 | coral



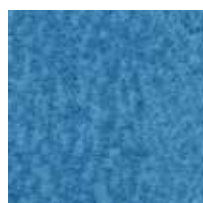
482073 | brick



482004 | mercury



482020 | shale



482011 | sapphire



482044 | gull



482023 | dusk



482013 | berry



482007 | zinc



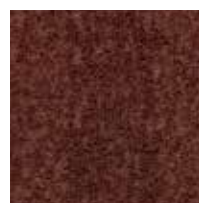
482037 | grey



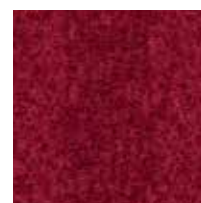
482026 | neptune



482008 | tempest



482014 | copper



482012 | red



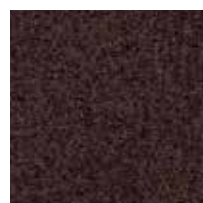
482031 | ash



482001 | anthracite



482002 | concrete



482114 | chocolate



482024 | purple

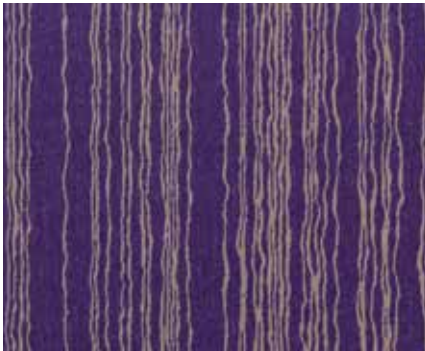


482116 | azure

Flotex FR is unique, combining the cleaning properties and durability of a resilient flooring with the comfort, slip resistance and acoustic properties usually associated with textiles.

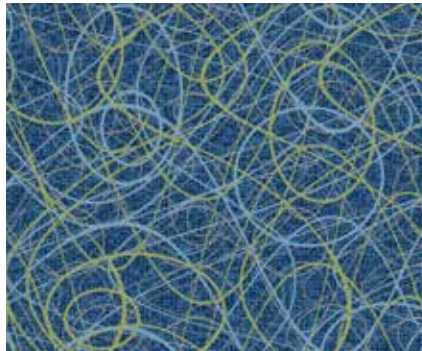
Flotex Vision FR offers an infinite number of design options ranging from abstracts with an intricate colour spectrum to realistic images of natural materials.

With over 500 items to choose from, Flotex Vision is best viewed on Forbo's online digital library which is continuously updated. The designs in Flotex Vision FR fall into six broad categories, each of which represents a different design direction: Floral, Lines, Shape, Pattern, Image and Naturals.



Lines

Line or stripe designs, each with their own characteristics, ranging from muted and sophisticated colourways to very complex and multi-colour patterns.



Pattern

Textured, non-directional visuals created through the intricate interplay of networks and patterns.



Floral

A selection of floral designs, ranging from abstract, graphic flower motifs to romantic images of roses and butterflies.



Shape

A collection of organic shapes and motifs delivering beautiful all-over patterns, including both contemporary and traditional designs.



Naturals

This collection offers photorealistic images of natural materials such as wood, stone, ceramics and cork floors. The design technology creates amazingly realistic aesthetics, with the added benefits of improved acoustics, slip resistance and reduced maintenance costs.



Image

A design category containing a wide variety of photographic images. Grass, sand, water drops, buttons and street maps are just some of the possibilities to be found within this intriguing range.

To see the full collection, please look on the www.forbo-flooring.com website at: Products / Flotex / Flotex Vision / Flotex Vision Digital Library