



TEXTILE FLOCKED FLOORING

flotex® hospitality & leisure



30 x 2 m

creating better environments

forbo
FLOORING SYSTEMS

FLOTEX HOSPITALITY & LEISURE

At Forbo we are passionate about our customers and meeting their expectations. We understand the needs and individual requirements of each segment. This is why we have developed the Flotex Vision Hospitality and Leisure collection especially for you.

Whether in hotels, leisure areas or restaurants, you need a high performance floor covering that provides comfort and safety while giving pride of place to design. And in these spaces in particular, who wouldn't dream of a strikingly designed floor that's easy to live with?

Thanks to our high-definition printing technology, we can offer you a wide selection of designs that will suit every area. Whether a trendy hotel in the heart of the city, a cosy establishment in the mountains, or a charming traditional restaurant, each application will find the design that tells its story.

Aware of the challenges of the hospitality and leisure sector, where you often only have one chance to make a good first impression, we have created unique designs, which can be coordinated and are available in various sizes. We even have some especially created for corridors.

Choosing Flotex and its unique construction is the promise of a design textile floor covering that will keep its original appearance over time. It is the assurance that your visitors will be welcomed in the environment you dreamed of.

MAKING
SPACES INTO
UNIQUE PLACES

CONTENTS

flotex floral 4 - 15

flotex textile 16 - 17

flotex geometric & graphic 18 - 37

flotex statement 38 - 59

To learn more about the
Flotex Hospitality and Leisure range, please visit:
www.forbo-flooring.com/flotex-hospitality-leisure



FLORAL | VERSAILLES

pattern repeat: 200 cm x 50 cm



pattern area shown is:
200 cm x 200 cm (large sample)
92 cm x 92 cm (small sample)

256001 | moonstone



256006 | topaz



256003 | jade



256002 | diamond



256005 | sapphire



256004 | ruby



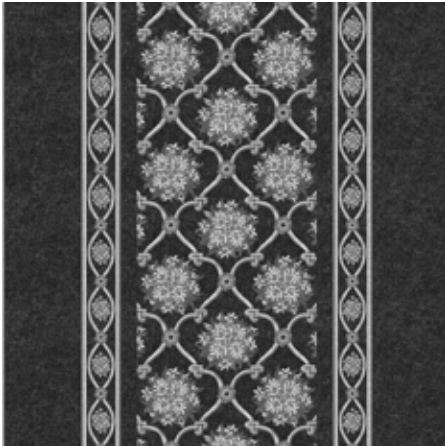
Using European (EN) approved testing methodology we have graded every item in the collection on its ability to 'hide' dirt or staining that occurs during normal use depending on the application.

- = superior appearance rating
- = good appearance rating
- = moderate appearance rating

VERSAILLES | MOONSTONE 256001

FLORAL | CHAMBORD BORDER

pattern repeat: 200 cm x 200 cm



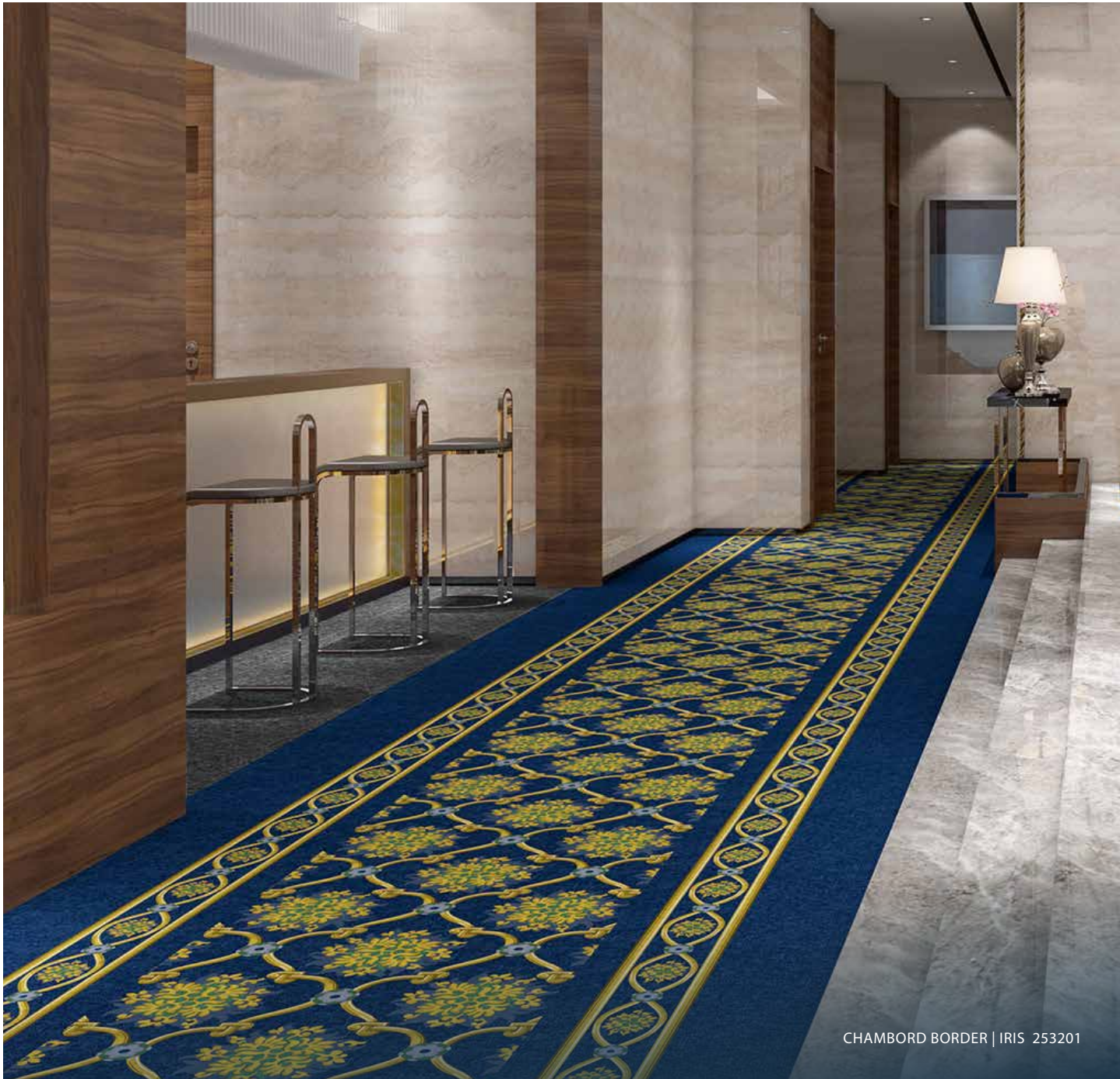
253202 | lilly



253201 | iris



253203 | prune



CHAMBORD BORDER | IRIS 253201

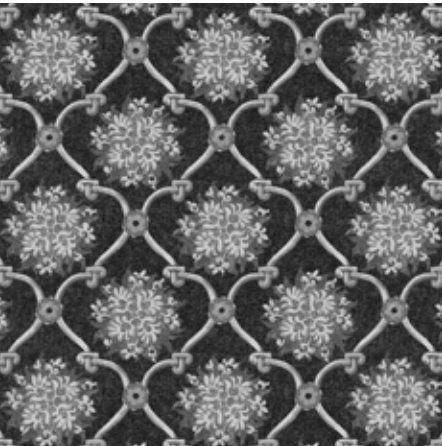
pattern area shown is: 200 cm x 200cm

FLORAL | CHAMBORD

pattern repeat: 200 cm x 200 cm



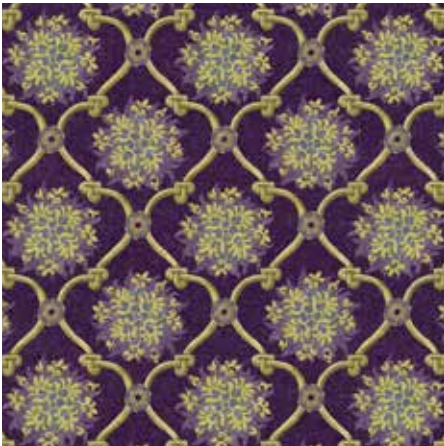
CHAMBORD | IRIS 253101



253102 | lilly



253101 | iris



253103 | prune

pattern area shown is: 128 cm x 128 cm

Using European (EN) approved testing methodology we have graded every item in the collection on its ability to 'hide' dirt or staining that occurs during normal use depending on the application.

- = superior appearance rating
- = good appearance rating
- = moderate appearance rating



FLORAL | BLOOM

pattern repeat for both designs: 200 cm x 200 cm



241001 | navy pattern area shown is: 200 cm x 200 cm

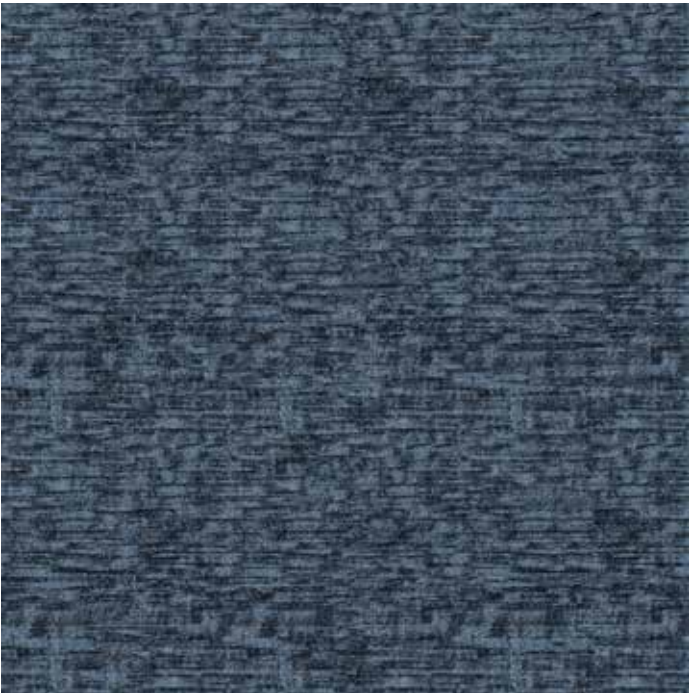
Bloom and Bloom Fresco are designed to coordinate providing flexibility to create your unique space

Using European (EN) approved testing methodology we have graded every item in the collection on its ability to 'hide' dirt or staining that occurs during normal use depending on the application.

- = superior appearance rating
- = good appearance rating
- = moderate appearance rating

○

FLORAL | BLOOM FRESCO



242001 | navy pattern area shown is: 200 cm x 200 cm



VIVIENNE | CAMEL 248002

pattern area shown is:
200 cm x 200 cm (large sample)
92 cm x 92 cm (small sample)



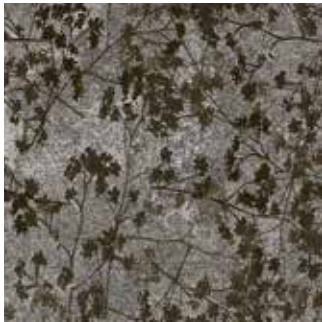
248002 | caramel

○



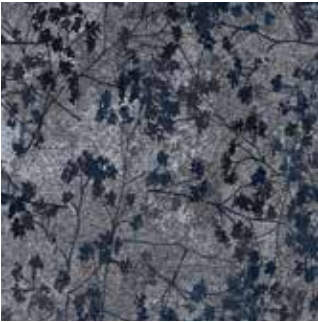
248003 | olive

○



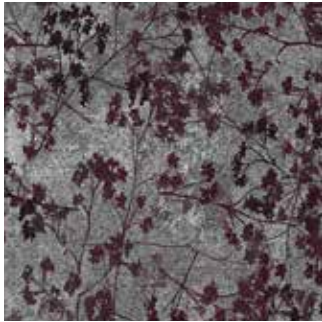
248004 | chocolat

○



248001 | bleu nuit

○



248005 | lie-de-vin

○

○ = superior appearance rating
● = good appearance rating
● = moderate appearance rating

Using European (EN) approved testing methodology we have graded every item in the collection on its ability to 'hide' dirt or staining that occurs during normal use depending on the application.

FLORAL | ELDERFLOWER

pattern repeat: 200 cm x 100 cm



ELDERFLOWER | PISTACHIO 254102



254101 | almond

pattern area shown is: 63.5 cm x 63.5 cm



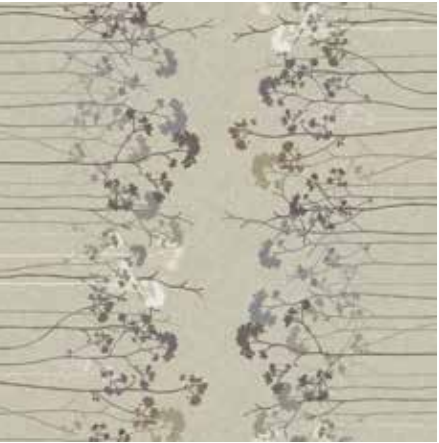
254103 | blueberry



254102 | pistachio

FLORAL | ELDER BORDER

pattern repeat: 200 cm x 140 cm



254201 | almond



254203 | blueberry



254202 | pistachio

pattern area shown is: 140 cm x 140 cm



ELDER BORDER | ALMOND 254201

Using European (EN) approved testing methodology we have graded every item in the collection on its ability to 'hide' dirt or staining that occurs during normal use depending on the application.

○ = superior appearance rating
● = good appearance rating
● = moderate appearance rating

FLORAL | SILHOUETTE

pattern repeat: 200 cm x 50 cm



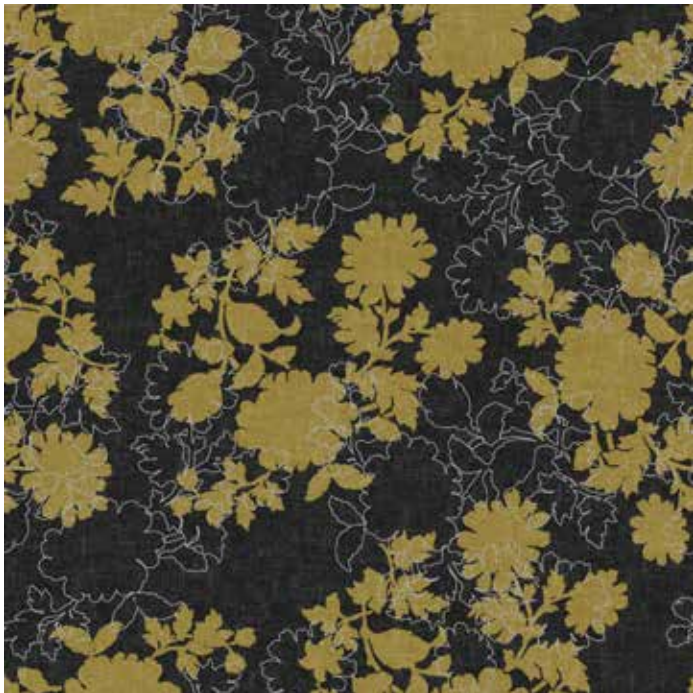
Using European (EN) approved testing methodology we have graded every item in the collection on its ability to 'hide' dirt or staining that occurs during normal use depending on the application.

○ = superior appearance rating
● = good appearance rating
● = moderate appearance rating



650015 | midnight ●

pattern area shown is:
50 cm x 50 cm (large sample)
23 cm x 23 cm (small sample)



650014 | dusk ●

To discover more colourways visit
www.forbo-flooring.com/flotex-hospitality-leisure

FLORAL | LACE

pattern repeat: 200 cm x 24.7 cm



000535 | gris ●



243001 | bleu ○



243002 | taupe ○

pattern area shown is:
24.7 cm x 24.7 cm (large sample)
11.4 cm x 11.4 cm (small sample)

Using European (EN) approved testing methodology we have graded every item in the collection on its ability to 'hide' dirt or staining that occurs during normal use depending on the application.

- = superior appearance rating
● = good appearance rating
● = moderate appearance rating



LACE | TAUPE 243002

TEXTILE | PLAID



590036 | mustard



590040 | lavender



590037 | evergreen



PLAID | EVERGREEN 590037

pattern repeat: 200 cm x 50 cm



590038 | rhubarb



590039 | framboise

pattern area shown is:
50 cm x 50 cm (large sample)
23.5 cm x 23.5 cm (small sample)

Using European (EN) approved testing methodology we have graded every item in the collection on its ability to 'hide' dirt or staining that occurs during normal use depending on the application.

- = superior appearance rating
- = good appearance rating
- = moderate appearance rating

To discover more colourways visit: www.forbo-flooring.com/flotex-hospitality-leisure

TEXTILE | NEWPORT

pattern repeat: 200 cm x 100 cm



NEWPORT | TEAL 240001

pattern area shown is:
100 cm x 100 cm (large sample)
46 cm x 46 cm (small sample)

Using European (EN) approved testing methodology we have graded every item in the collection on its ability to 'hide' dirt or staining that occurs during normal use depending on the application.

- = superior appearance rating
- = good appearance rating
- = moderate appearance rating



240003 | chartreuse



240005 | indigo



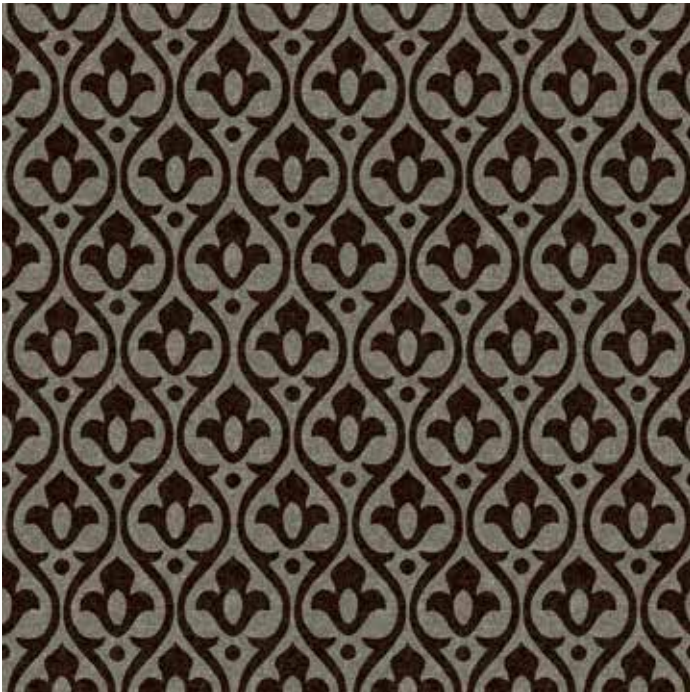
240001 | teal



240004 | sand



240002 | rust



250101 | cumin



250105 | menthe



250104 | sauge



250102 | anise

pattern area shown is:
133.3 cm x 133.3 cm (large sample)
61.5 cm x 61.5 cm (small sample)



250103 | basilic

Using European (EN) approved testing methodology we have graded every item in the collection on its ability to 'hide' dirt or staining that occurs during normal use depending on the application.

- = superior appearance rating
- = good appearance rating
- = moderate appearance rating



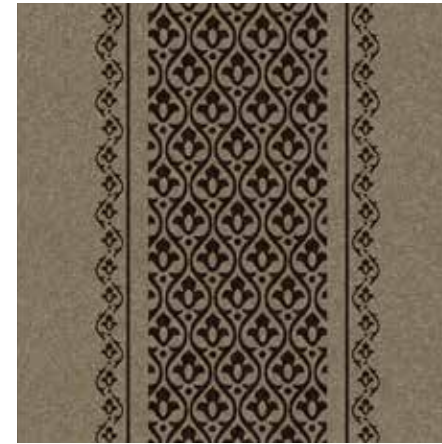
MARQUIS | CUMIN 250101



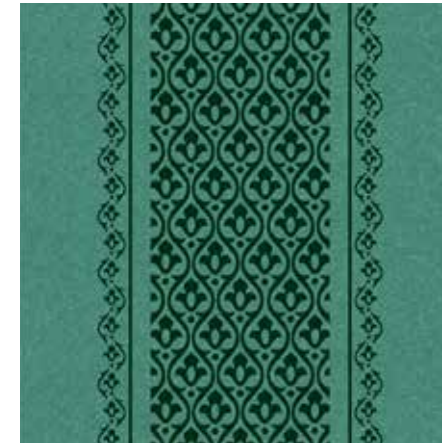
MARQUIS BORDER | CUMIN 250201

GEOMETRIC & GRAPHIC | MARQUIS BORDER

pattern repeat: 200 cm x 200 cm



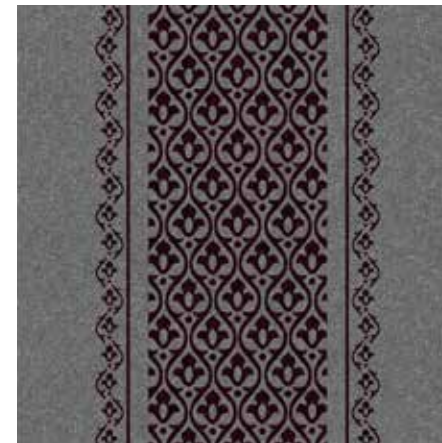
250201 | cumin



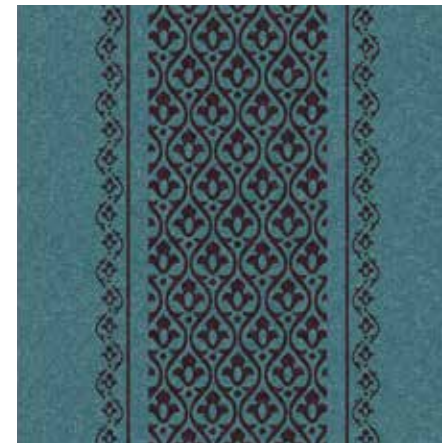
250205 | menthe



250204 | sauge



250202 | anise



250203 | basilic



pattern area shown is: 200 cm x 200 cm

○ = superior appearance rating

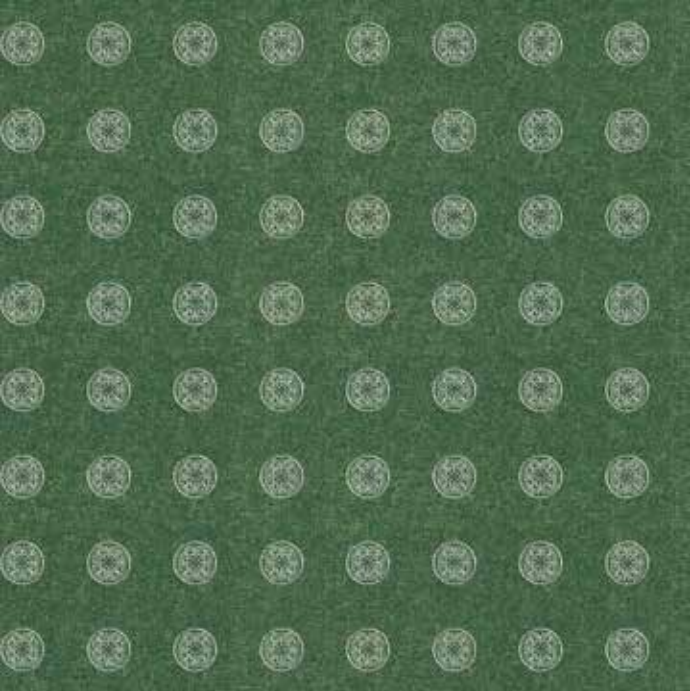
◐ = good appearance rating

● = moderate appearance rating

Using European (EN) approved testing methodology we have graded every item in the collection on its ability to 'hide' dirt or staining that occurs during normal use depending on the application.

GEOMETRIC & GRAPHIC | **CHANTILLY** | **CHANTILLY LARGE**

chantilly




251202 | poire

pattern repeat: 200 cm x 25 cm

pattern area shown is: 200 cm x 200 cm

chantilly large



251102 | poire

pattern repeat: 200 cm x 50 cm

pattern area shown is: 200 cm x 200 cm




GEOMETRIC & GRAPHIC | **CHANTILLY** | **CHANTILLY LARGE**



pattern area shown is:
200 cm x 200 cm (large sample)
92 cm x 92 cm (small sample)

Using European (EN) approved testing methodology we have graded every item in the collection on its ability to 'hide' dirt or staining that occurs during normal use depending on the application.

○ = superior appearance rating
● = good appearance rating
● = moderate appearance rating




chantilly: **251202** | poire

chantilly large: **251102** | poire

●

○

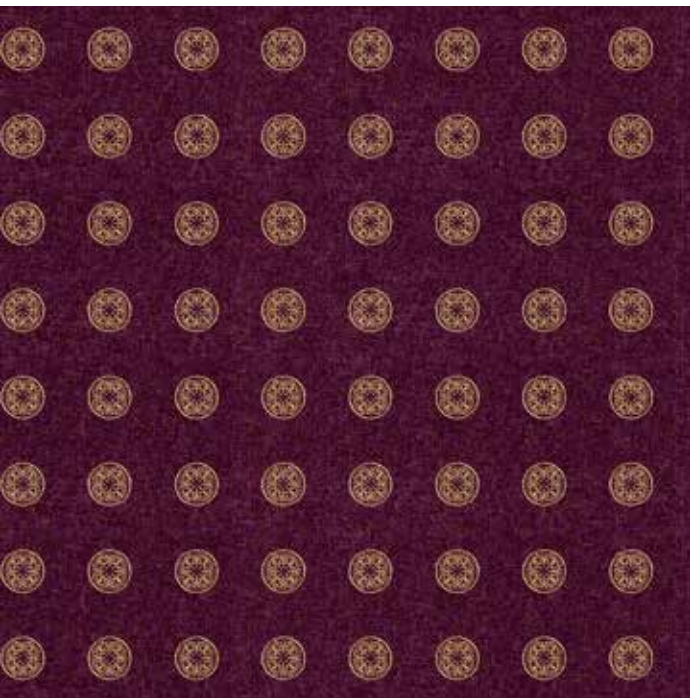


chantilly: **251201** | baie

chantilly large: **251101** | baie

○

○




chantilly: **251203** | fig

chantilly large: **251103** | fig

●

●




chantilly: **251205** | plum

chantilly large: **251105** | plum

○

○



chantilly: **251204** | coco

chantilly large: **251104** | coco

○

○



CHANTILLY BORDER | FIG 251303

GEOMETRIC & GRAPHIC | CHANTILLY BORDER

pattern repeat: 200 cm x 200 cm



251301 | baie ○



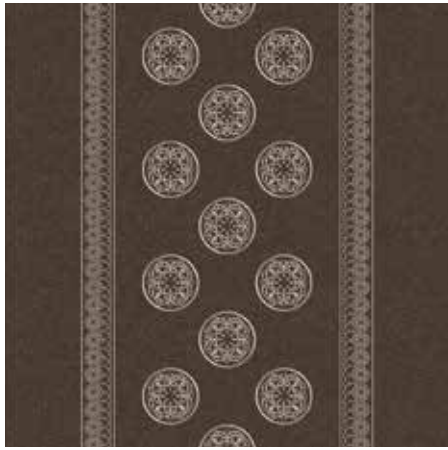
251302 | poire ●



251303 | fig ●



251305 | plum ○



251304 | coco ○

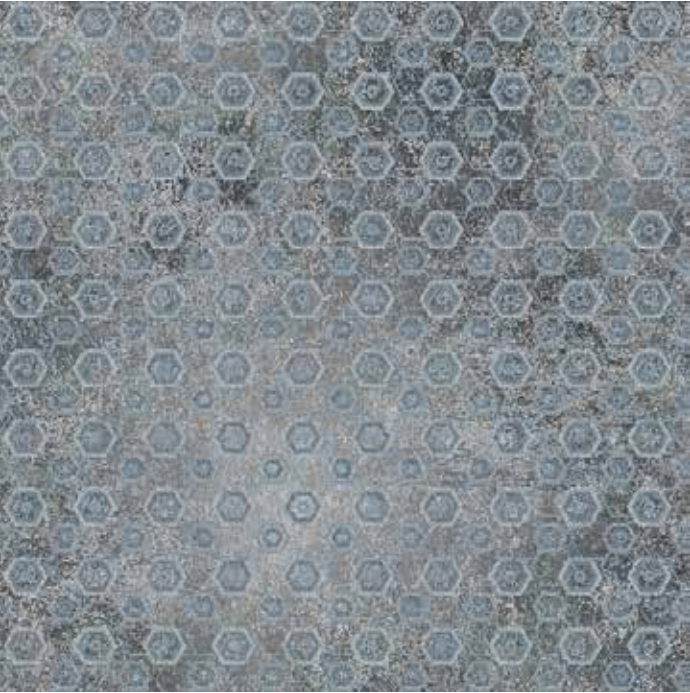
pattern area shown is: 200 cm x 200 cm

- = superior appearance rating
- = good appearance rating
- = moderate appearance rating

Using European (EN) approved testing methodology we have graded every item in the collection on its ability to 'hide' dirt or staining that occurs during normal use depending on the application.



enigma



255201 | sky

pattern area shown is: 100 cm x 100 cm

enigma large

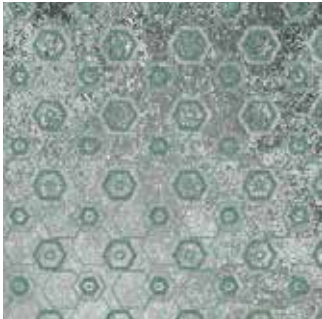


255104 | navy

pattern area shown is: 100 cm x 100 cm



enigma: 255201 | sky
enigma large: 255101 | sky



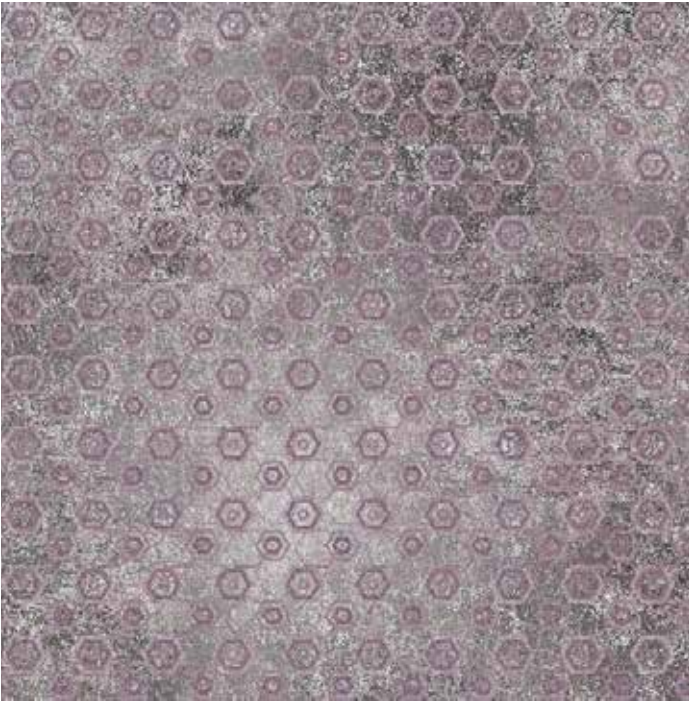
enigma: 255203 | green
enigma large: 255103 | green



enigma: 255204 | navy
enigma large: 255104 | navy



enigma: 255204 | rust
enigma large: 255104 | rust



enigma: 255202 | burgundy
enigma large: 255102 | burgundy



pattern area shown is:
100 cm x 100 cm (large sample)
45.5 cm x 45.5 cm (small sample)

Using European (EN) approved testing methodology we have graded every item in the collection on its ability to 'hide' dirt or staining that occurs during normal use depending on the application.

○ = superior appearance rating

◐ = good appearance rating

● = moderate appearance rating

ENIGMA | SKY 255201

GEOMETRIC & GRAPHIC | APOLLO BORDER

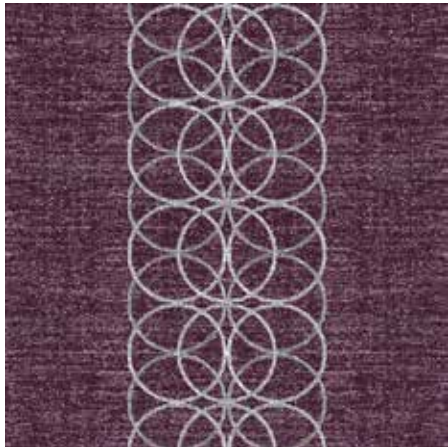
pattern repeat: 200 cm x 225 cm



244003 | jade ●



244002 | pine ●



244001 | burgundy ○

pattern area shown is: 200 cm x 200 cm

- = superior appearance rating
- = good appearance rating
- = moderate appearance rating

Using European (EN) approved testing methodology we have graded every item in the collection on its ability to 'hide' dirt or staining that occurs during normal use depending on the application.



APOLLO BORDER | BURGUNDY 244001

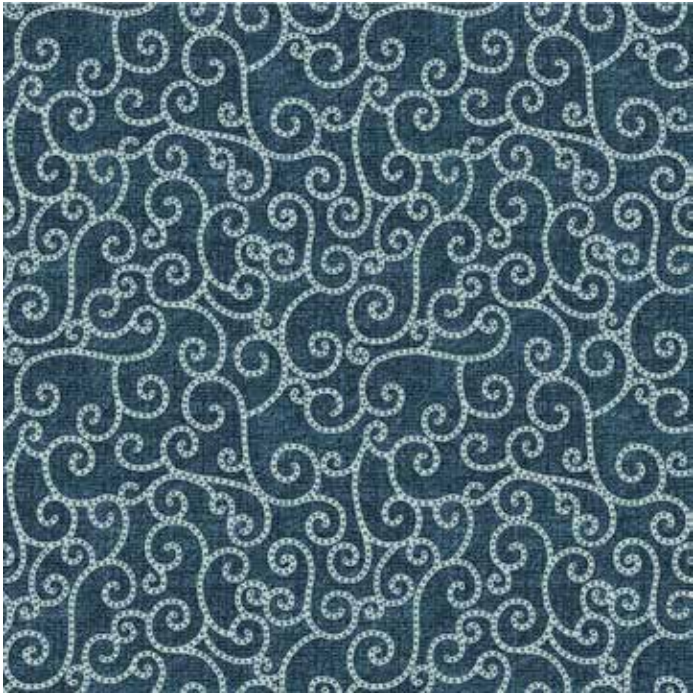


GEOMETRIC & GRAPHIC | ARABESQUE

pattern repeat: 200 cm x 25 cm



247001 | noisette ○

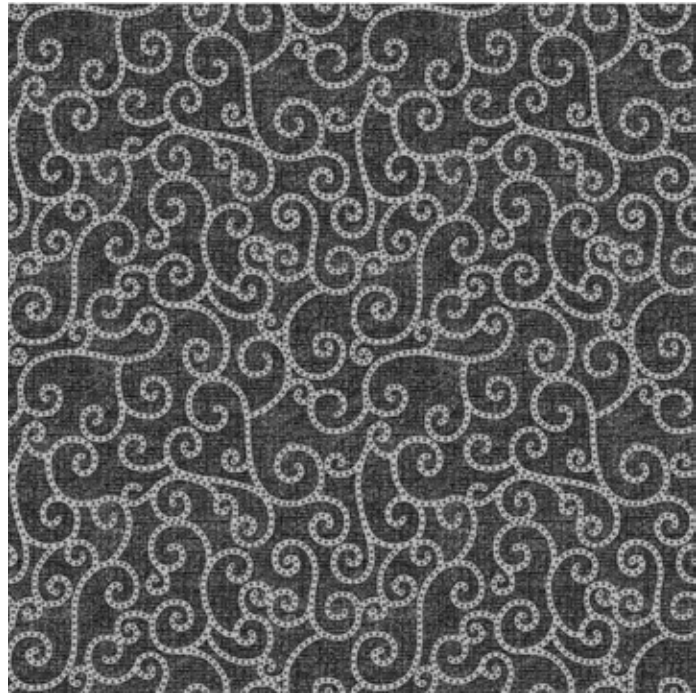


247003 | ardoise ○



247002 | grenate ○

pattern area shown is:
50 cm x 50 cm (large sample)
23.1 cm x 23.1 cm (small sample)



247004 | gris marron ○

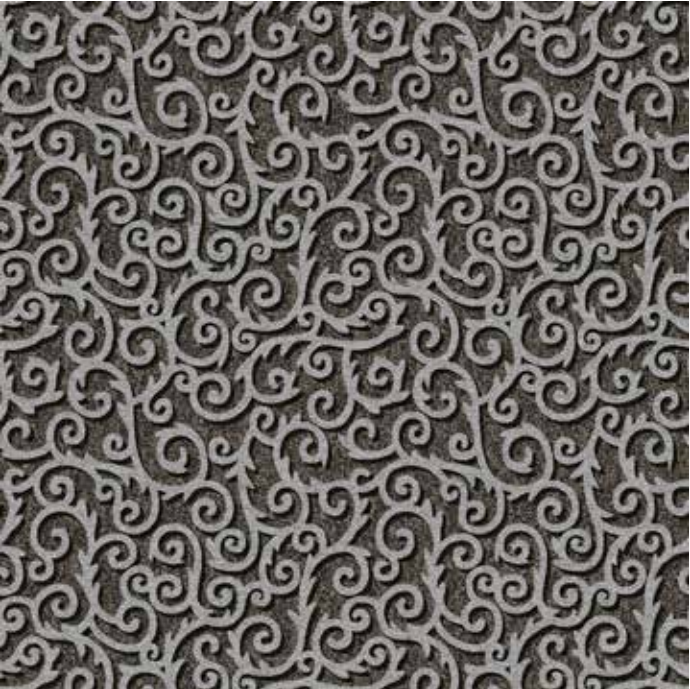
- = superior appearance rating
- = good appearance rating
- = moderate appearance rating

Using European (EN) approved testing methodology we have graded every item in the collection on its ability to 'hide' dirt or staining that occurs during normal use depending on the application.

ARABESQUE | ARDOISE 247003



trianon pattern repeat: 200 cm x 50 cm trianon large pattern repeat: 200 cm x 100 cm



252102 | kalium pattern area shown is: 100 cm x 100 cm



252202 | kalium pattern area shown is: 100 cm x 100 cm



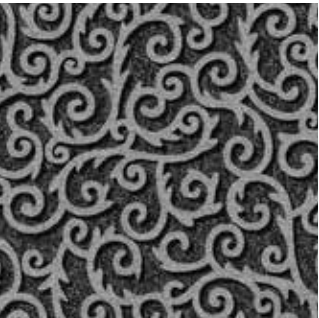
trianon: 252102 | kalium
trianon large: 252202 | kalium



trianon: 252106 | cuprum
trianon large: 252206 | cuprum



trianon: 252101 | zincun
trianon large: 252201 | zincun



trianon: 252107 | ferrum
trianon large: 252207 | ferrum

pattern area shown is:
100 cm x 100 cm (large sample)
46 cm x 46 cm (small sample)

Using European (EN) approved testing methodology we have graded every item in the collection on its ability to 'hide' dirt or staining that occurs during normal use depending on the application.

- = superior appearance rating
- = good appearance rating
- = moderate appearance rating



trianon: 252105 | titan
trianon large: 252205 | titan



trianon: 252104 | aurum
trianon large: 252204 | aurum



trianon: 252103 | natrium
trianon large: 252203 | natrium

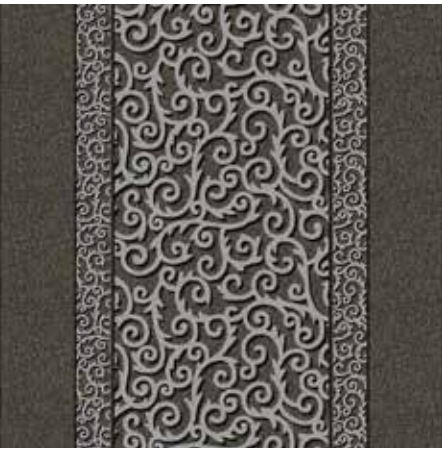


TRIANON | NATRIUM 252103



GEOMETRIC & GRAPHIC | TRIANON BORDER

pattern repeat: 200 cm x 200 cm



252302 | kalium ○



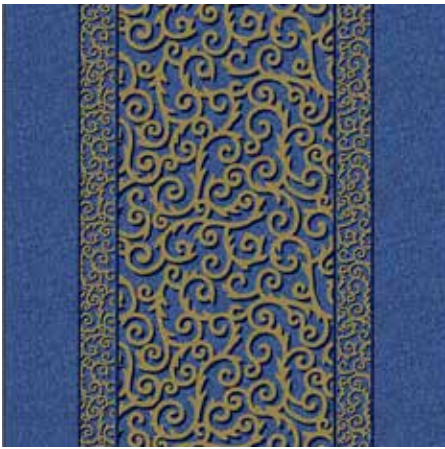
252305 | titan ●



252306 | cuprum ●



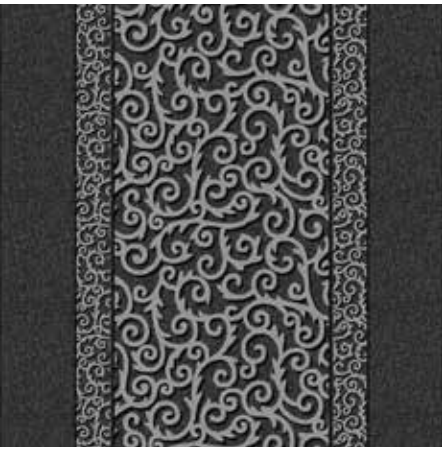
252301 | zincun ●



252304 | aurum ●



252303 | natrium ●



252307 | ferrum ●

pattern area shown is: 200 cm x 200 cm

- = superior appearance rating
- = good appearance rating
- = moderate appearance rating

Using European (EN) approved testing methodology we have graded every item in the collection on its ability to 'hide' dirt or staining that occurs during normal use depending on the application.

GEOMETRIC & GRAPHIC | HERITAGE

pattern repeat: 200 cm x 200 cm



pattern area shown is:
100 cm x 100 cm (large sample)
45.8 cm x 45.8 cm (small sample)

Using European (EN) approved testing methodology we have graded every item in the collection on its ability to 'hide' dirt or staining that occurs during normal use depending on the application.

- = superior appearance rating
- = good appearance rating
- = moderate appearance rating



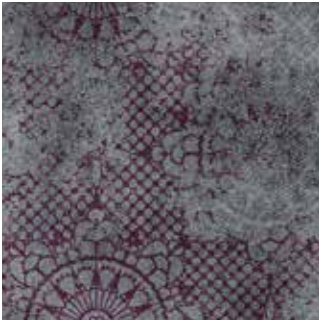
230004 | faded grey ○



230003 | faded sapphire ●



230001 | faded turquoise ●



230005 | faded grenat ○

GEOMETRIC & GRAPHIC | JAIPUR

pattern repeat: 200 cm x 259.2 cm



245002 | smoked quartz ○



245001 | verdigris ○



245003 | blue john ○

pattern area shown is:
200 cm x 200 cm (large sample)
92 cm x 92 cm (small sample)

Using European (EN) approved testing methodology we have graded every item in the collection on its ability to 'hide' dirt or staining that occurs during normal use depending on the application.

- = superior appearance rating
- = good appearance rating
- = moderate appearance rating



JAIPUR | SMOKED QUARTZ 245002



STATEMENT | ROCKEFELLER



ROCKEFELLER | MOONSTONE 261104



261104 | moonstone ○



261106 | amethyst ●



261101 | lapis lazuli ●

pattern repeat: 200 cm x 50 cm

pattern area shown is:
200 cm x 200 cm (large sample)
92 cm x 92 cm (small sample)

Using European (EN) approved testing methodology we have graded every item in the collection on its ability to 'hide' dirt or staining that occurs during normal use depending on the application.

- = superior appearance rating
- = good appearance rating
- = moderate appearance rating



261105 | topaz ●



261102 | sapphire ○



261103 | peridot ●

STATEMENT | CHRYSLER

pattern repeat: 200 cm x 147.5 cm



261405 | topaz ●



261406 | amethyst ●



261401 | lapis lazuli ●



261404 | moonstone ○

Using European (EN) approved testing methodology we have graded every item in the collection on its ability to 'hide' dirt or staining that occurs during normal use depending on the application.

- = superior appearance rating
- = good appearance rating
- = moderate appearance rating



261402 | sapphire ○

pattern area shown is:
200 cm x 200 cm (large sample)
92.5 cm x 92.5 cm (small sample)



261403 | peridot ●



CHRYSLER | SAPPHIRE 261402

STATEMENT | EMPIRE

pattern repeat: 200 cm x 178 cm



261205 | topaz



261204 | moonstone

pattern area shown is:
178 cm x 178 cm (large sample)
82 cm x 82 cm (small sample)

Using European (EN) approved testing methodology we have graded every item in the collection on its ability to 'hide' dirt or staining that occurs during normal use depending on the application.

○ = superior appearance rating
● = good appearance rating
● = moderate appearance rating



EMPIRE | TOPAZ 261205



261206 | amethyst



261201 | lapis lazuli



261202 | sapphire



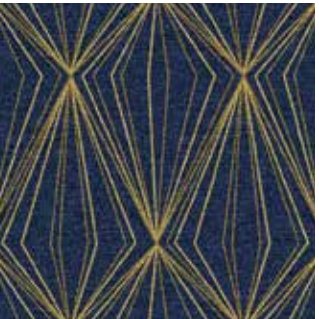
261203 | peridot

STATEMENT | GRAND REX

pattern repeat: 200 cm x 73.76 cm



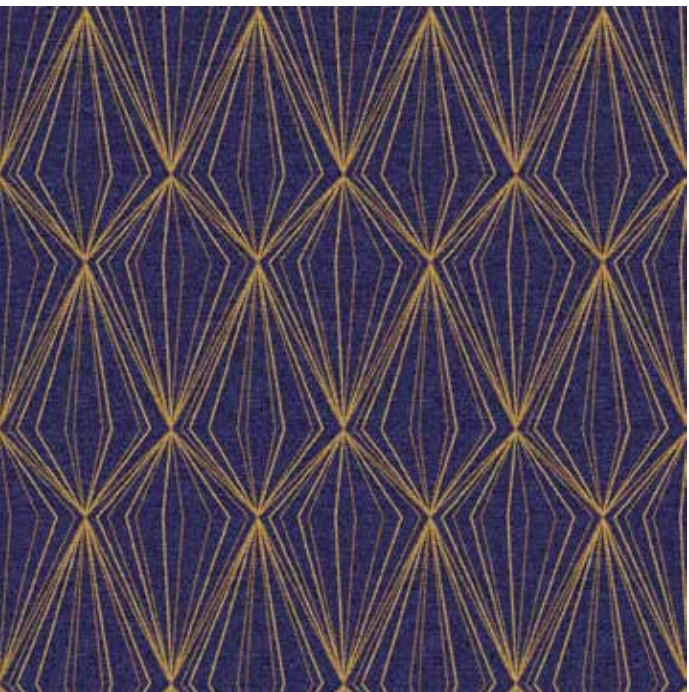
GRAND REX | AMETHYST 261306



261301 | lapis lazuli



261304 | moonstone



261306 | amethyst



261305 | topaz



261302 | sapphire



261303 | peridot

pattern area shown is:
200 cm x 200 cm (large sample)
92 cm x 92 cm (small sample)

Using European (EN) approved testing methodology we have graded every item in the collection on its ability to 'hide' dirt or staining that occurs during normal use depending on the application.

○ = superior appearance rating
● = good appearance rating
● = moderate appearance rating



260104 | kingfisher



260105 | mauve



260101 | indigo



260103 | terracotta



260102 | oxide

pattern area shown is:
200 cm x 200 cm (large sample)
92 cm x 92 cm (small sample)

Using European (EN) approved testing methodology we have graded every item in the collection on its ability to 'hide' dirt or staining that occurs during normal use depending on the application.

○ = superior appearance rating
● = good appearance rating
● = moderate appearance rating



260204 | kingfisher



260205 | mauve

pattern area shown is:
200 cm x 200 cm (large sample)
92 cm x 92 cm (small sample)



260201 | indigo



260203 | terracotta



260202 | oxide



PETIT PALAIS | INDIGO 260201

Using European (EN) approved testing methodology we have graded every item in the collection on its ability to 'hide' dirt or staining that occurs during normal use depending on the application.

○ = superior appearance rating
● = good appearance rating
● = moderate appearance rating

STATEMENT | CANOPY

pattern repeat: 200 cm x 298.4 cm



260404 | kingfisher ●



260405 | mauve ○



260401 | indigo ○



CANOPY | INDIGO 260401



260403 | terracotta ●



260402 | oxide ○

pattern area shown is:
200 cm x 200 cm (large sample)
91.5 cm x 91.5 cm (small sample)

Using European (EN) approved testing methodology we have graded every item in the collection on its ability to 'hide' dirt or staining that occurs during normal use depending on the application.

- = superior appearance rating
- = good appearance rating
- = moderate appearance rating

STATEMENT | FLOURISH

pattern repeat: 200 cm x 298.4 cm



BORDER: FLOURISH | OXIDE 260302 | PETIT PALAIS | OXIDE 260202

pattern area shown is:
200 cm x 200 cm (large sample)
200 cm x 200 cm (small sample)

Using European (EN) approved testing methodology we have graded every item in the collection on its ability to 'hide' dirt or staining that occurs during normal use depending on the application.

- = superior appearance rating
- = good appearance rating
- = moderate appearance rating



260302 | oxide ○



260304 | kingfisher ●



260303 | terracotta ●



260301 | indigo ○



260305 | mauve ○

STATEMENT | NATURAL HAVEN



264102 | lagoon



264101 | coral



264103 | dune



NATURAL HAVEN | CORAL 264101

pattern repeat: 200 cm x 400.1 cm

pattern area shown is: 200 cm x 200 cm

This item has a long pattern repeat in the length. Please make sure you take this into account when calculating the quantity required for your installation.

Using European (EN) approved testing methodology we have graded every item in the collection on its ability to 'hide' dirt or staining that occurs during normal use depending on the application.

- = superior appearance rating
- = good appearance rating
- = moderate appearance rating

STATEMENT | NATURAL BLEND

pattern repeat: 200 cm x 223.3 cm



NATURAL BLEND | DUNE 264403



264402 | lagoon



264401 | coral



264403 | dune

for installation purpose plank size is: 22.3 cm
pattern area shown is: 200 cm x 200 cm

STATEMENT | NATURAL PATINA

pattern repeat: 200 cm x 400.1 cm



264201 | coral



264202 | lagoon



264203 | dune

pattern area shown is:
200 cm x 200 cm (large sample)
91.2 cm x 91.2 cm (small sample)

This item has a long pattern repeat in the length. Please make sure you take this into account when calculating the quantity required for your installation.

Using European (EN) approved testing methodology we have graded every item in the collection on its ability to 'hide' dirt or staining that occurs during normal use depending on the application.

- = superior appearance rating
- = good appearance rating
- = moderate appearance rating

STATEMENT | NATURAL BLOOM

pattern repeat: 200 cm x 400.1 cm



264303 | dune



264302 | lagoon



264301 | coral

pattern area shown is:
200 cm x 200 cm (large sample)
91.4 cm x 91.4 cm (small sample)

This item has a long pattern repeat in the length. Please make sure you take this into account when calculating the quantity required for your installation.

Using European (EN) approved testing methodology we have graded every item in the collection on its ability to 'hide' dirt or staining that occurs during normal use depending on the application.

- = superior appearance rating
- = good appearance rating
- = moderate appearance rating

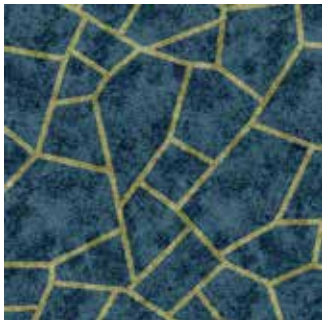


STATEMENT | RED ROCK

pattern repeat: 200 cm x 200 cm



RED ROCK | BLACK JACK 262401



262403 | baccarat

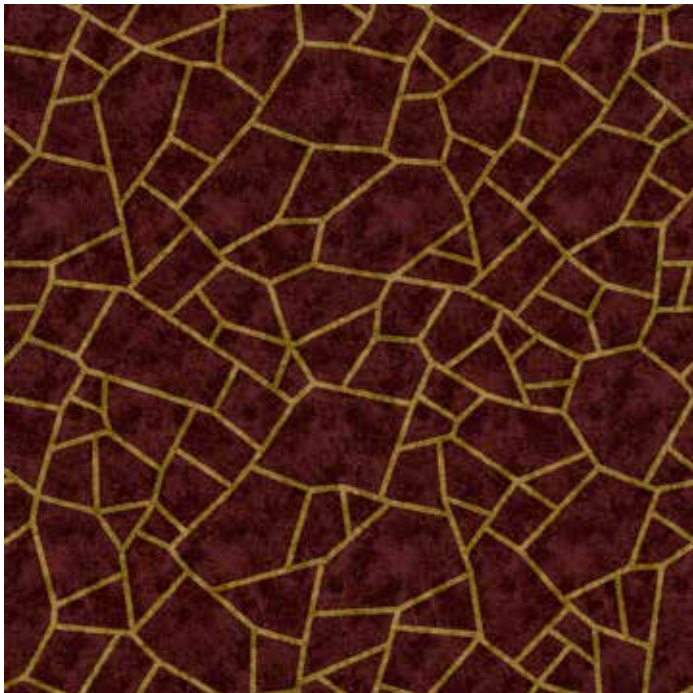
pattern area shown is:
200 cm x 200 cm (large sample)
92 cm x 92 cm (small sample)

Using European (EN) approved testing methodology we have graded every item in the collection on its ability to 'hide' dirt or staining that occurs during normal use depending on the application.

- = superior appearance rating
- = good appearance rating
- = moderate appearance rating



262401 | black jack



262402 | red roulette

STATEMENT | MANDALA

pattern repeat: 200 cm x 198 cm



262103 | baccarat



262102 | red roulette



262101 | black jack

pattern area shown is:
198 cm x 198 cm (large sample)
91.6 cm x 91.6 cm (small sample)

Using European (EN) approved testing methodology we have graded every item in the collection on its ability to 'hide' dirt or staining that occurs during normal use depending on the application.

- = superior appearance rating
- = good appearance rating
- = moderate appearance rating



MANDALA | BACCARAT 262103



BELLAGIO | RED ROULETTE 262202



262203 | baccarat ○



262201 | black jack ○

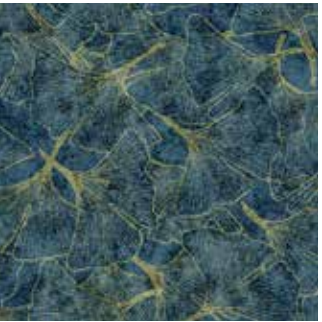


262202 | red roulette ○

pattern area shown is:
200 cm x 200 cm (large sample)
91.6 cm x 91.6 cm (small sample)

Using European (EN) approved testing methodology we have graded every item in the collection on its ability to 'hide' dirt or staining that occurs during normal use depending on the application.

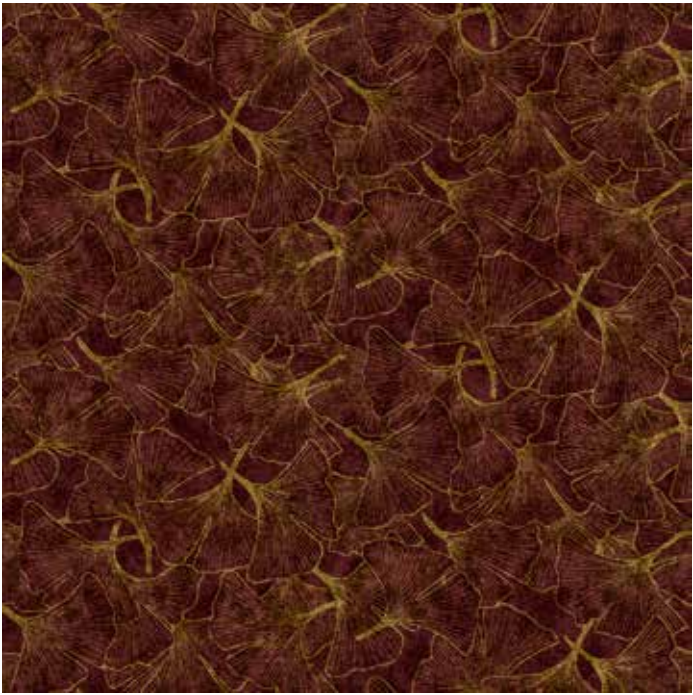
- = superior appearance rating
- = good appearance rating
- = moderate appearance rating



262303 | baccarat ○



262301 | black jack ○



262302 | red roulette ○

pattern area shown is:
200 cm x 200 cm (large sample)
92 cm x 92 cm (small sample)

Using European (EN) approved testing methodology we have graded every item in the collection on its ability to 'hide' dirt or staining that occurs during normal use depending on the application.

- = superior appearance rating
- = good appearance rating
- = moderate appearance rating



VENETIAN | BACCARAT 262303

STATEMENT | **TRIBECA**

pattern repeat: 200 cm x 99.7 cm



263302 | brownstone ○



263301 | hudson ○



263303 | broadway ○

pattern area shown is:
200 cm x 199.4 cm (large sample)
91.5 cm x 91.5 cm (small sample)

Using European (EN) approved testing methodology we have graded every item in the collection on its ability to 'hide' dirt or staining that occurs during normal use depending on the application.

○ = superior appearance rating
● = good appearance rating
● = moderate appearance rating

STATEMENT | **GREENWICH**

pattern repeat: 200 cm x 200 cm



263102 | brownstone ○



263103 | broadway ○



263101 | hudson ○

pattern area shown is:
200 cm x 200 cm (large sample)
92 cm x 92 cm (small sample)

Using European (EN) approved testing methodology we have graded every item in the collection on its ability to 'hide' dirt or staining that occurs during normal use depending on the application.

○ = superior appearance rating
● = good appearance rating
● = moderate appearance rating



STATEMENT | SOHO

pattern repeat: 200 cm x 100 cm



263401 | hudson



263403 | broadway

○



263402 | brownstone

○

pattern area shown is:
200 cm x 200 cm (large sample)
92 cm x 92 cm (small sample)

Using European (EN) approved testing methodology we have graded every item in the collection on its ability to 'hide' dirt or staining that occurs during normal use depending on the application.

- = superior appearance rating
- = good appearance rating
- = moderate appearance rating



SOHO | HUDSON 263401

STATEMENT | CHELSEA

pattern repeat: 200 cm x 152.6 cm



CHELSEA | BROADWAY 263203



263202 | brownstone

○



263201 | hudson

○



263203 | broadway

○

pattern area shown is:
152.6 cm x 152.6 cm (large sample)
70 cm x 70 cm (small sample)

Using European (EN) approved testing methodology we have graded every item in the collection on its ability to 'hide' dirt or staining that occurs during normal use depending on the application.

- = superior appearance rating
- = good appearance rating
- = moderate appearance rating

FLOTEX, THE HIGH TECH
 TEXTILE FLOORING

Flotex is different from other textile floor coverings due to its unique construction. By combining a high density flocked surface with a heavy duty resilient foundation Flotex offers the best of both worlds.

DURABLE & COMFORTABLE

Discover the toughness and durability of Flotex which comes as a result of up to 80 million nylon 6.6 fibres per square metre. Additionally these fibres offer the experience of quietness and comfort normally only associated with carpet. Flotex offers an excellent slip resistance and is water-washable. Flotex has a low roll resistance so it is easy to use in Hospitality and Leisure. Its durable construction means the fibres will return to their original position and the floor remains as new.

Flotex is guaranteed for 10 years and can also benefit from a guarantee extension of 2 years if it is installed in conjunction with Forbo Entrance Systems.

QUIET & IMPROVED INDOOR AIR QUALITY

The surface pile does not only perform in acoustics (21dB impact sound reduction) and underfoot comfort, it also captures fine dust and allergens from the air, retaining them until cleaning where they are then effortlessly released with regular vacuuming. This helps to improve indoor air quality, creating better environments for your visitors.



FLOTEX

The 80 million straight nylon fibres that are electrostatically flocked into the backing capture fine dust and allergens. The unique structure ensures these can be released when vacuumed. That is why Flotex is the only textile flooring with a British Allergy Foundation approval.

CARPET

Loop pile carpet or loose nylon cut pile fibres retain fine dust and allergens, however, they're not easily released due to the complex nature of the surface pile, resulting in bacterial growth and an unhygienic floor.



Technical specifications

Flotex sheet meets the requirements of EN 1307

Flotex vision sheet		
	Total thickness	ISO 1765 4.3 mm
	Total weight	ISO 8543 1800g/m²
	Commercial use	EN ISO 10874 Class 33
Pile composition		100% polyamide 6,6
	Sheet roll width	2.0 m
	Sheet roll length	± 30 m
	Dimension stability	ISO 2551 ≤ 0.2 %
	Slip resistance	UK SRG pendulum Dry - very low slip risk Wet - low slip risk
	Acoustical impact noise reduction	EN-ISO 717-2 ΔL _w ≥ 21 dB
	Acoustical sound absorption	ISO 354 α _w = 0,10 (H)
	Castor chair continuous use	ISO 4918 r ≥ 2.4
	Colour fastness to light	EN ISO 105-B02 ≥ 5
	Indoor air emissions: TVOC after 28 days	EN 16516 ≤ 0,1 mg/ m³
	Abrasion resistance	EN 1307 annex F > 1000 cycles
	Water impermeability	EN 1307 annex G Pass
	Creating better Environments	
	Renewable electricity	Flotex is manufactured using 100% electricity made from renewable sources.
	Recycled content	Flotex sheet contains up to 20% recycled content by weight.
	Indoor air quality	Flotex is approved by Allergy UK. All Flotex products are tested for indoor air emissions in accordance with EN16516 after 3 days and 28 days. Flotex sheet has ultra low emissions.
	LCA	Life Cycle Assessment is the foundation for securing the lowest environmental impact
Flotex meets the requirements of EN 14041		EN 14041 1200301-DoP-107
	Reaction to fire	EN 13501-1 B _{f1} s1, L, CS
	Slip resistance	EN 13893 μ ≥ 0.30
	Thermal conductivity	EN 12524 0.06 W/mK
	Body voltage	ISO 6356 ≤ 2.0 kV

Our recommended adhesive for our collection for Flotex Sheet is 640 Eurostar Special. Please contact customer services for more information. All Forbo Flooring Systems' sales organisations worldwide have a certified Quality Management System in accordance with ISO 9001. All Forbo Flooring Systems' manufacturing operations have a certified Environmental Management System in accordance with ISO 14001. The Life Cycle Assessment (LCA) of Forbo Flooring Systems' products is documented in individual Environmental Product Declarations (EPD's) which can be found on all of our websites.



creating better environments



