

Forbo Flooring Systems is part of the Forbo Group, a global leader in flooring, bonding and movement systems, and offers a full range of flooring products for both commercial and residential markets. High quality linoleum, vinyl, textile, flocked and entrance flooring products combine functionality, colour and design, offering you total flooring solutions for any environment.



OMA Architecture



# Project vinyl

eternal

**UK**

Forbo Flooring UK Limited  
P.O. Box 1, Kirkcaldy, Fife KY1 2SB

**London EC1 showroom**

79 St John Street, Clerkenwell  
London EC1M 4NR  
Tel: 0207 553 9300

**For commercial enquiries:**

If calling from the North,  
Midlands, London & South East  
Tel: 0800 0282 162  
Fax: 01772 646 912

If calling from Scotland & South West

Tel: 0800 0935 258  
Fax: 01592 643 999

**Nuway enquiries:**

Tel: 01773 740 688  
Fax: 01773 740 640

**Residential enquiries:**

Tel: 0800 0935 846  
Fax: 01592 643 999

Email: [info.flooring.uk@forbo.com](mailto:info.flooring.uk@forbo.com)  
[www.forbo-flooring.co.uk](http://www.forbo-flooring.co.uk)

**Samples:**

**Tel: 0800 731 2369**

**Ireland**

Forbo Flooring UK Ltd.  
2 Deansgrange Business Park  
Blackrock  
Co Dublin

Tel: 00353 1 2898 898  
Fax: 00353 1 2898 177  
E-mail: [info.ireland@forbo.com](mailto:info.ireland@forbo.com)  
[www.forbo-flooring.ie](http://www.forbo-flooring.ie)

**Registered office:**

Forbo Flooring UK Limited  
Den Road, Kirkcaldy  
Fife KY1 2ER  
Registered in Scotland: No 41400



FLOORING SYSTEMS

128673/010411 BRETERNAL11

creating better environments

creating better environments



FLOORING SYSTEMS

# ETERNAL PROJECT VINYL; EXTRAORDINARY DESIGN & EXCEPTIONAL PERFORMANCE



## Distinctive in every application

More than ever before, when you turn to the new Forbo Eternal general purpose vinyl collection you'll discover a superb combination of state of the art designs in a strong, durable, fit-for-purpose range – whatever your application.

The collection presents a balanced range of wood, stone and abstract designs, alongside a comprehensive, modern colour palette sure to complement your interior designs. When you're looking for a flooring solution, you'll find the Eternal collection offers you balance between looks and performance. Whether you're an architect or interior designer looking for a distinctive design, or a facilities manager or contractor seeking a functional solution, the design elements of the Eternal collection can be blended together to achieve the perfect end result.

### Authenticity

For the new Eternal collection, Forbo's design team has developed convincing, authentic visuals with a unique identity and a natural feel. Eternal's high tech PVC wear layer and PUR Pearl finish are key to the collection's ability to keep its "as new" appearance even after years of intensive use.

### A well known brand

The Forbo Flooring Eternal brand has become synonymous with assured and guaranteed quality. The brand's performance benefits are clearly recognisable in many installations worldwide.

### A balanced collection

Extraordinary design and exceptional performance – it's a promise fulfilled across every area of the collection:

- Functionality which goes hand in hand with visual appeal
- Accessible design that's easy to apply
- Wide colour ranges, from soft tones to accent colours – and everything in between
- Outstanding performance in every way
- Mix and match together with current popular interior finishes

### Contents:

- 3 Introduction
- 4 Collection benefits
- 6 Eternal wood
- 10 Eternal concrete
- 12 Eternal stone
- 13 Eternal slate
- 14 Eternal smaragd
- 16 Eternal marble

- 18 Eternal sand
- 20 Eternal weave
- 22 Eternal metal
- 24 Eternal palette
- 28 Eternal contrast
- 30 Product characteristics
- 32 Forbo Flooring Collections
- 34 Forbo FloorCare method
- 35 Technical specifications





# Designer quality sheet vinyl

**Choose Eternal and you benefit from far more than simply a wide choice of designs.**

The Eternal collection was created in a process that began with intensive trend analysis and finishes with your creative use of our material. Colour options in every range are designed to offer a distinctive and practical palette.

The authentic designs achieve realism by adding a three dimensional texture, giving you an attractive flooring with a natural feel while the 'scattered' look featured in Eternal palette, contrast, stone and smaragd makes these designs suitable for any scale of application.

### Extensive range

In the new Eternal collection you'll discover visuals and structures designed specifically to help you create balanced interiors.

The collection introduces an even wider wood range than previously featured; 20 items ranging from traditional to modern woods. The Eternal Stone collection has also been extended adding visual effects, including concrete and slate, to existing marble and smaragd designs. New in the collection are textile, sand and metal designs, and the whole collection is complemented by a spectacular array of trend colours.

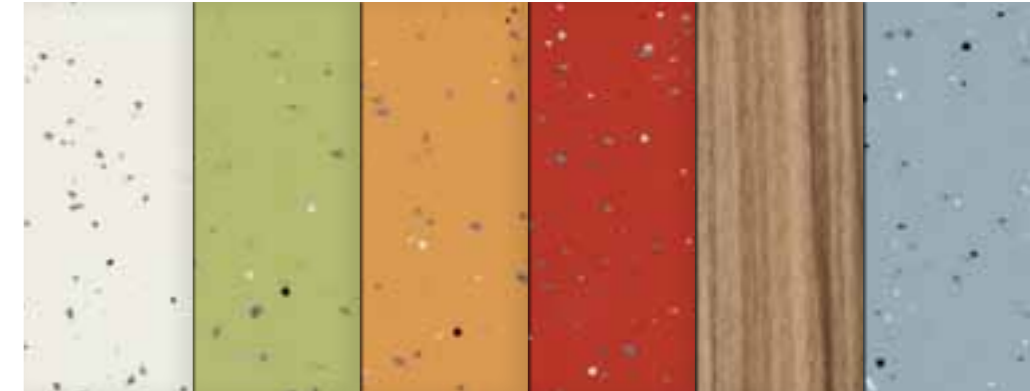
In short, this new Eternal collection mixes proven with contemporary designs to offer its own unique pattern and colour signature for use in heavy commercial application areas whilst also providing an R10 slip rating.

## Balance wherever you want it

From the spills and tumbles of a nursery through to the large scale thoroughfares in a modern university, there is a common need for attractive, functional products. Eternal has the performance and product properties to satisfy such a diverse range of needs.

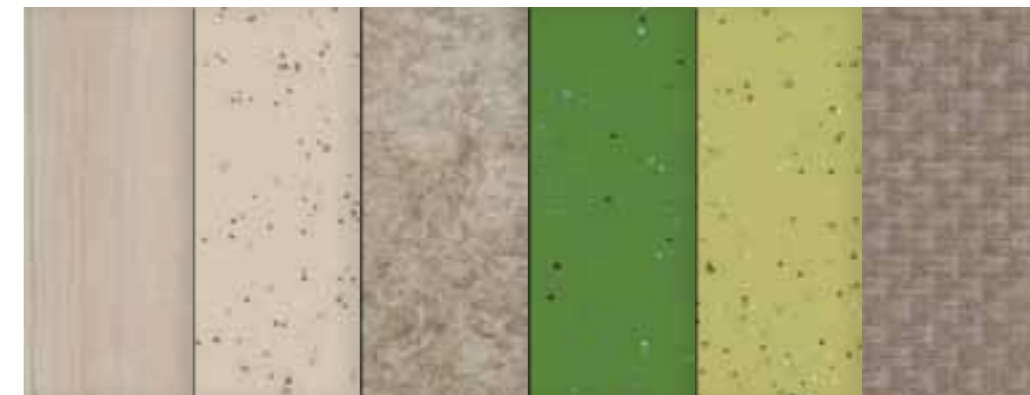
### Education

Bright, stimulating colours contribute to good learning environments. While contrasting colours can help designate different parts of the classroom, libraries or study halls.



### Healthcare

A healing environment needs appealing flooring that adapts to its surroundings. The caring and soothing characteristics of healthcare interiors were kept in mind during the design process and Eternal's PUR Pearl easy-to-clean, stain resistant low maintenance surface fits the demanding cleaning regime essential in this segment.



### Retail, leisure and hospitality

All application areas here benefit from a flooring solution with an identity. The floor can be used to communicate branding or maybe zoning within the location.



### Offices

Today offices feature a more relaxed and welcoming feel, to create equilibrium between thought and inspiration. The Eternal range excels in helping you achieve this. By mixing and matching, it enables you to create balanced zoning with functional and aesthetic flooring especially in more practical areas.



# eternal wood

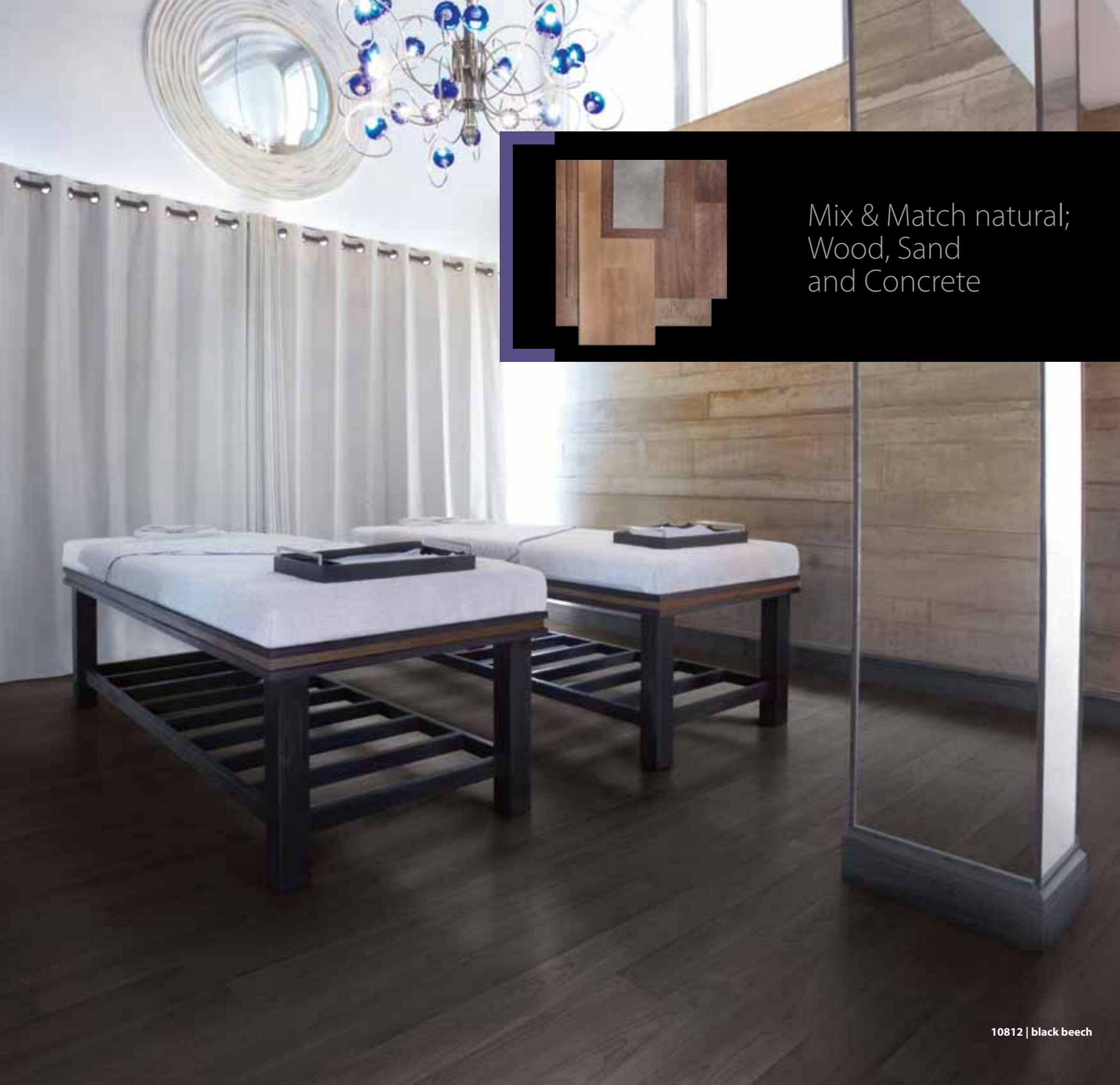
A group of traditional woods in realistic colours with smooth graining and medium width board designs.  
Authentic woods with a natural character like Oak and Pine, with medium to wide plank designs.  
Contemporary woods with a modern appearance, in fresh light and intense dark colours.  
Abstract woods creating designs which reflect modern trends.



6







Mix & Match natural;  
Wood, Sand  
and Concrete

180cm  
20cm



10542 | grey oak

180cm  
10cm



10252 | white birch

180cm  
12,5cm



10732 | neutral wengé



11382 | anthracite stripe

180cm  
25cm



11732 | warm zebrano

180cm  
25cm



10382 | silver chestnut

180cm  
20cm



11882 | smoked oak

180cm  
12,5cm

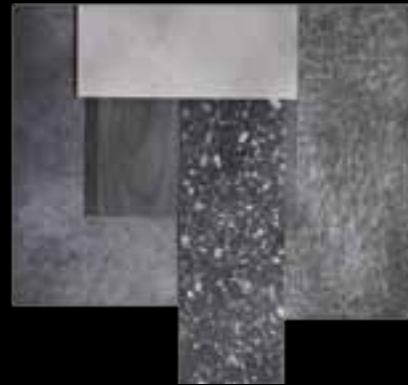


10812 | black beech

10812 | black beech

# eternal concrete

A contemporary concrete with a subtle satin look in four natural warm and four neutral grey tones.



Mix & Match industrial;  
Wood, Metal and Concrete



13022 | beton



13012 | neutral



13022 | beton



13082 | gravel



13032 | anthracite



13072 | umber



13062 | silt



13052 | mud



13042 | dune



# eternal stone

Colours inspired by natural stones, from warm to cool, from light to dark. A fine sparkle in the wear layer gives this design depth and a natural finish.



12022 | chalk



12042 | granite



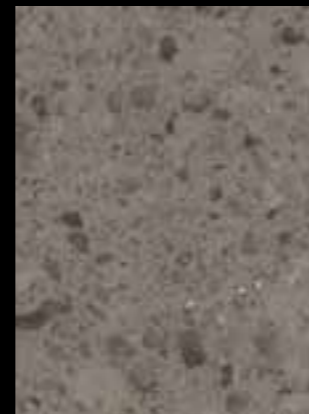
12262 | mineral



12292 | pebble



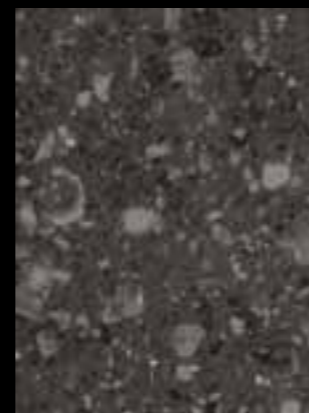
12272 | cobble



12012 | quartz



12282 | flint



12032 | coal



12042 | granite

# eternal slate

A genuine slate look with pattern and surface texture realised by the lively slate embossing, in three dark classic colours.



13582 | silver



13572 | navy



13562 | black

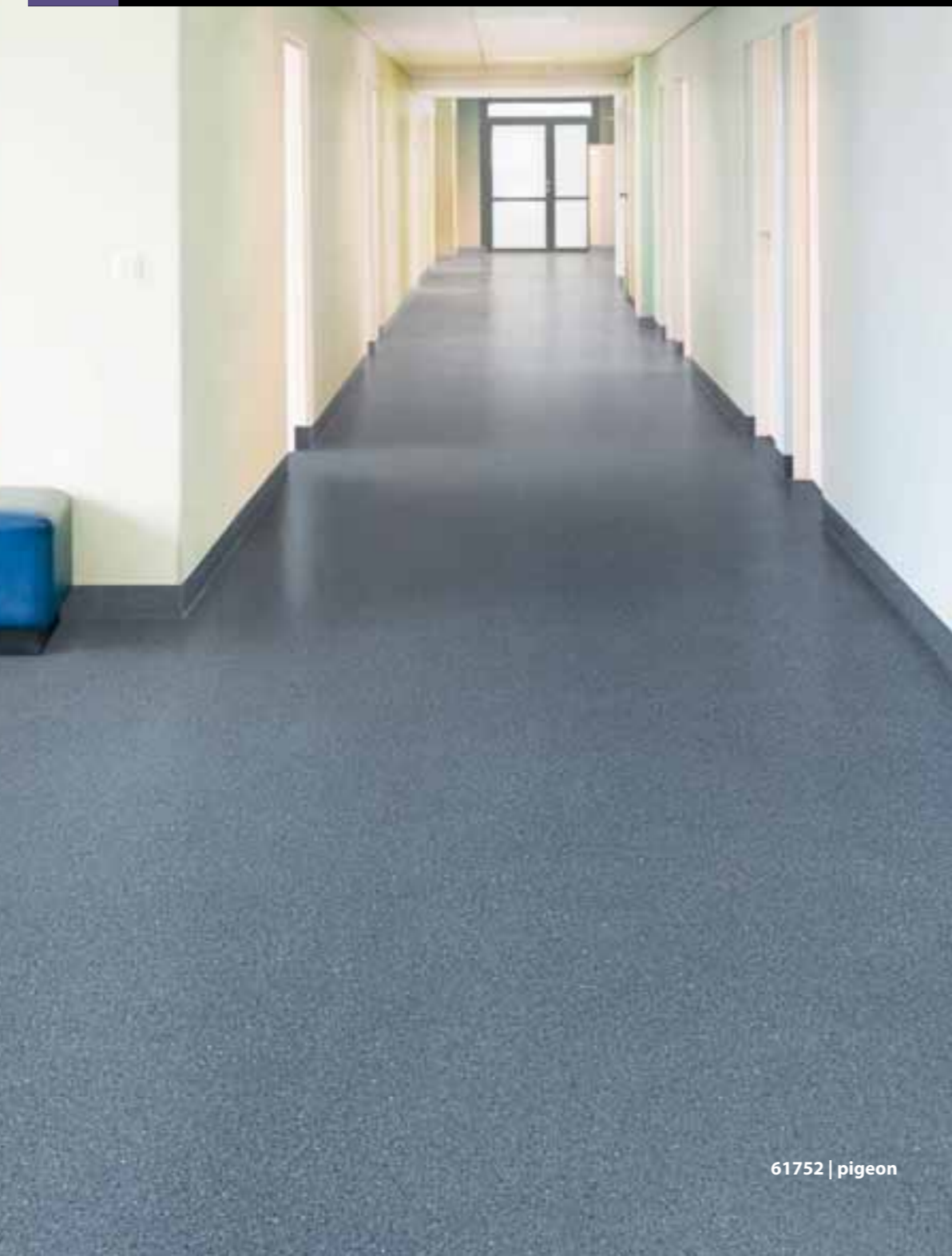


13582 | silver



# eternal smaragd

The timeless, salt & pepper look of smaragd is a neutral, easy to combine range of 12 colours. The design helps to conceal soiling ensuring the floor retains its appearance for longer.



61752 | pigeon

Mix & Match traditional;  
Wood, Stone, Slate  
and Smaragd



61012 | cream



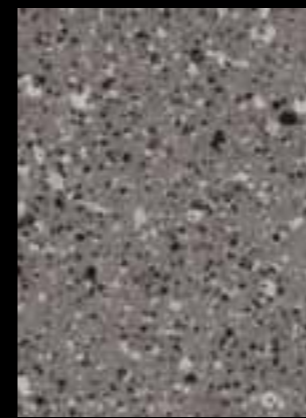
61042 | mist



61512 | rose



66142 | dust



61962 | grey



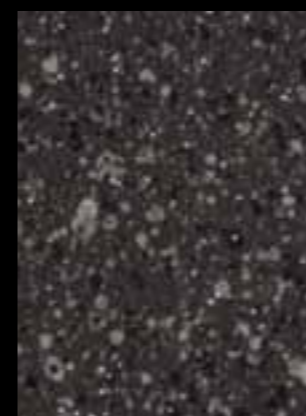
61922 | frost



61832 | herb



61302 | ochre



61032 | nero



61752 | pigeon



61222 | greige



61342 | peach



# eternal marble



A neutral marble inspired design adding appeal to the surroundings in a practical way, in eight matching colours.



64002 | feather



64032 | cloud



64122 | sahara



64822 | moss



64092 | leather



64932 | dove



64362 | camel



64972 | ash



64122 | sahara





**eternal** sand

A subtle all-over design with a natural look in eight stylish colours, with a matching satin finish.



Mix & Match Elegant;  
Wood, Weave  
and Sand

13862 | teal



13822 | smoke



13842 | cork



13852 | soil



13872 | terra



13892 | aubergine



13882 | sepia



13862 | teal



13832 | linen



# eternal weave

A soft textured, textile look with in-depth, muted colours and a satin finish.



13662 | indigo



13622 | graphite



13652 | iron

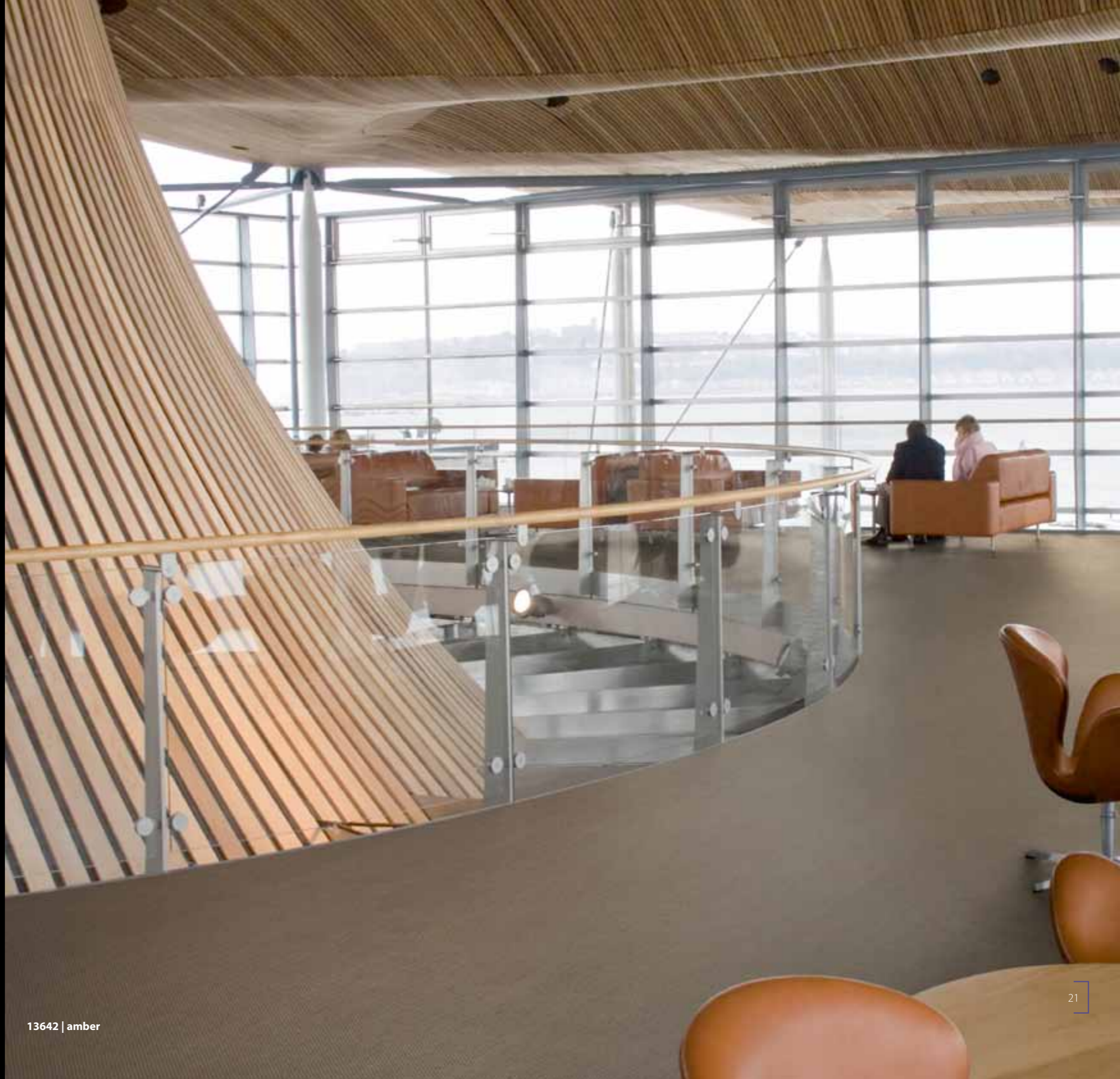


13632 | cord



13642 | amber

13642 | amber



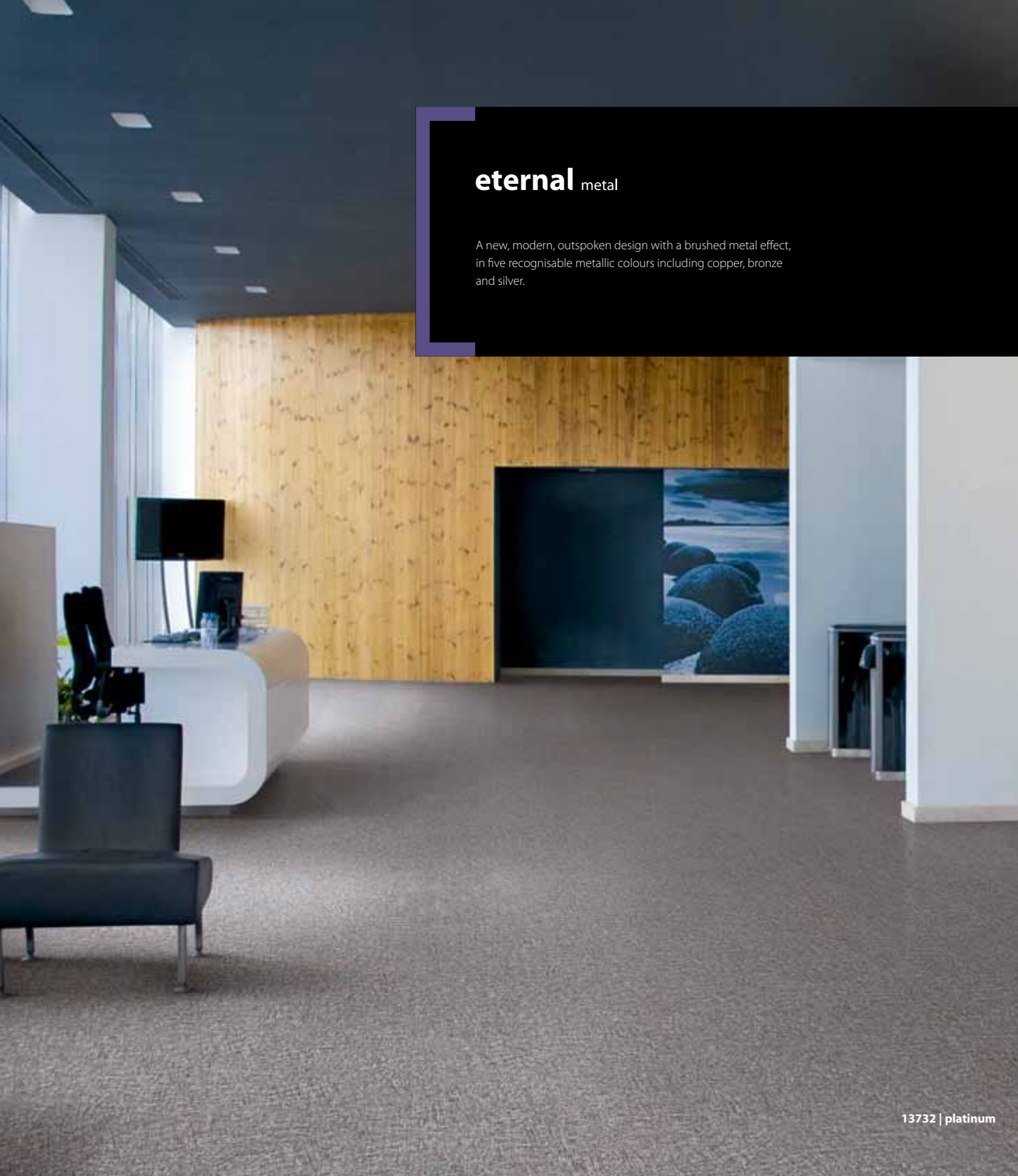


## eternal metal

A new, modern, outspoken design with a brushed metal effect, in five recognisable metallic colours including copper, bronze and silver.



Mix & Match graphic;  
Contrast, Concrete and Metal



13712 | chrome



13722 | pewter



13732 | platinum



13742 | copper



13752 | bronze

13732 | platinum



# eternal palette

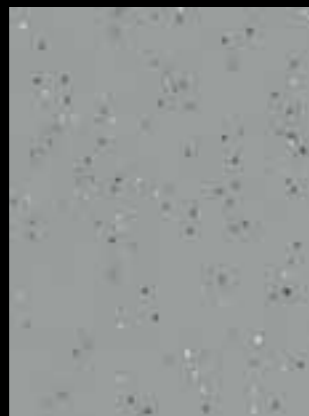
A solid look with a fine glitter in the coloured wear layer offering a surprising effect for those with an eye for detail. A contemporary, international fresh palette of 24 colours, including soft tones and bright primary colours.



Mix & Match colourful;  
Wood, Contrast  
and Palette



40812 | taupe



40212 | mouse



40112 | clay



40002 | snow



40402 | oyster



40272 | sky



40082 | tundra



40302 | sahara



40722 | pink



40162 | marine



40032 | pistachio



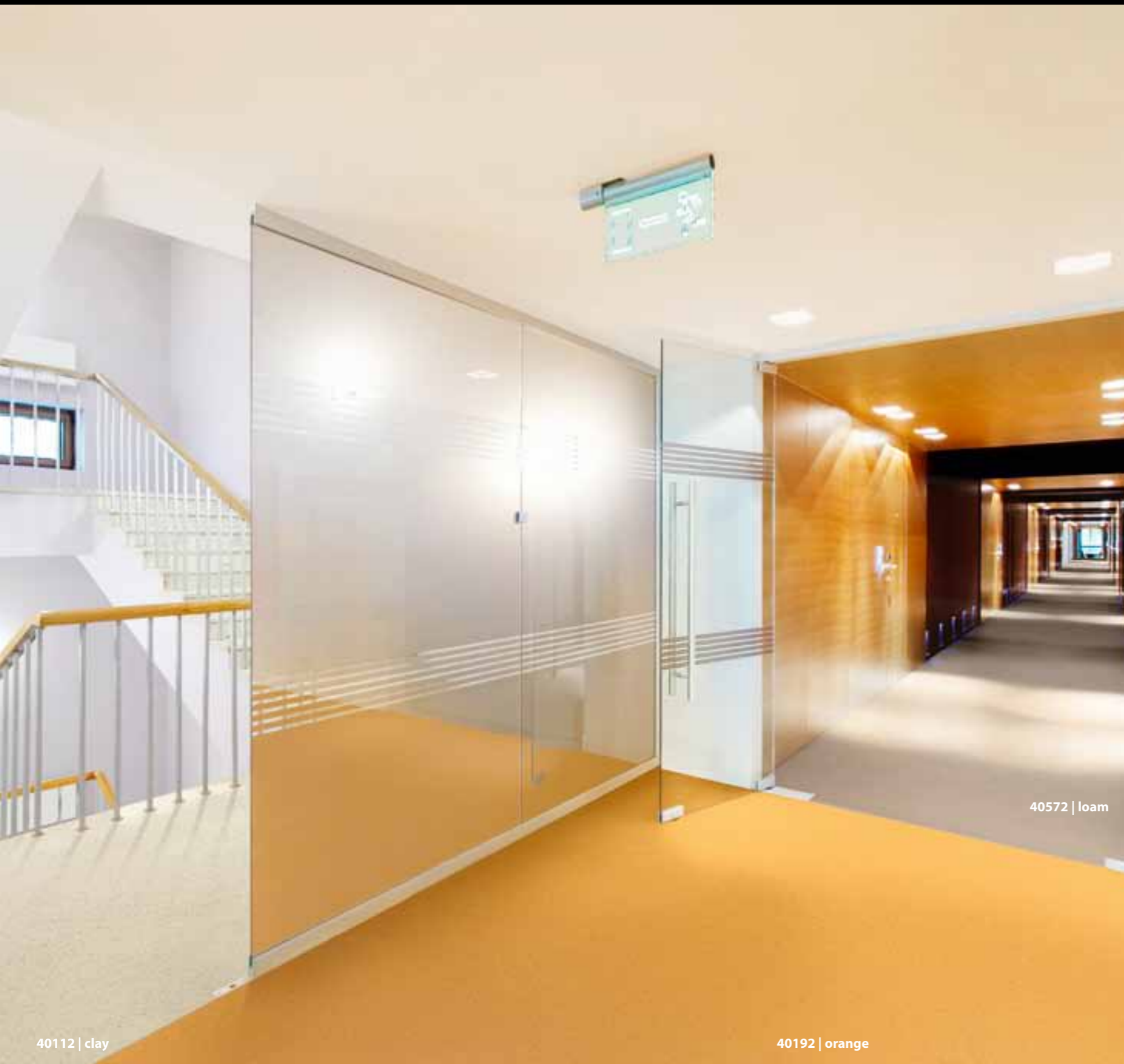
40512 | dune

24



40272 | sky

40212 | mouse



40112 | clay

40192 | orange

40572 | loam



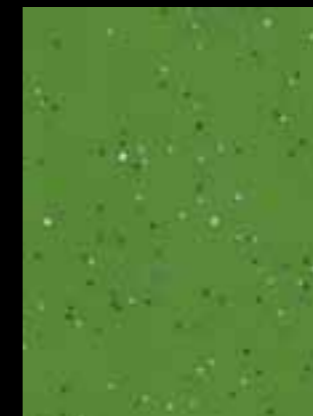
40352 | corn



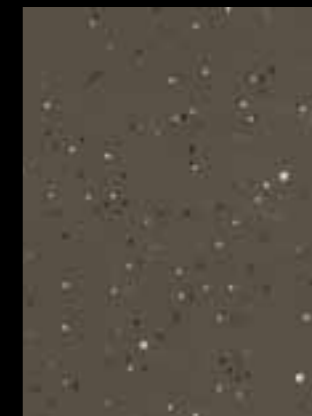
40192 | orange



40572 | loam



40882 | apple



40482 | dragon



40062 | umber



40232 | night



40382 | carbon



40662 | steel



40452 | pepper



40602 | plum



40772 | raisin



# eternal contrast

A unique graphic design with a contrasting design element scattered into a coloured wear layer. Available in four black, white and grey colours and an additional fresh colour scheme of eight bright, outspoken colours.



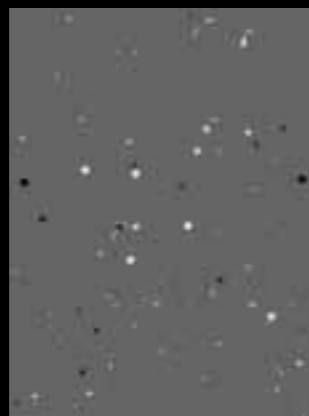
41002 | snow



41292 | charcoal



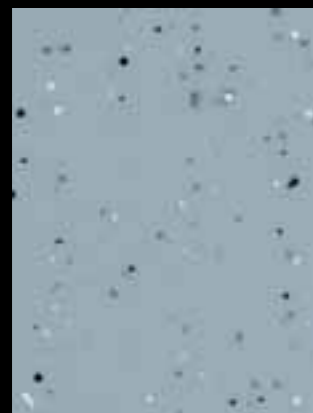
41322 | smoke



41252 | mercury



41032 | pistachio



41272 | sky



41662 | steel



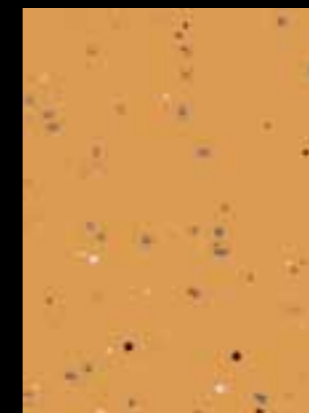
41232 | night



41882 | apple



41032 | pistachio



41192 | orange



41972 | brick



41012 | tomato



# The Eternal collection; good looks that last

**Calandered backing, consistent and dimensionally stable construction, colour fastness and unique embossing; it's a combination of these elements along with the PVC wear layer and PUR surface layer treatment that make the Eternal collection stand out from the crowd.**

Quite simply, guaranteed performance over time is the significant difference. The cleaning and maintenance regime is simple and efficient, maintaining Eternal's "as new" appearance over many years.

### PUR pearl lacquering technique

For the majority of our designs we use our proven PUR pearl lacquering protection technique. The application technique for the lacquering layer assures an even amount of lacquering both on top and in the deeper areas of the embossing. This matt embossed lacquer layer ensures the highest level of chemical and scuff resistance. The use of a specially developed 'flexible lacquer' helps to prevent the

surface from scratching and maintains the long lasting appearance.

### Product construction

A transparent wear layer, or coloured wear layer where Palette and Contrast demand it, ensures maximum wear resistance and maintains the integrity of the design. A non woven, fully impregnated, glass fleece layer functions as the backbone of the product. It ensures the dimensional stability and allows a lean-development approach. Adding to stability and the high quality is the optimised calandered backing, a firm but flexible and embossed layer allowing easy installation, even if coving or in wetroom applications. The backing layer, which is a substantial part of the product construction, contains 40% re-used content.

# Committed to protecting our environment

The Eternal general purpose vinyl collection is a prime example of Forbo's commitment to protecting the environment and investing in a sustainable future. The Eternal collection is produced using "green" electricity and modern production technology that reduces the processes involved to a minimum. Eternal conforms to all standards, including the new VOC emission classes. Eternal is made in Europe for largely European markets, reducing transport-related carbon emissions. The easy cleaning, minimum demand for detergents and long lasting performance contribute to a better environment in many ways.

### Compliance Plus

As a principle, Forbo works to "Compliance Plus". It's a commitment set to our own standards, one that goes beyond government regulations and requirements – and we see investments in people, processes and products that further

improve our environmental performance as investments for the future, not a cost of doing business. We use independent Life Cycle Assessments to constantly seek ways to measure and minimise the environmental impact of our products from raw material extraction to end of life.

### Reducing cleaning & maintenance

Reducing cleaning is another element in sustainability and performance. The PUR pearl finish makes the product easy to clean and its lasting performance means that Eternal will stay in prime condition, even under heavy traffic conditions. In addition, installing one of our Nuway or Coral entrance systems will help cut dirt and moisture penetration by up to 90%.

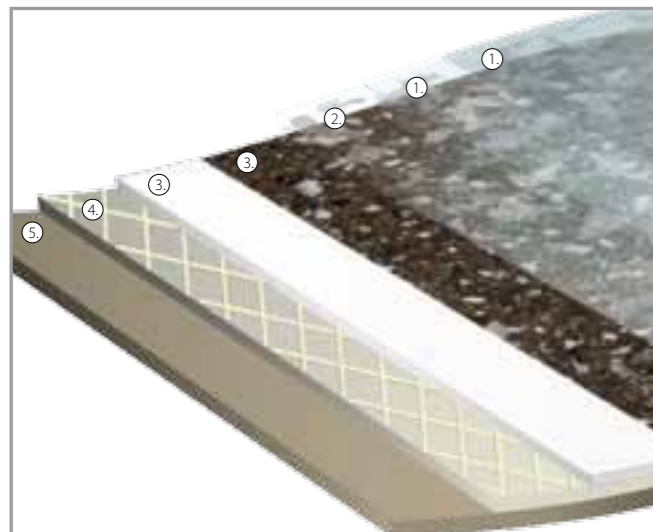
### Vinyl 2010

Forbo is a founder member of Vinyl 2010, whose goal is to increase PVC recycling in Europe.

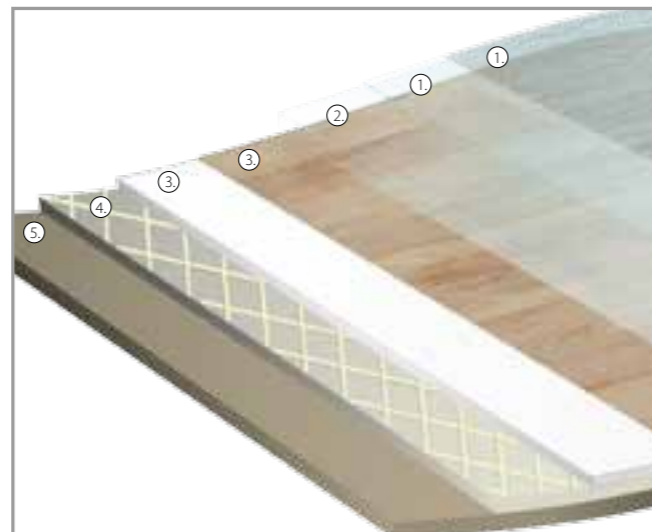
**BREEM ratings**  
Compact Vinyl Heterogeneous PVC floor coverings (2014)

Building Type	Education	Health	Domestic	Detail (Durability)	Detail (Finish)	2010 Results
Commercial	A+	A+	A	A+	A+	

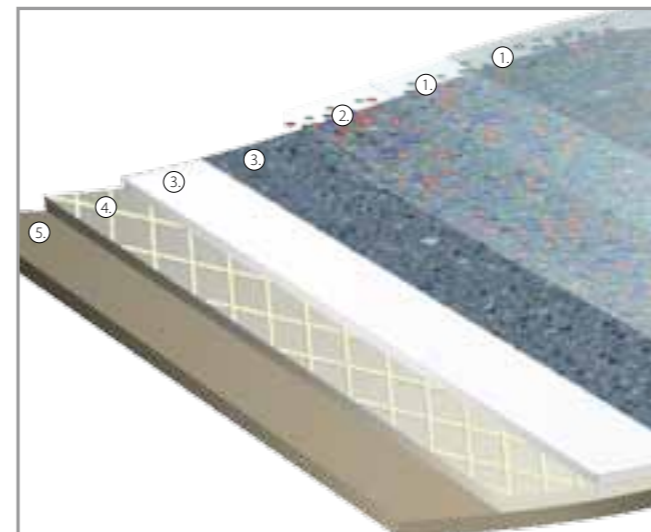
**Eternal Stone**  
1. PUR pearl lacquered finish – R10  
2. Transparent compact wear layer 0.7mm with integrated chips  
3. Printed layer  
4. Impregnated glass fleece  
5. Grey calandered backing with 40% re-used content



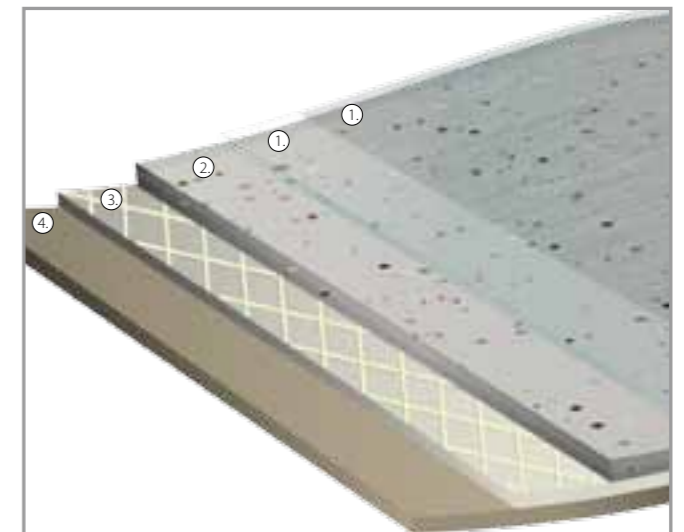
**Eternal Wood/Slate/Weave/Sand/Concrete/Metal/Marble**  
1. PUR pearl lacquered finish – R10  
2. Transparent compact wear layer 0.7mm  
3. Printed layer  
4. Impregnated glass fleece  
5. Grey calandered backing with 40% re-used content



**Eternal Smaragd**  
1. PUR pearl lacquered finish – R10  
2. Transparent compact wear layer 0.7mm with integrated microspheres  
3. Printed layer  
4. Impregnated glass fleece  
5. Grey calandered backing with 40% re-used content



**Eternal Contrast/Palette**  
1. PUR pearl lacquered finish – R10  
2. Coloured compact wear layer 0.7mm with integrated chips  
3. Impregnated glass fleece  
4. Grey calandered backing with 40% re-used content





## More Forbo vinyl collections

### Allura LVT

The new Forbo Allura collection is a vibrant versatile range of floor covering options that take the world of luxury vinyl tiles to the next level of sophistication and performance. Allura is a cutting-edge collection of wood, stone and abstract designs, developed in-house by our international design team available in tile & plank format.

### Sarlon Acoustic project vinyl

Reducing noise pollution reduces stress and promotes the well-being, comfort and efficiency of people working or learning. Forbo offers the broadest range of acoustic project vinyl floors. Uniquely, these form a single collection and are ideal for reducing and managing noise pollution in open plan offices, shops, schools, housing, hospitals and reception areas. Sheet & tile formats are available.

### Step Safety vinyl

Forbo's Step safety project vinyl collection is available in eight different ranges, all adapted to meet different slip resistant requirements. Surestep Original and Safestep provide enhanced slip resistance by incorporating either quartz or carborundum grains into the wear layer, or a combination of the two. Bright, clear designs such as Surestep Wood, Stone, Star and Colour are achieved by using aluminium oxide of the same hardness. The result is safety flooring that is tough, long-lasting and extremely wear-resistant. All Step floors are HSE compliant and the construction ensures sustainable slip resistance throughout the guaranteed life of the product.

## More Forbo Flooring



### Carpet Tiles

Tessera and Westbond carpet tiles are renowned for their aesthetic styling and outstanding performance. The Forbo carpet tile offer includes everything from loop pile, random lay, cut & loop and cut pile right up to exclusive fusion bonded. Designed to meet a variety of application and style needs these ranges can also be easily combined with our Flex loose lay tiles and planks.



### Linoleum

For the ultimate environmental solution Forbo offers a huge range of natural linoleum floor coverings, plus surface linoleum for furniture and wall covering. More than 100 years of experience and the most environmentally friendly production techniques and products ensure the highest quality. Continual investment in product development ensures Forbo always offers the most innovative floor covering choices for project customers and consumers.



### Flotex floxed flooring

The solid vinyl base of Flotex, reinforced with glass fleece, is impermeable to water and provides an anchor for millions of straight nylon fibres – over 70 million per square metre – making it the densest textile floor covering available. Flotex's comfort, sense of luxury and Sanitized® anti-microbial treatment make it the perfect office floor and the best hygienic alternative to carpet in care facilities, while its design features make it the ideal floor for retail and hospitality environments.



### Entrance Systems

Every location has an entrance and besides being your first point of contact with your visitor, it also provides the first point of protection for the flooring inside. Forbo's integrated entrance systems include Coral textile clean off products designed to deal with various levels of dirt and moisture while Nuway rigid, engineered systems cope with heavier footfalls and point loading of wheeled traffic. Coral and Nuway can also be combined to create fully functional and colour co-ordinated entrance areas.



allura - LVT

sarlon - acoustic



surestep - safety



# Forbo FloorCare method

The Eternal project vinyl collections are easy to clean and maintain, thanks to their smooth and highly durable PUR pearl and PUR coated surface.

## Cleaning after installation



- Clean the floor with cleaner and a mop
- Pick up dirty water with a wiper and mop or a water vac
- Rinse with clean water and a mop
- Allow the floor to dry



- When intensive (intense) traffic is expected:
- Apply a full Spray-film with an applicator
  - Buff the Spray-film with a rotary machine and a buffing pad

## Regular cleaning



- Wipe with a dust mop and dust cloth, or vacuum the floor



- Remove spots with a damp mop

## Periodic cleaning



- Spray clean with a rotary machine and a buffing pad, use spray where necessary

## Occasional maintenance



- Scrub with cleaner, a rotary machine and a scrub pad
- Pick up dirty water with a wiper and mop or a water vac
- Rinse with clean water and a mop
- Allow the floor to dry



- When intense traffic is expected:
- Apply a full Spray-film with an applicator
  - Buff the Spray-film with a rotary machine and a buffing pad

## Products

Forbo Cleaner is an effective and pH neutral cleaner.  
 Forbo Spray acts both as a spray cleaner and as a protective, satin gloss polish.  
 For more information: [www.forbo-flooring.co.uk](http://www.forbo-flooring.co.uk)  
 If you want to use alternative products, please consult your local supplier.

# Technical specifications

Eternal meets the requirements of ISO 10582 and EN 649

	Total thickness	ISO 24346 / EN 428	2.0 mm
	Wear layer thickness	ISO 24340 / EN 429	0.7 mm
	Collection size		113
	Commercial use	ISO 10874 / EN 685	34 very heavy
	Industrial use	ISO 10874 / EN 685	43 heavy
	Roll width	ISO 24341 / EN 426	2.00 m
	Roll length	ISO 24341 / EN 426	± 25 m
	Total weight	ISO 23997 / EN 430	2.8 kg/m <sup>2</sup>
	Dimensional stability	ISO 23999 / EN 434	< 0.1 %
	Residual indentation	ISO 24343-1 / EN 433	≤ 0.05 mm
	Abrasion resistance	EN 660-2	group T
	Castor chair continuous use	ISO 4918 / EN 425	no effect
	Light fastness	ISO 105-B02	≥ 6
	Flexibility	ISO 24344 / EN 435	ø 10 mm
	Resistance to chemicals	ISO 26787 / EN 423	very good
	Slip resistance	DIN 51130	R10
	Electrical resistance	EN 1081	R1 > 1·10 <sup>9</sup> Ω
	Suitable for floor heating		Yes*
	Wetroom certification	EN 13553	Yes

All Eternal products meet the requirements of EN 14041



	Reaction to fire	EN 13501-1	B <sub>f</sub> -s1
	Slip resistance	EN 13893	DS - μ ≥ 0.30
	Body voltage	EN 1815	≤ 2 kV
	Thermal conductivity	EN 12524	0.25 W/m·K

\* Temperature < 30 °C

The quality and environmental management systems of Forbo Coevorden (NL) where Forbo Eternal is manufactured are certified in accordance with ISO 9001 and ISO 14001



## Recommended Adhesives

Our recommended adhesive for the Eternal collection is Eurosafe Special 540. Please contact customer services for further information.



## Service products

As a total solutions provider, Forbo offers a collection of products to complement the installation, finishing and maintenance of our products. An optimal assortment of adhesives, welding rods, subfloors and installation tools can be offered. To give the floor the finishing touch, we provide a collection of skirtings, profiles and stair nosings.