

CI/SfB
| (43) | Tn6 |

April 2010

Flotex Sottsass

dare to be different

creating better environments

forbo
FLOORING SYSTEMS

DARING DESIGN. INSPIRATIONAL FLOORING.

What happens when you combine leading edge technology with outstanding design? We call it the Sottsass Collection. But don't just take our word for it. Here's the view of an editor from a UK flooring magazine: "Every once in a while there comes a product that is set to transform the way we think. Ground breaking in its approach, the Sottsass Collection could change the way the specification industry looks at flooring".*

This collection is the result of a creative collaboration between Forbo Flooring and the Italian design studio, Sottsass Associati. The late Ettore Sottsass and his partner and head of studio, Christopher Redfern, have together created the four designs that comprise this Flotex collection.

*Tom Bourne, Editor Contract Floors, 2007

ETTORE SOTTASS

(1917 – 2007)

THE MAESTRO OF ITALIAN DESIGN

At the crossroads of art, design and architecture, the work of Ettore Sottsass represents the birth of non-conformist Italian design, somewhere between the industrial and the experimental. An iconic figure in Italian design since the 1950's, this ingenious free thinker sought to explore every creative avenue with a non-conformist attitude that was both assuming and audacious.

Whether designer, architect, sculptor, artist or photographer, Ettore Sottsass has left his mark through his sculptures, jewellery, artwork, furniture and industrial objects. Today, many designers and architects emulate his spiritual heritage, radical in its stance against functionalism.

Born in 1917 in Austria, Ettore Sottsass was the son of Ettore Sottsass Sr, a major figure in Italian avant-guard architecture and former pupil of Otto Wagner. He founded his own design agency in 1947, having worked as an architect with his father in the reconstruction of a post-war Milan.

In 1956 he met Adriano Olivetti and became a consultant designer for the renowned Milan based company. This relationship lasted until 1980. During that time Sottsass was awarded the Comosso d'Oro for his design of the first Italian computer and in 1959, he designed 'Valentine', a red typewriter that is considered today to be one of the defining design works of the 20th century.

During the 60's and 70's Ettore aligned himself with the Italian avant-guard, a veritable melting pot of ideas. Active at the heart of the radical anti-design movement, in 1972 he participated in the "Italy: the new domestic landscape" exhibition, organised at the New York Modern Art Museum. In 1981, at the age of 64, he founded the Memphis group and the Sottsass Association.

A radical thinker, for him circles, cylinders, squares and lines were the only totemic signs that he judged sufficient enough to express himself with. Taking pleasure from simplicity, his works stand testimony to this search for a perfect balance of elements.

CHRISTOPHER REDFERN

DESIGN REQUIRES PRECISION

Industrial designer and director of the design department at the Sottsass Association in Milan, Christopher Redfern was born in England and studied in France and Germany.

Educated at, amongst others, the noted School of Art & Design in Norwich and at Aix-la-Chapelle, he lived and worked in Hong Kong from 1994, where he collaborated with many design companies across Asia. Later, he settled in Stockholm, Sweden, where he worked as a designer in the furniture industry. In 1996, searching for an alternative approach to his creative production, he joined the Sottsass Association in Milan and became one of the famous "Associates" in 1998.

Head of the Sottsass Association with designer Ernest Mourmans, he produces award winning articles for clients such as Alessi, Seiko, Agfa, Kaldewei, LG, Cartier, ICF, Bodum, Poltrona Frau, BB Italia, Segis, Cassina and Sarafino Zani,. He also founded his own architecture studio in 1999 which specialises in hotel construction and interior architecture.



MILAN...

...LONDON

SOTTASS ASSOCIATI

An internationally renowned creative agency in the fields of architecture, design and graphics, the Sottsass Association was founded in 1980 by Ettore Sottsass, Marco Zanini, Aldo Cibic and Matteo Thun.

The influence and philosophical beliefs of the principal founders are deeply anchored in the company culture and the agency specialises in industrial design as well as architecture.

Sottsass Associati has worked with a wide variety of prestigious international brands such as Esprit, Apple, Phillips, Siemens, Alessi, Zanetta and Fiat. They have been awarded numerous professional awards as recognition of their exceptionally high standard of work.



BACTERIA
COLLECTION

In Bacteria, Redfern has taken one of Ettore Sottsass' signature designs, created in the late 1970's, a forerunner of the current modern age of nano technology and genetic engineering. Optically challenging, the design is open to wide interpretation, close up amoebic forms sway and shift yet from afar it appears as a constellation of distant stars. Bacteria is available in 20 colourways.

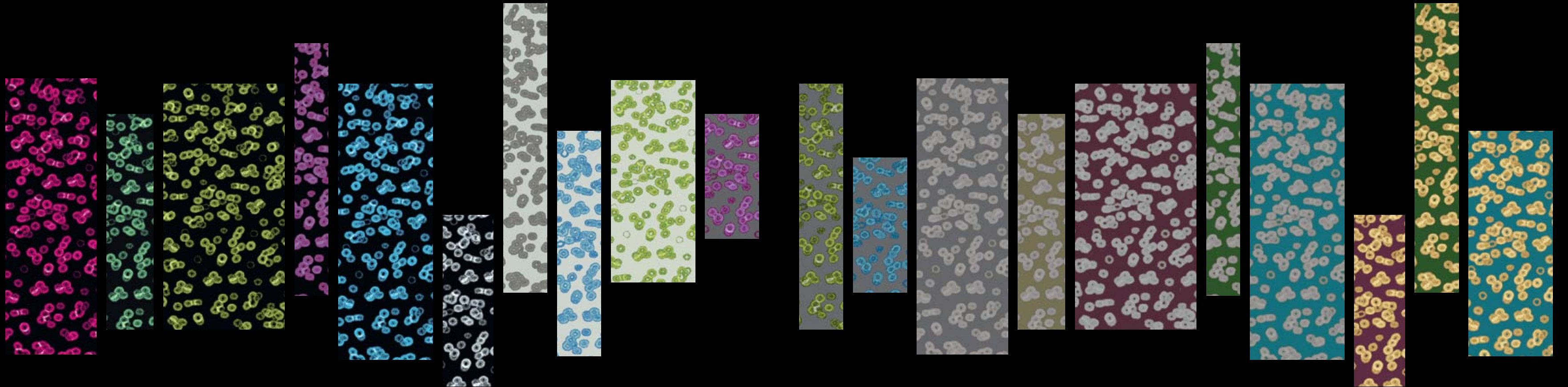
BACTERIA



Bacteria | 990101









TERRAZZO

COLLECTION

Terrazzo by Sottsass is a witty “twist” on the concept of Italian Terrazzo (a traditional flooring created several hundred years ago when Venetian workers found a use for discarded marble remnants). Sottsass Associati has developed this idea to give the impression of a beautifully laid Mediterranean terrazzo floor. However, on closer inspection, the “chips” in Terrazzo are revealed as pieces of torn paper – each holding its own story – a shredded love letter or a business document? It’s left to the individual to decide and to create their own narrative. Terrazzo is available in 13 colourways.

TERRAZZO



Terrazzo | 990701



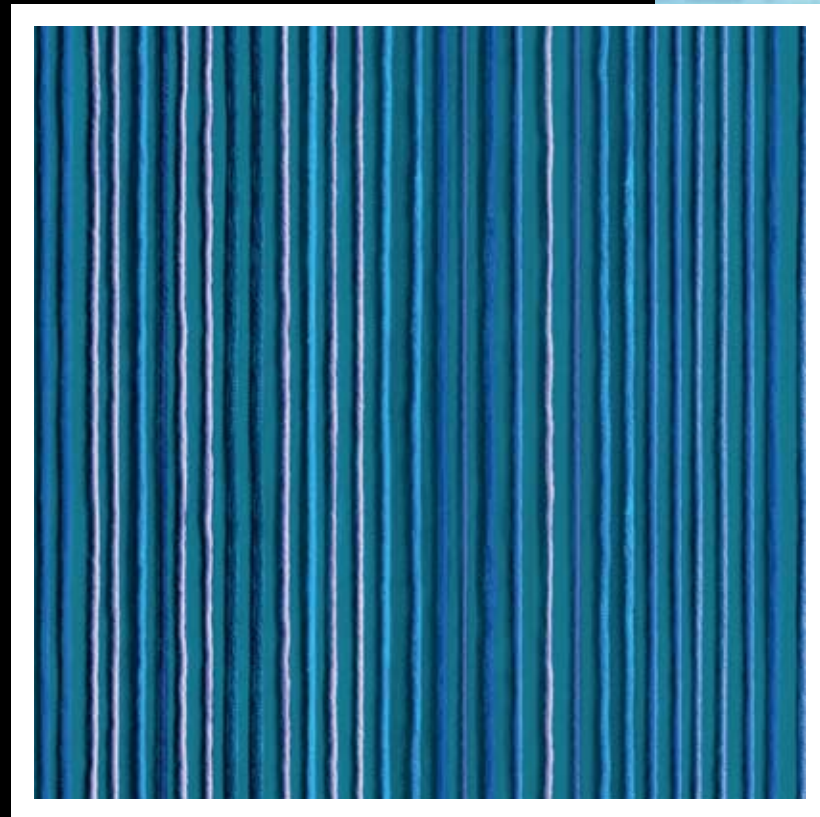




WOOL
COLLECTION

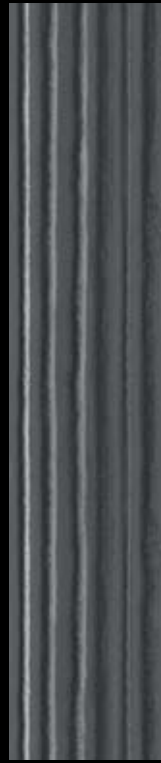
The Wool design was conceived by Ettore Sottsass when he laid filaments of wool yarns, collected from various countries, onto a flat, coloured surface. It plays on the textures of the individual strands of the natural fibres to give a sense of depth and warmth to the floor along with a defined linear pattern that can dramatically shift the perspective of interior spaces. Wool is available in 12 colourways.

WOOL



Wool | 990601







KASURI
COLLECTION

Kasuri draws its inspiration from the traditional Japanese woven textile technique used to create the eponymous fabric. Redfern uses the digital pixel in the fusion of contemporary and traditional references inherent in this design. Kasuri is available in two scales of design, each in 8 colourways.

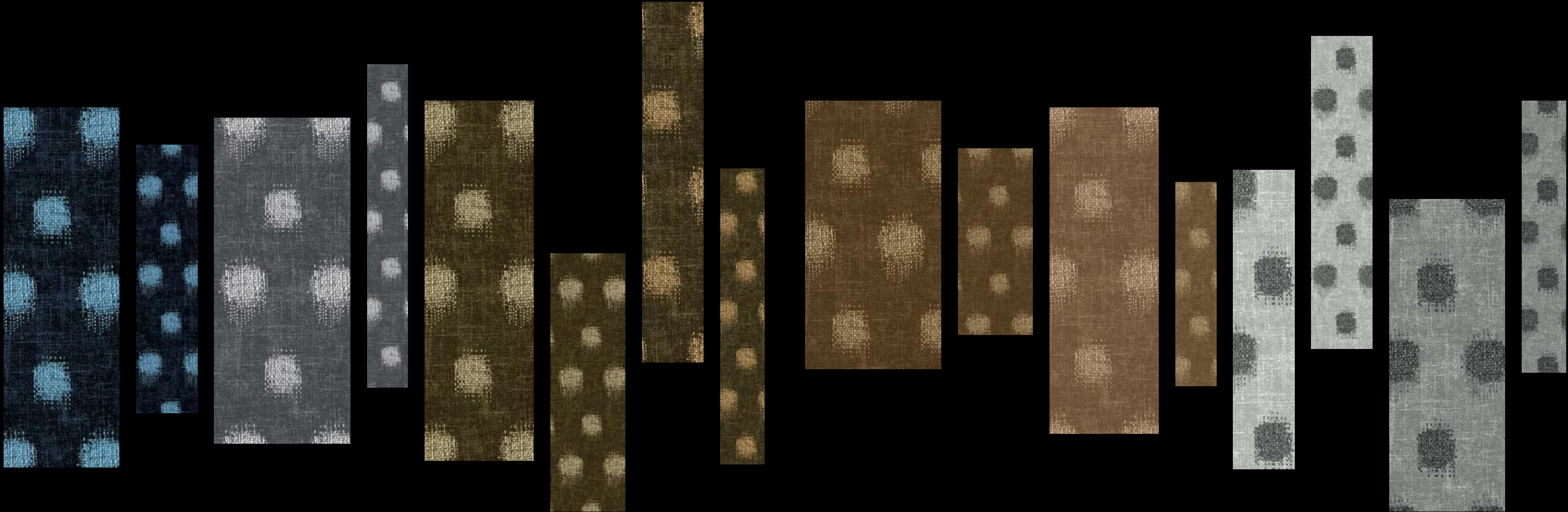
KASURI



Kasuri | 990803







TECHNICALLY SUPERIOR

Flotex is made of a solid vinyl, reinforced base layer and a densely flocked surface of nylon 6.6 fibres that are anchored firmly into the base. Flotex is extremely dimensionally stable and has the visual and acoustic benefits of a textile floor covering whilst having similar functional properties to a resilient floor.

Performance for life

The solid vinyl base of Flotex, reinforced with glass fleece, is impervious to water and anchors millions of straight nylon fibres, over 70 million per square metre, making it the densest textile product available.

As all fibres are aligned and positioned vertically, they all react in the same way to the feet and trolleys that run over the surface, without leaving walkways or traffic lanes. Flotex is the perfect castor chair surface; not too smooth (so not slippery), not too soft (which can prove problematic for wheeled traffic).

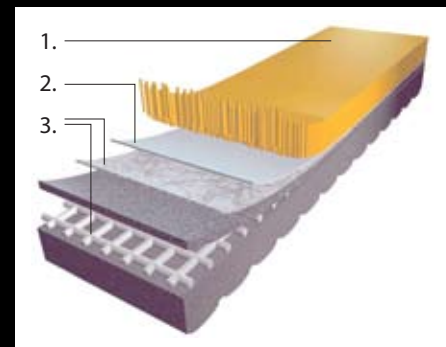
It can be a perfect office floor as well as the best hygienic alternative to carpet in care facilities and any environment where carpets (or carpet tiles) are desired because of their comfort and sense of luxury.

At the same time, its design features make it the ideal floor for retail and hospitality environments as it can also survive heavy footfall and trafficked dirt. No other floor covering beats Flotex in style and performance.

Safe and comfortable

The dense, flocked surface provides an ideal acoustic barrier reducing noise by up to 20dB, ensuring the comfort & wellbeing of those in application areas. At the same time the nylon fibres provide a surface that is smooth yet ensures enough resistance to foot traffic to be considered slip resistant and as such passes the UK SGR pendulum test. Moreover Flotex is a fire resistant floor covering fulfilling all requirements up to the highest standard in commercial use.

1. A densely flocked surface of nylon 6.6 fibres that are anchored firmly into the base layer
2. Solid vinyl, reinforced base, treated with Sanitized®
3. Glass fleece layer for extreme dimensional stability



- Flotex has ten times as many fibres per square metre than carpet
- Can be cleaned using standard cleaning equipment
- 100% waterproof, rot-resistant, highly stable and very long-lasting
- Smooth, velour-like surface that is comfortable to walk on
- Warm underfoot
- Excellent slip resistance
- Excellent acoustic properties up to 20dB
- Fire resistant

UNRIVALLED PERFORMANCE

Creating a healthier environment

The anti microbial Sanitized® treatment of the Flotex base ensures constant protection against bacteria such as MRSA and E.coli, or moulds such as athletes foot fungi. The Sanitized® treatment is compounded into the backing of Flotex, continually refreshing the anti-microbial performance without degradation through cleaning or vacuuming. This makes Flotex the ideal floor covering for healthcare or educational institutions such as care facilities or nurseries.

It also suppresses the growth of dust mite populations. Independent tests show that a dust mite population introduced to Flotex is reduced by an average of 86% over an eight week period.

Flotex also has a positive impact on the lives of allergy sufferers as daily vacuuming cleans away twice as many allergens compared to conventional carpets due to Flotex's unique fibre construction that releases dirt in a single cleaning exercise. That is why Flotex carries the British Allergy Foundation's seal of approval.

Cleaner for longer

When prescribed cleaning procedures are followed, Flotex outperforms any textile floor covering in appearance. It's smooth upright nylon 6.6 fibres allow dirt to be easily removed by ordinary vacuuming. No dry dirt is trapped by any loops or twists and the vacuum action reaches the very base of the pile, meaning that all dirt can be removed.

The vinyl base combined with the nylon 6.6 flocked finish also allows the floor covering to be fully cleaned with water and detergents. Steam cleaning or mechanical cleaning methods can also be applied resulting in cleaner floors.

Flotex is the only truly washable floor covering which enables the floor to be restored even after heavy soiling.

- Anti-microbial Sanitized® treatment
- Continuous protection against bacteria
- Approved by the British Allergy Foundation
- Dirt can be easily removed by ordinary vacuuming
- Spills can be washed thoroughly with everyday cleaning materials
- Even chewing gum presents no problem
- The only truly washable textile floor covering



Vacuuming
Flotex



Vacuuming
conventional carpet

MORE FLOTEX



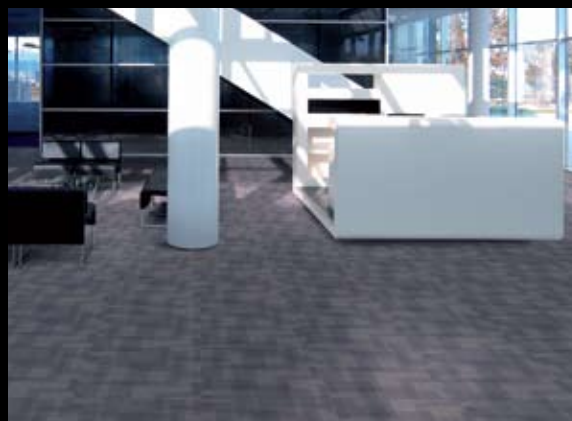
flotex® classic

The Flotex Classic designs are characterised by their subtle nuances in colour and by designs that deliver a perfect tranquil all-over look, ideal for commercial applications such as offices, schools and healthcare institutions.



flotex® HD

Flotex HD is our unique High Definition digital print collection that offers superior visual aesthetics with an almost 3D-like appearance. Through its advanced technology, Flotex HD offers amazing designs with a depth of detail and vibrancy of colour never before seen in Flotex, opening up many new design possibilities for specifiers.



flotex® tiles

Some of the Flotex Classic ranges are also available in tile format using the same flocking technique but with a recycled backing. Depending on the design, Flotex tiles can be installed either broadloom or chequerboard. Please check our Flotex tile sample book for more details.

MORE FORBO FLOORING



Linoleum

As world leader in linoleum, Forbo has an exceptionally wide offer of sustainable finishes for floors, walls and surfaces. Marmoleum, Bulletin Board and Furniture linoleum are all made from natural, renewable raw materials making them the perfect answer to today's ecological concerns.

Marmoleum is BRE accredited and has also been independently awarded many international eco labels including the Swan Mark. In addition, Marmoleum receives an exceptionally good Life Cycle Assessment (LCA) score, details of which can be viewed on our websites www.forbo-flooring.co.uk/www.forbo-flooring.ie



Vinyl

Forbo project vinyl ranges are manufactured using the most advanced production techniques and stand out through their design and functionality. Our comprehensive portfolio spans general purpose, slip resistant, acoustic, static control, design tiles and wet room solutions.

With such a broad range combining performance and design it's always possible to meet both functional and aesthetic needs.



Textile Flooring

In the Forbo portfolio we offer a wide range of carpet tiles and entrance systems.

From loop pile through to luxurious fusion bonded carpet tiles, there is a Tessera or Westbond carpet tile range to suit all interior applications.

Forbo leads the UK entrance flooring market with a fully integrated range of systems including textile, modular and rigid options covering all requirements. Details of our Coral and Nuway ranges can be found in our Entrance Flooring Systems brochure.

FORBO FLOOR CARE METHOD

Flotex Sottsass

Cleaning after installation



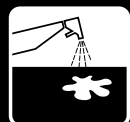
- Vacuum clean the floor using an upright vacuum cleaner with a powered brush
- Remove stains or spills locally using clean warm water
- Always work from the outside of the stain inwards
- Remove excess water
- Allow the floor to dry

Regular cleaning



- Vacuum clean the floor using an upright vacuum cleaner with a powered brush
- Remove stains or spills locally using clean warm water
- Always work from the outside of the stain inwards
- Remove excess water
- Allow the floor to dry

Occasional maintenance



- First soak stains locally by spraying with a solution of mild detergent
- Scrub with plenty of warm water, using a machine for carpet wet cleaning with brush action
- Always ensure all detergent is fully rinsed from the floor and no detergent residue is present



- Allow the floor to dry

Technical specification

Flotex meets the requirements of EN 1307

	Total thickness	ISO 1765	4.3mm
	Commercial heavy	EN 685	Class 33
	Roll width		2.00 m
	Roll length		30 m
	Total weight	ISO 8543	1.8 kg/m ²
	Dimensional stability	ISO 2551	< 0.2%
	Abrasion resistance	EN 1963	<35g Pile loss
	Castor chair continuous use	EN 985	r = ≥2.4 continuous use
	Light fastness	EN ISO 105 B-02	6
	Slip resistance	DIN 51097	> 0.7 Dry and wet
		UK SGR pendulum	Dry - very low slip Wet - low slip
	Electrical resistance	ISO 10965	>10 ⁹ Ω
	Acoustic	ISO 140-8	Impact sound ΔLw = 20 dB
		ISO 354	Sound absorption = 0.10

Flotex meets the requirements of EN 14041



EN 14041

	Reaction to fire	EN 13501-1	B _{fl} -s1
	Slip resistance	EN 13893	DS: >0.30
	Body voltage	ISO 6356	< 2kV
	Thermal resistance	ISO 8302	0.0526 m ² K/W

Recommended adhesives

Our recommended adhesives for the Flotex collection are Eurosafe 540 and Eurosafe 233 contact adhesive. Please contact customer service for more information.

Service products

As a total flooring solutions provider, Forbo offers a collection of products to complement the installation, finishing and maintenance of our products. An assortment of levelling compounds, primers, sub floors and installation tools are available. To give your floor the finishing touch, we also provide a collection of skirtings, profiles and stair nosings. Please contact customer services for more information.

Forbo Flooring Systems is part of the Forbo Group, a global leader in flooring, bonding and movement systems, and offers a full range of flooring products for both commercial and residential markets. High quality linoleum, vinyl, textile, flocked and entrance flooring products combine functionality, colour and design, offering total flooring solutions for any environment.

UK

Forbo Flooring UK Limited
PO Box 1, Kirkcaldy, Fife KY1 2SB
London EC1 showroom
79 St John Street, Clerkenwell
London EC1M 4NR
Tel: 0207 553 9300

For commercial enquiries:

If calling from the North,
Midlands, London & South East
Tel: 0800 0282 162
Fax: 01772 646 912

If calling from Scotland & South West

Tel: 0800 0935 258
Fax: 01592 643 999

Nuway enquiries:

Tel: 01773 740 688
Fax: 01773 740 640

Residential enquiries:

Tel: 0800 0935 846
Fax: 01592 643 999

Email: info.flooring.uk@forbo.com
www.forbo-flooring.co.uk

Samples:

Tel: 0800 731 2369

Ireland

Forbo Ireland Ltd
2 Deansgrange Business Park
Blackrock
Co Dublin

Tel: 00353 1 2898 898

Fax: 00353 1 2898 177

Email: info.ireland@forbo.com

www.forbo-flooring.ie

Registered office:

Forbo Flooring UK Limited
Den Road, Kirkcaldy
Fife KY1 2ER

Registered in Scotland: No 41400

