

COMPARISON: KNOW WHAT YOU'RE GETTING



SD & EC Tile:

Available in Both SD & EC

Pressed Homogeneous Solid Vinyl Tile

Liquid Carbon Pressed Throughout Tile

Wax Never Used

20-year Warranty

Life-Time Conductivity Warranty

Conductivity Certificate of Each Batch

1,500 lbs. PSI (Static Load ASTM F-970)

10 Colors of Both SD & EC Tile Stocked

Repairable

Heat Weldable

Flash Coveable

24" x 24" Tile

ISO Certified up to a Class 2 Cleanroom

Minimal Likelihood of Cracking

"VCT Construction" Static Dissipative Tile:

Available in Only SD

Vinyl Composition Tile

Chemical additive (surfactant) used

Conductive Wax (polish) required

5-year Warranty

75 lbs. PSI (Static Load ASTM F-970)

6 Colors Available in SD Tile Only

Not Repairable

Not Heat Weldable

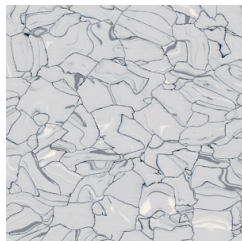
Not Flash Coveable

12" x 12" Tile

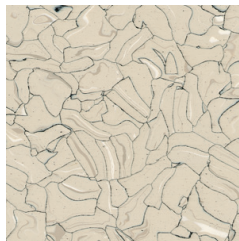
Greater Risk of Cracking



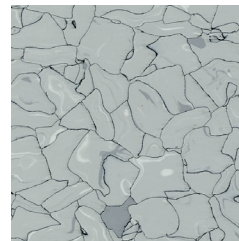
150201 | everest



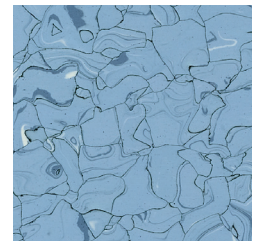
150205 | adula



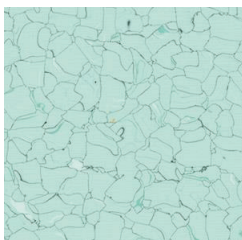
150213 | sahara



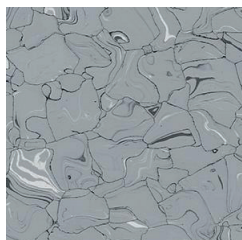
150206 | moonstone



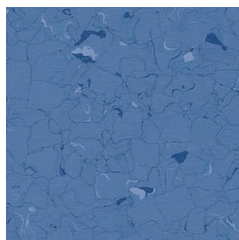
150222 | niagara



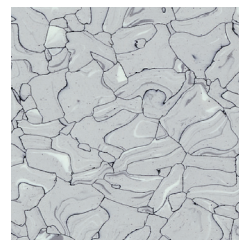
150225 | kiwi



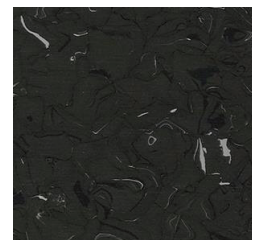
150207 | quartz



150265 | blue ridge



150204 | montblanc



150240 | etna



Colorex SD & EC Tile:

Electronics Segment:

Colorex is an advanced technical flooring system specifically designed to control static discharge in ESD sensitive areas and is widely used in ESD cleanrooms, manufacturing and assembly environments across the electronics industry.

Customers who have utilized Colorex: Intel, Seagate, TSMC, ST Microelectronics, TSMC, Facebook, Apple, Micron, Applied Materials & Snap Chat

Life-Science Segment:

Colorex meets the highest cleanroom specifications for conductivity, outgassing and particle emissions. Colorex is compliant up to ISO class 2 and GMP class A in areas such as pharmaceutical sterile manufacturing environments.

Customers who have utilized Colorex: Merck, Sanofi, Pfizer, Patheon, TEVA, KRKA, Polpharma Group & Novo Nordisk

Automotive Segment:

Colorex provides an ideal solution for any automotive manufacturer demanding premium quality floor coverings with electro-conductive or static dissipative characteristics, it is also aesthetically pleasing and will enhance any commercial interior, from specialized scientific research establishments to highly industrialized manufacturing and assembly environments.

Customers who have utilized Colorex: Siemens, Bosch, Audi, Hella, Continental, Porsche, ASK, Nexteer Automotive & TRW

Loose lay modular solutions - Colorex EC Plus Tile:

Renovating an industrial floor can be very costly and labor-intensive project. The downtime needed to move or disassemble heavy production equipment and the expense of renovating a complex subfloor must be accounted for, in addition to the cost of installing the new floor surface. Colorex Plus, a high performance loose lay tile solution provides a cost-effective alternative. Suitable for applications where expensive preparatory measures and lengthy downtimes are not acceptable, Colored Plus can be installed without interrupting operations and (unlike a poured floor) is immediately accessible. There's no need for special subfloor treatments or preparations. The tiles are connected across the floor using a unique dovetailing system that remains hidden from view. As the tiles have a genuine Colorex surface they offer all the proven features and benefits of a standard Colorex tile.

Customers who have utilized Colorex EC Plus: Philips Healthcare, Silicon Hills Design, Baylor Medical, Duke Medical Center & Hewlett-Packard.



FLOORING SYSTEMS