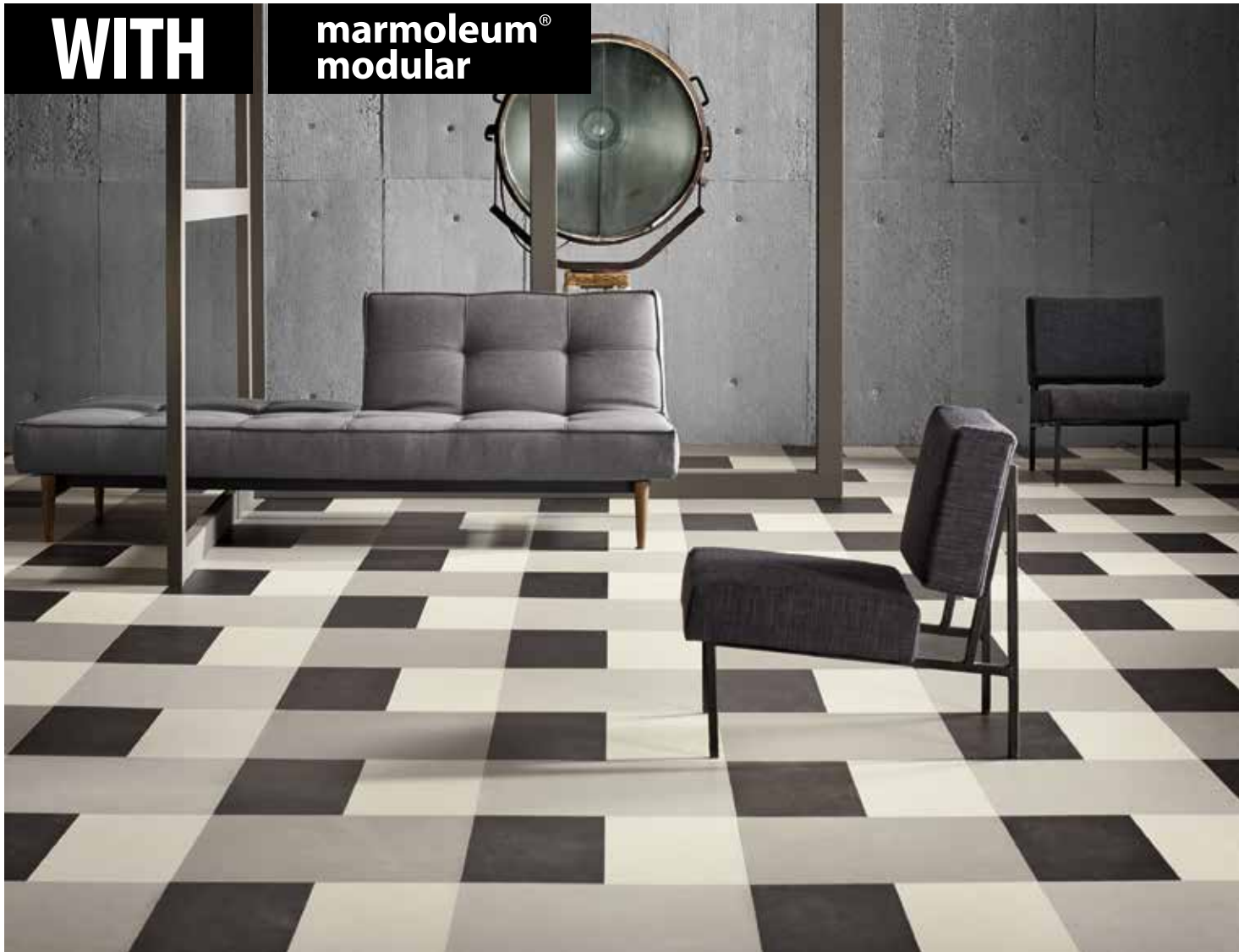


PLAY

WITH

marmoleum®
modular



marmoleum® modular

shade
colour
marble

creating better environments

forbo

FLOORING SYSTEMS



PLAY

WITH **marmoleum® modular**

A NEW FLOOR CONCEPT THAT GOES BEYOND THE TRADITIONAL OFFER



New and original

This new Forbo Marmoleum is a collection with a twist. We offer you 46 colours and designs with which you can create inspiring and fitting floors for your environment. There are four new tile formats, ranging from extra large (75x50) to small (25x25) and in between we have created two matching sizes (50x50 and 50x25) that complement the offer.

or stark contrasts the choice is yours. You can create strong looking concrete or marbled floor designs, you can be subtle by playing with tone in tone colour differences that create floors that mimic those of natural stones or concrete. Or you can be bold and colourful by using the expression of colour to create your own design highlights in your environment.

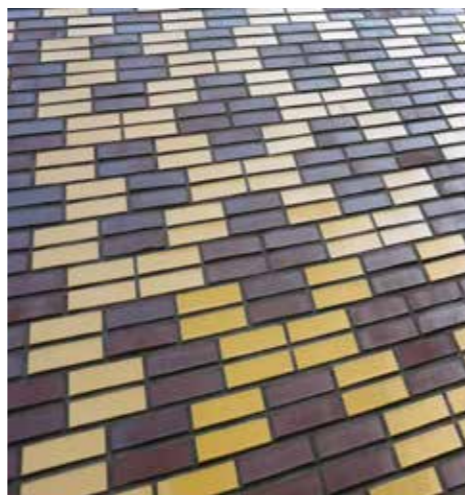
Linoleum 2.0

Whenever you thought of linoleum as an institutional product for healthcare or education facilities, think again. Whenever you thought of linoleum being available in marbled visuals in beige and grey, think again... this collection takes linoleum out of its traditional environment. Marmoleum Modular offers a playful experiment with colour and structure, like no other floor covering has done before. Subtle nuances

Creative freedom

Marmoleum modular offers you the possibility to create the floor of your choice. The collection invites you to play, combine and connect, shape, size and colour of the tiles you decide to use. In this way a complete new floor concept is created, one that goes beyond the traditional floor offer where just the design alone decides your choice. Now you can play with the shapes, sizes and tile formats you choose to create the floor you want to have.

TABLE OF CONTENT			
3	A new concept	22	Marmoleum natural tiles
4-5	The world of modularity	23	A sustainable choice
6-7	Play with...	24-27	Explanation of the floorplans
8-9	The grids online	28-29	Other Marmoleum collection
10-13	Play with shade	30	More Forbo Flooring collections
14-17	Play with colour	31	Technical table
18-21	Play with marble		

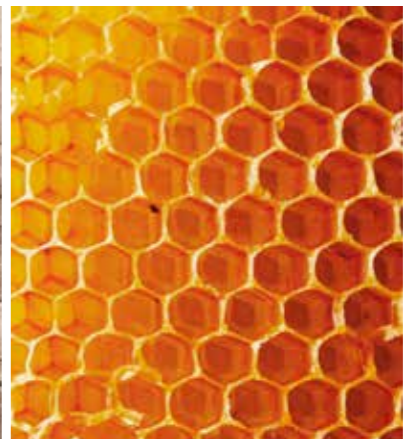
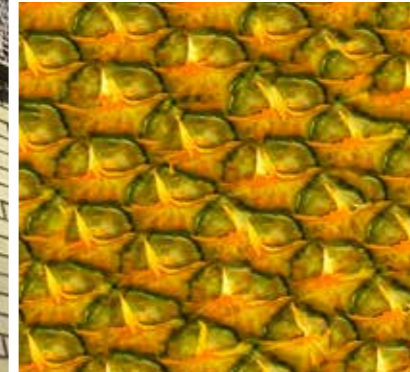
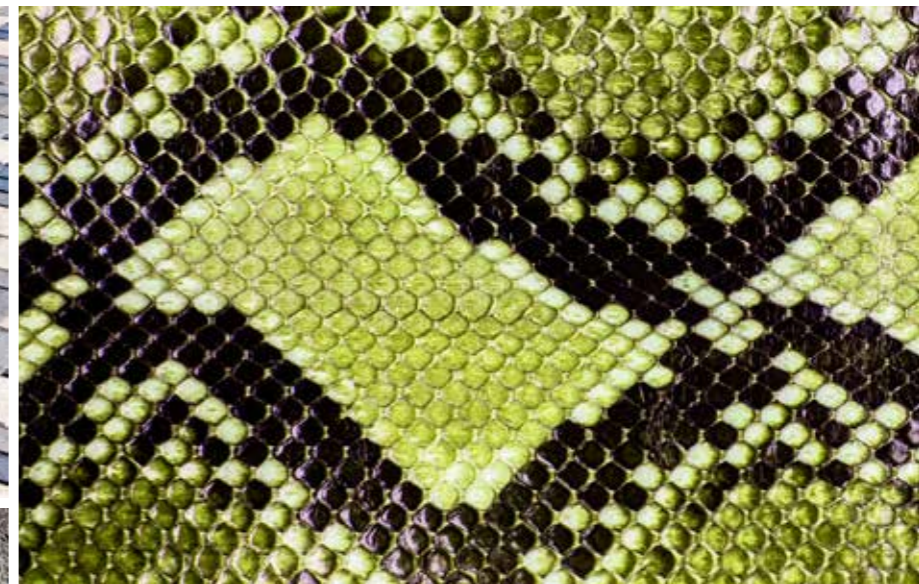


PLAY

WITH marmoleum® modular

THE MODULAR CHOICE COMES NATURAL

Many flooring alternatives already present themselves in a modular format: wood, stone, ceramic, or carpet tiles, all offer various ways to creating floors with an identity of their own. In linoleum you have the same choice but then it comes in a natural way.



PLAY

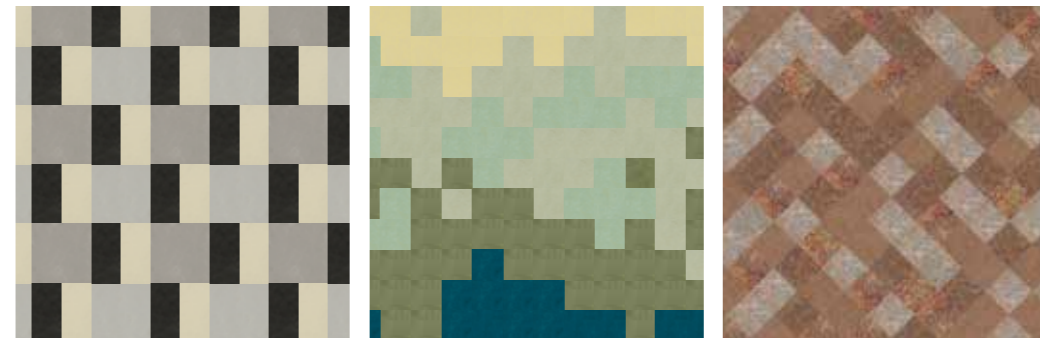
WITH

marmoleum®
modular

SHADE

COLOUR

MARBLE



THIS NEW LINOLEUM COLLECTION FROM FORBO PRESENTS ITSELF IN THREE INDIVIDUAL EXPRESSIONS:

Shade: a collection of concrete structures in cool and warm greys as well as black and white. They are designed to combine amongst each other and the colour range is presented in delicate steps of colour intensity and hues to create natural realistic stone and concrete patterns. The XL tile (75 x 50 cm) allows you to emphasize the material connection of slate and stone.

Colour: a fashionable collection of pastels as well as a modern mix of colourful concrete varieties and a full spectre of bright warm colours liven up the environment. This is the heart of the

collection and the one for which linoleum is most well-known: colour. Colours can be used as focus, accents or as a different way to express the environment.

Marble: classic and contemporary marbled colours that have been created to mix and match to give a special dimension to your floor plan. Make marbled linoleum come to life by combining the exiting marbles that work together like a real natural stone floor. Besides combining within the themes, you can off course also combine each and every colour and design with each other.



PLAY

WITH

marmoleum®
modular

GRIDS ONLINE

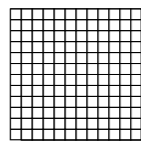
MARMOLEUM MODULAR OFFERS YOU AN ENDLESS CHOICE IN SHAPE, SIZE AND COLOUR TO CHOOSE FROM.

The collection lends itself to play with colours and patterns. We have created a number of grids as examples of the different floor types you can make. The grids can be coloured online and show you how your design transforms into real floors in real environments.

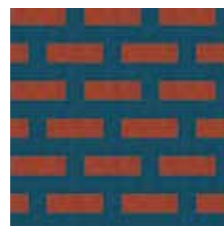
The Forbo floorviewer website offers you plenty of opportunities to play around, combine and create great looking floors.



www.marmoleummodular.com



Grid PC-10



PS-11 (t3203 - t3242)



PS-12 (t3224 - t3238 - t3242 - t3243 - t3244 - t3245 - t3251 - t3563 - t3566 - t3887)

The screenshot shows the Forbo floorviewer website interface. At the top left is the Forbo logo and 'FLOORING SYSTEMS'. The main area is a 3D rendering of a room with a wooden table and chairs, and a floor made of modular tiles in various colors and patterns. A pop-up menu is open over the floor, showing a selection of a 't3255 Marmoleum Modular pine forest 50 cm x 50 cm' tile. The menu includes a 'CHANGE' button, a 'LAYOUT ANGLE' selector with options for 0°, 45°, 90°, and 135°, and buttons for 'View the stories', 'Add to favorites', and 'Share room'. The 'Share room' button includes icons for Pinterest, Twitter, Facebook, and LinkedIn. At the bottom of the interface, there is a 'VIEW STORIES' button and a social media bar with 'Like 17', 'Tweet 17', and 'Pin it' buttons.

PLAY WITH SHADE

marmoleum®
modular



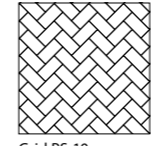
t3701 - t3716 (25 x 50 cm)

A DELICATE AND SENSITIVE BALANCE

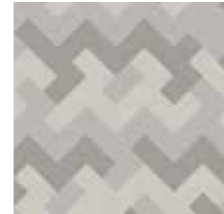
The eight grey tones together with a real black and a linoleum white offer a fine balance in structure, colour and hue, all very closely linked so that a combination of any of the items of this collection immediately creates a subtle nuance in colour...



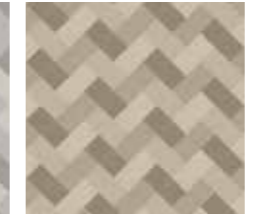
t3711 - t3719 - t3720 - t3721



Grid PS-10



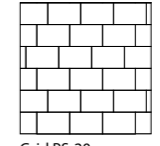
PS-11 (t3716 - t3717 - t3718)



PS-12 (t3711 - t3719 - t3720 - t3721)



t3717 - t3718 - t3719 - t3720



Grid PS-20



PS-21 (t3711 - t3719 - t3720)



PS-22 (t3704 - t3716 - t3717 - t3718)

PLAY

WITH

marmoleum® modular

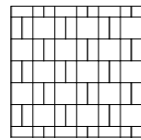
SHADE



t3701 - t3716 (50 x 50 cm)



PS-31 (t3707 - t3717 - t3718 - t3722)



Grid PS-30



PS-32 (t3704 - t3716 - t3717 - t3718)



PS-33 (t3711 - t3719 - t3720 - t3721)

4 cool concrete greys and 4 warm grey tones, complemented with classic 'Black and White' tiles. Available tile formats are: 75x50, 50x25, 50x50, 25x25.

The subtle colour tones in the concrete ranges mixed together create subtle nuances that make your floor come to life when the light captures your floor plan.

marmoleum® modular shade



t3716 | Mercury LRV 50%



t3711 | cloudy sand LRV 49%



t3717 | Neptune LRV 38%



t3719 | Malibu beach LRV 37%



t3722 | stardust LRV 59%



t3718 | Pluto LRV 30%



t3720 | sandy coast LRV 28%



t3707 | black hole LRV 7%



t3704 | satellite LRV 23%



t3721 | Ipanema LRV 23%

Tile sizes
25 x 25 cm
50 x 25 cm
50 x 50 cm



Tile sizes
50 x 25 cm
50 x 50 cm
75 x 50 cm



PLAY

WITH

marmoleum®
modular

COLOUR



t3242 - t3563 - t3883 (25 x 25 cm)

CREATING COLOURFUL, BOLD ENVIRONMENTS, HIGHLIGHTS, ACCENTS OR FLOORPLAN GUIDANCE

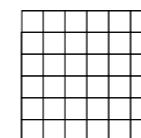
Colourful floors make bold statements, but they can also be a solid base for a designed space. The traditional two tone chequered floor already becomes something very different when a third or a fourth colour is added, when then also an element of randomness is added to the design, the floor looks spectacular.

Highlights and other combinations

The colour collection can also be combined with either Shade or Marble, here elements from the colour collection can provide for subtle highlights or accents within a more plain floor plan.



t3242 - t3255 - t3566 - t3882 - t3884



Grid PC-10



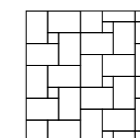
PC-11 (t3203 - t3242)



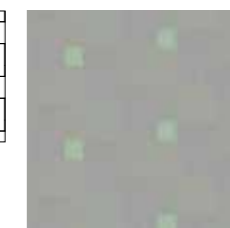
PC-12 (t3224 - t3238 - t3242 - t3243 - t3244 - t3245 - t3251 - t3563 - t3566 - t3887)



PC-21 (t3563 - t3566 - t3712 - t3715) + t3243



Grid PC-20



PC-22 (t3713 - t3714 - t3882)



PC-23 (t3566 - t3712 - t3713 - t3714 - t3715)

PLAY

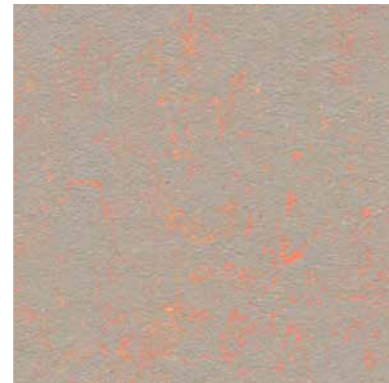
WITH **marmoleum® modular**

COLOUR

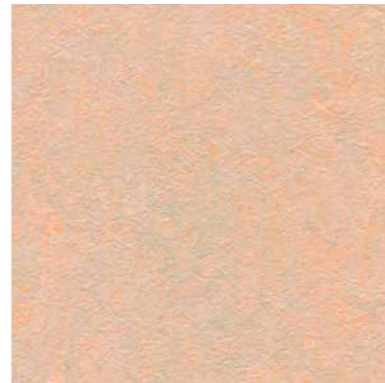


t3238 - t3883 - t3884 (25 x 25 cm)

The colour collection contains four contemporary grey tones that are mixed with a single contrast colour, 4 matching pastel tints and a set of 12 fashionable bright warm colours that make playful and exiting combinations and that liven up the environment.



t3712 | orange shimmer LRV 31%



t3563 | frozen autumn LRV 48%



t3243 | stucco rosso LRV 23%



t3203 | henna LRV 11%



t3127 | Bleeckerstreet LRV 9%



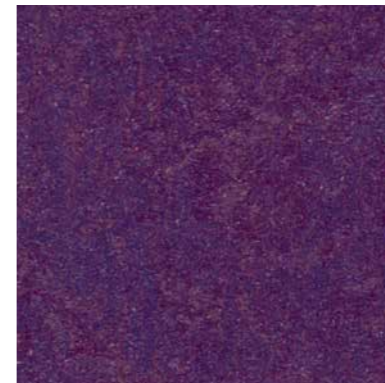
t3713 | purple haze LRV 30%



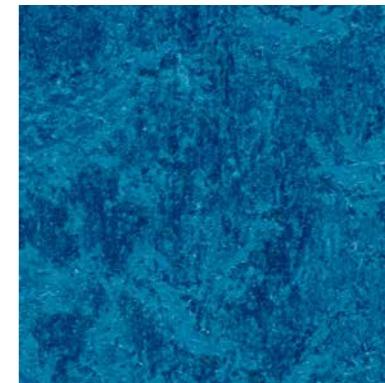
t3887 | moonlight LRV 42%



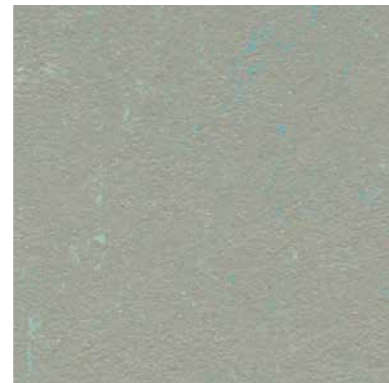
t3245 | summer pudding LRV 12%



t3244 | purple LRV 8%



t3030 | blue LRV 12%



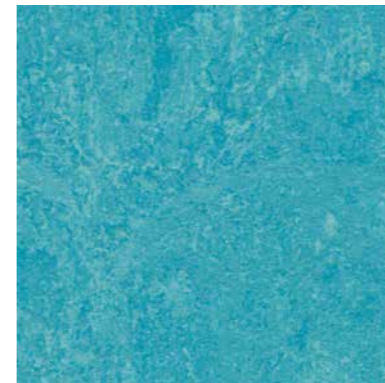
t3714 | blue dew LRV 32%



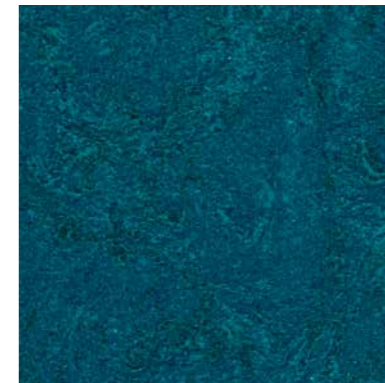
t3884 | frost LRV 45%



t3882 | relaxing lagoon LRV 39%



t3238 | laguna LRV 30%



t3242 | adriatica LRV 9%



t3715 | phosphor glow LRV 34%



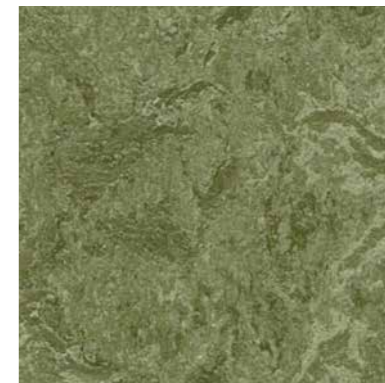
t3566 | silent sulphur LRV 57%



t3251 | lemon zest LRV 52%



t3224 | chartreuse LRV 38%



t3255 | pine forest LRV 17%

Tile sizes
50 x 50 cm
75 x 50 cm



Tile sizes
25 x 25 cm
50 x 50 cm



PLAY WITH MARBLE

marmoleum®
modular



t3048 - t3139 - t3407 (25 x 50 cm)

CLASSIC MARBLE IN MODERN TIMES

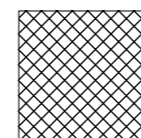
Experience traditional marbled linoleum in a new format. The collection of traditional and contemporary marbled designs combined with the choice of intense and colourful marbles complemented with simple and subtle marble designs really give a natural intense and realistic stone like effect. All of a sudden what looks traditional comes to life in a modern fashion. The marbled floor designs combine particularly well with wooden furniture and sober interiors, ideal for retail or hospitality environments.



PM-11 (t3254 - t3405 - t3423 - t3425)



PM-21 (t3048 - t3136 - t3139 - t3216)



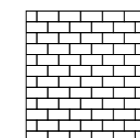
Grid PM-10



PM-12 (t3053 - t3136 - t3146 - t3216)



PM-13 (t3405 - t3407)



Grid PM-20



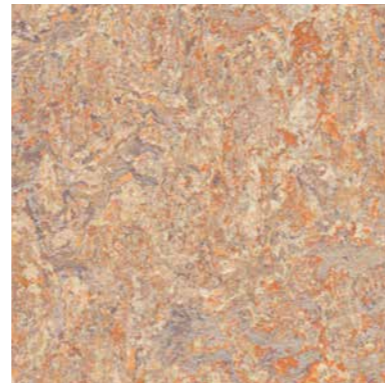
PM-22 (t2713 - t3048 - t3136 - t3146)



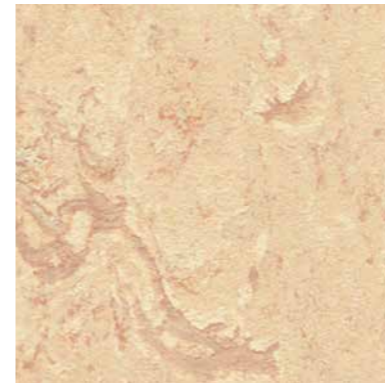
PM-23 (t2713 - t3246 - t3252 - t3254)

PLAY

WITH **marmoleum® modular**
MARBLE



t3407 | donkey island LRV 36%



t2713 | calico LRV 53%



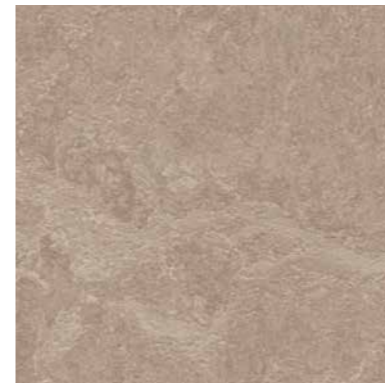
t2707 | barley LRV 49%



t3232 | horse roan LRV 40%



t3405 | Granada LRV 28%



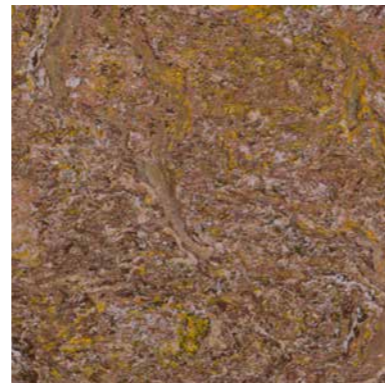
t3252 | sparrow LRV 29%



t3136 | concrete LRV 47%



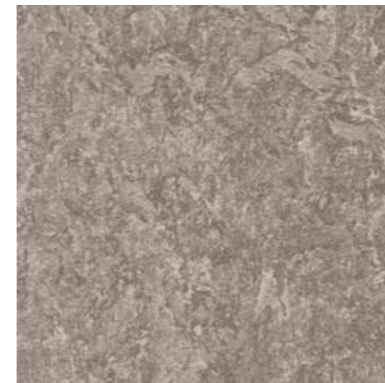
t3216 | moraine LRV 34%



t3425 | autumn leaf LRV 15%



t3246 | shrike LRV 21%



t3146 | serene grey LRV 27%



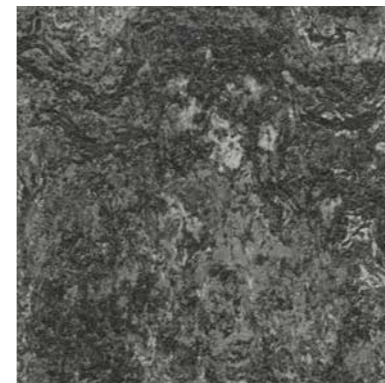
t3053 | dove blue LRV 27%



t3423 | painters palette LRV 24%



t3254 | clay LRV 17%

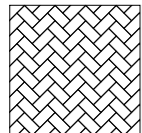


t3048 | graphite LRV 14%



t3139 | lava LRV 9%

PM-31 (t3053 - t3139)



Grid PM-30



PM-32 (t3048 - t3136 - t3146)



PM-33 (t3216 - t3232)

Tile sizes
50 x 25 cm
50 x 50 cm



A collection of 16 classic and contemporary marbled colours that have been created to mix and match to give a special dimension to your floor plan.

MARMOLEUM NATURAL TILES

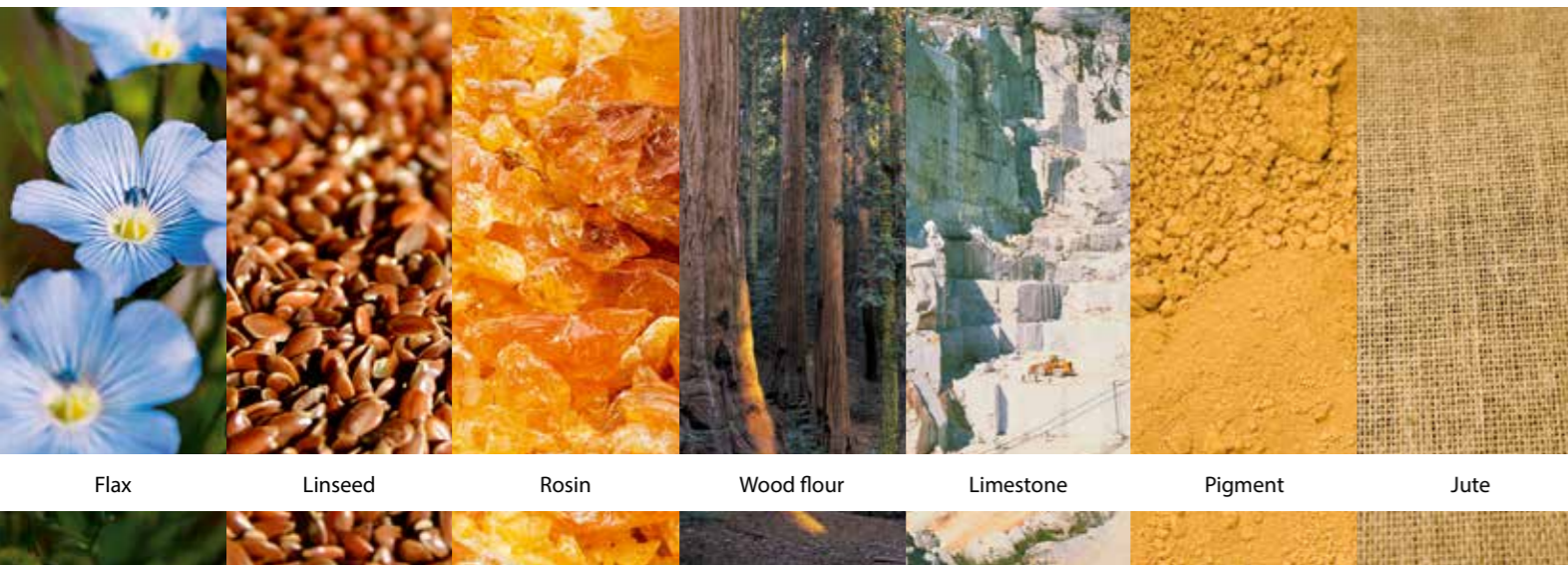
MARMOLEUM MODULAR IS A PURE LINOLEUM TILE, CREATED FROM LINSEED OIL, ROSIN, WOOD FLOUR AND LIMESTONE

Raw materials that are either abundantly available or rapidly renewable, with annual crops or grow back schemes. Marmoleum Modular is manufactured in Europe in factories running on green electricity. The product has a cradle to cradle certification.

A unique product

Marmoleum modular is unique in that each shape and form is cut separately from the base material. Angles

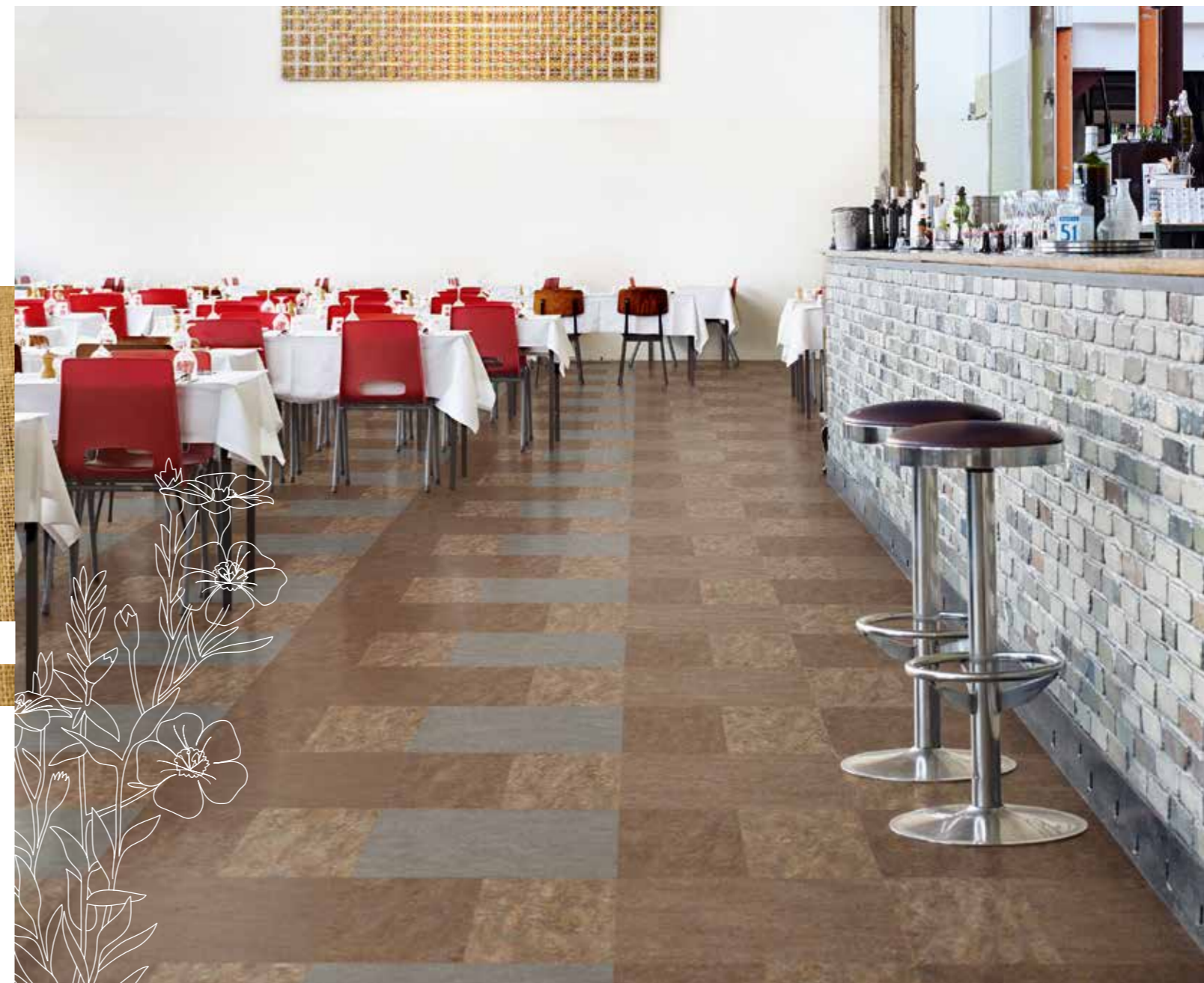
of the tiles are 'undercut' in order to provide a perfect joint that requires no welding and always provides for a seamless fit. The polyester backing makes the product very dimensionally stable, even when installed in larger areas. Modular Marmoleum is treated with Topshield2, a two layer acrylic water based finish, that avoids scratching, staining and soiling, and takes care of easy cleaning and excellent appearance retention of the floor over time.



Flax Linseed Rosin Wood flour Limestone Pigment Jute

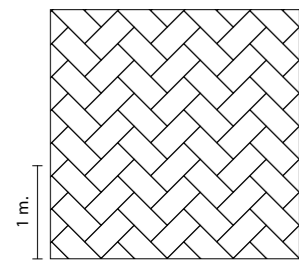
A SUSTAINABLE CHOICE, READY FOR USE

Marmoleum modular is a sustainable alternative to all designer modular floors available in the market today. With the new Topshield2 finish the floor is ready for use right away after installation. The modular tiles are easy to install, require a minimal cleaning and maintenance regime and can be recycled after its useful life.



t3146 - t3254 - t3423 - t3425 (50 x 50 + 25 x 25 cm)

EXPLANATION OF THE **SHADE** FLOORPLANS



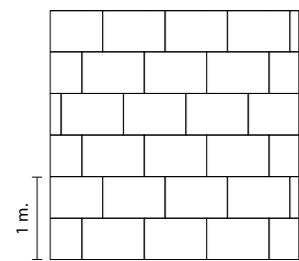
PS-10



PS-11
50 x 25 cm: t3716 33,3% t3717 33,3%
t3718 33,3%



PS-12
50 x 25 cm: t3711 25% t3719 25%
t3720 25% t3721 25%



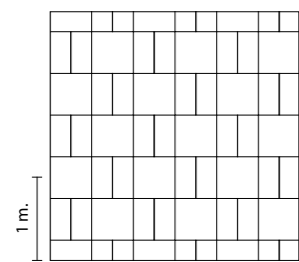
PS-20



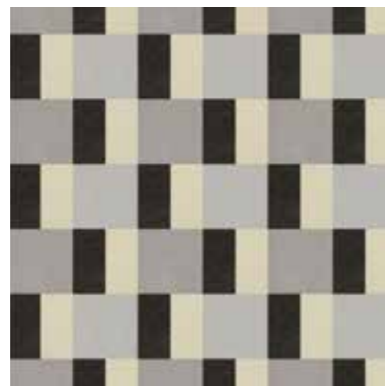
PS-21
75 x 50 cm: t3711 33,3% t3719 33,3%
t3720 33,3%



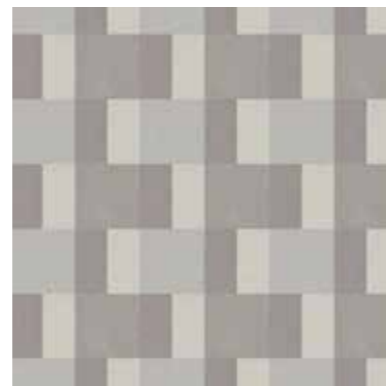
PS-22
75 x 50 cm: t3704 25% t3716 25%
t3717 25% t3718 25%



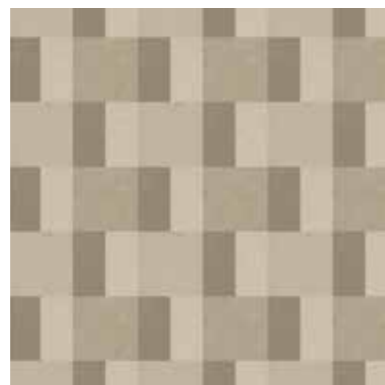
PS-30



PS-31
50 x 25 cm: t3707 25% t3722 25%
50 x 50 cm: t3717 25% t3718 25%

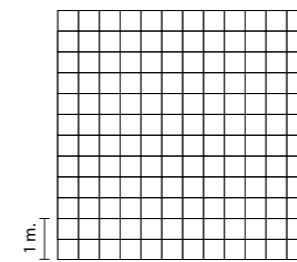


PS-32
50 x 25 cm: t3704 25% t3716 25%
50 x 50 cm: t3717 25% t3718 25%

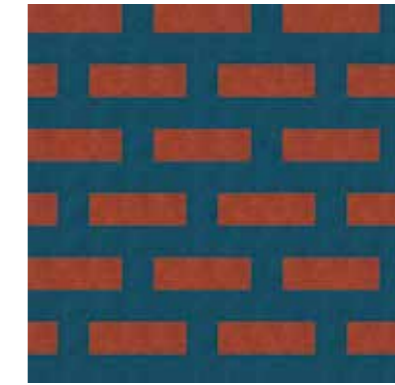


PS-33
50 x 25 cm: t3711 25% t3721 25%
50 x 50 cm: t3719 25% t3720 25%

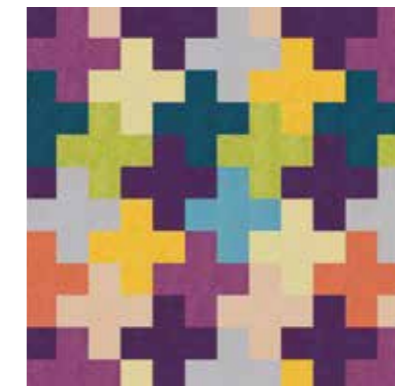
EXPLANATION OF THE **COLOUR** FLOORPLANS



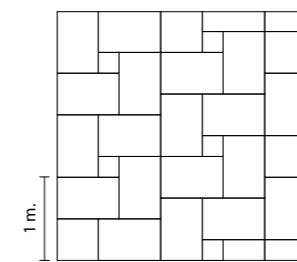
PC-10



PC-11
50 x 50 cm: t3203 37,5% t3242 62,5%



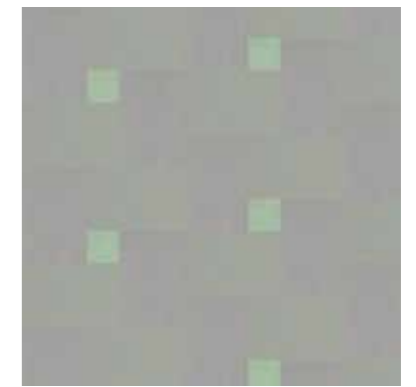
PC-12
50 x 50 cm: t3224 10% t3238 10% t3242 10% t3243 10% t3244 10%
t3245 10% t3251 10% t3563 10% t3566 10% t3887 10%



PC-20



PC-21
25 x 25 cm: t3563 5% t3566 5%
75 x 50 cm: t3712 45% t3715 45%

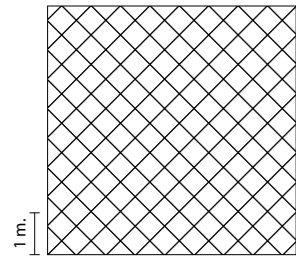


PC-22
25 x 25 cm: t3882 10%
75 x 50 cm: t3713 45% t3714 45%



PC-23
25 x 25 cm: t3566 10%
75 x 50 cm: t3712 22,5% t3713 22,5%
t3714 22,5% t3715 22,5%

EXPLANATION OF THE MARBLE FLOORPLANS



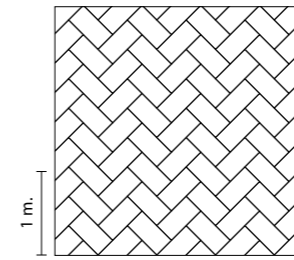
PM-10



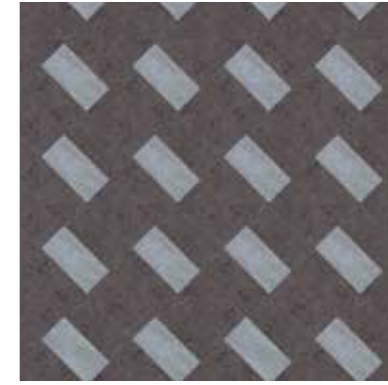
PM-11
50 x 50 cm: t3254 25% t3405 25%
t3423 25% t3425 25%



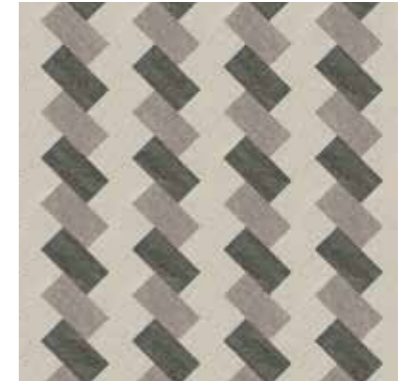
PM-12
50 x 50 cm: t3053 25% t3136 25%
t3146 25% t3216 25%



PM-30



PM-31
50 x 25 cm: t3053 25% t3139 75%



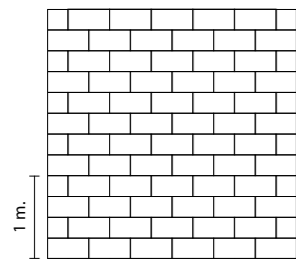
PM-32
50 x 25 cm: t3048 25% t3136 50%
t3146 25%



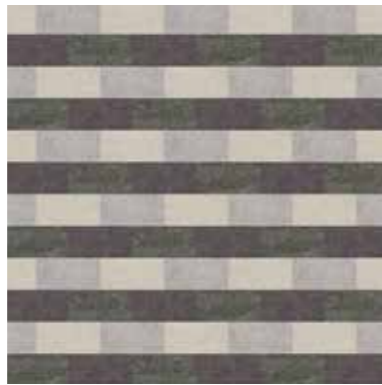
PM-13
50 x 50 cm: t3405 50% t3407 50%



PM-33
50 x 25 cm: t3216 50% t3232 50%



PM-20



PM-21
50 x 25 cm: t3048 25% t3136 25%
t3139 25% t3216 25%



PM-22
50 x 25 cm: t2713 25% t3048 25%
t3136 25% t3146 25%



PM-23
50 x 25 cm: t2713 25% t3246 25%
t3252 25% t3254 25%

MARMOLEUM MODULAR - LRV & NCS

Play with shade

product	dessin name	LRV %	NCS
T3704	satellite	23	NCS S 5502 - Y
T3707	black hole	7	NCS S 8500 - N
T3711	cloudy sand	49	NCS S 2010 - Y
T3716	Mercury	50	NCS S 1502 - Y
T3717	Neptune	38	NCS S 2502 - Y
T3718	Pluto	30	NCS S 3502 - Y
T3719	Malibu beach	37	NCS S 3010 - Y10R
T3720	sandy coast	28	NCS S 4010 - Y10R
T3721	Ipanema	23	NCS S 5010 - Y10R
T3722	stardust	59	NCS S 1010 - G80Y

Play with colour

product	dessin name	LRV %	NCS
t3030	blue	12	NCS S 5030 - R90B
t3127	Bleeckerstreet	9	NCS S 2570-R
t3203	henna	11	NCS S 5040-Y80R
t3224	chartreuse	38	NCS S 2050-G60Y
t3238	laguna	30	NCS S 2040 - B10G
t3242	adriatica	9	NCS S 5540 - B10G
t3243	stucco rosso	23	NCS S 2050 - Y70R
t3244	purple	8	NCS S 7020 - R50B
t3245	summer pudding	12	NCS S 4040 - R30B
t3251	lemon zest	52	NCS S 1050 - Y10R
t3255	pine forest	17	NCS S 6020 - G50Y
t3563	frozen autumn	48	NCS S 2010 - Y40R
t3566	silent sulphur	57	NCS S 2020 - G90Y
t3712	orange shimmer	31	NCS S 4502 - Y / NCS S 1050 - Y50R
t3713	purple haze	30	NCS S 4005 - G20Y / NCS S 2020 - R50B
t3714	blue dew	32	NCS S 4005 - G20Y / NCS S 2040 - B10G
t3715	phosphor glow	34	NCS S 4010 - Y10R / NCS S 3050 - G90Y
t3882	relaxing lagoon	39	NCS S 3020 - G10Y
t3887	moonlight	42	NCS S 2005 - G50Y
t3884	frost	45	NCS S 3010 - G40Y

Play with marble

product	dessin name	LRV %	NCS
t2707	barley	49	NCS S 1515 - Y30R
t2713	calico	53	NCS S 2010 - Y20R
t3048	graphite	14	NCS S 7502 - Y
t3053	dove blue	27	NCS S 4005 - B80G
t3136	concrete	47	NCS S 3005-G80Y
t3139	lava	9	NCS S 8000-N
t3146	serene grey	27	NCS S 4502-Y
t3216	moraine	34	NCS S 4005-G80Y
t3232	horse roan	40	NCS S 3010-Y20R
t3246	shrike	21	NCS S 6005 - Y20R
t3252	sparrow	29	NCS S 4010 - Y10R
t3254	clay	17	NCS S 6010 - Y30R
t3405	Granada	28	NCS S 5005 - Y20R
t3407	donkey island	36	NCS S 3010 - Y30R
t3423	painters palette	24	NCS S 4020 - Y20R
t3425	autumn leaf	15	NCS S 6010 - Y30R

OTHER FORBO LINOLEUM COLLECTIONS



marmoleum®



The Unexpected Nature of linoleum



cork linoleum®



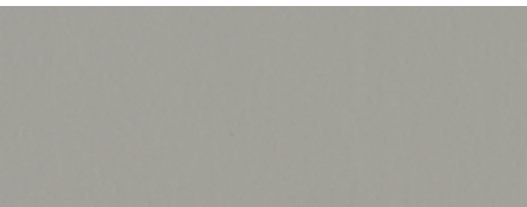
marmoleum®_{sport}



bulletin board®



furniture linoleum



Marmoleum

Take a fascinating look into the world of colours and designs. Marmoleum was created to complement and enhance the architecture interiors of today's and tomorrow's buildings. Marmoleum is a natural floor, created from all natural ingredients. It is the most sustainable floor in the resilient flooring category. All Marmoleum floors include Topshield2, a double UV cured finish delivering floor performance in the real world, that result in the lowest cost of ownership over its life time.

The Unexpected Nature of Linoleum

This collection, based on modern design trends, is inspired by the natural phenomena around the world that make our planet special. Volcanic formations, tropical forests and lagoons as well as salt and ice formations have all inspired this collection of subtle, natural designs. Both the marbled and striped collections have unconventional colour combinations that are perfect for creating hugely inspiring floors that form serene environments with a natural touch.

Cork Linoleum

Forbo Marmoleum is created by combining linseed and rosin with wood flour and limestone. For Cork linoleum, the wood flour component is replaced by finely ground cork particles. Cork enhances the shock absorbent quality of floors and gives warmth under foot. This makes Cork linoleum the ideal surface for therapy rooms and rest areas in day care centres. Cork linoleum is available in a range of natural colours ranging from sand and ochre to stone red and a selection of subtle greys.

Marmoleum Sport

This 3.2 and 4.0mm Marmoleum is specially created for indoor multi-sports facilities. Sport offers a genuine environmentally friendly alternative to any PVC or Rubber sports floor offer. When installed on official sprung-wood subfloor constructions, it complies with the requirements of the international indoor sports associations for indentation, bounce and slip characteristics. For multi-sport environments or school gyms, Marmoleum Sport can be installed with a recycled rubber shock absorbent underlay. Markers lines and appropriate finish requirements can be applied easily.

Bulletin board

From the floor to the wall, Forbo Bulletin board is a linoleum surfacing material that's ideal for walls or vertical surfaces such as notice or pin-boards. It's also a functional aesthetic finish for walls, doors or cabinets. Bulletin board is also available in framed formats. Its bacteriostatic properties make it ideal for patient rooms and nurses' quarters.

Furniture Linoleum

Where Marmoleum is praised for its sustainable profile and functional performance, Furniture Linoleum is heralded for its aesthetic and tactile qualities. This finely ground, high-quality linoleum is a designer's dream when it comes to creating matte, smooth, hand-warm finishes to tabletops, cabinets and other furniture. The decorative surface can be easily cleaned, and, like leather, develops a beautiful natural patina over time. Forbo Furniture Linoleum is available in a range of 24 four solid, uni colours ranging from coal black to a warm white and the whole spectrum of colours in between.

MORE FORBO FLOORING COLLECTIONS



Luxury vinyl tiles

Project Vinyl

Flotex floxed flooring

Textile flooring

Entrance flooring

Luxury Vinyl Tiles

Luxury Vinyl Tiles have matured into a new flooring category that is readily winning ground in all kinds of market segments. Whether it is retail, leisure, hospitality, offices or education and healthcare facilities, LVT is recognized as an easy to install, easy to maintain high performance floor covering that has the look and feel of its natural counterparts, be it wood, stone or any abstract material. Forbo's Allura LVT will last for years to come, with a unique design that has been created from the natural original to the refinement of the grain and texture that creates a lifelike copy, which in itself can claim to be an original.

Project Vinyl

Next to Luxury vinyl tiles Forbo offers a range of sheet vinyl flooring with specific technical features such as slip resistant flooring, conductive flooring, acoustic floor coverings and general purpose vinyl floors that come in a wide range of colours and designs. In some cases sheet flooring is chosen as alternative to LVT, at Forbo we have taken care that our collections are matching in colour and design to make combinations of various products possible within one installation.

Flotex floxed flooring

Flotex combines the practicality of a resilient flooring with the slip resistant and acoustic properties usually associated with textiles. Completely waterproof, Flotex is the only truly washable textile floor covering available today. The result is a warm, comfortable, hygienic floor covering that offers constant protection against bacteria and dust mites, and which is suitable for any commercial specification.

Textile flooring

Forbo's textile flooring collection is made up of high quality tufted tiles and a comprehensive range of needle-punched carpets. Our tufted carpet tiles offer the kind of flexibility in design and installation that the contemporary office demands, while our robust, hard-wearing needlefelt textiles are ideal for creating a tranquil and harmonious atmosphere in high-traffic situations.

Entrance flooring

Creating better environments starts at the entrance of any building. To avoid water, sand, mud and gravel being carried into the building a proper entrance floor is a good line of defense. Coral entrance floors are created to absorb moisture and scrape dirt of shoes and wheel that find their way into a building. Entrance floors can take care of lower cleaning and maintenance costs and give the floors inside the building their appearance retention.

TECHNICAL SPECIFICATIONS

Marmoleum Modular meets the requirements of EN-ISO 24011

	Total thickness	EN-ISO 24346	2.50 mm			
	Domestic: heavy	EN-ISO 10874	Class 23			
	Commercial: very heavy	EN-ISO 10874	Class 34			
	Light Industrial: heavy	EN-ISO 10874	Class 43			
	Dimensions (length x width)	EN-ISO 24342	25 x 25 cm	50 x 25 cm	50 x 50 cm	75 x 50 cm
	Squareness and straightness	EN-ISO 24342	≤ 0.25 mm	≤ 0.35 mm	≤ 0.35 mm	≤ 0.35 mm
	Indentation residual	EN-ISO 24343-1	≤ 0.15 mm			
	Castor chair continuous use	EN 425	Suitable for office chairs with castors			
	Light fastness	EN-ISO 105-B02	Method 3: blue scale minimum 6			
	Resistance to chemicals	EN-ISO 26987	Resistant to diluted acids, oils, fats and to conventional solvents. Not resistant to prolonged exposure to alkalis			
	Bacteriostatic properties		Marmoleum has natural bacteriostatic properties, which are confirmed by independent laboratories, even against the bacteria MRSA			
	Cigarette resistance	EN 1399	Marks left on linoleum as a result of stubbed-out cigarettes can be removed			
	Slip resistance	DIN 51130	R9			
	Acoustical impact sound reduction	EN ISO 717-2	≤ 5 dB			
	Life Cycle Assessment		LCA is the foundation for securing the lowest environmental impact			

EN 14041
CE
0200203-DoP-306

Marmoleum meets the requirements of EN 14041

	Reaction to fire	EN 13501-1	Cfl-s1		
	Slip resistance	EN 13893	DS: ≥ 0.30		
	Body voltage	EN 1815	< 2 kV		
	Thermal conductivity	EN 12524	0.17 W/m-K		

Forbo Flooring Systems is part of the Forbo Group, a global leader in flooring, bonding and movement systems, and offers a full range of flooring products for both commercial and residential markets. High quality linoleum, vinyl, textile, flocked and entrance flooring products combine functionality, colour and design, offering you total flooring solutions for any environment.



Baltic States

Forbo Flooring
K. Ulmana gatve 5
Riga, LV-1004, Latvia
Tel.: +371 670 66 116
Fax: +371 670 66 117
E-mail: info.lv@forbo.com
www.forbo-flooring.lv
www.forbo-flooring-ee.com
www.forbo-flooring.lt

China

Forbo Shanghai Co., Ltd.
Room 2302, Golden Magnolia
Plaza West Building
No.1 Da Pu Road
Shanghai 200023
China
Tel: +86(21)64734586
Fax: +86(21)64734757
www.forbo-flooring.com.cn

Czech & Slovak Republic

Forbo s.r.o.
Novodvorská 994
142 21 Praha 4
Česká republika
Tel.: + 420 239 043 011
Fax: + 420 239 043 012
E-mail: info@forbo.cz
www.forbo-flooring.cz

Hong Kong & Macau

Flooring Systems
Forbo Flooring
E-mail: info.flooring.hk@forbo.com
www.forbo-flooring.com

Korea

Forbo Flooring Korea
#207 Koryo B/D
88-7 Nonhyun-dong
Kangnam-gu, 135-818
Seoul, Korea
Tel: 82 2 3443 0644
Fax: 82 2 3443 0284
E-mail: info.flooring.kr@forbo.com
www.forbo-flooring.co.kr

Serbia, Croatia, Bulgaria, Bosnia and Herzegovina, Slovenia, Macedonia, Montenegro, Albania

Mobile: + 381 63 617 716
Email: info.flooring.see@forbo.com

Taiwan

Flooring Systems
Forbo Flooring
E-mail: info.flooring.tw@forbo.com
www.forbo-flooring.com

Other countries

Forbo Flooring B.V.
P.O. Box 13
1560 AA Krommenie
The Netherlands
T: +31 75 647 74 77
F: +31 75 647 77 01
contact@forbo.com
www.forbo-flooring.com



forbo

FLOORING SYSTEMS