

coral[®] entrance flooring



creating better environments

forbo

FLOORING SYSTEMS



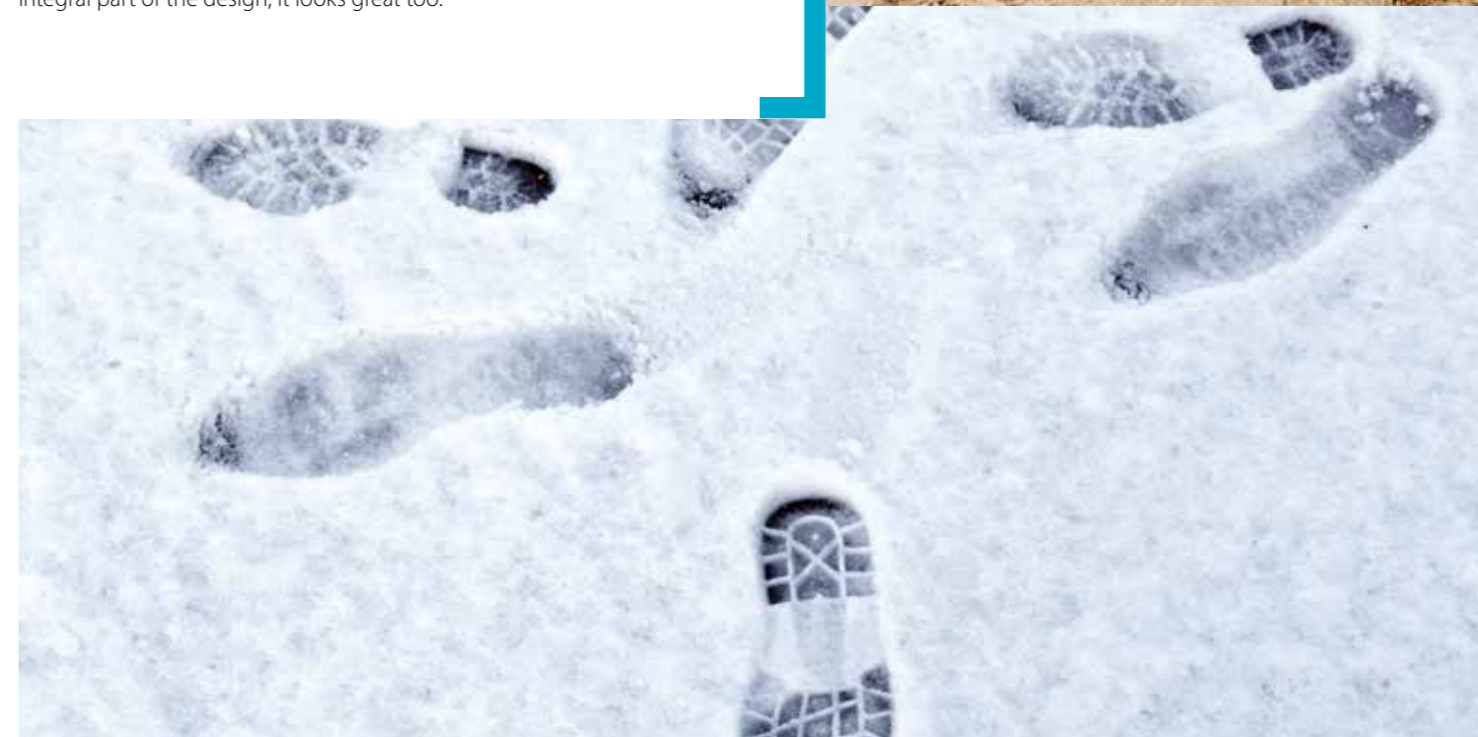
Every doorway needs Coral

You know that feeling of pride and pleasure that comes from walking on a newly installed floor? And the disappointment as it becomes dirty and worn? Now there's a way to extend the former and delay the latter. To keep your floor looking clean and presentable year after year, and your visitors and employees safe from harm. It's called Forbo Coral entrance flooring and this brochure will tell you all about it.

- 4. **Coral and protection**
Coral and slippery situations
- 5. **Coral and lower cleaning costs**
Coral and creating better environments
- 6. **Design, meets functionality**
- 7. **Entrance flooring starts outside and moves inside**
- 9. **Coral Classic**
- 13. **Coral Welcome**
- 17. **Coral Brush pure**
- 21. **Coral Brush blend**
- 25. **Coral Duo**
- 29. **Coral Grip**
- 32. **Coral Logo**
- 34. **Cleaning and maintenance**
- 35. **More flooring solutions**

... to keep the world outside, outside

Coral entrance flooring delivers superior performance in even the toughest environments. Whether it's facing down rain, snow, sand, or soil, Coral keeps the outside from getting inside. And forming an integral part of the design, it looks great too.



Protection for your floor, safety for your visitors, style for your interior

Every day our shoes move huge quantities of dirt and water from one place to another. Dirt and water that walks in with us when we enter a building, creating trails and slippery, dirty floors that rapidly make a pristine interior grubby and unattractive.

But just as important as the visual impact is the structural damage dirt and moisture cause to carpeting, vinyl and linoleum. Plus the health and safety hazards they create.

Every entrance in every building needs protecting against the elements outside. And Coral is the best there is. Why? Because Coral is effective, stylish, long-lasting and fire retardant. And because it's easy to integrate it into any floor plan. The result is a dirt and moisture barrier that combines functionality, safety and style.



Every entrance and exit is also a fire exit. All Coral products comply with the highest fire regulations Bfl-s1

94%

of walked in dirt and moisture can be kept out with Coral

Prevent slippery situations

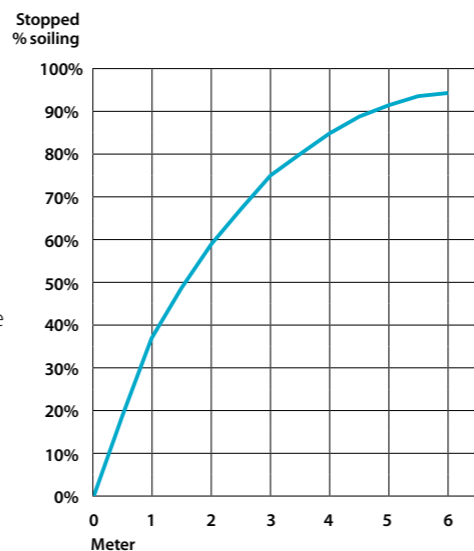
Do you slow down or stop to wipe your feet when you walk into an office, shopping centre or other public space? Chances are you don't. And if you do, you are one of the few. Most of us just stride on in.

Which is why it makes sense to employ an entrance zone. TÜV Rheinland has proved that equipping an entrance with a six metre walking depth of Coral entrance flooring is enough to keep up

to 94% of all walked in dirt and moisture out of your building.

Think about your entrance in terms of preventing soiling and slippery underfoot conditions and you can:

- a) cut cleaning costs significantly, and;
- b) reduce the risk of costly claims from people slipping and hurting themselves as they enter or exit.



Lower your cleaning costs and prevent your floor being damaged

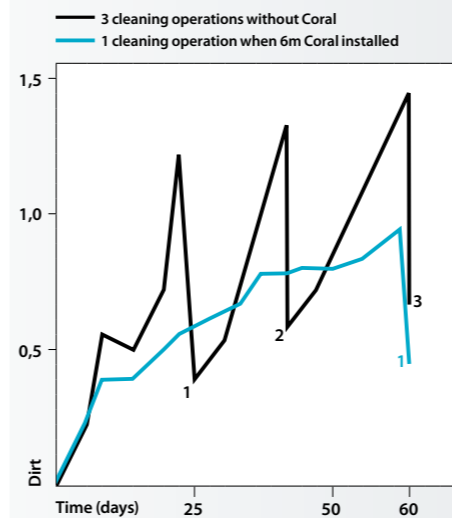
The amount of dirt and moisture that people walk into a building is bad news for any floor. And rectifying the effects costs money. Often, a lot of money. Cleaning Research International has proven that maintenance is 86% of the total life cycle

cost of your floor covering. Maintenance which is caused for 90% by walked in dirt and moisture. Coral entrance mats help you to reduce the walked in dirt and moisture, thus reducing the maintenance cost of your floor covering.

A well designed entrance flooring system incorporating a Coral clean-off zone is a highly effective way to cut your future costs. By stopping up to 94% of walked-in dirt and moisture from reaching your main floor coverings, Forbo Coral can reduce your cleaning bills by up to 65% and prolong the life of your floor finishes and coverings. And the bigger the area fitted with Forbo Coral entrance flooring, the bigger the benefit.

65%

reduction in cleaning costs



Create a better environment with entrance flooring



The major part of our collection is produced with Econyl®

Using Forbo Coral cuts cleaning costs. And it has a further benefit too: Coral reduces the use of water and detergents, which is obviously good for the environment. In addition, we use Econyl® regenerated nylon yarns in most of our products. Our search for new ways to reduce our environmental impact has led us to work very closely with forward thinking suppliers who are able to incorporate ever higher levels of recycled content in their materials. The use of Econyl® yarn is an excellent example. Econyl®

is made using reprocessed industrial waste and post consumer waste. Abandoned fishing nets are one of the unlikely sources of unwanted waste material which go to make Econyl®. Using Econyl® is a way to reduce existing waste, avoid additional manufacturing-related pollution, and keep the consumption of natural resources and energy to a minimum.

Design, meets functionality

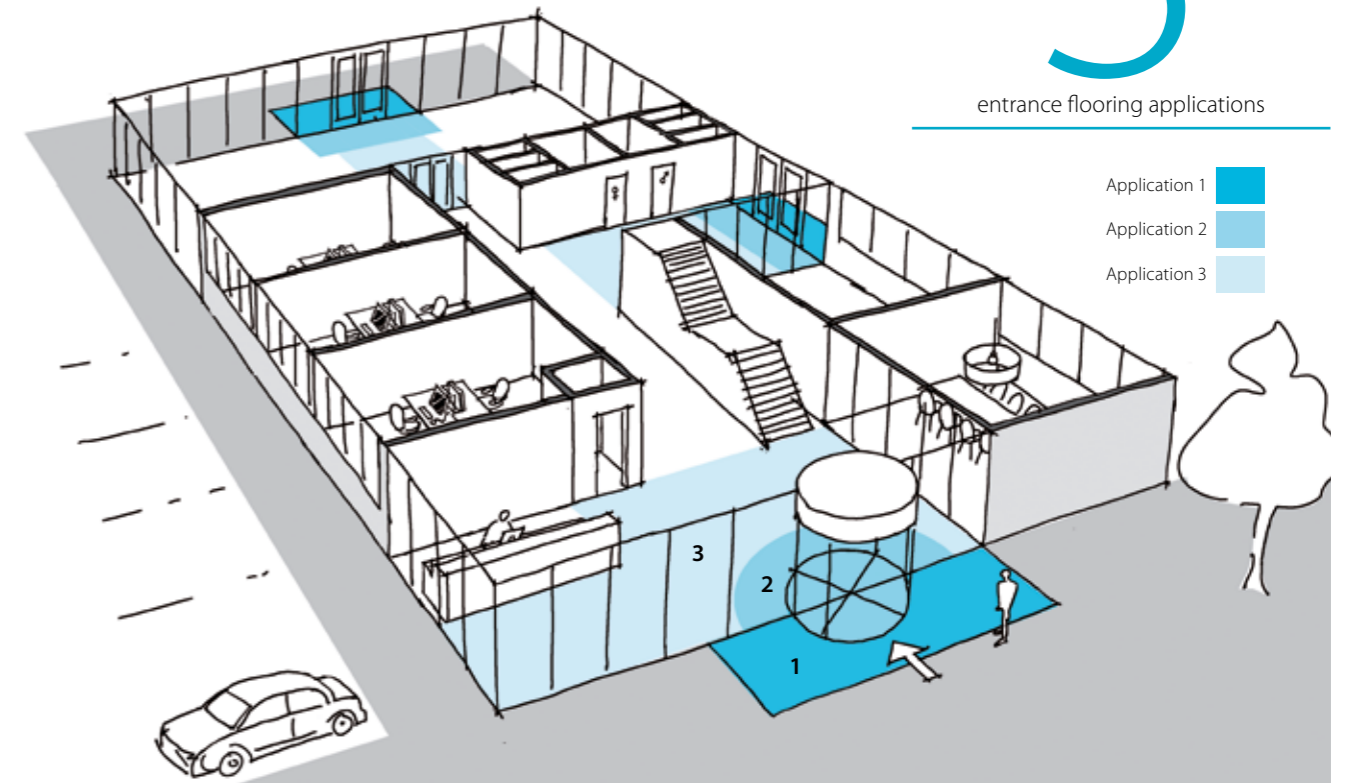
Some people say you can't have design with functionality. Coral proves you can. All Coral collections reflect the latest directions in terms of colours, visuals and textures. All Coral floors complement both resilient and textile flooring solutions and can be used to create a visual highlight or allowed to merge into the overall look and feel.

Done well, entrance flooring can be whatever you want it to be, from stylishly yet unobtrusively functional to a bold statement about your brand, service, or product. The red carpet treatment for all who enter? A way to guide people to where they want to go? A brand statement that sets your logo centre stage? They're all possible. The choice is yours.

Entrance flooring starts outside and moves inside

3

entrance flooring applications



- Application 1 ■
- Application 2 ■
- Application 3 ■



If you really want to keep your building clean and safe, it's not enough to throw down a mat at the door. Creating a good entrance flooring involves thinking about

footfall – the number of people walking in and out in a given period – and walking routes (the directions they take once inside) and applying that information in the design

of the entrance area. One of the best ways to plan an entrance flooring system is to think in applications:

Application 1: Outside use

Any matting placed outside the building entrance is the first line of defence against foot-borne soil, scraping the coarsest dirt from the soles of shoes before they cross the threshold.

Application 2: Inside use

Moving inside, the next line of defence, is used to remove foot-borne moisture and finer dirt particles.

Application 3: Other circulation areas

Other areas in the building also suffer from soil and moisture; reception areas, corridors, walkways to other parts of the building, elevators, staircase exits, etc. All these areas will be prone to residual soiling and will benefit highly from a purposely designed Coral entrance mat to absorb this soiling. This will prevent increased local frequent and thorough vacuuming.

	Application	moisture removal	dirt removal	ECO	33
coral [®] grip MD	1 + 2	●○○○	●●●●	●○○○	X
coral [®] grip HD	1 + 2	●○○○	●●●●	●○○○	X
coral [®] duo	2	●●●●	●●●●	●●○○	X
coral [®] brush pure	2 + 3	●●●●	●●●○	●●●○	X
coral [®] brush blend	2 + 3	●●●●	●●●○	●●●○	X
coral [®] welcome	2 + 3	●●●●	●●○○	●●●●	X
coral [®] classic	2 + 3	●●●●	●●○○	●○○○	X
coral [®] logo	2 + 3	●●●●	●●○○	●○○○	X

coral[®] classic

- Maximum moisture absorption and scrapes off dirt
- Choice of attractive contemporary colours
- Maximum colour fastness
- Complies with the highest fire class standard: B_{f1}-s1
- Suitable for the heaviest commercial and light industrial use
- Ideal for inside entrance and circulation areas

The ultimate moisture absorber

Research shows that taking just two steps on Coral Classic's moisture absorbing yarns is enough to absorb half of the foot-borne moisture that would otherwise be carried inside on the soles of people's shoes.

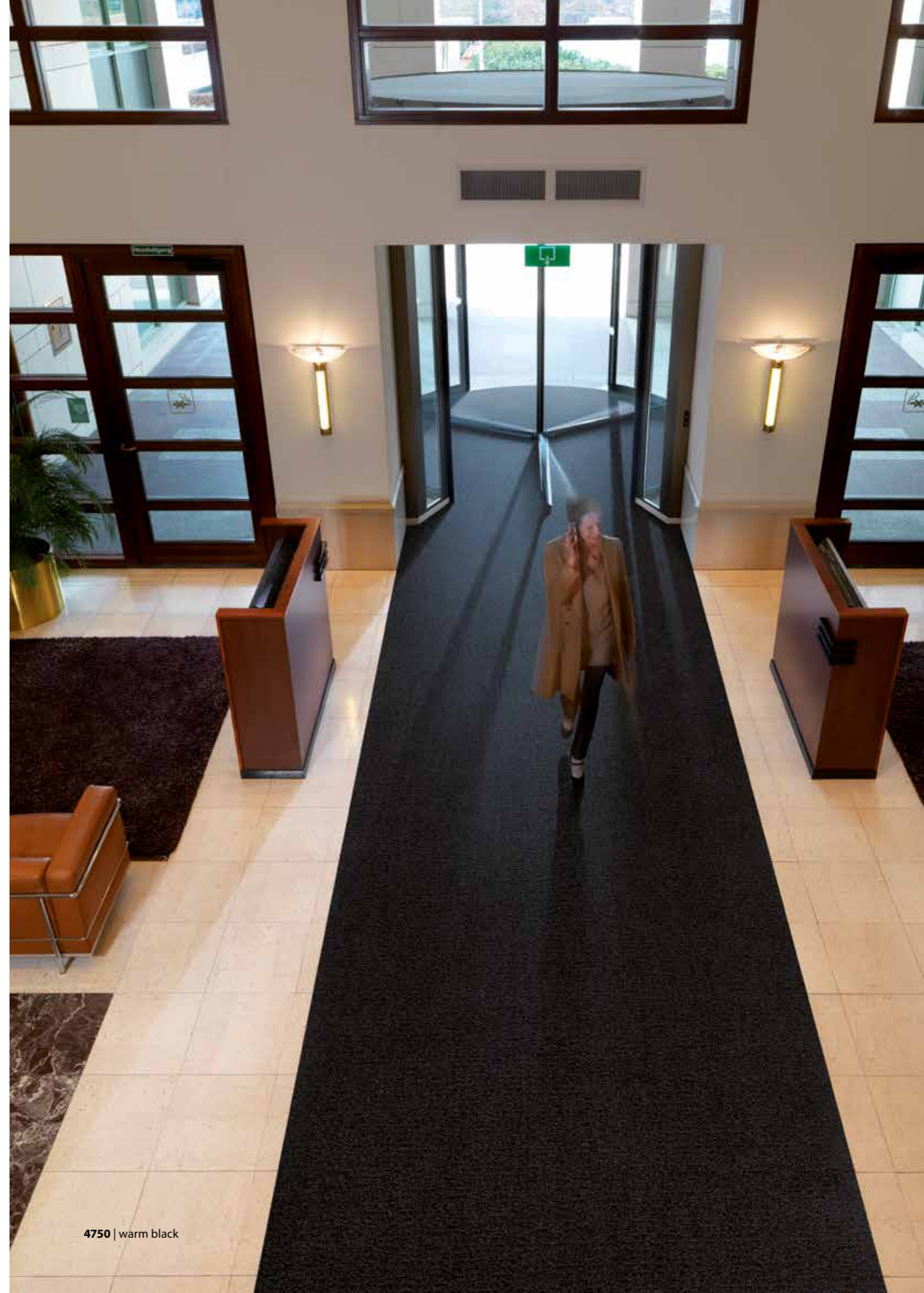
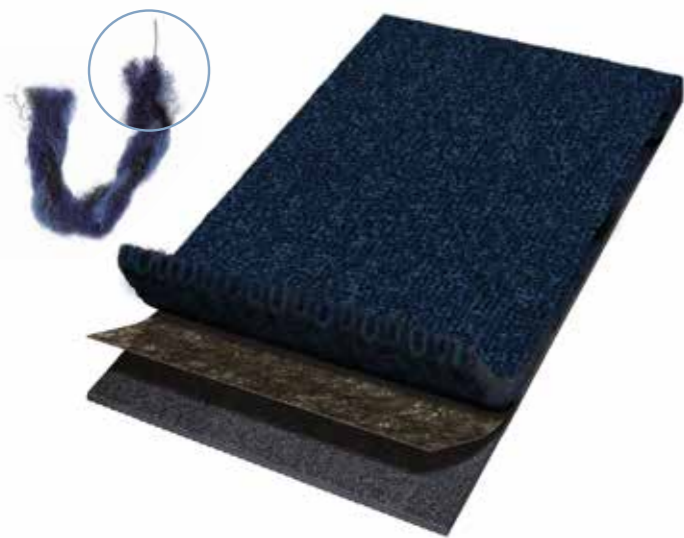
A few steps more and your feet are as dry as possible. This has clear benefits. First, the floor coverings further inside stay cleaner,

longer. Second, resilient floors like vinyl, linoleum, wood and concrete are less likely to become slippery and dangerous.

Independent tests by TÜV Rheinland have shown that Coral Classic will maintain its performance – and appearance – for years to come thanks to the use of solid-colour

yarns that guarantee its appearance throughout its lifespan.

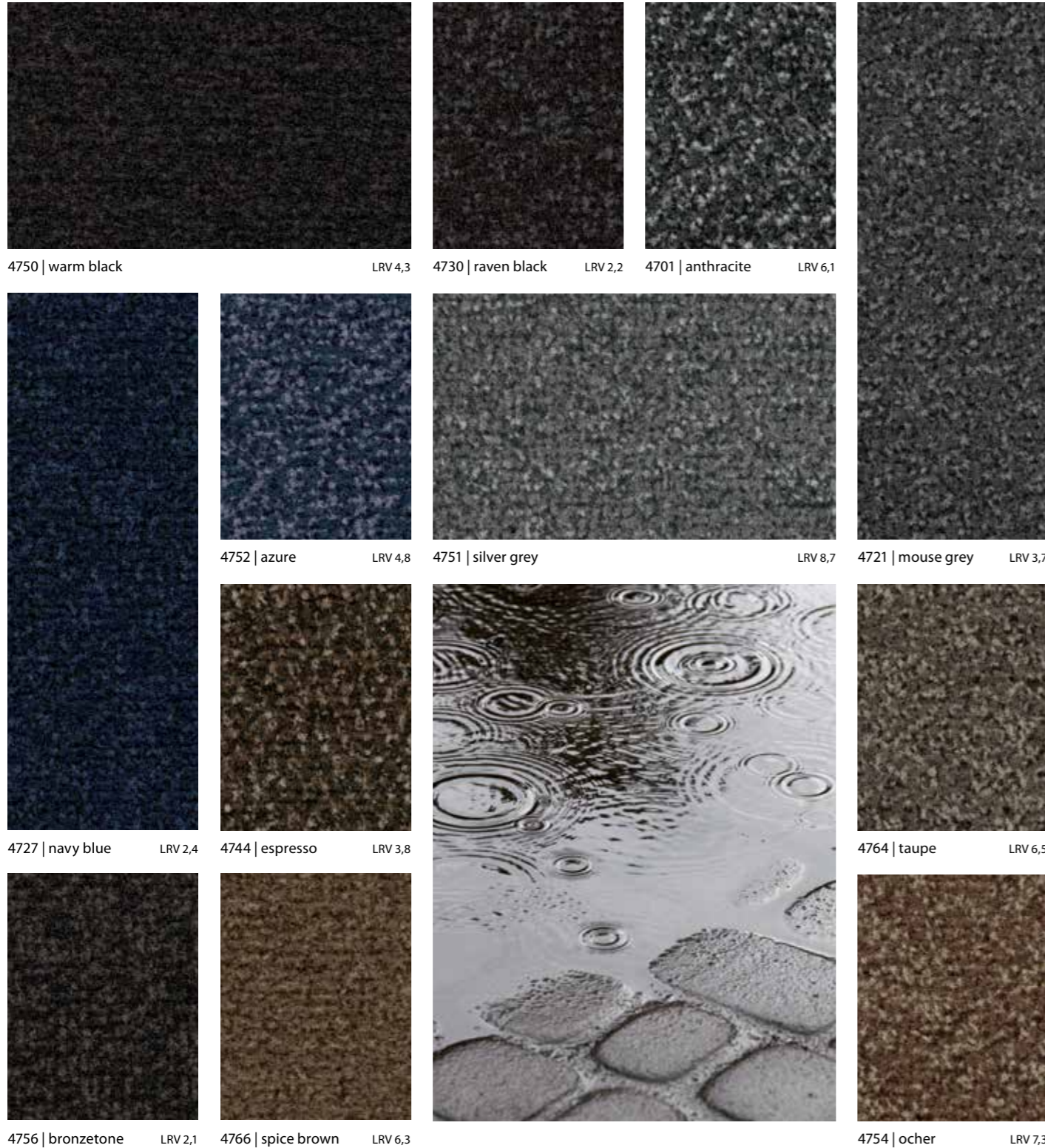
Walking just two steps is enough for Coral Classic to absorb up to half the water that would otherwise be carried inside on the soles of someone's shoes.



4750 | warm black

coral[®] classic

The ultimate moisture absorber



coral[®] classic

Technical specifications

		Coral Classic (47xx)		Coral Classic FR (47xx)		
	Total thickness	ISO 1765	Approx. 9 mm	Approx. 7,5 mm		
	Wear classification	EN1307	33, commercial heavy		33, commercial heavy	
Colours		12		12		
	Available sizes (all sizes are approx.) Roll sizes with 2,5cm edge each side		Rolls	Mats	Rolls	Mats
			105cm	55 x 90 cm	185cm (FR)	No mats
			155cm	90 x 155 cm	Roll lengths approx. 27,5m	
			205cm	135 x 205 cm		
	Rolls FR have no edges Mat sizes with 2,5cm edge all sides		205 x 300 cm			
	Suitability for castor chairs	EN 985	Castor chair continuous use r=2,8		Castor chair continuous use r=2,8	
Colour fastness ratings:						
	Light	EN ISO 105/B02	7-8		7-8	
	Rubbing	EN ISO 105/X12	4-5		4-5	
	Water	EN ISO 105/E01	4-5		4-5	
	Seawater	EN ISO 105/E02	4-5		4-5	
	Waterstains	EN 1307 annex G	4-5		4-5	
	Shampoo	BS 1006	4-5		4-5	
	Organic solvents	EN ISO 105/X05	4-5		4-5	
Manufacturing method/type		Tufted, 5/32" cut-pile		Tufted, 5/32" cut-pile		
Designs		Multi coloured designed/coloured		Multi coloured designed/coloured		
Pile material		100% polyamide-BCF solution dyed		100% polyamide-BCF solution dyed		
Tuft base		Non-woven polyester		Non-woven polyester		
Backing		EVERFORT vinyl		FR-latex		
	Total weight	ISO 8543	Approx. 3400 gram/m ²		Approx. 3400 gram/m ²	
	Pile installation weight	ISO 8543	Approx. 870 gram/m ²		Approx. 900 gram/m ²	
	Pile thickness	ISO 1766	Approx. 7 mm		Approx. 6 mm	
	Pile density	ISO 8543	0,100 gram/cm ³		0,141 gram/cm ³	
	Number of tufts	ISO 1763	Approx. 61500/m ²		Approx. 61500/m ²	
	Suitability for stairs	EN 1963	Yes*		Yes	
	Comfort class	EN 1307	LC3		LC3	

All Coral products meet the requirements of EN 14041, excluding loose-laid mats and rugs.



	Fire behaviour	EN 13501-1	B _s 1	B _s 1
	Slip resistance	EN 13893	DS	DS
	Personal charging	ISO 6356	< 2 kV	< 2 kV
	Heat transmission resistance	ISO 8302	0,15 m ² K/W	0,13 m ² K/W

* For easy installation Coral FR is a better solution for stair noses.

- Made with Econyl[®] 100% regenerated yarns
- Primary backing made from recycled PET bottles
- The only entrance flooring in the world with an environmental BRE A+ rating
- Keeps out moisture and dirt
- Complies with the highest fire class standard: B_{f1}-s1
- Suitable for the toughest commercial use
- Ideal for inside entrance and circulation areas

Where design meets environment

With its contemporary linear design and rich, deep pile, Coral Welcome packs the style and aesthetic appeal of a luxury carpet. It makes an unequivocal statement in any entrance area.

But Coral Welcome is more than just a fabulous looking floor covering – it's

an environmentally advanced one as well. The secret lies in its use of Econyl[®] 100%-regenerated yarn, which is made from regenerated industrial and post-consumer waste. Abandoned fishing nets are one of the sources. Taking the environmental aspect even further, the primary backing is made from recycled PET

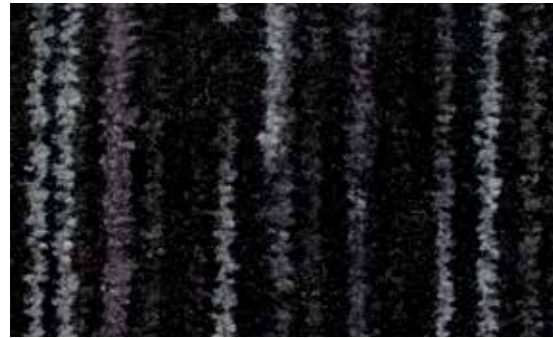
bottles, and the covering is made in a plant that is close to achieving the Zero Landfill standard for waste production.

Made with 100% Regenerated Nylon
ECONYL[®]

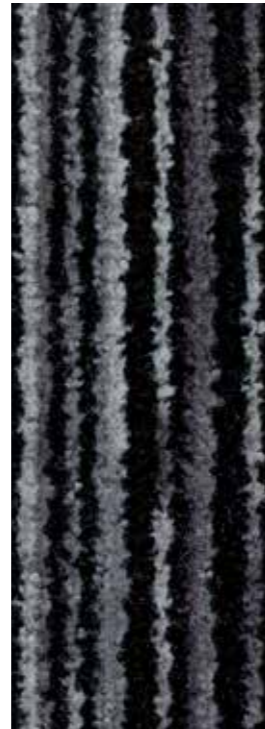


Coral Welcome is made with Econyl[®] 100%-regenerated recycled yarns, and the primary backing from recycled PET bottles. Forbo works closely with suppliers who share our determination to make ever-greater use of regenerated and recycled materials.

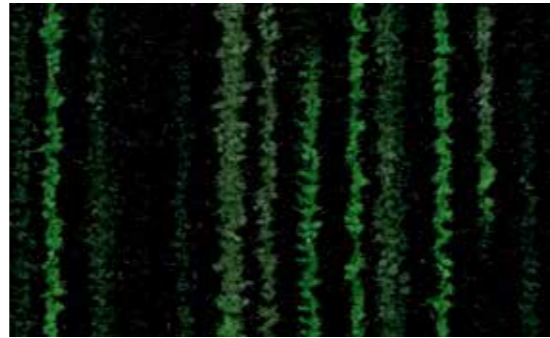




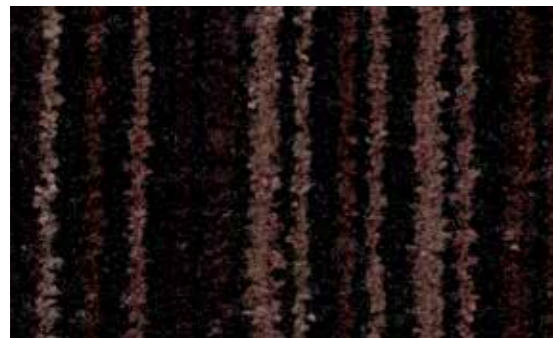
3210 | black magic LRV 1,6



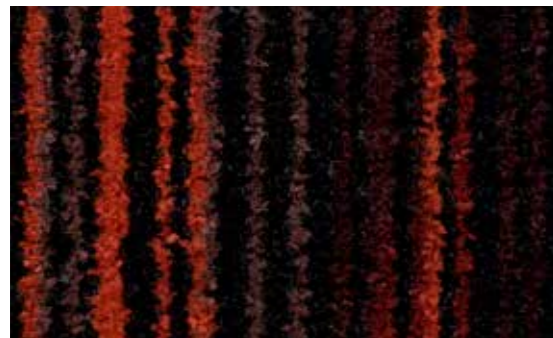
3201 | silver shadow LRV 3,0



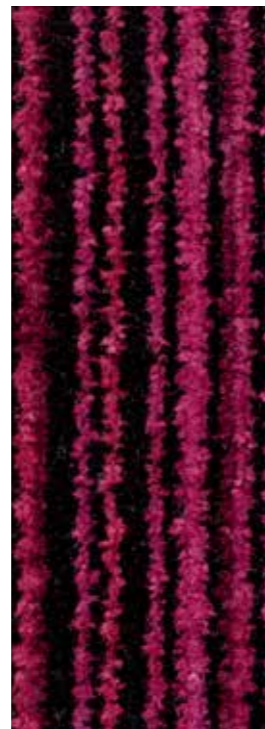
3208 | matrix LRV 2,3



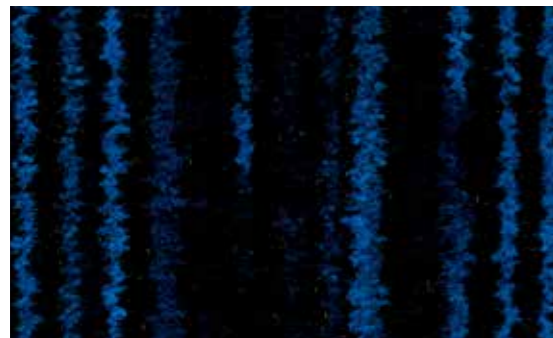
3204 | chocolate LRV 1,1



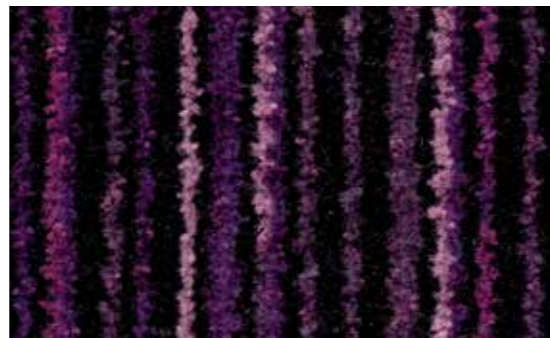
3206 | volcano LRV 1,3



3203 | last sunset LRV 1,4



3207 | blue velvet LRV 1,1



3209 | purple rain LRV 1,3

		Coral Welcome (32xx)		Coral Welcome FR (32xx)	
	Total thickness	ISO 1765	Approx. 8,5 mm	Approx. 7,5 mm	
	Wear classification	EN1307	33, commercial heavy		33, commercial heavy
Colours		8		8	
	Available sizes (all sizes are approx.) Roll sizes with 2,5cm edge each side		Rolls	Mats	
			205cm	105 x 155cm	190cm
	Rolls FR have no edges Mat sizes with 2,5cm edge all sides		Roll lengths approx. 27,5m		Roll lengths approx. 27,5m
	Suitability for castor chairs	EN 985	Castor chair continuous use r=2,8		Castor chair continuous use r=2,8
Colour fastness ratings:					
	Light	EN ISO 105/B02	>5		>5
	Rubbing	EN ISO 105/X12	5		5
	Water	EN ISO 105/E01	4-5		4-5
	Seawater	EN ISO 105/E02	5		5
	Waterstains	EN 1307 annex G	5		5
	Shampoo	BS 1006	4-5		4-5
	Organic solvents	EN ISO 105/X05	5		5
Manufacturing method/type		Tufted, 5/32" cut-pile		Tufted, 5/32" cut-pile	
Designs		Multi-coloured linear		Multi-coloured linear	
Pile material		100% regenerated Ecnyl [®] polyamide-BCF		100% regenerated Ecnyl [®] polyamide-BCF	
Tuft base		100% recycled non-woven PET/Ecnyl [®]		100% recycled non-woven PET/Ecnyl [®]	
Backing		EVERFORT vinyl		FR Latex	
	Total weight	ISO 8543	Approx. 3200 gram/m ²		Approx. 2500 gram/m ²
	Pile installation weight	ISO 8543	Approx. 750 gram/m ²		Approx. 750 gram/m ²
	Pile thickness	ISO 1766	Approx. 5,7 mm		Approx. 5,7 mm
	Pile density	ISO 8543	0,107 gram/cm ³		0,107 gram/cm ³
	Number of tufts	ISO 1763	Approx. 75000/m ²		Approx. 75000/m ²
	Suitability for stairs	EN 1963	Yes*		Yes
	Comfort class	EN 1307	LC2		LC2
EN 14041					
All Coral products meet the requirements of EN 14041, excluding loose-laid mats and rugs.					
	Fire behaviour	EN 13501-1	B _{fl} -s1		B _{fl} -s1
	Slip resistance	EN 13893	DS		DS
	Personal charging	ISO 6356	< 2 kV		< 2 kV

* For easy installation Coral FR is a better solution for stair noses.

coral[®] brush pure

- Good all-rounder that keeps out moisture and dirt
- Made with Econyl[®] 100%-regenerated yarns
- Appealing uni colours complement every floor
- Complies with the highest fire class standard: B_{f1}-s1
- Suitable for the toughest commercial use
- Ideal for inside entrance and circulation areas

Solid performer that fits in anywhere

Coral Brush pure is suitable for all types of entrance areas, absorbing moisture and removing dry soiling as the weather demands. Created around simple, solid colours, this collection works well with any interior design, serving as eye-catcher

or self-effacing support for the rest of the floor design.

Coral Brush pure is made of three types of yarn, each offering a different benefit, while the space between the yarns serves to hide

dirt, which ensures a clean appearance for longer. Coral brush pure offers a choice of 12 colourways that can be used with each other or in combination with other Coral ranges.



Coral Brush pure is made of three yarns: capillary yarns to absorb moisture; active dirt-scraping yarns; and heavy duty texture yarns that can withstand the heaviest pounding.



5719 | bossanova purple
marmoleum fresco 3866 | eternity

coral[®] brush pure

Solid performer that fits in anywhere



5730 | vulcan black LRV 1,1



5720 | gondola black LRV 1,2



5721 | hurricane grey LRV 2,8



5714 | shark grey LRV 4,6



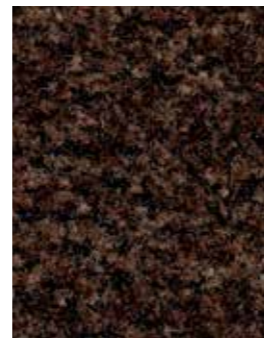
5710 | asphalt grey LRV 1,6



5727 | stratos blue LRV 1,6



5719 | bossanova purple LRV 1,6



5724 | chocolate brown LRV 2,1



5726 | jambalaya brown LRV 2,0



5715 | charcoal grey LRV 1,7



5729 | sangria red LRV 1,1



5723 | cardinal red LRV 2,5

coral[®] brush pure

Technical specifications

		Coral Brush pure/blend (57xx)*		Coral Brush pure/blend FR (57xx)	
	Total thickness	ISO 1765	Approx. 9 mm	Approx. 9 mm	
	Wear classification	EN1307	33, commercial heavy	33, commercial heavy	
Colours		12		12	
	Available sizes (all sizes are approx.) Roll sizes with 2,5cm edge each side		Rolls	Mats	Rolls
			105cm	55 x 90 cm	185cm (FR)
			155cm	90 x 155 cm	No mats
			205cm	135 x 205 cm	Roll lengths approx. 27,5m
	Rolls FR have no edges Mat sizes with 2,5cm edge all sides		205 x 300 cm		
	Suitability for castor chairs	EN 985	Castor chair continuous use r=2,5	Castor chair continuous use r=2,5	
Colour fastness ratings:					
	Light	EN ISO 105/B02	>5	>5	
	Rubbing	EN ISO 105/X12	5	5	
	Water	EN ISO 105/E01	4-5	4-5	
	Seawater	EN ISO 105/E02	4-5	4-5	
	Waterstains	EN 1307 annex G	5	5	
	Shampoo	BS 1006	4-5	4-5	
	Organic solvents	EN ISO 105/X05	4-5	4-5	
Manufacturing method/type		Tufted, 5/32" cut-pile		Tufted, 5/32" cut-pile	
Designs		Plain designed/ coloured blend		Plain designed/ coloured blend	
Pile material		100% regenerated Econyl [®] polyamide		100% regenerated Econyl [®] polyamide	
Tuft base		Non-woven polyester		Non-woven polyester	
Backing		EVERFORT vinyl		FR-latex	
	Total weight	ISO 8543	Approx. 3400 gram/m ²	Approx. 3400 gram/m ²	
	Pile installation weight	ISO 8543	Approx. 920 gram/m ²	Approx. 920 gram/m ²	
	Pile thickness	ISO 1766	Approx. 7 mm	Approx. 6,5 mm	
	Pile density	ISO 8543	0,105 gram/cm ³	0,118 gram/cm ³	
	Number of tufts	ISO 1763	Approx. 58.000/m ²	Approx. 63.000/m ²	
	Suitability for stairs	EN 1963	Yes*	Yes	
	Comfort class	EN 1307	LC3	LC2	

All Coral products meet the requirements of EN 14041, excluding loose-laid mats and rugs.



	Fire behaviour	EN 13501-1	B _{FL} -s1	B _{FL} -s1
	Slip resistance	EN 13893	DS	DS
	Personal charging	ISO 6356	< 2 kV	< 2 kV
	Heat transmission resistance	ISO 8302	0,118 m ² K/W	0,093 m ² K/W

* For easy installation Coral FR is a better solution for stair noses.

coral[®] brush blend

- The ultimate first impression
- Made with Econyl[®] 100%-regenerated yarns
- High performance on moisture and dirt
- Complies with the highest fire class standard: B_{fl}-s1
- Suitable for the toughest commercial use
- Ideal for inside entrance and circulation areas

Functionality with great looks as well

Coral Brush blend absorbs moisture and removes dry soiling. Factor in a strong linear design that ensures it complements the look and feel of any space and you have a floor covering that is perfect for all types of entrance.

Coral Brush blend's all-round excellent performance is the result of combining

three yarns that each offer a different benefit. Capillary yarns provide a large surface area for absorbing moisture; active dirt-scraping yarns quickly brush off soil; heavy-duty texture yarns ensure Coral Brush blend retains its good looks and can withstand heavy foot and wheeled traffic.



Made with 100% Regenerated Nylon

ECONYL[®]

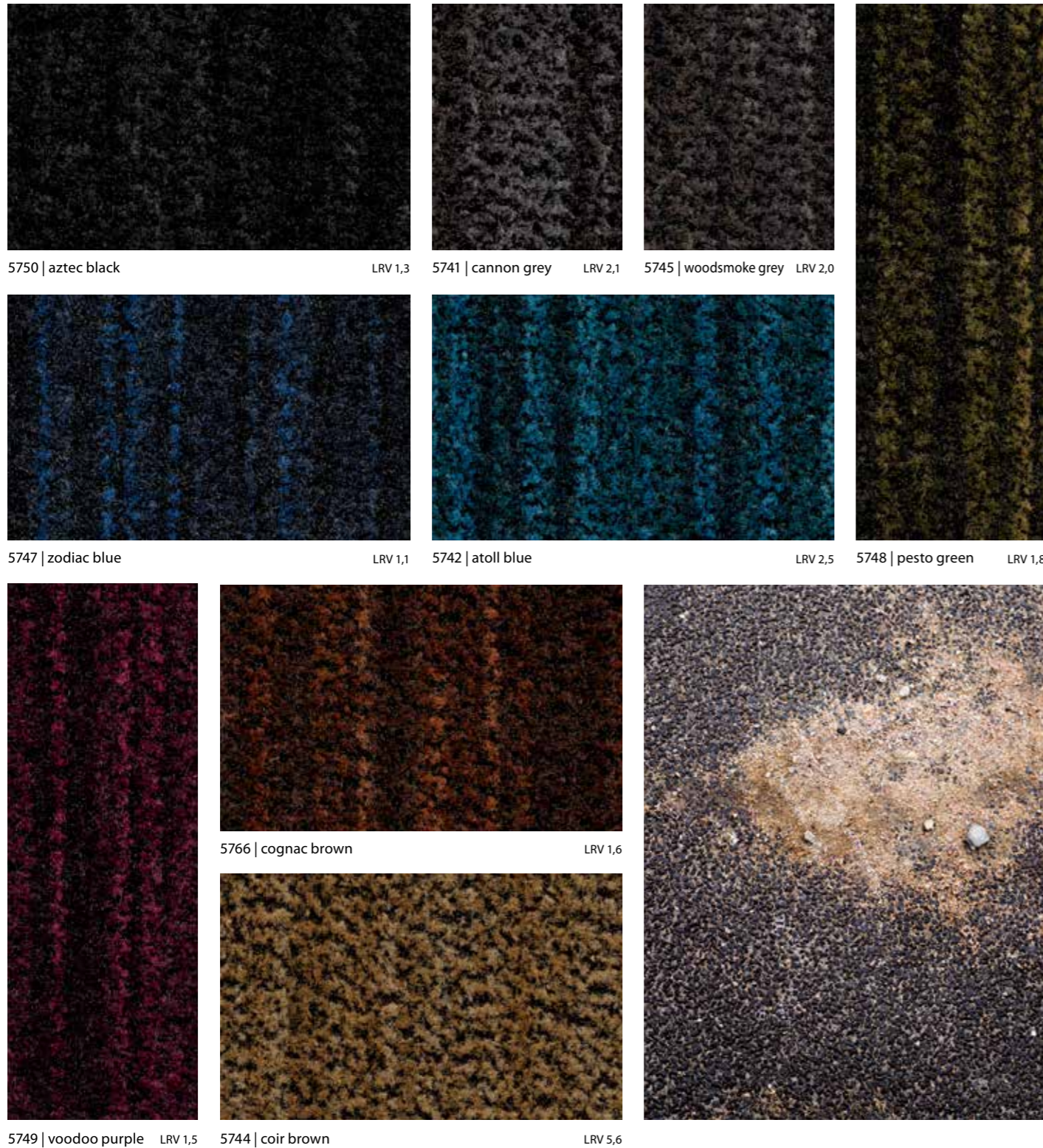
Coral Brush blend's three yarns not only clean and absorb, they hide dirt too, ensuring your entrance looks clean for longer. Coral Brush blend is available in a choice of nine blended colourways.



5742 | atoll blue

coral® brush blend

Functionality with great looks as well



coral® brush blend

Technical specifications

		Coral Brush pure/blend (57xx)*		Coral Brush pure/blend FR (57xx)	
	Total thickness	ISO 1765	Approx. 9 mm	Approx. 9 mm	
	Wear classification	EN1307	33, commercial heavy		33, commercial heavy
Colours		9		9	
	Available sizes (all sizes are approx.) Roll sizes with 2,5cm edge each side		Rolls	Mats	Rolls
			105cm	55 x 90 cm	185cm (FR)
	Rolls FR have no edges Mat sizes with 2,5cm edge all sides		155cm	90 x 155 cm	Roll lengths approx. 27,5m
			205cm	135 x 205 cm	
			Roll lengths approx. 27,5m		
	Suitability for castor chairs	EN 985	Castor chair continuous use r=2,5		Castor chair continuous use r=2,5
Colour fastness ratings:					
	Light	EN ISO 105/B02	>5		>5
	Rubbing	EN ISO 105/X12	5		5
	Water	EN ISO 105/E01	4-5		4-5
	Seawater	EN ISO 105/E02	4-5		4-5
	Waterstains	EN 1307 annex G	5		5
	Shampoo	BS 1006	4-5		4-5
	Organic solvents	EN ISO 105/X05	4-5		4-5
Manufacturing method/type		Tufted, 5/32" cut-pile		Tufted, 5/32" cut-pile	
Designs		Plain designed/ coloured blend		Plain designed/ coloured blend	
Pile material		100% regenerated Econyl® polyamide		100% regenerated Econyl® polyamide	
Tuft base		Non-woven polyester		Non-woven polyester	
Backing		EVERFORT vinyl		FR-latex	
	Total weight	ISO 8543	Approx. 3400 gram/m ²		Approx. 3400 gram/m ²
	Pile installation weight	ISO 8543	Approx. 920 gram/m ²		Approx. 920 gram/m ²
	Pile thickness	ISO 1766	Approx. 7 mm		Approx. 6,5 mm
	Pile density	ISO 8543	0,105 gram/cm ³		0,118 gram/cm ³
	Number of tufts	ISO 1763	Approx. 58.000/m ²		Approx. 63.000/m ²
	Suitability for stairs	EN 1963	Yes*		Yes
	Comfort class	EN 1307	LC3		LC2
EN 14041					
All Coral products meet the requirements of EN 14041, excluding loose-laid mats and rugs.					
	Fire behaviour	EN 13501-1	B _{FL} -s1		B _{FL} -s1
	Slip resistance	EN 13893	DS		DS
	Personal charging	ISO 6356	< 2 kV		< 2 kV
	Heat transmission resistance	ISO 8302	0,118 m ² K/W		0,093 m ² K/W

* Also available with fire retardant backing.

coral[®] duo

- Excellent solution for every entrance
- Made for 75% with Econyl[®] 100% regenerated yarns
- Unbeatable performance on both moisture and dirt
- Complies with the highest fire class standard: Bfl-s1
- Suitable for the toughest commercial use
- Ideal for inside entrance

Best worker for every space

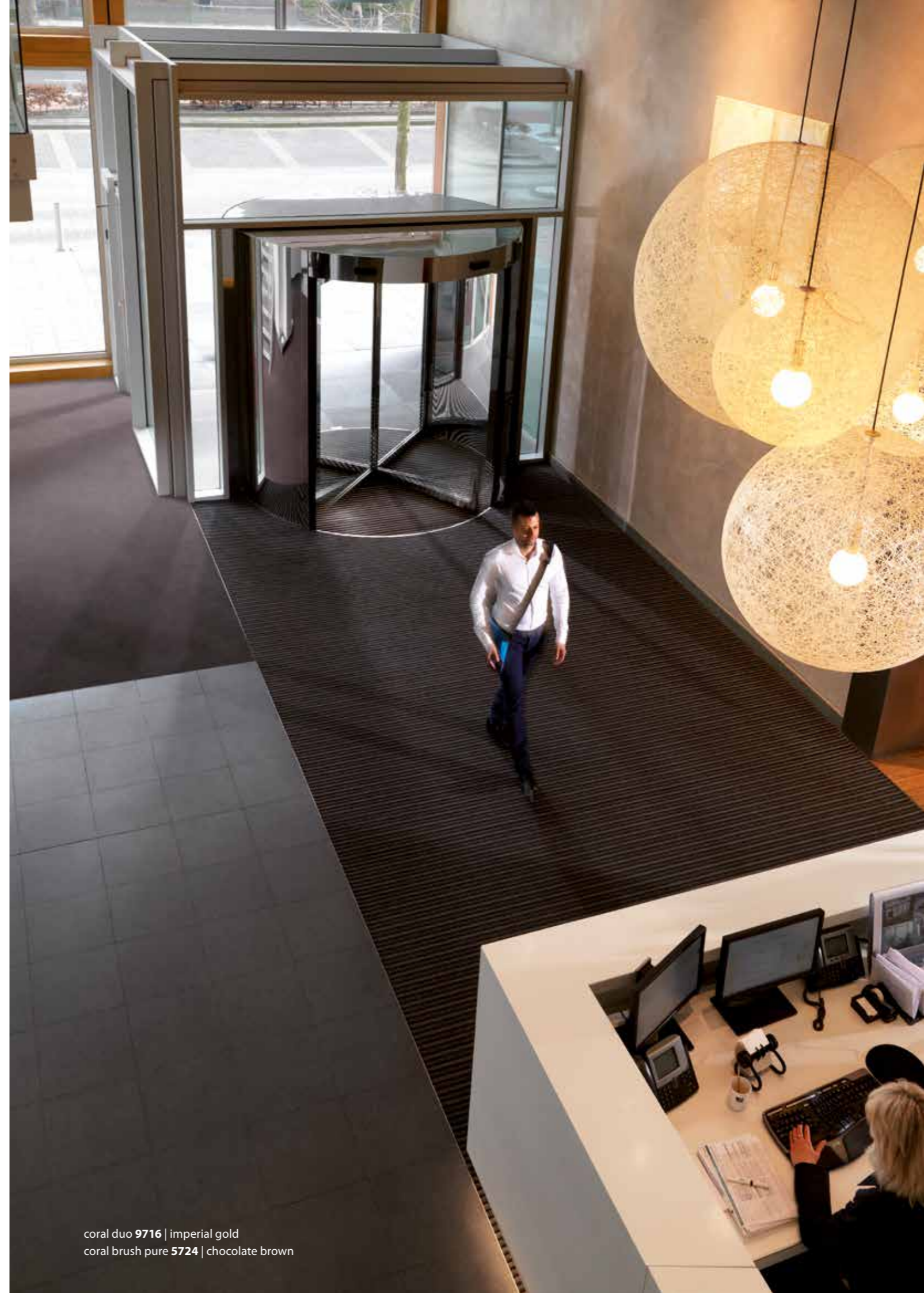
A short entrance and clean floor coverings don't go together, do they? Well, yes, they can. Coral Duo is the go-to solution when you need maximum dirt removal, unrivalled dirt retention and exceptional moisture absorption all in just a couple of paces.

Research has shown that Coral Duo retains 10% more dirt in the first few metres than any other textile entrance flooring solution on the market. Which makes it even the best choice for smaller entrances. Featuring a ribbed construction, Coral Duo is not only functional, it also provides an aesthetically

pleasing aspect to any entrance area and is easy to combine with our Coral Brush pure and Coral Classic collections.

Coral Duo combines our Coral Brush pure and Coral Classic technologies, reinforced with alternating strips of strong, thick yarns with additional dirt-scraping properties. As a result, Coral Duo outperforms all comparable textile solutions in the first few metres, making it ideal even for short entrances.

Made with 100% Regenerated Nylon
ECONYL[®]



coral duo 9716 | imperial gold
coral brush pure 5724 | chocolate brown

coral[®] duo

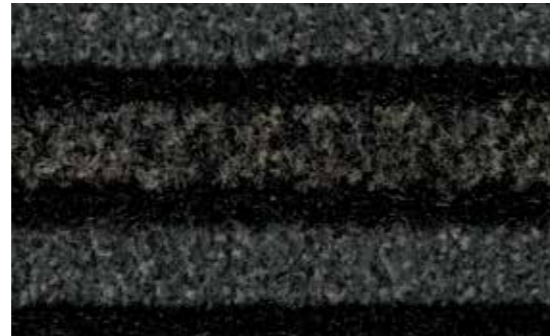
Best worker for every space



9729 | wilshire red LRV 1,1



9730 | black diamond LRV 1,2



9721 | dark steel LRV 2,4



9727 | Volga blue LRV 1,4



9725 | cafe bahia LRV 1,3



9716 | imperial gold LRV 2,8



9714 | Sicilian sand LRV 4,0



9710 | luna pearl LRV 3,7

coral[®] duo

Technical specifications

		Coral Duo (97xx)		Coral Duo FR (97xx)	
	Total thickness	ISO 1765	Approx. 9 mm	Approx. 9 mm	
	Wear classification	EN1307	33, commercial heavy		33, commercial heavy
Colours		8		8	
	Available sizes (all sizes are approx.) Roll sizes with 2,5cm edge each side		Rolls	Mats	Rolls
	Rolls FR have no edges Mat sizes with 2,5cm edge all sides		205cm	No mats	190cm (FR)
			Roll lengths approx. 27,5m		Roll lengths approx. 27,5m
	Suitability for castor chairs	EN 985	Castor chair continuous use r=3,7		Castor chair continuous use r=3,7
Colour fastness ratings:					
	Light	EN ISO 105/B02	>5		>5
	Rubbing	EN ISO 105/X12	4-5		4-5
	Water	EN ISO 105/E01	4-5		4-5
	Seawater	EN ISO 105/E02	5		5
	Waterstains	EN 1307 annex G	5		5
	Shampoo	BS 1006	4-5		4-5
	Organic solvents	EN ISO 105/X05	4-5		4-5
Manufacturing method/type		Tufted, 5/32" cut-pile		Tufted, 5/32" cut-pile	
Designs		ribbed		ribbed	
Pile material		100% polyamide-BCF, where 75% is regenerated Econyl®		100% polyamide-BCF, where 75% is regenerated Econyl®	
Tuft base		Non-woven polyester		Non-woven polyester	
Backing		EVERFORT vinyl		FR-latex	
	Total weight	ISO 8543	Approx. 3200 gram/m ²		Approx. 2300 gram/m ²
	Pile installation weight	ISO 8543	Approx. 670 gram/m ²		Approx. 670 gram/m ²
	Pile thickness	ISO 1766	Approx. 6 mm		Approx. 6 mm
	Pile density	ISO 8543	0,095 gram/cm ³		0,075 gram/cm ³
	Number of tufts	ISO 1763	Approx. 32.000/m ²		Approx. 32.000/m ²
	Suitability for stairs	EN 1963	No		No
	Comfort class	EN 1307	LC2		LC2
All Coral products meet the requirements of EN 14041, excluding loose-laid mats and rugs.					
	Fire behaviour	EN 13501-1	B _{fl} -s1		B _{fl} -s1
	Slip resistance	EN 13893	DS		DS
	Personal charging	ISO 6356	< 2 kV		< 2 kV
	Heat transmission resistance	ISO 8302	0,131 m ² K/W		0,140 m ² K/W



coral[®] grip

- Contains granulates for maximum non-slip performance
- Cleans off the worst dirt before it can get inside
- Helps protect an inviting interior design street-side
- Suitable for the heaviest commercial use
- Ideal for outside and inside entrance

The ultimate dirt and grit remover

Want to know the secret to keeping your interior clean even when it looks like a hopeless cause? Don't start inside, start outside – by scraping off the largest soil particles before your visitors even cross the threshold.

Coral Grip is a versatile, non-woven clean-off barrier mat for outdoor and indoor use that comes in medium-duty (MD) and heavy-duty (HD) formats. Standard Coral Grip has an open, non-backed, pervious structure, though it can also be manufactured with an Everfort vinyl

backing to make it impervious. And when the going is really tough, there's Coral Grip HD, whose patented embossed design and durable, pliable vinyl filaments ensure a highly effective dirt-scraping action. Both versions of Coral Grip are available in six solid colours.

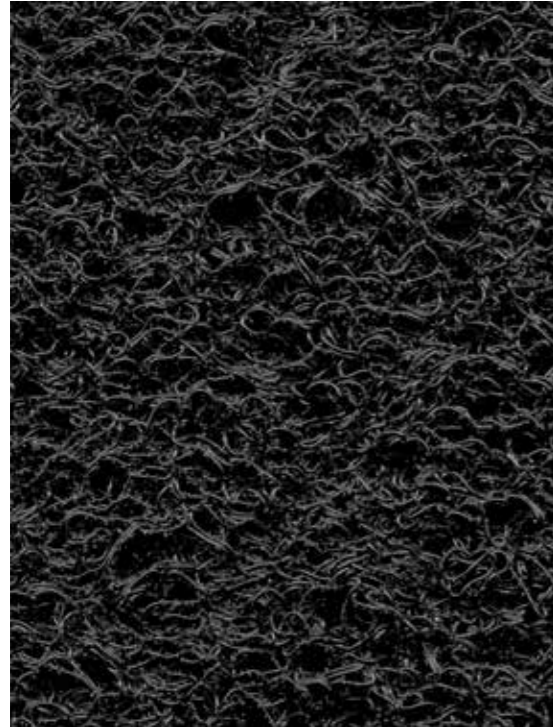


Coral Grip not only cleans, it provides a secure footing, too. The addition of granulated PVC chips creates a non-slip surface that will help prevent people slipping and sliding even on a ramp.

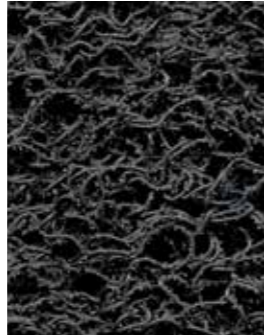


coral[®] grip

The ultimate dirt and grit remover



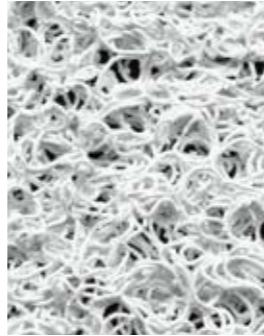
6150 6130 | ink LRV 2,3



6145 6125 | lead LRV 4,5



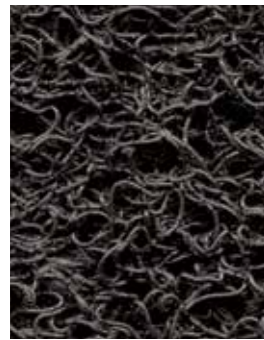
6141 6121 | ash LRV 7,7



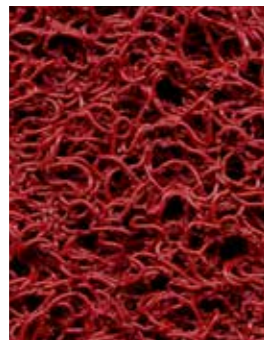
6142 6122 | salt LRV 54,5



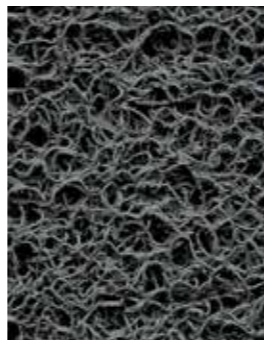
6942 6922 | salt LRV 54,5



6144 6124 | soil LRV 3,6



6143 6123 | wine LRV 4,5



6941 6921 | ash LRV 7,7



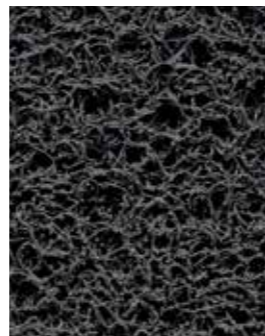
6944 6924 | soil LRV 3,6



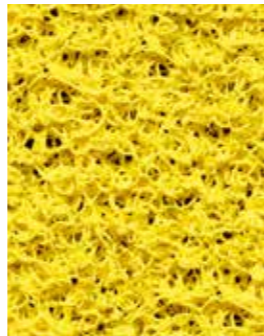
6943 6923 | wine LRV 4,5



6950 6930 | ink LRV 2,3



6945 6925 | lead LRV 4,5



6149 6129 | sulfur

6949 6929 | sulfur

61xx = HD
69xx = MD

open structure with backing

coral[®] grip

Technical specifications

		Coral Grip HD (61xx)		Coral Grip MD (69xx)	
	Total thickness	ISO 1765	With backing: approx. 17 mm Open structure: approx. 16mm	With backing: approx. 12 mm Open structure: approx. 11mm	
	Wear classification	EN1307	33, commercial heavy	33, commercial heavy	
Colours		6		6	
Available sizes (all sizes are approx.)		Rolls		Mats	
		open 122cm, with backing 127 cm		60 x 90 cm	
		Roll lengths approx. 10m		Roll lengths approx. 15m	
	Suitability for castor chairs	EN 985	No	No	
Colour fastness ratings:					
	Light	EN ISO 105/B02	7	7-8	
	Rubbing	EN ISO 105/X12	4,5	4,5	
	Water	EN ISO 105/E01	5	5	
	Seawater	EN ISO 105/E02	5	5	
	Waterstains	EN 1307 annex G	5	5	
	Shampoo	BS 1006	5	5	
	Organic solvents	EN ISO 105/X05	4,5	4,5	
Manufacturing method/type		Non Woven scraping mat with embossing		Non Woven scraping mat	
Designs		3-dimensional interconnected monofilaments		3-dimensional interconnected monofilaments	
Pile material		100% vinyl Solution dyed		100% vinyl Solution dyed	
Backing		Open structure or with EVERFORT vinyl backing		Open structure or with EVERFORT vinyl backing	
	Total weight	ISO 8543	With backing: approx. 8200 gram/m ² Open structure: approx. 5500 gram/m ²	With backing: approx. 6500 gram/m ² Open structure: approx. 3500 gram/m ²	
	Suitability for stairs	EN 1963	Stairs continuous use (open structure)	Yes	
Enhanced slip properties		μ0,78		μ0,82	
All Coral products meet the requirements of EN 14041, excluding loose-laid mats and rugs.					
	Fire behaviour	EN 13501-1	With backing: B _{fl} -s1	With backing: B _{fl} -s1	
	Personal charging	ISO 6356	< 2 kV	< 2 kV	



EN 14041

coral[®] logo

- Make a compelling first impression
- Visually appealing, functionally beneficial
- Send a message to your visitors
- Reinforce your corporate identity
- Ideal for inside entrance and circulation areas



Great looks that last

How often have you seen logo mats that look dirty, faded, worn? That's what happens when a logo mat is treated as a bit of decoration rather than a serious element in interior design.

A logo mat shouldn't be a gimmick – it should perform as well as it looks. Coral Logo is designed to the same standards as our other mats, which means it will retain its looks while keeping out dirt and moisture for years to come.

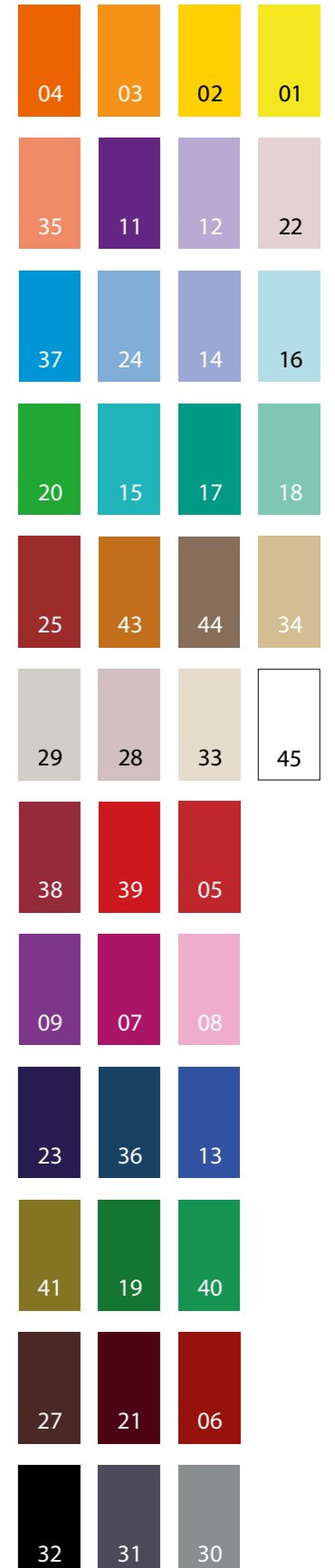
Unlike other bespoke mats, Coral Logo is produced with high quality mat yarns that prevent tracking and soiling. And depending on the colours and design of your corporate identity, you can choose between a printed mat or one with an inset logo.

<p>Printed logo mat</p> <ul style="list-style-type: none"> • Excellent visual quality and bright, attractive colours • Perfect for complicated designs featuring multiple colours • Choose from any of the colours shown plus Pantone and RAL colour matching • Stays flat on the floor, causing less trips, due to heavy vinyl backing • Long lasting and high resistance to sun light. • Excellent performance in removing dirt from your shoes. 	<p>Inset logo mat</p> <ul style="list-style-type: none"> • Ideal for extreme traffic conditions and maximum functional performance • Choose from any colour from the standard Forbo Coral collection for the base background and logo colours • Excellent performance due to use of Coral quality products. • Easy to combine as inlay in larger Coral installations
---	---



coral[®] logo Technical specifications

Coral Logo (43xx)		
	ISO 1765	Approx. 8 mm
	EN1307	33, commercial heavy
Colour		Unlimited
	Standard mat sizes (sizes with edges)	
	55 x 90	
	105 x 155, 105 x 300	
	155 x 205, 155 x 300	
	205 x 205, 205 x 300	
	EN 985	Castor chair continuous use r=2,5
Colour fastness ratings:		
	EN ISO 105/B02	7
	EN ISO 105/X12	4 5
	EN ISO 105/E01	4 5
	EN 1307 annex G	5
Manufacturing method/type		Tufted, 5/32" cut-pile
Designs		Hi-definition custom print
Pile material		100% polyamide-BCF
Tuft base		Non-woven polyester
Backing		EVERFORT vinyl
	ISO 8543	Approx. 4000 gram/m ²
	ISO 8543	Approx. 1200 gram/m ²
	ISO 1766	Approx. 5 mm
	ISO 8543	0,186 gram/cm ³
	ISO 1763	Approx. 91500/m ²
	EN 1963	Yes
	EN 1307	LC3
EN 14041		
All Coral products meet the requirements of EN 14041, excluding loose-laid mats and rugs.		
	EN 13501-1	B _{FL} -s1
	EN 13893	DS





Fire standard compliance

All vinyl-backed Coral products comply with fire class B_{fl}-s1. This is vital, because every entrance and exit is a fire exit, too. If compliance with even tougher fire regulations is required, we can supply our textile-based products with a special latex backing. This backing should also be used when placing Coral on stairs.

Cleaning and maintenance

Regular cleaning

It is essential that dry soiling is removed on a regular basis. The most effective method is to use an upright vacuum cleaner or a suction only machine with a powered rotating head attachment. Vacuum slowly in all directions to obtain the maximum benefit.

Periodical cleaning

Spot cleaning: Use an absorbent pad or blunt scraper to remove as much of the spillage as possible. Treat the residue with a proprietary spot cleaner for nylon. Rinse with clean water. Remove water with an absorbent pad or machine and allow to dry.

Additional cleaning may be required to minimise the appearance of traffic lanes in high-traffic areas. Two methods can be used. The first is dry extraction. This involves applying a natural or synthetic compound that is impregnated with water, detergent and safe-to-use solvents. The second is cylindrical brush extraction. Here a machine with counter-rotating brushes is used to both deliver the cleaning solution and collect the resulting dirty liquid.

Finally, loose-lay mats can be removed and cleaned off site at regular intervals.

Scheduled maintenance

As well as regular and daily cleaning, mats should be periodically cleaned using the more aggressive spray-extraction technique. This involves removing the dirt that has collected at the base of the fibres, reconditioning the pile and so restoring the cleaning performance. How often you

should do this depends on various factors including type of traffic, amount of traffic and the effectiveness of the regular and daily cleaning regimes. Spray extraction involves using a spray or hot water extraction machine or a 3-in-1 extractor.



Imagine the cleaning work and slip danger when there is no entrance system in place.

More flooring solutions



Linoleum

Forbo Flooring is the world leader in linoleum floor coverings, offering a range of products that are known for their high quality, durability, environmental responsibility and beautiful, innovative design. A linoleum producer for over 100 years, our global brands are today sold worldwide and we are a world leader in environmental responsibility.



Vinyl

Forbo project vinyls provide a tough yet stylish solution for environments where dirt, moisture, general wear and tear and special requirements pose a tough challenge. Forbo is a vinyl innovator, leading the way in new product categories like design vinyl tiles, acoustic vinyl, static-control vinyl and printed vinyl flooring, as well as in general purpose vinyl.



Flotex flocked flooring

Flotex combines the practicality of a resilient flooring with the slip resistant and acoustic properties usually associated with textiles. Completely waterproof, Flotex is the only truly washable textile floor covering available today. The result is a warm, comfortable, hygienic floor covering that offers constant protection against bacteria and dust mites, and which is suitable for any commercial specification.



Textile flooring

Forbo's textile flooring collection is made up of high quality tufted tiles and a comprehensive range of needle-punched carpets. Our tufted carpet tiles offer the kind of flexibility in design and installation that the contemporary office demands, while our robust, hard-wearing needle-felt textiles are ideal for creating a tranquil and harmonious atmosphere in high-traffic situations.



Nuway

The recognised market leader in engineered entrance flooring systems, Nuway offers a wide range of rigid single and double sided made-to-order mats which provide an outstanding first line of defence against soil and moisture entering a building on the soles of shoes and the treads of wheeled traffic.

Forbo Flooring Systems is part of the Forbo Group, a global leader in flooring, bonding and movement systems, and offers a full range of flooring products for both commercial and residential markets. High quality linoleum, vinyl, textile, flocked and entrance flooring products combine functionality, colour and design, offering you total flooring solutions for any environment.



Forbo Flooring B.V.
P.O. Box 13
1560 AA Krommenie
The Netherlands
T + 31 75 647 74 77
F + 31 75 647 77 01
contact@forbo.com
www.forbo-flooring.com



forbo

FLOORING SYSTEMS