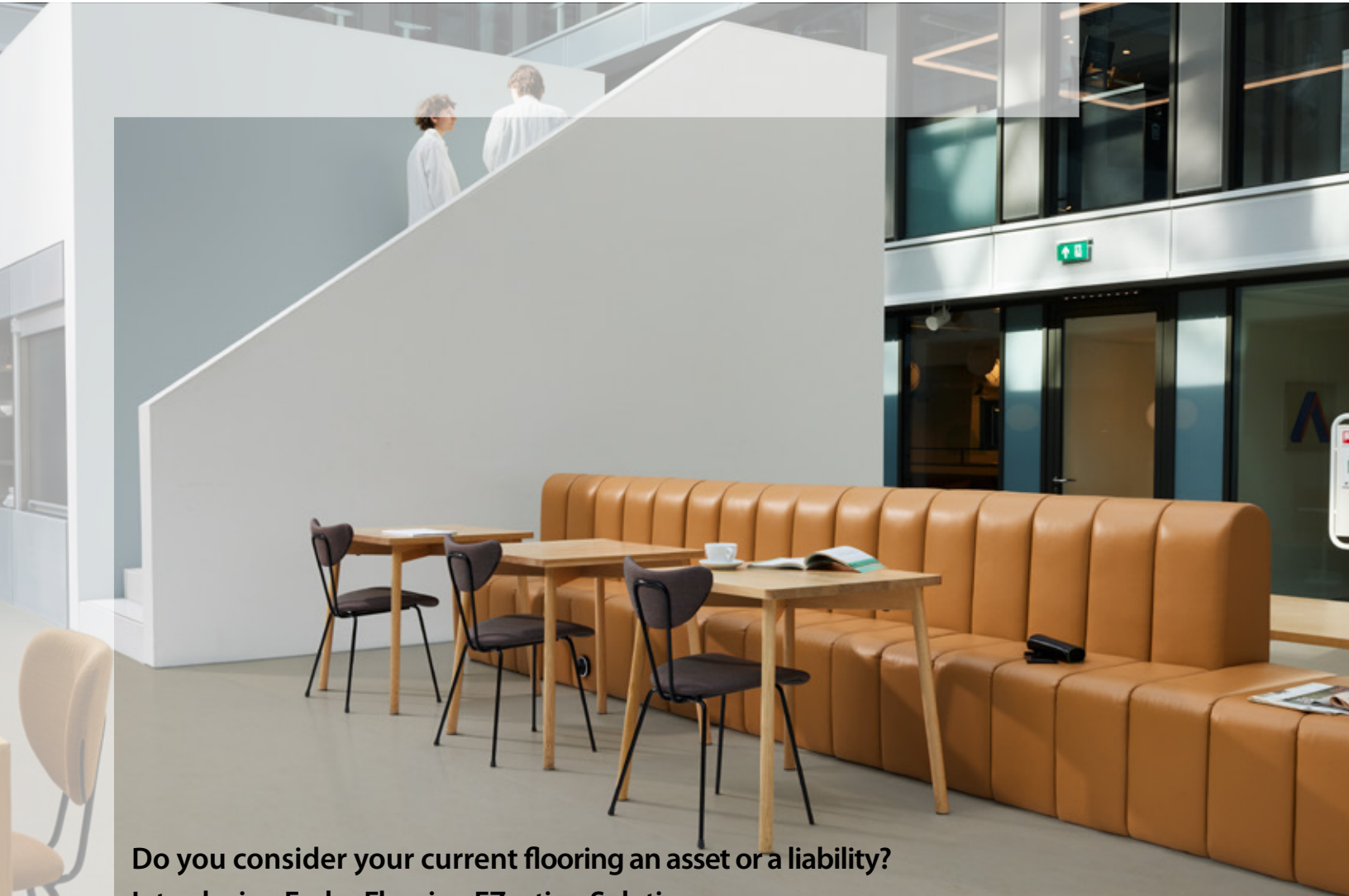


EZvations by Forbo Flooring Systems



Do you consider your current flooring an asset or a liability?

Introducing Forbo Flooring EZvation Solutions

We have listened to your frustrations and developed a series of solutions that will turn your next floor from a liability into an asset. Forbo EZvations include our Forbo 100 adhesive system, ArmorCove and Marmoweld...EZ to Use (ETU) products which focus on reducing costs through efficient use of materials and improved labor efficiency.

- Provide immediate-on occupancy
- Reduce installation downtime
- Make the existing labor more efficient by simplifying labor skills required
- Eliminating moisture mitigation costs
- Provide hygienic, watertight floors
- Eliminate cracked and punctured coving problems
- Assist in the prevention of infection control concerns
- Increase long term flooring performance

creating better environments



FLOORING SYSTEMS



Forbo 100 Adhesive Systems

Immediate occupancy adhesive system for Marmoleum sheet and tile that eliminates moisture testing and long set up times. Speeding up installation reduces time and lost revenue for project turnover.

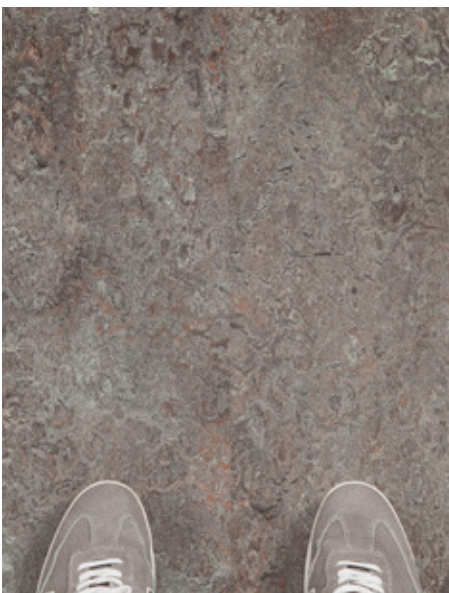
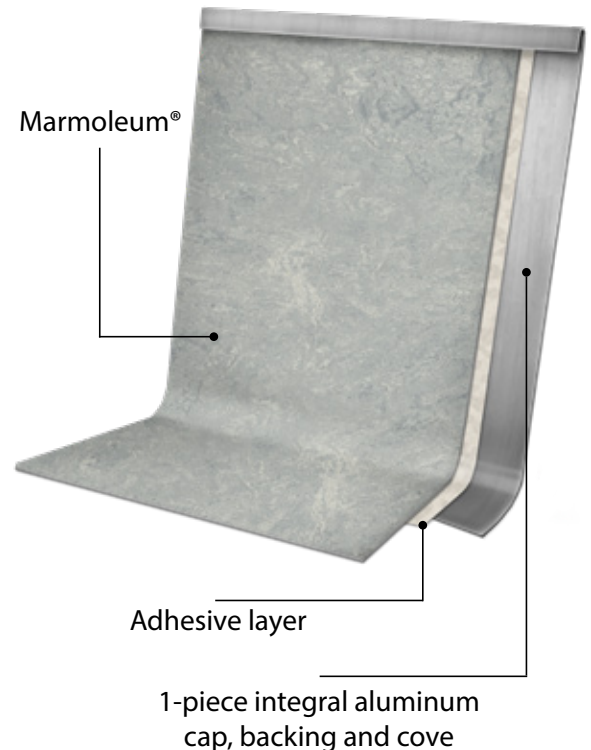
- Fastest, strongest, long-lasting, immediate-on flooring solution
- No moisture testing, eliminating costs and conflict
- No vapor retarder required
- Simplified (EZ) installation



ArmorCove

Our patented preformed Marmoleum coving solution for safe, durable flash coving that is easy to install and maintain. Providing a puncture proof solution to protect your floors from damage caused by maintenance machines, movement of equipment and point loads, such as chairs and desks.

- Guaranteed puncture-proof for life
- Prefabricated from a single piece of aluminum to form an integral cove cap, back and cove radius
- Tight radius allows cleaning equipment to get closer to the wall and clean more thoroughly, improving hygiene and facility appearance while reducing opportunity for damage
- Provides hygienic, watertight installation that aids in preventing infection control issues from water intrusion
- Faster installation at similar or lower cost versus traditional flash cove
- Reduces the time and costs associated with room turns when used in conjunction with Forbo 100 Adhesive Systems



Marmoweld...EZ to Use (ETU)

Color coordinating paste weld used to complete the installation of Forbo Marmoleum products in place of heat welding. The application of Marmoweld...ETU is faster and easier than traditional heat welding while providing a hygienic watertight installation*.

- Cost savings over traditional heat welding
- EZ to use
- The elimination of likely damage caused by grooving, burning and scalping seams from traditional heat welding
- Improved aesthetics and performance over standard heat welded floors

*Due to the developments and advancements made over the last decades with the combination of Marmoleum® TopShield pro (Forbo's factory finish for Marmoleum®), improvements in water-based adhesives and with our commitment to education of proper installation, care and maintenance procedures and environmental stewardship, heat welding is no longer necessary for most applications.

Please contact your Local Forbo Representative to set up a EZvation demonstration.