

How to save on installation costs?

# Use Coral Brush, Bright or Classic tiles!

The five steps to be taken to save installation costs.



Step 1:

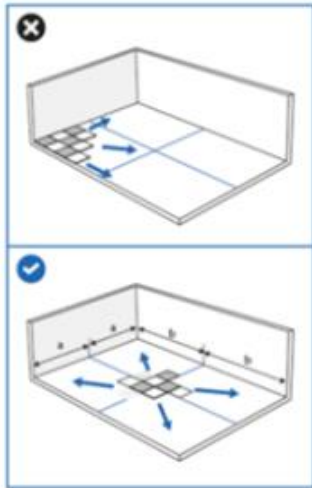
All subfloors must be sound, smooth, clean, permanently dry and free from contaminations.



Step 2:

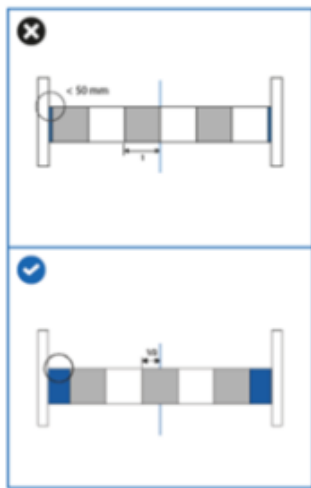
Use always boxes out of the same batch.  
Check batch numbers before installation.

Tiles 24 hours acclimatization in a room  
with temperature of 15 to 25 degrees.



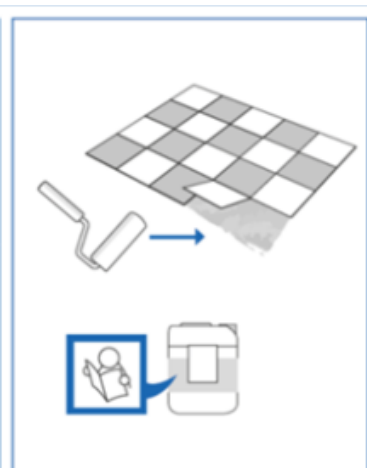
### Step 3:

Install the tiles from the centre of the room to the walls



### Step 4:

Place a template where the edge tiles are at least larger than a half tile.



### Step 5:

Ensure that the recommended tackifier and gear is used.

Read the instruction label for information on the recommended spread of the tackifier