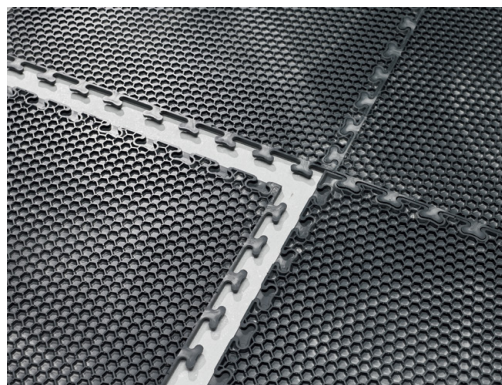
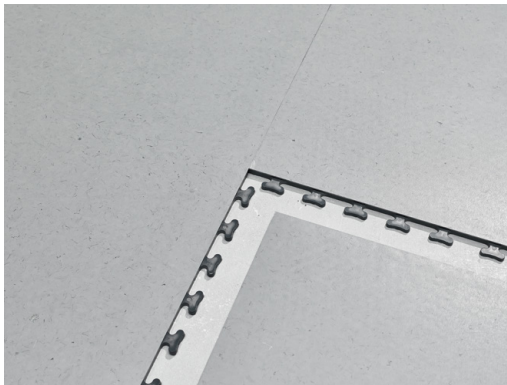


# Installation Guidance - Allura Colour Plus Tiles Over Raised Access Flooring

## Raised Access Flooring

Forbo Allura Colour Plus Tile, free floating, interlocking system for Raised Access Flooring.

A raised access floor is usually above a solid concrete subfloor and typically used in computer rooms or other areas of a building where access is provided by creating hidden voids for the passage of mechanical and electrical services.



Raised Access Flooring surface should be smooth, level and clean and in compliance with the recommendations of AS 1884-2021, Section 3. Subfloors and Underlays.

### 3.1.1.4 Surface quality

(a) Planeness—When a straight edge 2000 mm long is placed at rest at two points 2000 mm apart on the surface, no part of the surface shall be more than 4 mm below the straight edge.

(b) Smoothness—When a straight edge 150 mm long is placed at any position at rest at two points on the surface, no part of the surface shall be more than 1 mm below the straight-edge.

### General installation points of note:

1. Ridges between uneven raised access floor panels and/or gaps between adjacent panels could telegraph through to the finished tile installation.

Access panels should be checked before commencing installation to ensure that they are close fitting and level. Uneven or loose floor panels should be rectified or re-fixed by a professional access panel flooring installer before commencement of the Allura Colour Plus Tiles installation.

2. Raised access flooring panels have a tendency to settle shortly after installation and this should be taken into account when assessing the appearance of the Allura Colour Plus Tiles fitted onto raised access flooring systems.

3. Note: Incidental low-level light will exaggerate any unevenness in the subfloor and the Allura Colour Plus surface.

4. Prior to the installation, Allura Colour Plus Tiles must be acclimatised by storing it for 48 hours at a temperature of at least 18°C directly into the room that is to receive flooring. Tiles must be unpacked for acclimatisation and displayed on the floor in small and straight stocks of maximum 10 pieces each. Batch numbers must be followed in sequence when being installed. The tile installation follows the traditional tile set out.



FLOORING SYSTEMS

5. It should be basically considered that Allura Colour Plus Tiles is a loose laid, thermoplastic material and that it will therefore follow temperature fluctuations by expanding and shrinking. In normally conditioned areas with little fluctuations (working areas with heating, air conditioning etc.) a gap between 3mm and 5 mm is generally sufficient around all walls, protrusions, fixtures and fittings.

6. Expansion gaps and cover plates are not needed in the field of the tile installation - just around walls and fixtures.  
In accordance with AS1884-2021 ensure newly laid floors are covered and protected from all trades.

#### **Cutting Allura Colour Plus tiles:**

A suitable guillotine as used in the attached video link above or similar to: <http://www.robertsconsolidated.com/products/25-pro-flooring-cutter/>

The guillotine cutting blade and bed must be greater than 625 mm or 25 inches width, a jig saw with a plastic cutting blade for intricate cuts or a small circular saw fitted with a 150 mm diameter, 18 teeth, with a blade cut out width of 1.5 mm and blade thickness of 1.0 mm.

#### **Limitations:**

Allura Colour Plus Tiles cannot assume any unsupported load-bearing. Although it will bridge small holes ( $\varnothing < 5\text{cm}$ ) and small-size damages, the product cannot perform extensive levelling or even supporting functions. After a short period of time (depending on the temperature). Allura Colour Plus Tiles will self-adjust (follow the contours) of the subfloor.

**Note;** in certain areas where there is an occurrence of glazing light the honeycomb back could microscopically show through the tile.

**Wall expansion gap covers:** Need to be selected and specified for installers to cost at tender.

There are any number of expansion gap covers that will effectively cover the 3mm - 5mm expansion gap.

Below are some examples of wall expansion covers.

Alternatively the expansion gap can be filled with a backing rod and colour matched caulking for a minimal finish as in (4) NAB fit out.

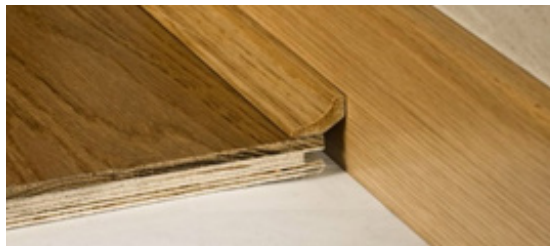
#### **Expansion gap covers:**

There are any number of expansion gap covers the will effectively cover the 3mm - 5mm expansion gap. Below are some examples of wall expansion covers.

1. Timber float floor aluminium channel skirting.



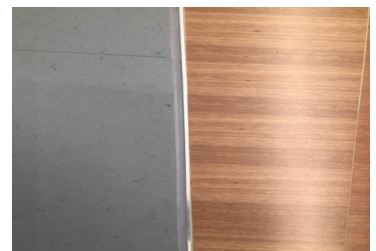
2. Timber floating floor timber skirting.



3. PVC Feather Edge skirting.



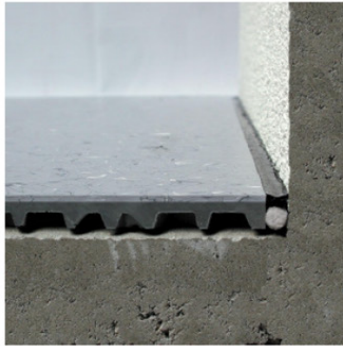
4. Backing Rod and coloured PUR caulking for discrete finish (NAB) example



In case there is a need to inspect the access flooring, or replace a damaged tile it is a simple procedure to remove the tile with a suction lifter, as shown in the photo below.

Border areas (incl. machine bases) must never be sealed or grouted with silicone.

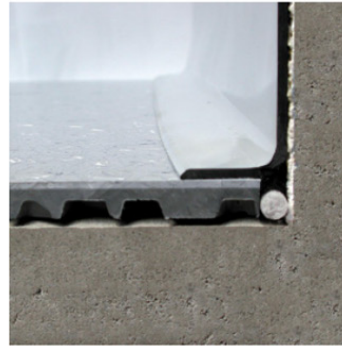
Silicone adhesion is not strong enough for PVC. Polyurethane is recommended for a two-sided adhesive sealing/grouting of border areas. A filling cord should be used as an underlay profile to ensure two-sided lateral adhesion and to reduce material consumption.



Correct! Lateral adhesion of PUR sealing compound. A foam cord is inserted first for optimum result.



Wrong! A three-sided adhesion of PUR sealing compound inhibits free expansion and may lead to damages!



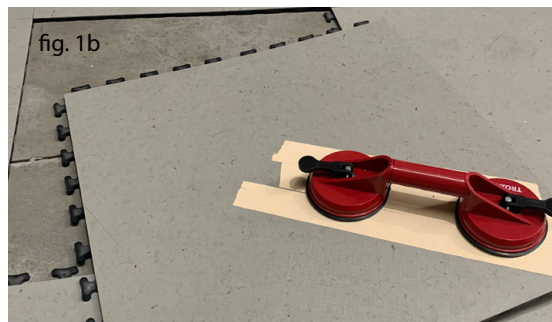
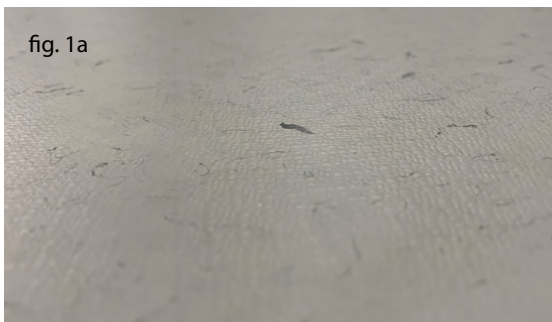
In certain applications, grouting with PUR sealing compound may be reasonable even when skirting are applied.

Note: It is pertinent that the raised access panels are without deflection especially when Allura Colour Plus tiles are heat welded at the joints. Any deflection in the raised access panels could cause the welds to split at the welded joints

**Removal and replace of installed Allura Colour Plus Tiles.** In case there is a need to inspect the access flooring, or replace a damaged tile it is a simple procedure to remove the tile with a suction lifter, as shown in the photo below.

Note: Due to the enhanced slip rating of the surface, (fig. 1a) it is recommended to use double sided tape to take up the existing tile. (fig. 1b)

1. Place the suction lifter at one edge of the tile and secure the suction levers



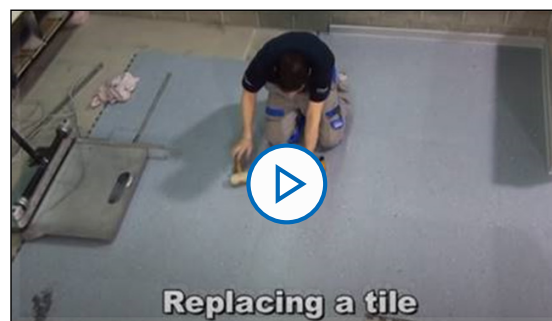
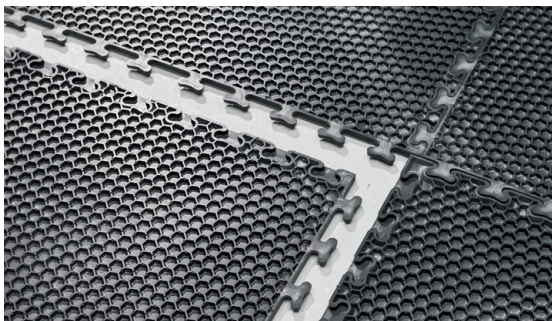
2. Firmly hold down the adjoining tile and pull the suction lifter up which should pull apart the connecting tile.

3. Perform step 2. on each join then lift the tile out of position.

4. To replace the tile simply place the tile into position and lightly tap it down with a white rubber mallet.

5. Remove the double sided tape

**Note;** Allura Colour Plus has a tight-fitting male and female honeycomb interlocking click backing which can sometime make it difficult to remove a tile if the following is not observed. When removing a tile, it is important to lightly tap the surface of the opposite interlocking tile with a white rubber mallet to disconnect the joint while lifting the centre tile up with the suction lifter. Once the opposite tile is disconnected it is a matter of then placing a flat bar under the edge of the opposite tile and lift it up and remove the tile. If by chance the suction cups do not seal wipe the suction caps with a water dampen clean rag, then place the suction cups on the tile and lock down.



A live demonstration can be seen in the following You Tube clip – Skip to 5:51 of the video clip.

#### Contact us:

Web: [www.forbo-flooring.com.au](http://www.forbo-flooring.com.au)

Email: [info.au@forbo.com](mailto:info.au@forbo.com)

Telephone: 1800 224 471

Peter Brack 0439 063 336