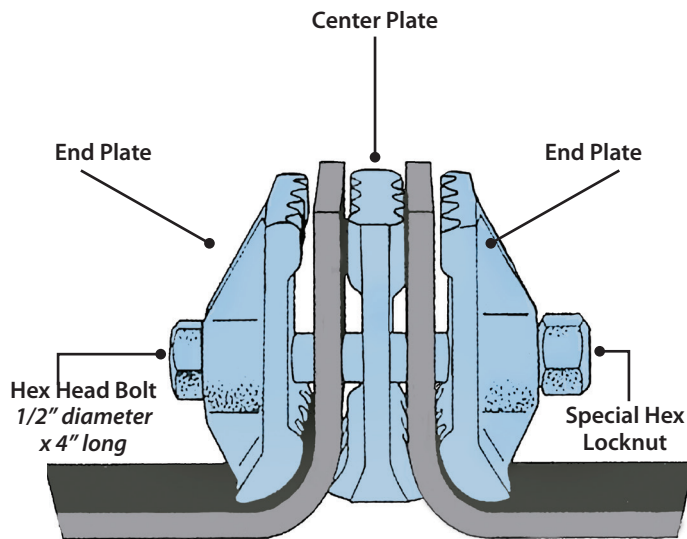


transtex belting

conveyor belts

dura-splice

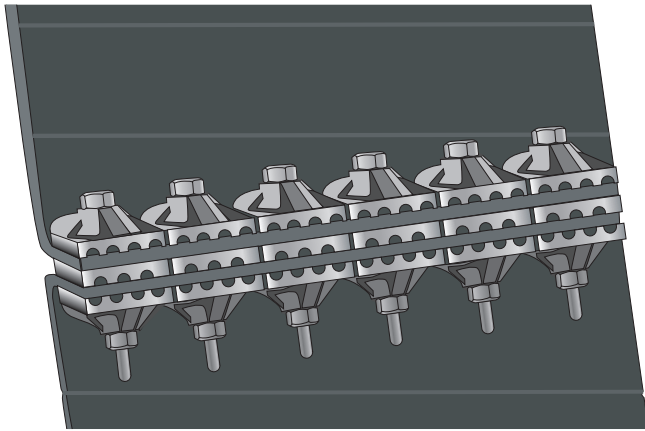
ELEVATOR BELT FASTENER



* Note: Dura-Splice and similar bar type splices are not recommended where a wing type boot pulley is used, as such pulleys make improper and abnormal contact with these splices. The constant encounter tends to abrade the pulley side of any belt prematurely and excessively at the splice area.

- Dura-Splice is recommended for belts rated up to 800 PIW and up to 1/2" overall gauge. Dura-Splice operates on the same size pulley diameters as those listed for a given belt style.*
- Holds belts in a vice-like grip between three heavy duty grooved plates designed to remain secure.
- The joint never touches the pulleys. There is no problem of metal-to-metal contact.
- Puts an end to the double belt thickness common to other joining systems. Stops the costly waste of extra belting necessary in lap and butt strap joints.
- Offers extra safety and increased load capacity because belts are not weakened with excess bolt holes.
- Can be used over and over again for years of dependable service.
- Each splice set joins 2 inches of belt width. Recommended by grain elevator operators worldwide.

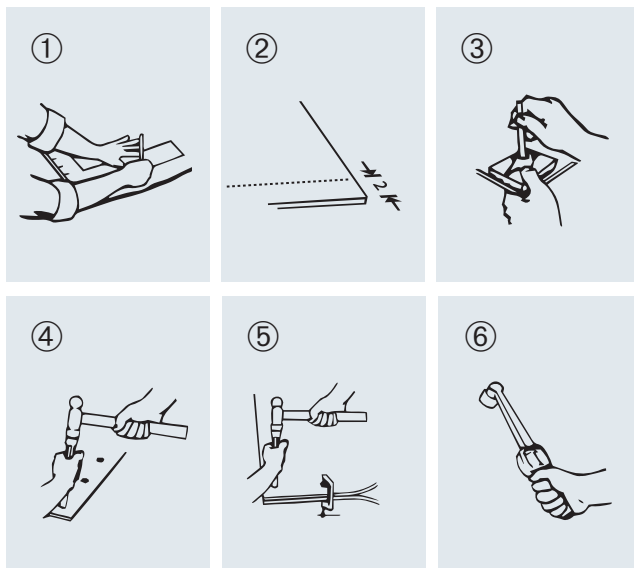
Installation instructions Transtex Belting Dura-Splice elevator belt fastener



- ① Make certain that the ends of belt are cut square.
- ② Using crayon or chalk, draw a line on belt 2" inward from end of belt. This line is the bolt centerline and should be parallel to squared end of belt.
- ③ Use outer clamp bar as template and mark location of bolt holes on the centerline all the way across width of belt.
For maximum splice strength – use as many Dura-Splice sets as possible across full width of belt, making certain the Dura-Splice units are positioned no closer than 1/4" from edge of belt or no farther away than 1" from belts edge.
- ④ Punch out holes marked on bolt centerline with 7/16" cutting punch.
- ⑤ Clamp belt ends together securely and using the punched belt as a template, mark and punch holes in other end of belt.
- ⑥ Assemble the Dura-Splice units into belt and tighten all bolts to 75 foot pounds with a torque wrench. This is important to insure maximum splice strength.

After 15 minutes, re-tighten all bolts again to 75 foot pounds.

Your Dura-Splice is finished! You have just installed a super- strong elevator splice that will give many years of service with minimum maintenance.



Forbo Movement Systems

Transtex® Belting
10125 South Tryon Street
Charlotte, NC 28273
Toll Free: (800) 922-1735
E-Mail: transtex.us@forbo.com
www.forbo-transtex.com

Forbo Movement Systems is part of the Forbo Group,
a global leader in flooring, bonding and movement systems.

