



Forbo Flooring Systems is part of the Forbo Group, a global leader in flooring and movement systems, and offers a full range of flooring products for commercial and affordable housing and new build markets. High quality linoleum, vinyl, textile, flocked and entrance flooring products combine functionality, colour and design, offering total flooring solutions for any environment.



Find us on



#### UK

Forbo Flooring UK Limited  
High Holborn Road  
Ripley  
Derbyshire DE5 3NT

#### London EC1 showroom

79 St John Street, Clerkenwell  
London EC1M 4NR  
Tel: 0207 553 9300

#### For commercial enquiries:

If calling from the North,  
Midlands, London & South East  
Tel: 0800 0282 162  
Fax: 01772 646 912

If calling from Scotland & South West  
Tel: 0800 0935 258  
Fax: 01592 643 999

#### Nuway enquiries:

Tel: 01773 740 688  
Fax: 01773 740 640

#### Residential enquiries:

Tel: 0800 0935 846  
Fax: 01592 643 999

Email: [info.flooring.uk@forbo.com](mailto:info.flooring.uk@forbo.com)  
[www.forbo-flooring.co.uk](http://www.forbo-flooring.co.uk)

#### Samples:

**Tel: 0800 731 2369**

**email: [samples.uk@forbo.com](mailto:samples.uk@forbo.com)**

Whilst Forbo Flooring UK Limited does its best to ensure that the contents of this brochure are correct and accurate at the time of publication, to the fullest extent permitted by law, Forbo Flooring UK Limited makes no, and expressly disclaims all, guarantees of any kind, express or implied in respect of the information, content, materials or products displayed in this brochure and does not represent that the information is accurate, complete or current and you are advised to visit our website at [www.forbo-flooring.co.uk](http://www.forbo-flooring.co.uk) for up-to-date details or corrections to such contents.

Please note: Digital representations may vary from the actual product. Please order a sample to see the full effect. Contact 0800 731 2369.

#### Ireland

Forbo Ireland Ltd  
2 Deansgrange Business Park  
Blackrock  
Co Dublin

Tel: 00353 1 2898 898

Fax: 00353 1 2898 177

Email: [info.ireland@forbo.com](mailto:info.ireland@forbo.com)

[www.forbo-flooring.ie](http://www.forbo-flooring.ie)

#### Registered office:

Forbo Flooring UK Limited  
High Holborn Road  
Ripley  
Derbyshire DE5 3NT  
Registered in England 9200318



FLOORING SYSTEMS

creating better environments

# the Art of FLOCKING

creating better environments



FLOORING SYSTEMS





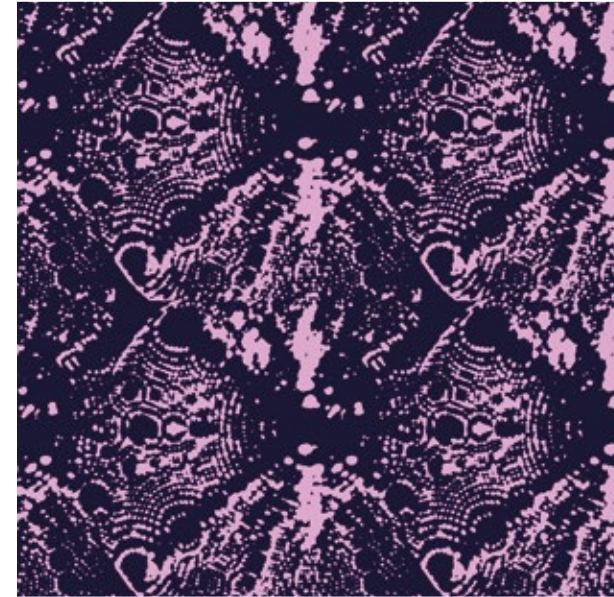
# the *Art* of **FLOCKING**

Like a timeless work of art, Flotex flocked floor coverings are an excellent investment with a unique blend of qualities that will complement any project. Flotex will also retain its superior aesthetics for years to come. Choose from an array of stunning designs in our Vision or designer collections, or create your own masterpiece using our bespoke service.

What will you do with the freedom? Creatively Flotex will enhance any interior whilst our precision-driven manufacturing process ensures high quality & performance.

**Flotex. The Art of Flocking.**





# FLOCK 'n' Roll

Rock your interior with Flotex Vision, a unique collection of over 500 digitally printed, high definition flocked flooring designs which hit the right note. You can even create your own for a totally individual solution.

Flotex is the ideal blank canvas for designers to create flooring concepts with the 'wow' factor. Our designer collection offers up to the minute artworks for the floor from world renowned designers. You can also create something bespoke for a truly individual solution from just 60m<sup>2</sup>.





# FLOCK *Star*★

**Always flawless, so do your worst!**  
Looking immaculate whatever comes  
its way, and designed to handle high  
traffic, Flotex flocked flooring really  
is a star performer.

With a 10 year guarantee, it's well suited  
to areas where durability and cleanability  
are essential. There's no need to decide  
between functionality or style, why not  
have both with Flotex? You'll be thanking  
your lucky stars you chose it!





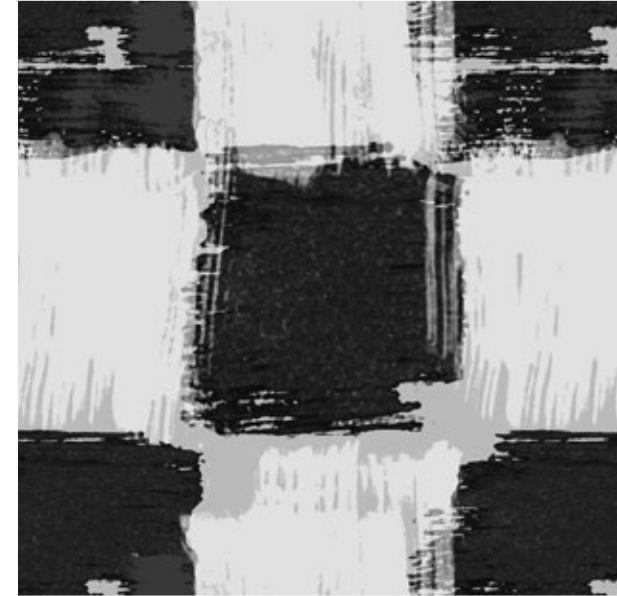
# LIVE *well* love FLOCK



Breathe easy in the knowledge you chose Flotex flocked flooring. With the prestigious Allergy UK Seal of Approval™, Flotex contributes to better indoor environments in which to live, work, learn and play.

Slip resistant and offering up to 20dB impact sound reduction, Flotex really is a reassuringly safe and sound flooring solution.





# *Thank* **FLOCK** *it's* **FLOTEX**

On the following pages we've shown how some of our customers have been inspired to use our unique, flocked flooring. Head to our website to see more examples of Flotex in use and explore our collection of over 500 designs and colours.

Don't forget to share your Flotex interiors and tell us about your experience:

**#*ThankFlockItsFlotex***

[www.forbo-flooring.co.uk/artofflocking](http://www.forbo-flooring.co.uk/artofflocking)

Find us on





the *Art* of **FLOCKING**  
Let your imagination flow



Law firm, **Primus**, created a bespoke  
Flotex design for their office in Estonia.

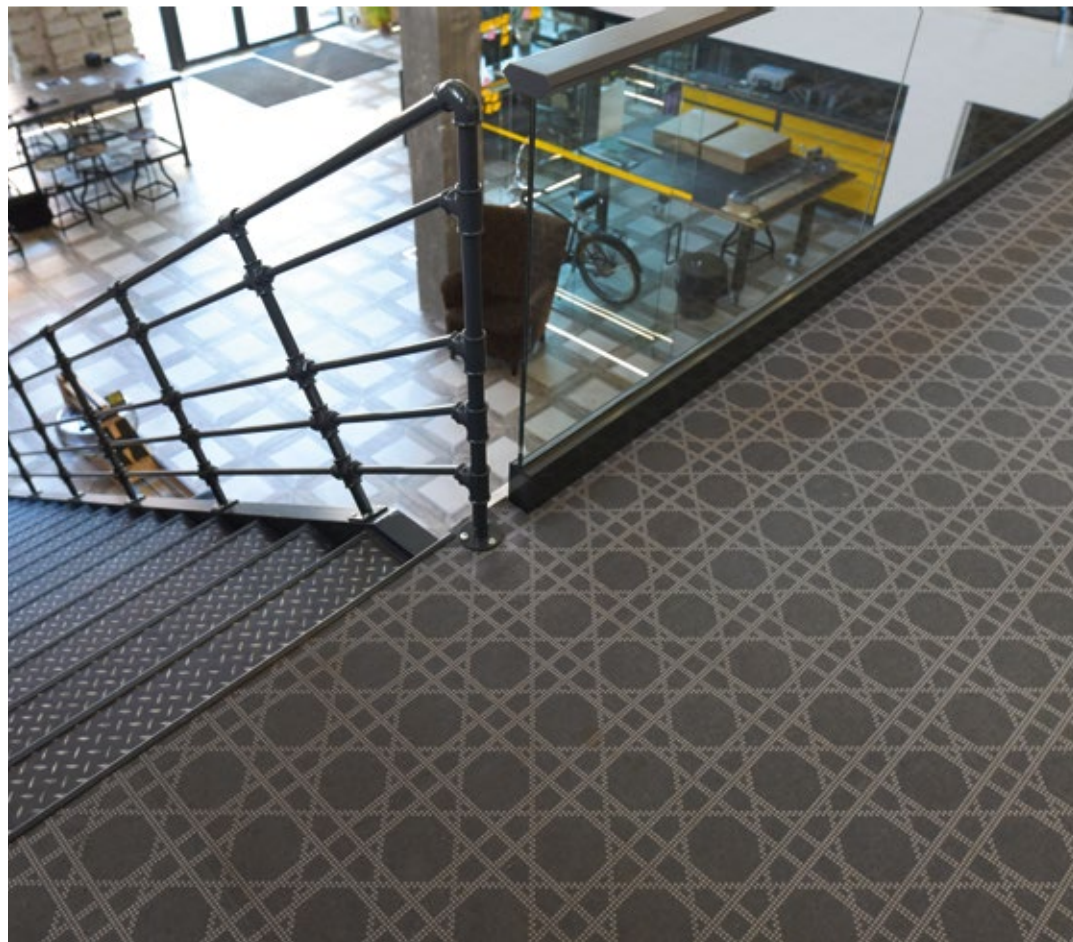






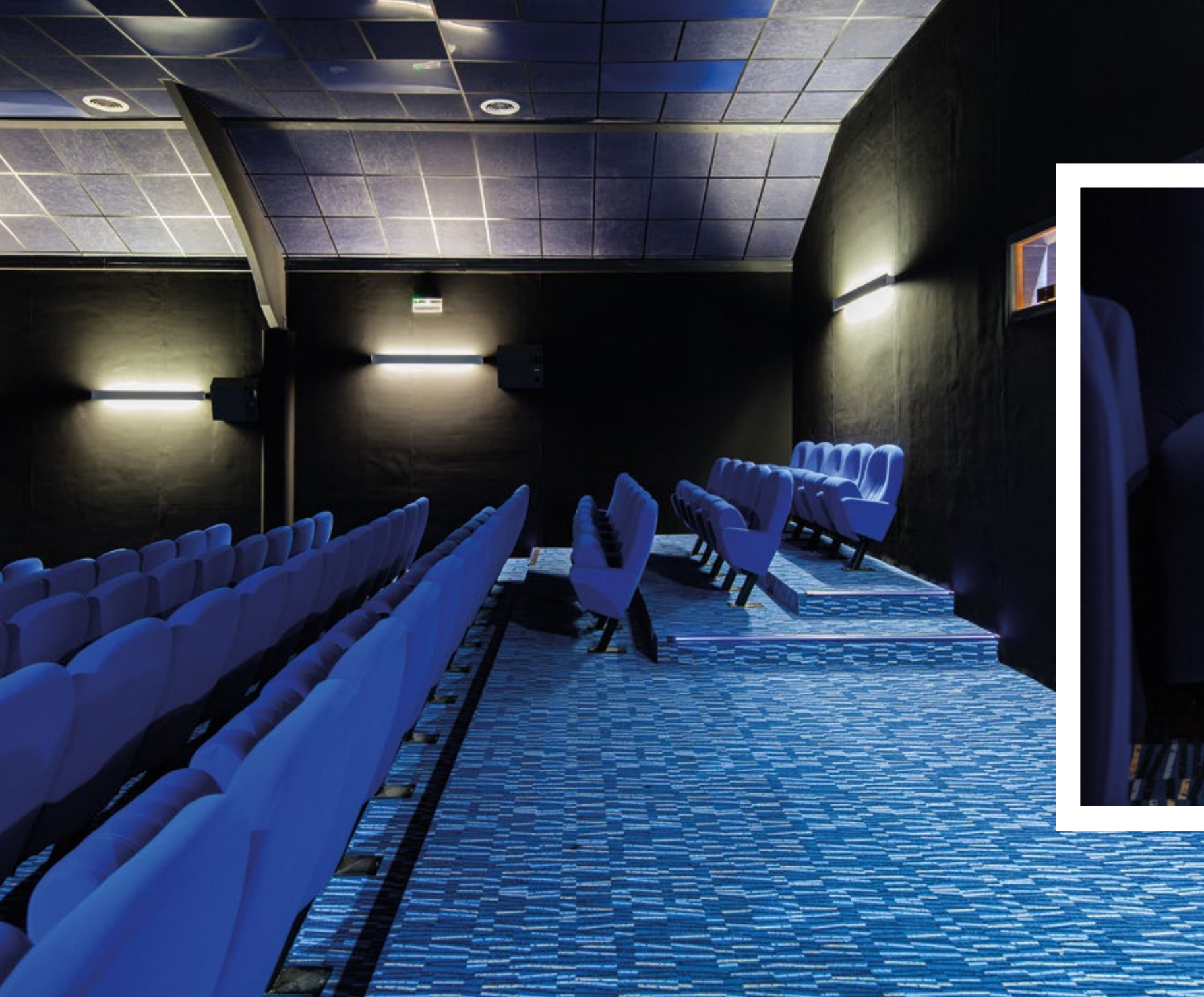
The kids club at **Hôtel Barrière le Normandy**, Deauville, France, was designed using bespoke Flotex for a highly innovative, fun and practical flooring solution for children's activities.





Creative agency, **Uddo & Velvet** chose Flotex Vision Shape Weave 860001 | Zinc for their office refurbishment in Estonia.





The interior of **Cinéma le Cotentin** in Carentan, France was designed using Flotex Vision Lines Vector in a bespoke colourway to complement the vibrant blue seating.

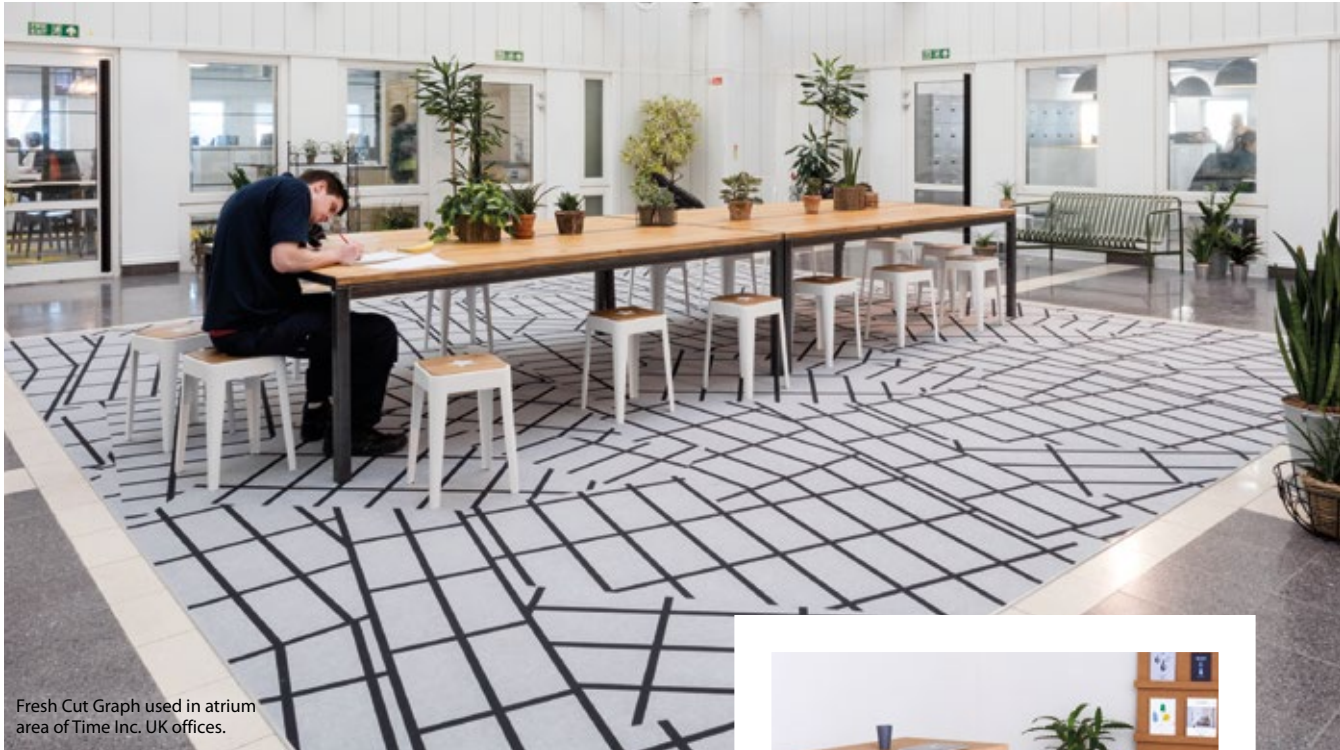




This car manufacturer installed Flotex Vision Image 000348 | cobblestone and Flotex Naturals 010039 | European White Wood to create an inviting dining space for staff.



World renowned designers love  
the *Art* of **FLOCKING**



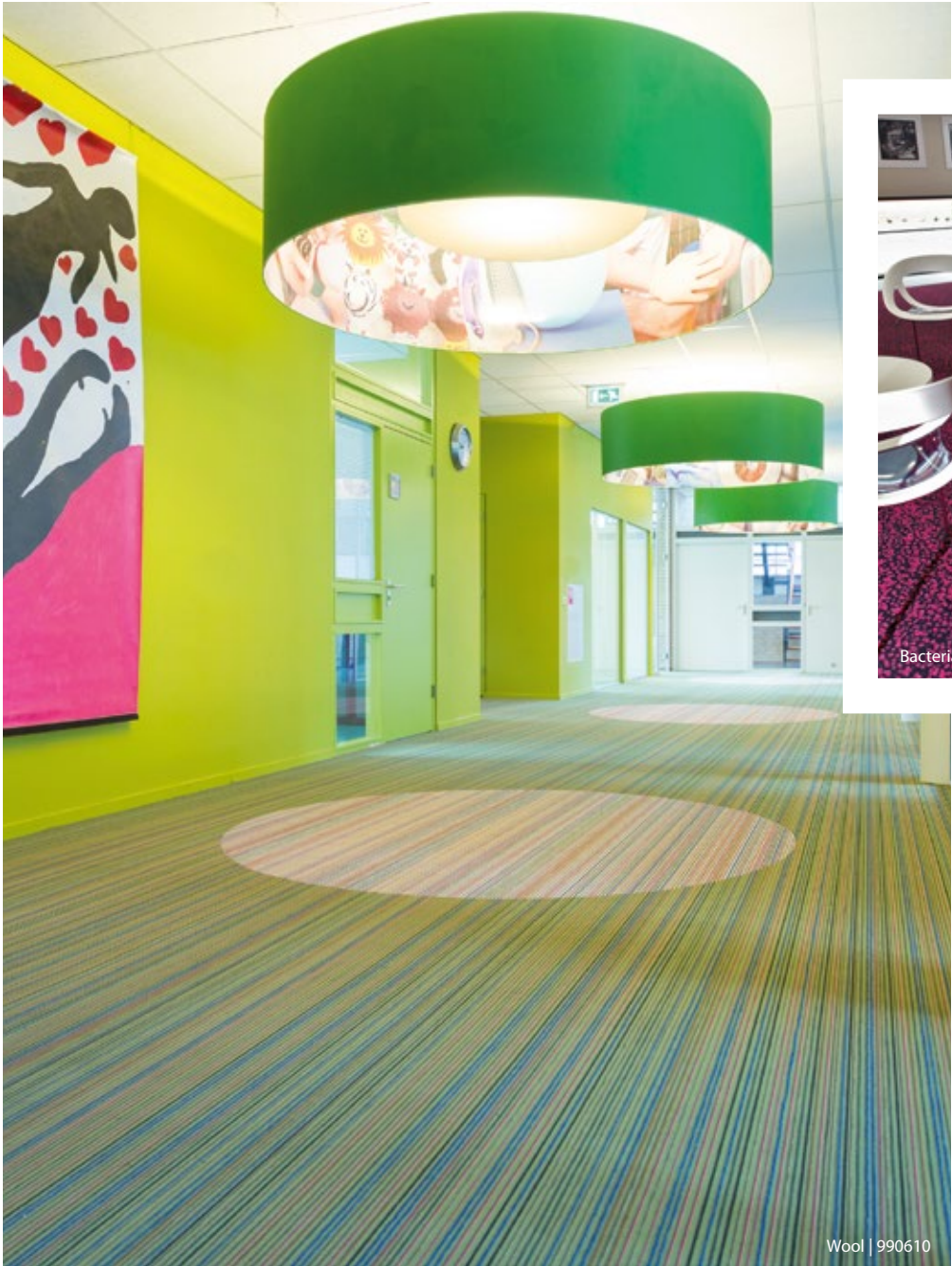
Fresh Cut Graph used in atrium  
area of Time Inc. UK offices.

Flotex Designer Collaboration –  
**HemingwayDesign**

The HemingwayDesign x Forbo Flooring  
collaboration sees existing Forbo product  
re-imagined to create strong, graphic  
patterns and geometrically stimulating  
designs on Flotex flocked flooring.



Hemingbone



Wool | 990610



Bacteria | 990101

Flotex Designer Collaboration –  
**Sottsass**

This exclusive design collaboration  
between Forbo and Sottsass Associati  
was borne out of the desire to work with  
an innovative flooring technology and  
its precision HD printing brings to life  
the avant-gard designs that clearly  
carry the Sottsass signature.





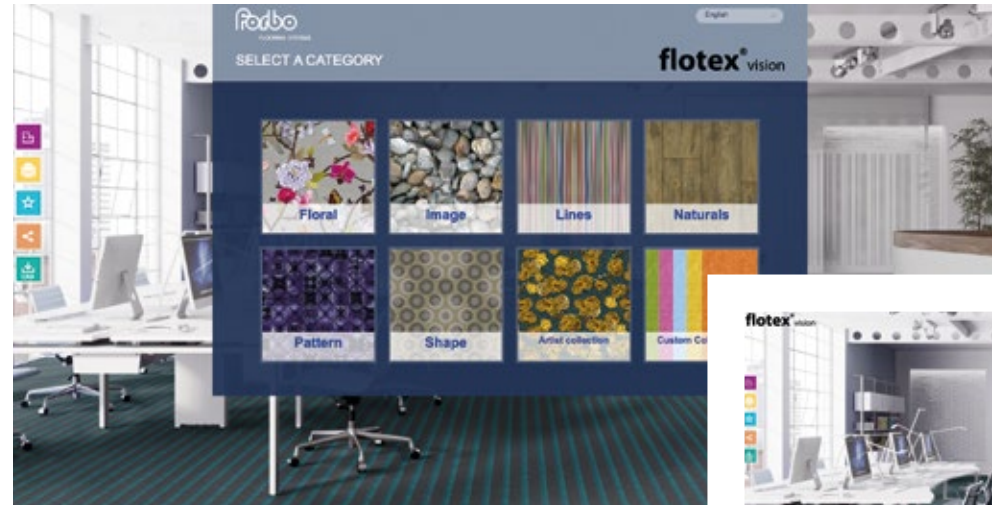
## Flotex Designer Collaboration – Tibor Ltd

Forbo Flooring Systems has teamed up with Tibor Ltd. Tibor Reich, the creator of Tibor, was a man ahead of his time. Although these striking patterns date from the 1950's, they could have been designed yesterday.

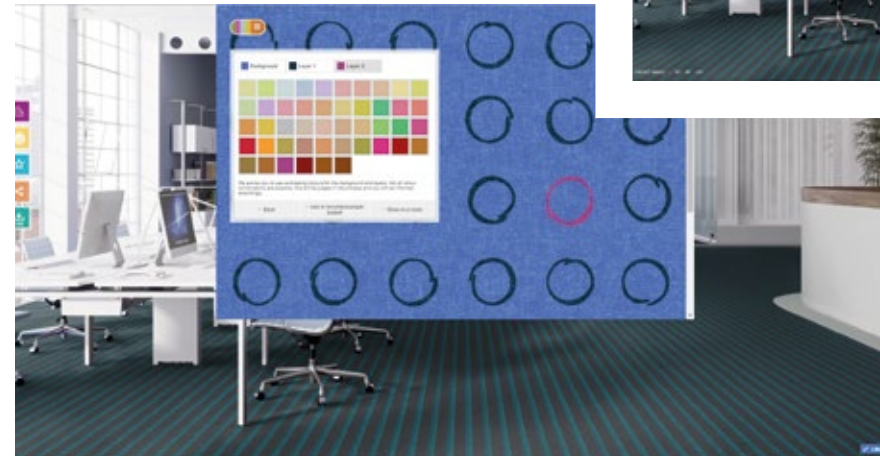


## Flotex Vision *Digital* LIBRARY

Head to [www.forbo-flooring.co.uk/flotexvision](http://www.forbo-flooring.co.uk/flotexvision) to explore our virtual library of over 500 designs and colourways.



Click on a design category to explore our wide range of designs.



See flooring designs in situ with our virtual floor planner.

Use our custom colour tool and recolour existing designs to suit your project interior.



# More **FLOTEX** PRODUCTS

## **flotex**® planks

Adding another dimension to Forbo's modular portfolio, Flotex Planks offer all the benefits of Flotex sheet flooring but with the added benefits of easier installation and reduced waste.

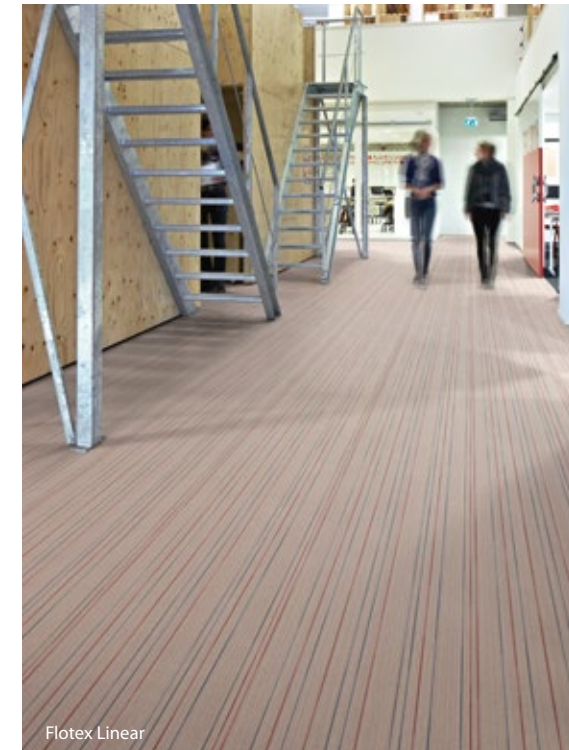
Create interest by using a laying pattern that complements your choice of design and colourway for a stunning floorplan that can be either classic or contemporary in style.



## **flotex**® colour

Three versatile and fresh designs make up the Flotex Colour collection: Metro, Calgary and Penang. Together they offer a range of 110 unique colourways, all available in sheet and tile and all complemented by 26 Artline borders.

Flotex Colour ranges have no pattern repeats and all tiles can be fitted broadloom, tessellated and brick.

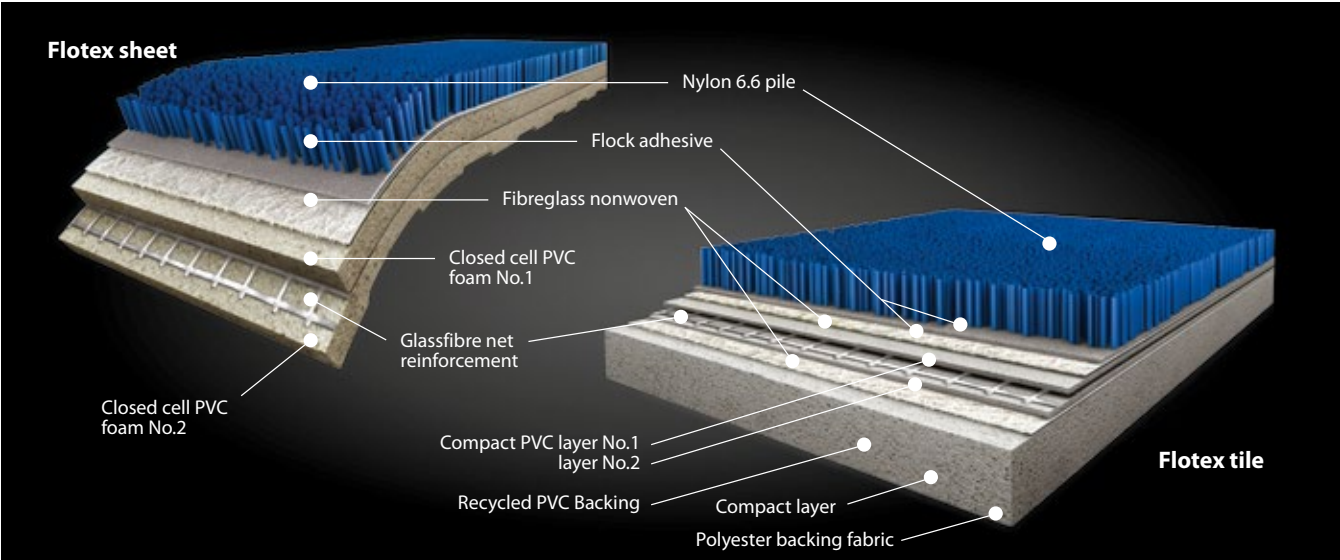


## **flotex**® linear

This collection presents a comprehensive choice of five linear designs in various colourways that complement commercial and educational environments, but also deliver playful effects for leisure, hospitality or retail spaces.



Flotex Construction



- Straight Nylon 6.6 fibres (flock) capture fine dust and allergens which are easily released when vacuumed
  - 70 million fibres per m² deliver an extremely durable and slip resistant surface
- Cushioned backing provides comfort and acoustic performance
  - Impervious backing makes Flotex suitable for mechanical wet cleaning
  - Double strength glass fibre reinforcement results in excellent dimensional stability
- Flotex sheet contains approximately 20% recycled content
  - Flotex tile and plank contain approximately 52% recycled content

How does Flotex compare to other textile floor coverings?

	Flotex	Loop pile carpet tile	Cut pile carpet tile	Needlefelt sheet
Durability	● ● ● ●	● ● ●	●	● ●
Cleanability	● ● ● ●	●	●	●
Ease of installation (tile)	● ● ● ●	● ● ● ●	● ● ● ●	●
Hygienic and ‘Allergy UK’ approved	● ● ● ●	–	–	–
Impermeability (sheet)	● ● ● ●	–	–	–
Repairs to damage	● ● ●	● ● ● ●	● ●	–
Impact sound reduction	● ● ●	● ● ● ●	● ● ● ●	● ● ●
Underfoot comfort	● ●	● ● ●	● ● ● ●	●

Technical Specification

Flotex sheet, tile and planks meet the requirements of EN1307.

		flotex® colour	flotex® artline border	flotex® linear	flotex® planks	flotex® vision flotex® designer collections
Dimensions: Sheet		Roll width 2m Roll length ≤ 30m	Roll width 11/22cm Roll length ≤ 15m	Roll width 2m Roll length ≤ 30m	–	Roll width 2m Roll length ≤ 30m
Dimensions: Tile		50cm x 50cm (3m² per box)	–	50cm x 50cm (3m² per box)	100cm x 25cm (2.5m² per box)	–
Total weight	ISO 8543	Sheet: 1.8 kg/m² Tile: 4.5 kg/m²	1.8 kg/m²	Sheet: 1.8 kg/m² Tile: 4.5 kg/m²	5.4 kg/m²	1.8 kg/m²
Abrasion resistance	EN 1307 annex F	> 1000 cycles	> 1000 cycles	> 1000 cycles	> 1000 cycles	> 1000 cycles
Castor chair continuous use	EN 985	Sheet: r = ≥ 2.4 continuous use Tile: r = ≥ 2.4 continuous use	r = ≥ 2.4 continuous use	Sheet: r = ≥ 2.4 continuous use Tile: r = ≥ 2.4 continuous use	r = ≥ 2.4 continuous use	r = ≥ 2.4 continuous use
Light fastness	EN ISO 105-802	≥ 6	≥ 6	≥ 6	≥ 6	≥ 6
Total thickness	ISO 1765	Sheet: 4.3mm Tile: 5.3mm	4.3mm	Sheet: 4.3mm Tile 5.3mm	5.3mm	4.3mm
Application	EN 1307	Class 33	Class 33	Class 33	Class 33	Class 33
Impact sound reduction	EN ISO 717-2	Sheet: ΔLw = 20 dB Tile: ΔLw = 19 dB	ΔLw = 20 dB	Sheet: ΔLw = 20 dB Tile: ΔLw = 19 dB	ΔLw = 19 dB	ΔLw = 20 dB

Creating Better Environments					
	Renewable Electricity	Flotex is manufactured using 100% electricity made from renewable resources			
	Recycled Content	Flotex sheet contains approximately 20% recycled content by weight Flotex tiles contain approximately 52% recycled content by weight		Flotex Planks contain up to 52% recycled content by weight	Flotex sheet contains approximately 20% recycled content by weight
	Back to the Floor	Installation off cuts can be collected and recycled via Back to the Floor			
	Ska	Flotex meets Ska Rating criteria for M12 soft floor coverings in both office and retail schemes			
	LCA	LCA is the foundation for securing the lowest environmental impact			
	Allergy UK	Flotex is approved by Allergy UK			

CE	EN 14041					
Reaction to fire	EN 13501-1	B <sub>fl</sub> -s1	B <sub>fl</sub> -s1	B <sub>fl</sub> -s1	B <sub>fl</sub> -s1	B <sub>fl</sub> -s1
Slip resistance	EN 13893	DS: ≥0.30	DS: ≥0.30	DS: ≥0.30	DS: ≥0.30	DS: ≥0.30
Body voltage	EN ISO 10965	< 2 kV	< 2 kV	< 2 kV	< 2 kV	< 2 kV

For full, detailed technical specifications on all Flotex products please visit our website [www.forbo-flooring.co.uk/downloads](http://www.forbo-flooring.co.uk/downloads)

Our recommended adhesive for Flotex Sheet is 540 Eurosafe Special or 640 Eurostar Special. For Flotex tiles our recommended adhesive is 542 Eurofix Tack Plus. For Flotex Planks 542 Eurofix Tack Plus is the recommended adhesive. Full technical specifications are available at [www.forbo-flooring.co.uk/downloads](http://www.forbo-flooring.co.uk/downloads)  
Please note: Digital representations may vary from the actual product. Please order a sample to see the full effect. Contact 0800 731 2369.



# NEXT Steps



Flotex Vision Image Pavillion | titanium + Flotex Vision Naturals | blackened oak

Do you need any more reasons to choose Flotex? Head to our website to be inspired by customers who have already chosen this unique, flocked floor covering and explore our collection of over 500 designs and colours. Don't forget to share your Flotex interiors and tell us about your experience.

For more information about Flotex visit: [www.forbo-flooring.co.uk/artofflocking](http://www.forbo-flooring.co.uk/artofflocking)

## #ThankFlockItsFlotex



Forbo offers a quick and free sample service to help you in your decision process. Call **0800 731 2369** or email [samples.uk@forbo.com](mailto:samples.uk@forbo.com)



For more information on our Flotex collection, please visit: [www.forbo-flooring.co.uk/artofflocking](http://www.forbo-flooring.co.uk/artofflocking)



If you would like to speak to one of our experienced sales managers to discuss your project and flooring needs further, simply visit [www.forbo-flooring.co.uk](http://www.forbo-flooring.co.uk) **artofflocking** and fill in our online form and someone will be in touch with you.



Did you know that Forbo offers fully rendered BIM objects? Simply visit Bimstore or NBL to download our objects for free.