



Textile Carpet Tiles

tessera[®] basis pro



50 x 50 cm

creating better environments

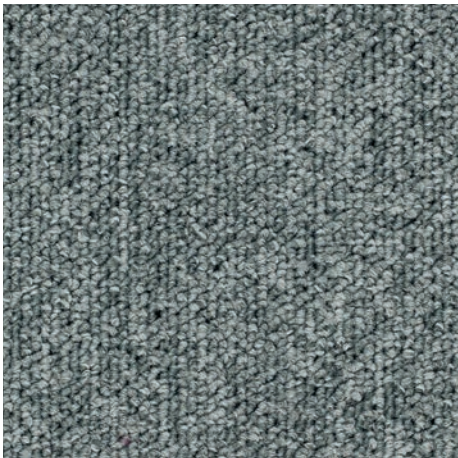
forbo
FLOORING SYSTEMS

tessera[®] basis pro

Basis Pro is the universally selected flooring for a wide range of commercial applications where a reliable, hardwearing textile floor covering is required.

Selected for its practical colour choice, availability and durability, Basis Pro is constructed with 100% solution dyed yarn, and is the trusted choice for installations in education, office and other commercial sectors.

- **Low level loop pile carpet**, creating a universally appealing and robust surface finish for commercial installations
- Available in a diverse **palette of 32 colourways** in classic, contemporary and vivid tones to co-ordinate seamlessly with any interior scheme
- **50x50cm** tile format which can be laid monolithic, quarter turn or tessellated
- Tufted in **100% Polyamide solution dyed yarn**, for improved colour fastness and durability.
- **Class 33** for Heavy Commercial use
- Contains **62% recycled content** by weight
- **Easily combined with Allura Flex** vinyl planks and tiles using the same adhesive and Allura Ease adhesive free options, without the need for transition strips, additional profiles, or inconvenient build-up of the sub-floor
- Also available in **SOFTbac[®]** secondary backing.



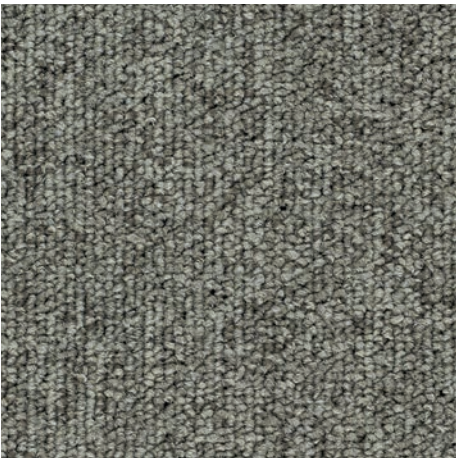
4376 | mercury

LRV 21%



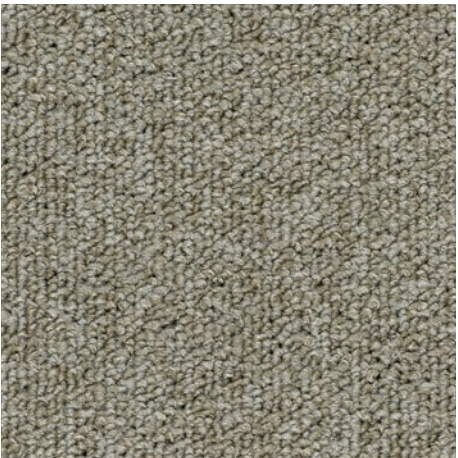
4379 | suede

LRV 18%



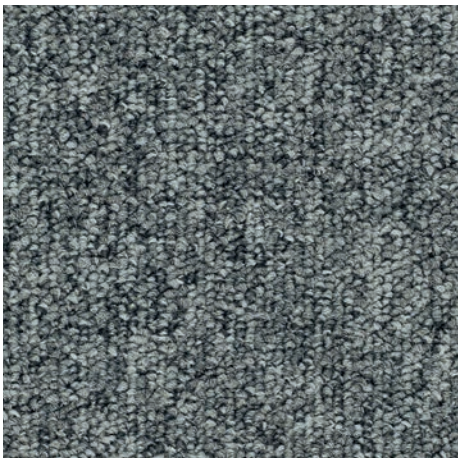
4207 | ecru

LRV 20%



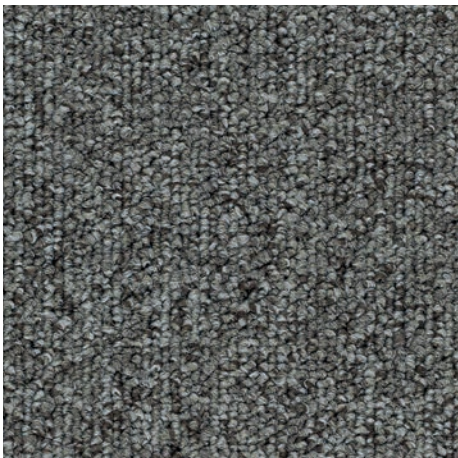
4211 | sandy

LRV 27%



4358 | light grey

LRV 16%



4372 | seal

LRV 14%



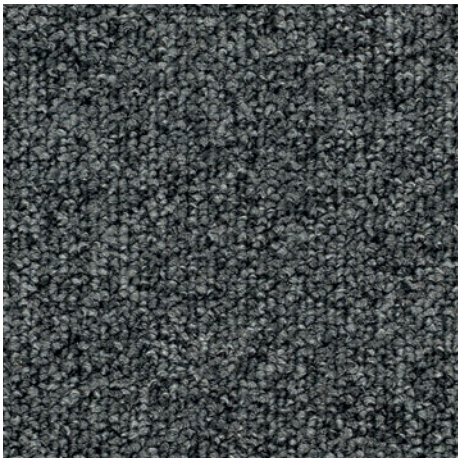
4206 | olea

LRV 17%



4368 | beige

LRV 22%



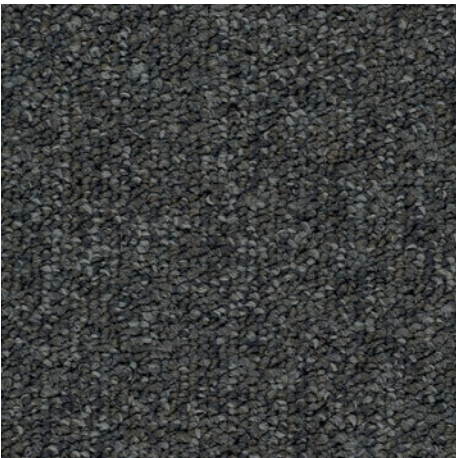
4357 | mid grey

LRV 11%



4208 | dusk

LRV 10%



4203 | cobblestone

LRV 9%



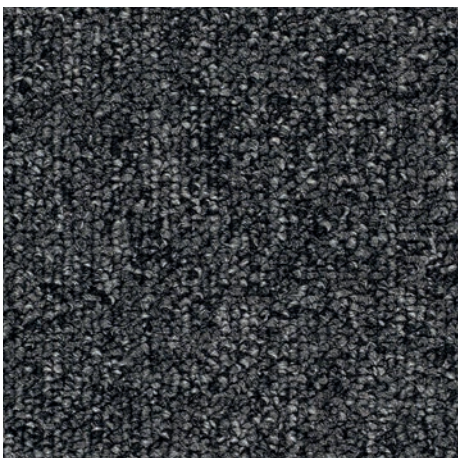
4378 | malt

LRV 16%



4354 | dark grey

LRV 8%



4351 | jet

LRV 7%



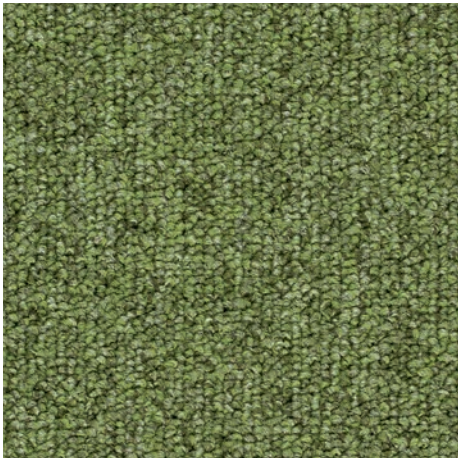
4364 | brown

LRV 10%



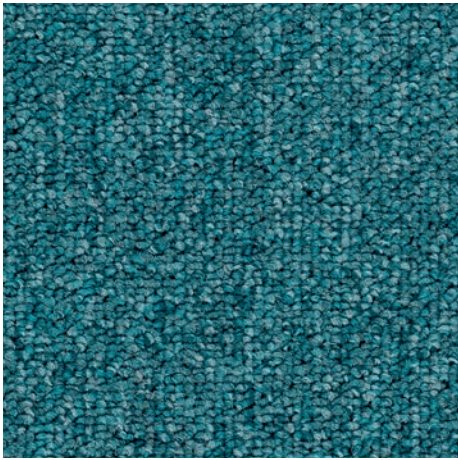
4384 | sable

LRV 9%



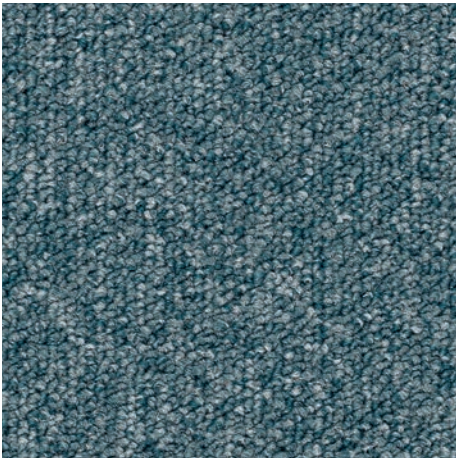
4388 | meadow

LRV 17%



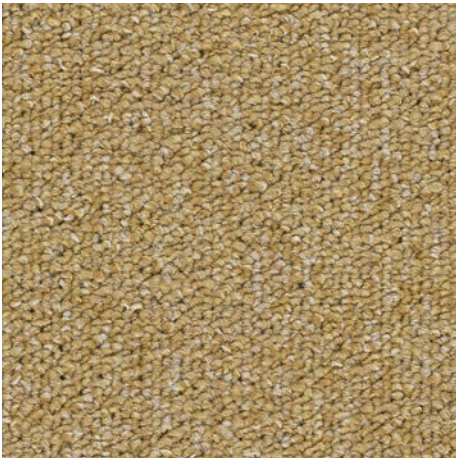
4385 | neptune

LRV 14%



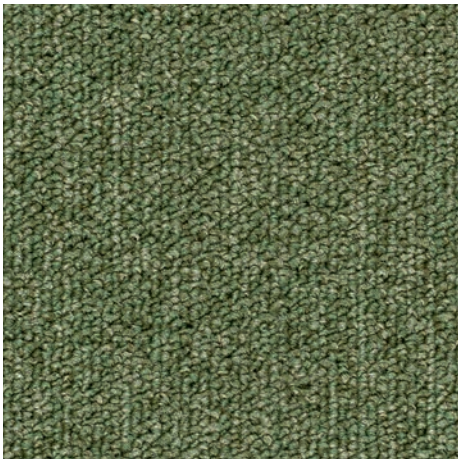
4204 | blue moon

LRV 14%



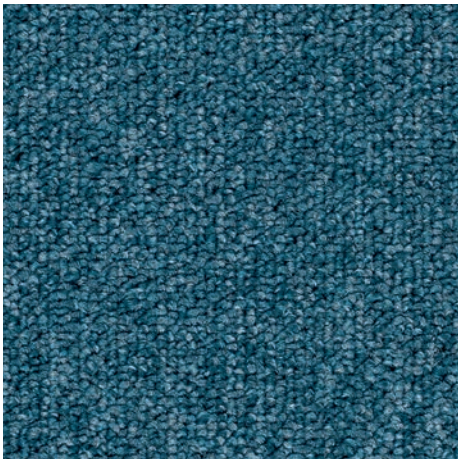
4202 | buttercup

LRV 27%



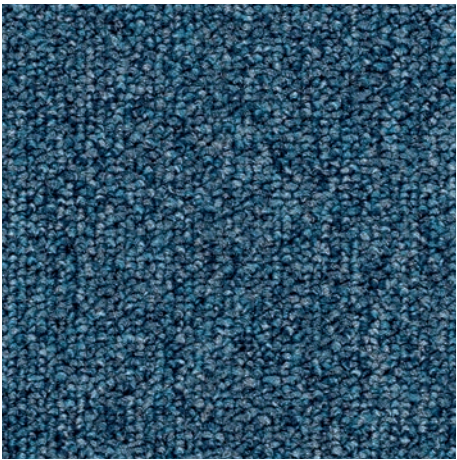
4201 | sage

LRV 16%



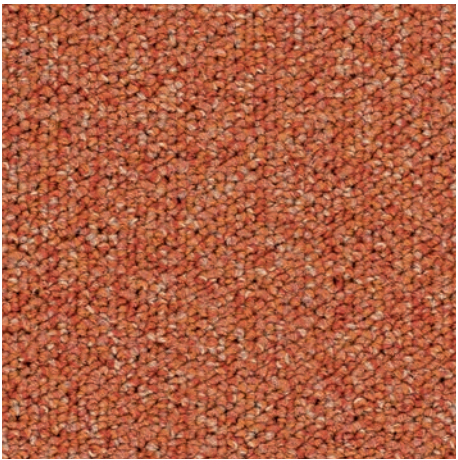
4356 | mid blue

LRV 11%



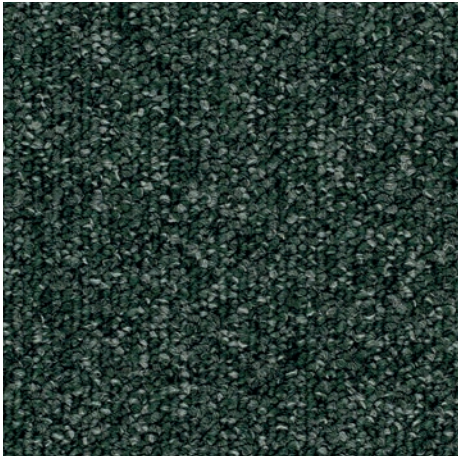
4123 | midnight blue

LRV 11%



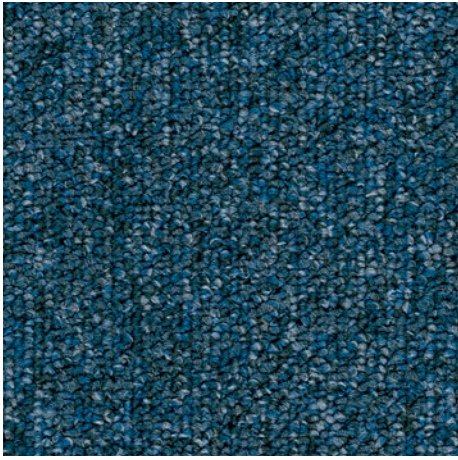
4209 | clementine

LRV 17%



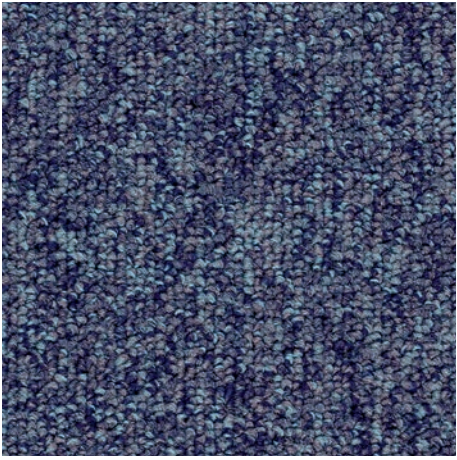
4386 | foliage

LRV 7%



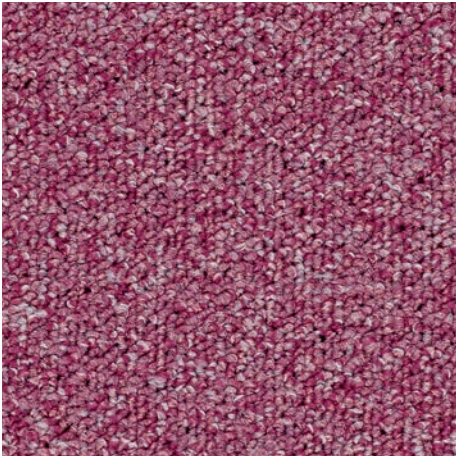
4127 | deep ocean

LRV 8%



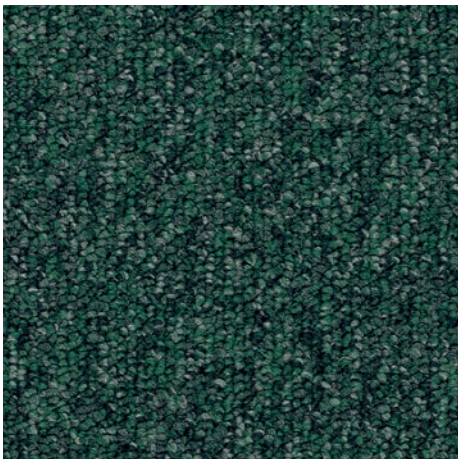
4380 | blackcurrant

LRV 11%



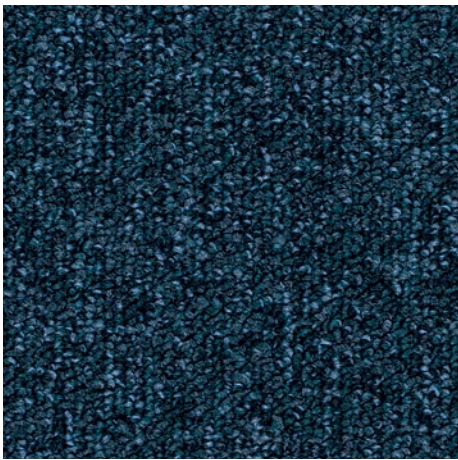
4210 | cerise

LRV 15%



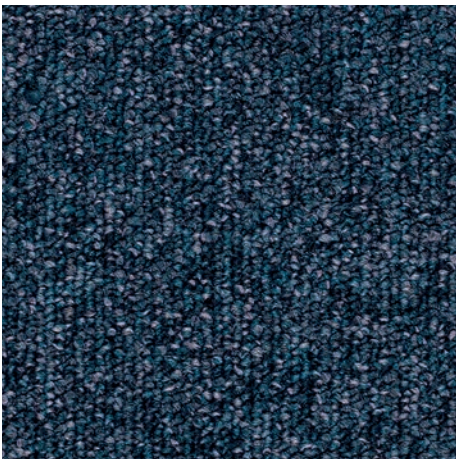
4132 | arctic green

LRV 7%



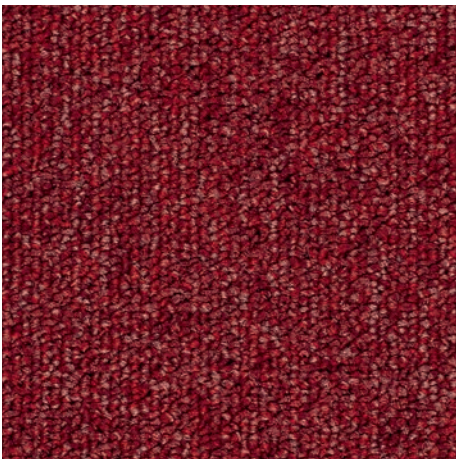
4352 | navy

LRV 5%



4122 | night sky

LRV 6%







4205 | chilli

LRV 7%








Technical specifications

Basis Pro carpet tiles meet the requirements of EN 1307

	Description	Tufted low loop pile carpet tile	
	Tile size	EN 994	50 cm x 50 cm
	Total thickness	ISO 1765	5.7 mm
	Pile height	ISO 1766	2.8 mm
	Collection size	32	
	Packaging per carton of tiles	20 (5 m²)	
	Commercial use	EN ISO 10874	Class 33, Suitable for any type of heavy contract application
	Pile composition	100% Aquafil polyamide 6	
	Dye method	100% solution dyed	
	Stitch density	ISO 1763	197,000 per m²
	Pile weight	ISO 8543	540 gsm
	Total weight	ISO 8543	3855 gsm
	Primary backing	Polyester	
	Secondary backing	ProBac™ recycled mineral filler with low amount of modified bitumen and polyester fleece. Contains over 76% recycled content.	
	Acoustical impact noise reduction	ISO 717-2	25 dB
	Acoustical sound absorption	ISO 354	αw = 0.15 (H)
	Castor chair continuous use	ISO 4918	≥ 2.4
	Colour fastness to light	EN ISO 105-B02	≥ 5
	Indoor air emissions: TVOC after 28 days	EN 16516	≤ 0.1 mg/m³
	Dimensional stability	EN 986	≤ 0.2%
	Creating Better Environments		
	Renewable Energy	All Tessera tufted carpet tiles are manufactured using 100% renewable energy (electricity & biogas)	
	Recycled Content	Basis Pro carpet tiles contain 62% recycled content by weight	
	Indoor Air Quality	Basis Pro carpet tiles comply to 01350 Indoor Air Quality Standard	
	Ska Rating	Basis Pro meets Ska Rating criteria for M12 soft floor coverings in office, retail and higher education schemes	
	Installation method	Monolithic, quarter turn or tessellated	

Basis Pro carpet tiles meet the requirements of EN 14041:2004

    	Product code	EN 14041:2004	1170100-DOP-109
	Reaction to fire	EN 13501-1	B _f -s1, G, NCS
	Slip resistance	EN 13893	μ ≥ 0.30
	Body voltage	ISO 6356	< 2.0 kV
	Thermal conductivity	EN 12524	0.06 W/mK

All Forbo Flooring Systems’ sales organisations and manufacturing sites worldwide have certified Quality Management Systems in accordance with ISO 9001. All Forbo Flooring Systems’ manufacturing plants have certified Environmental Management Systems in accordance with ISO 14001. Tessera Basis Pro carpet tiles are manufactured in a facility certified to SA8000* and ISO 45001. The Life Cycle Assessment (LCA) of Forbo Flooring Systems’ products is documented in individual Environmental product declarations (EPD’s) or local building rating schemes such as BREEAM.



Colourway choice

As with any product, colour and design influence the appearance retention of the floor. The level and type of traffic should be considered as part of the process for selecting colourways. Light colours may not be suitable for heavy traffic areas.

Installation and maintenance

Shades may vary from batch to batch and should be checked before installation. Batches should not be mixed in the same location. All Tessera products are to be installed in full accordance with Forbo installation instructions and recognised trade standards.

Our recommended adhesive for our collection of Tessera carpet tiles is 542 Eurofix Tack Plus.

A well designed entrance flooring system will prevent dirt and moisture from being tracked into the building, prolonging the life of the carpet tiles, reducing cleaning, repair and overall maintenance costs. **Forbo Coral and Nuway entrance systems** are independently proven to remove and retain up to 95% of all dirt and moisture entering a building. Please contact customer services for more information.

Regular vacuuming is essential (using a high suction power driven brush vacuum). Spills and surface stains can be removed by sponging with a damp cloth or, for more resistant stains, with a mild detergent solution. For full installation and cleaning and maintenance instructions please go to **www.forbo-flooring.com**

Norway

Forbo Flooring AS
Hagaløkkveien 7
1383 Asker
T: 66 77 12 00
F: 66 77 12 40
info.norway@forbo.com
www.forbo-flooring.no

Russia

Forbo Flooring Russia
19, Leninskaya sloboda, of.29
115280, Moscow
T: 007 495 269 18 21
F: 007 495 269 18 25
moscow-office@forbo.com
www.forbo.ru
www.forbo-flooring.ru

Switzerland

Forbo Flooring SA
Via Industrie 16
CH - 6512 Giubiasco
T: +41 91 850 01 11
F: +41 91 850 01 41
customerservice.ch@forbo.com
www.forbo-flooring.ch

Other countries

Forbo Flooring B.V.
P.O. Box 13
1560 AA Krommenie
The Netherlands
T: +31 75 647 74 77
question@forbo.com
www.forbo-flooring.com