

ADHESIVES

MANDATORY

	Adhesives	Weight	Consumption /m²	Spreader	Waiting time	Opening time	Observation
Coral Tiles	542 Eurofix Tack Plus	10 kg	100 g	A1/roller	30 min (absorbent support) 60 min (waterproof support)	Keeps its properties in time	Very powerful, GREEN (EC1+), plasticizer-resistant fixative.
Coral Glued Down installation	540 Eurosafe Special	13 kg	350 g	A2	20 min	60 min	High-performance technical adhesive.
	640 Eurostar Special	13 kg	250 g	A2	20 min	60 min	GREEN (EC1+), high-performance technical adhesive.
	528 Eurostar All Round	13 kg	250 g	A2	15 min	30 min	Multi-purpose EC1 construction adhesive.

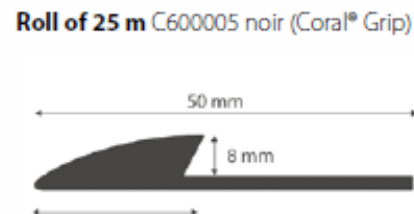
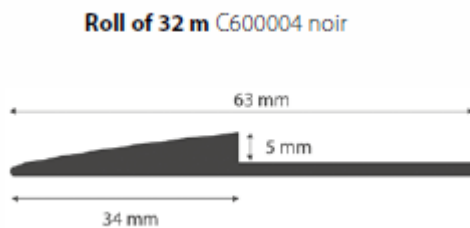
PROFILES

SUGGESTED

Coral transition profile

Ref. : C600004 noir / C600005 noir

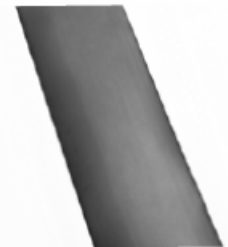
Profile for the edging of Coral® and Coral® Grip entrance mats.
Gluing is done in using a tube of Type C coldwelding.



Coral junction strip

Ref. : C600006 noir

Makes a junction between two Coral® entrance mats by straddling the two mats.
Gluing is done by using a tube of Type C coldwelding.



Roll of 50 m

WELDING

IMPORTANT

Coldwelding : Type C

Ref. : 869501

Type C welding treatment is recommended for sealing under Coral® and Coral® Grip entrance mats.
Consumption : 1 tube for 15m.

Box of 30 tubes of 44g

