



flotex® advance

A UNIQUE
**TEXTILE
FLOOR
COVERING**

creating better environments

forbo

FLOORING SYSTEMS



Code s203110 | tempest

flotex® advance

STYLISH AND PRACTICAL FLOCKED FLOOR COVERING

Flotex is a unique textile floor covering that combines the hard wearing and durable characteristics of a resilient floor with the quality, warmth and comfort of a carpet. Flotex is a strong and hygienic floor, and being completely waterproof, it is also the only truly washable textile floor.

Flotex flocked flooring is the only textile floor covering to be awarded the prestigious Allergy UK Seal of Approval™. Because of its highly dense pile, twice as many allergens are trapped in Flotex's nylon fibres and released upon vacuuming in comparison to conventional carpet. The first textile to be approved by Allergy UK, this unique flocked floor covering is proven to positively impact on the lives of allergy sufferers.

FLOTEX IS A STRONG AND
HYGIENIC FLOOR WHICH IS
COMPLETELY WATERPROOF





flotex® latitude

Offering a calm yet sophisticated aesthetic look, the inspiration for Latitude comes from the transient elements of free-flowing water. Detailing subtle gradients of light and dark the design maintains a fluidity creating modern and effortless comfort to any space.

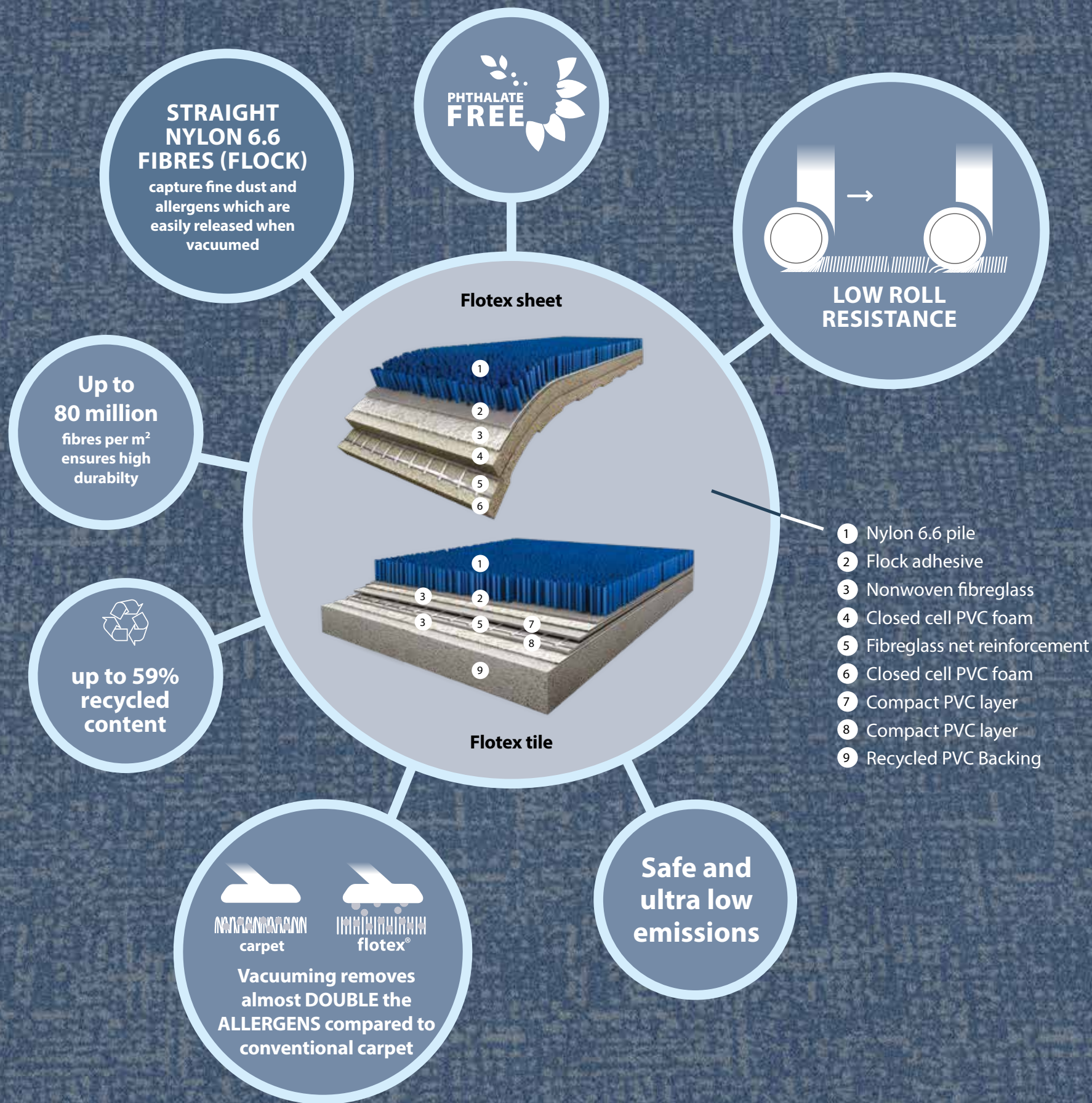
s202037 | grey



flotex® code

Code pays homage to the creativity of the office worker offering a connection to the art of the typewriter, used by many as a means to produce inspirational and innovative design. The interplay of letters and characters layer and overlay to form a unique and abstract pattern.

s203073 | nimbus



flotex[®] THE HIGH-TECH TEXTILE



UP TO 20 dB
IMPACT SOUND
REDUCTION AND 0.10 aw
IN ROOM SOUND
ABSORPTION



EXCELLENT
SLIP RESISTANCE
WHEN WET



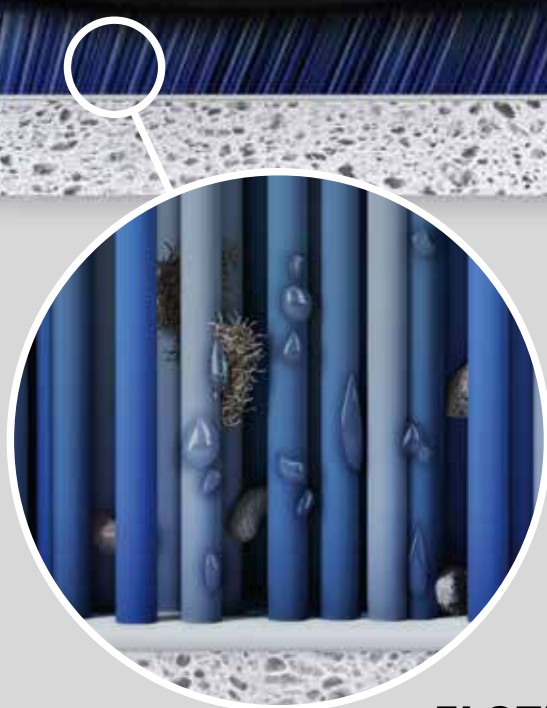
WASHABLE and
WATERPROOF



MECHANICAL
WET CLEANING
POSSIBLE

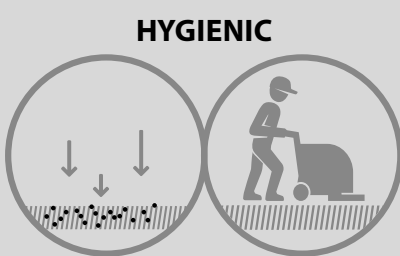


THE ONLY TEXTILE FLOORING WITH
APPROVAL FROM THE BRITISH
ALLERGY FOUNDATION



FLOTEX

Up to 80 million straight nylon fibres per m² are electrostatically flocked into the backing. The unique structure ensures dirt and allergens can be released when vacuumed.



**30% MORE SOIL
RELEASED THAN CARPET**



CARPET

Loop and cut pile carpets have a structure that makes removing allergens and fine dust very difficult in comparison to the smooth, straight and almost upright fibres in Flotex flocked flooring.



FLOTEX NEXT: HIGH-PERFORMANCE FLOCKED FLOORING WITH EASY, ADHESIVE-FREE INSTALLATION, PERFECT FOR BUSY AREAS, REDUCING INSTALLATION TIME AND MINIMIZING DISRUPTIONS.

Code s203018 | nickel s203002 | pewter

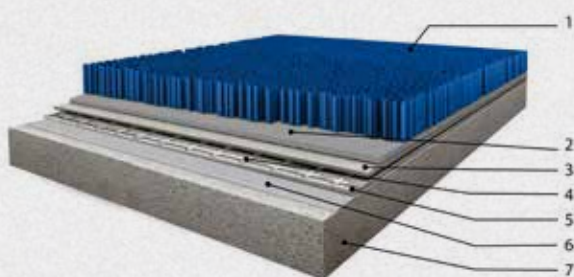
FLOTEX ADVANCE SHEET LOOSE LAY SOLUTION



Fast flooring solution

Flotex advance sheet is made with the Flotex Next backing, that allows both loose lay and glued installation. Not having to use installation adhesive makes Flotex Next very suitable for busy areas: installation time is reduced and there is minimal disruption or lingering adhesive odours. Flotex Next can be walked on immediately after installation. With Flotex Next only a very short time is

needed to prepare the substrate and the installation itself requires a limited number of operations. Only minimal preparation of the subfloor is required and the application of the adhesive and the drying time of the glue do not have to be taken into account. A new floor can be installed with minimal downtime or even without closing the premises.



Product construction

- adhesive free flocked flooring solution
- rapid installation with minimal downtime and disturbance
- can be walked on immediately after installation
- long term benefit of quick removal, replacement and recycling or reuse possibilities

1. nylon 6.6 pile
2. pile adhesive
3. fibreglass #1
4. fibreglass scrim
5. compact layer
6. fibreglass #2
7. closed cell PVC backing

Flotex next standard backing for Flotex advance sheet

The Flotex advance sheet comes as standard with the Flotex Next backing. If required, the Flotex Next can also be glued.

The advantages at a glance

New builds

- Shorter installation times
- No adhesives necessary
- Reduced maintenance and service costs
- Same supplied & fitted price as a glue-down floor covering (initial installation)

Renovations

- Installation while premises are in use without any disruption
- Instantly ready for use after installation
- Possibility of covering old floor tiles (ceramic tiles, compact vinyl, etc.)



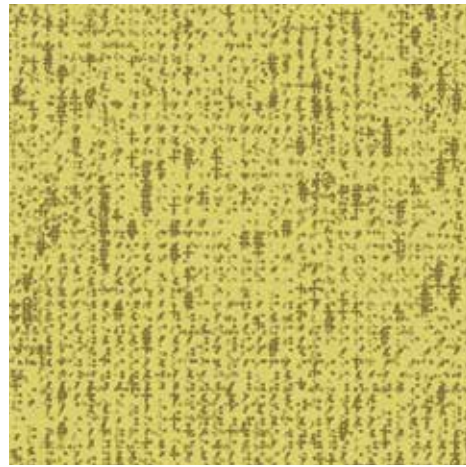
flotex[®] advance

RECOLOURATION **OPTIONS**

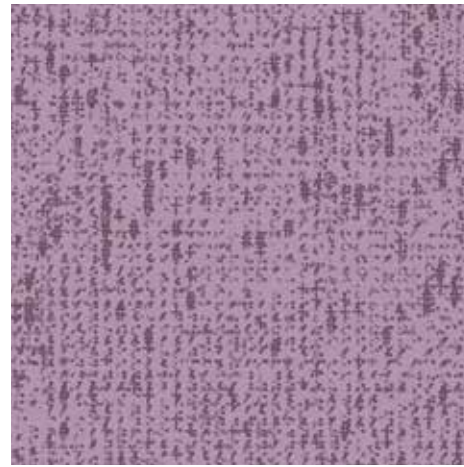
We already created some additional colour possibilities for you to choose from for the Flotex Code design in sheet, so you can order a sample.



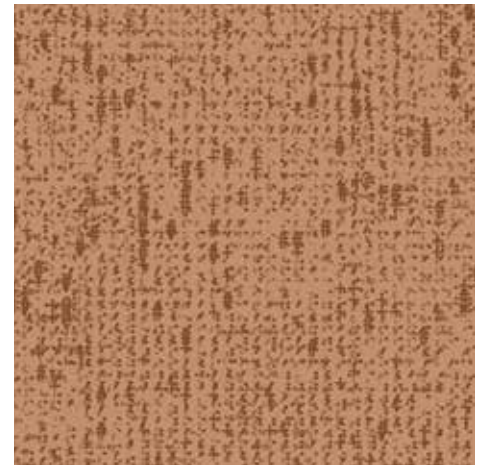
s203011 | pomelo



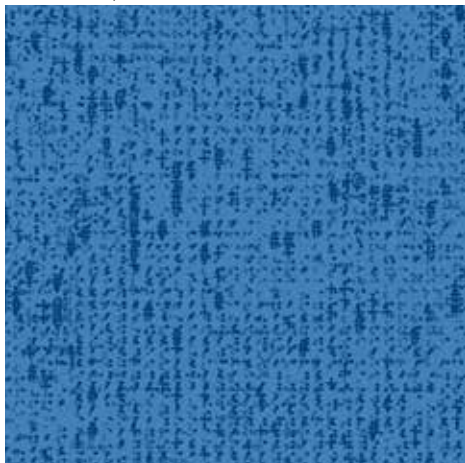
s203012 | lemon



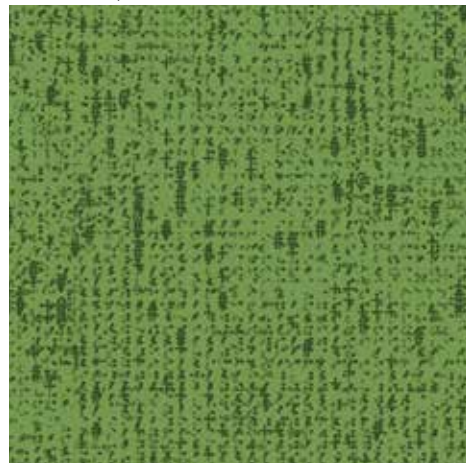
s203013 | rose



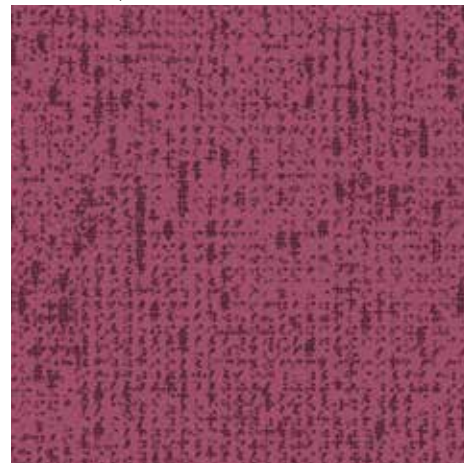
s203014 | pêche



s203015 | iris



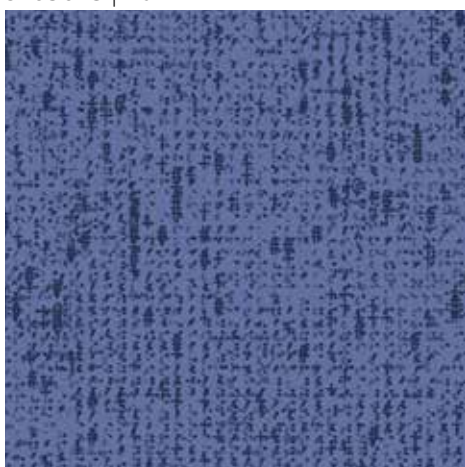
s203016 | romaine



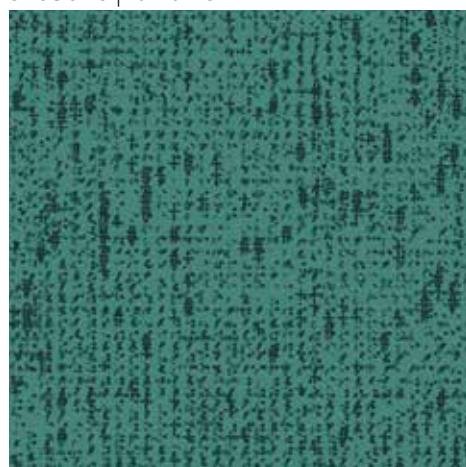
s203017 | cerise



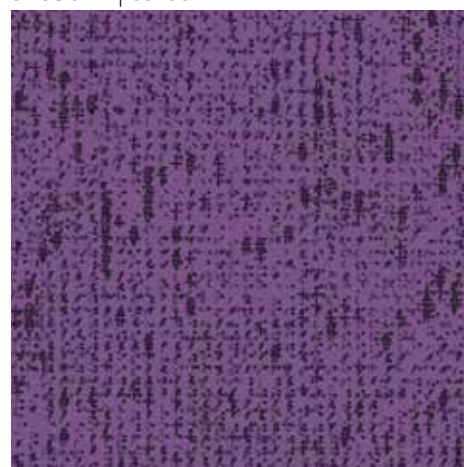
s203022 | tuscan



s203023 | violette



s203019 | sapin



s203020 | crocus



s203021 | ruby

Flotex offers the flexibility to recolour Flotex Code and Flotex Latitude with your own colour, in both sheet and tiles.

1. Contact your local customer service to check minimum order quantity
2. Choose your colour reference in Pantone, NCS, RAL or material samples
3. You receive a sample for approval
4. After your approval your custom floor will be produced.

IF YOU WANT A CUSTOM
COLOUR FOR YOUR
FLOORING, FLOTEX OFFERS
FLEXIBILITY IN MEETING
THOSE NEEDS

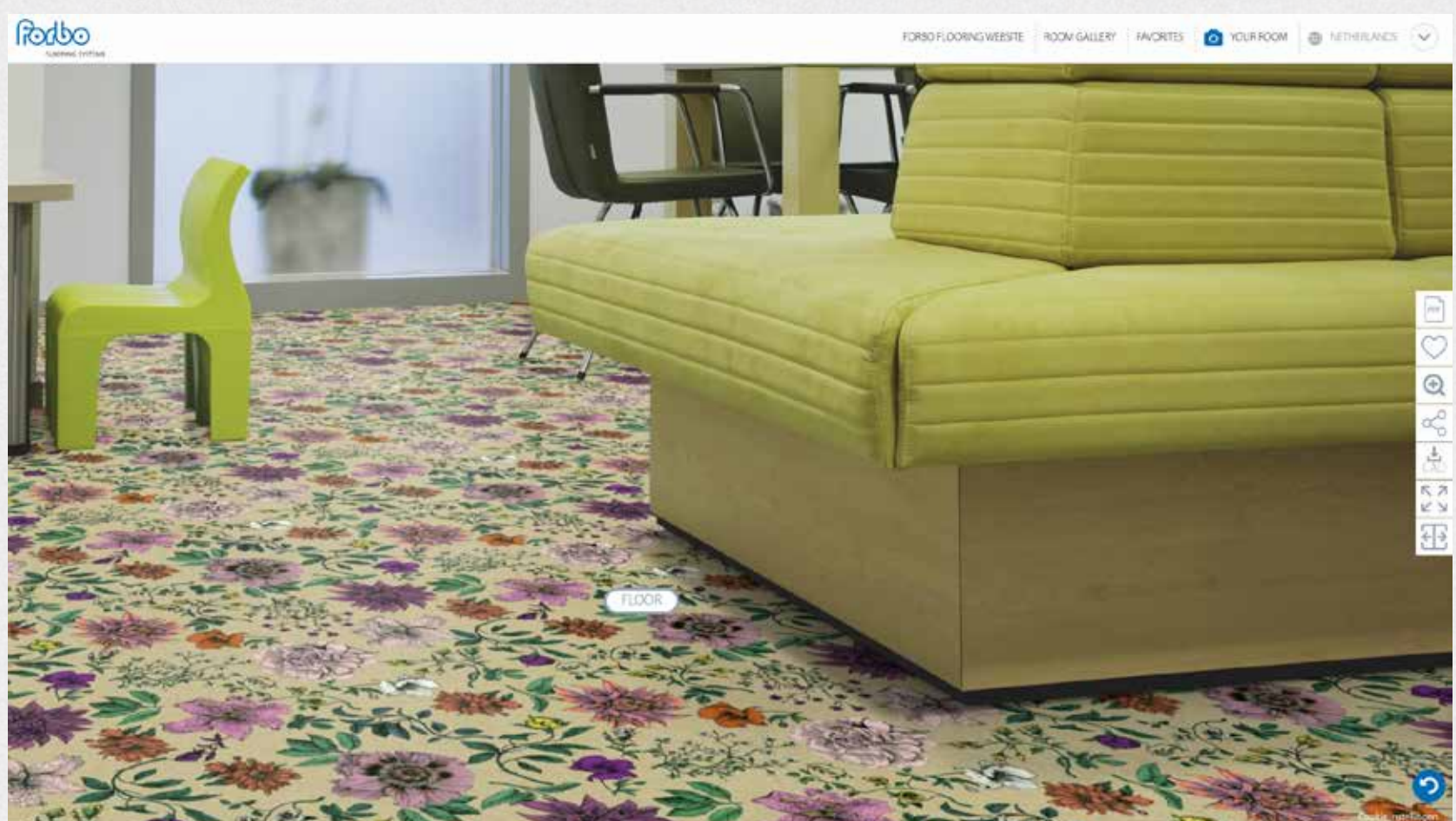




flotex® vision
DIGITAL LIBRARY OF
DESIGN POSSIBILITIES

MORE DESIGN OPTIONS LOOKING FOR FLOTEX VISION

Discover our large digital library with designs and recolouration options for you.
Visit www.flotexvision.com to see endless range of designs.



Go to www.flotexvision.com

211044/232044 | nimbus

211046/232046 | grey

211031/232031 | ash

211110/232110 | tempest

211007/232007 | petrol

211016/232016 | indigo

211096/232096 | electric

211088/232088 | evergreen

211087/232087 | moss

211085/232085 | citrus

211099/232099 | gold

211076/232076 | pebble

211081/232081 | cocoa

211072/232072 | melon

211003/232003 | tangerine

211100/232100 | lilac

211008/232008 | red

211083/232083 | berry

211114/232114 | chocolate



15 m x 11/22 cm

flotex® borders

Our Flotex borders help you to be creative when designing your floorspace by offering the ability to frame an area, separate spaces or provide an edge to your floor with a solid insert. Flotex borders are uni-coloured strips available in 11 or 22 cm width, which can be used in combination with Flotex sheet.

Flotex borders (roll length 15 metres) can be ordered in two width sizes. The first 3 digits of the colour number indicate the width:

211xxx border 11 cm

232xxx border 22 cm



OTHER FLOTEX COLLECTIONS



Flotex Colour



Flotex Planks



Flotex Vision

More information





THE PILLARS OF OUR AMBITION

Three words are at the foundation of everything we do:

Transparency, circularity and renewability

PRODUCT DEVELOPMENT AND DESIGN (PRODUCT DEVELOPMENT WITH CIRCULARITY AND USERS IN MIND)

- Flotex is 100% phthalate free
- Fully transparent choices by using the EPD's which are 3rd party verified, using only 100% safe and traceable REACH compliant materials
- All Flotex products are manufactured with 100% green electricity and have very low product emissions that are below the industry average
- Flotex Advance range has no pattern repeats, reducing installation waste
- Flotex is the only textile covering approved by the British Allergy Foundation as it traps dust and allergens on the surface and releases them with a simple vacuum

SOURCING AND RAW MATERIALS (MAXIMIZING THE USE OF SUSTAINABLE AND RENEWABLE RAW MATERIALS)

- Maximized use of recycled content in all products, Flotex tiles & planks contain up to 59% recycled content and actual content is published in our EPD's
- Controlled supply chain certification -ISO 140001 and 9001 standards and SA8000 for ethical supply chain
- Use of recycled materials back to our own products, all our raw materials meet the strictest health requirements

PRODUCTION AND DISTRIBUTION (CARBON NEUTRAL AND ZERO WASTE PRODUCTION)

- Flotex production is dedicated to the concept of zero waste. 86% of factory waste is recycled
- Flotex is produced in an environment where substantial

reductions of CO2 have been achieved and additional improvements are planned

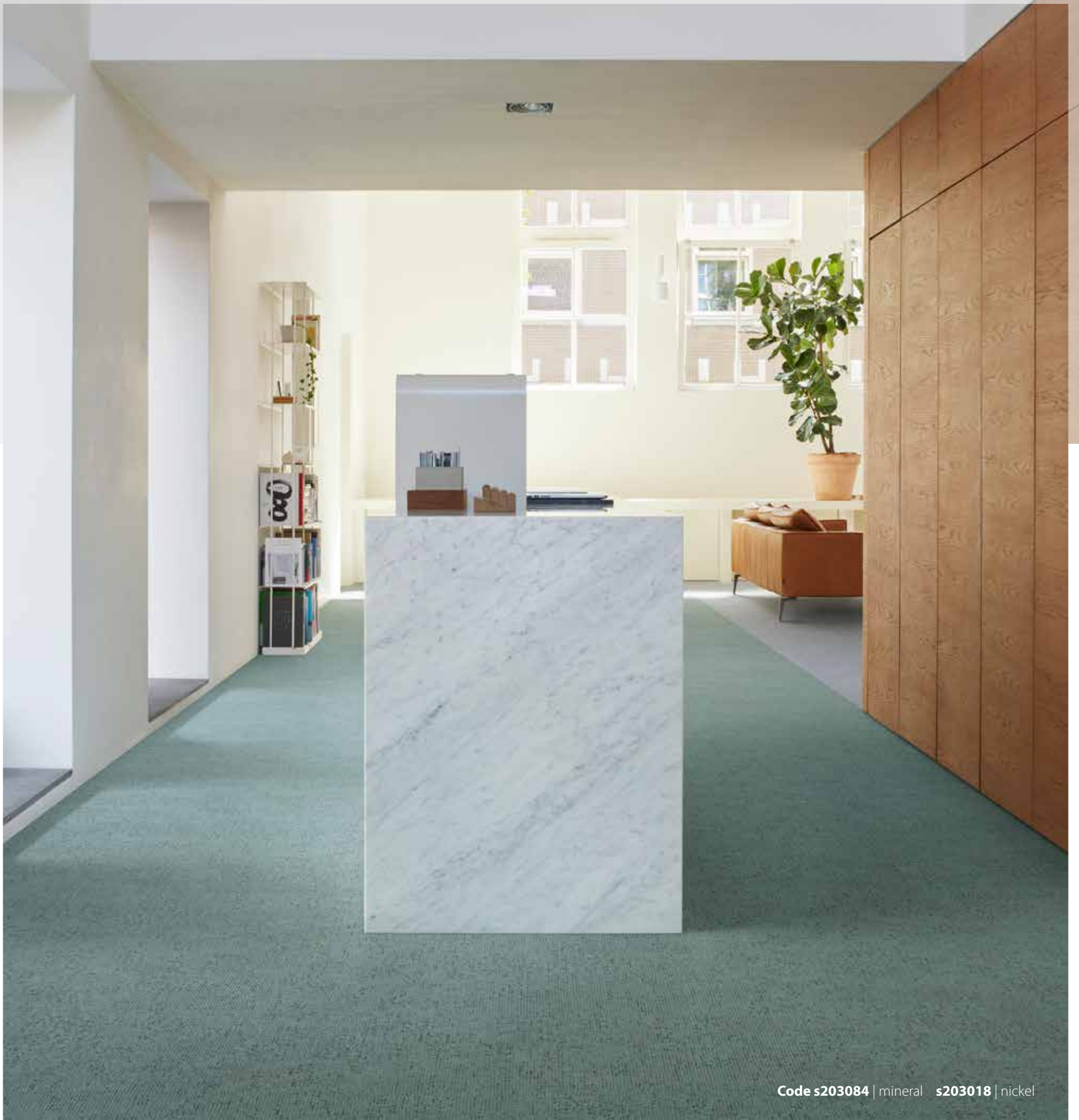
- We have eliminated excess packaging from jumbo rolls of Flotex, which has cut our cardboard usage by 50 tons/year
- We use water-based inks and dyes to manufacture Flotex, no additional chemical processes take place other than high temperature steam treatment to secure the colours

LONG LASTING & EASY TO MAINTAIN (HIGHLY DURABLE AND FIT-FOR-PURPOSE SOLUTIONS)

- Modular installation like Flotex tiles and planks can save time, installation waste, money and the environment
- Forbo Flooring offers compatible Coral entrance flooring to keep Flotex cleaner for longer and reduce cleaning by up to 65%
- Thanks to its hard-wearing properties and durability benefits, Flotex flocked flooring has a product lifetime that surpasses that of ordinary textiles
- The very dense structure of Flotex prevents the penetration of dirt that remains on the surface
- The vertical fibers easily release dust, allergens and dirt

RECYCLING AND END-OF-LIFE (RECREATING VALUE AT THE END)

- Back to the floor projects – returned modular floors can be recycled to close the materials loop
- Sheet products are offered with Flotex next backing option which is a loose lay solution so it can be reused



Code s203084 | mineral s203018 | nickel

flotex® advance **CLEANING** AND MAINTENANCE

Always use an entrance mat such as Forbo Coral to keep as much dirt out of the building and keep the floor looking good for longer.

Spot cleaning

Many kinds of spills can be removed with just clean warm water or a carpet detergent. Heavier and more stubborn spills can be removed using a paint scraper and a brush.



Regular cleaning

Daily vacuuming and regular spot and stain removal keeps Flotex looking like new for years to come.



Maintenance

Periodic maintenance using spray extraction or a 3-in-1 machine (rinse/brush/water) will guarantee the best result on Flotex.

