



BY APPOINTMENT TO H.M. THE QUEEN
SUPPLIER OF FLOORING TO THE ROYAL PALACE
FORBO FLOORING UK LTD KIPKALDY



Textile Carpet Tiles

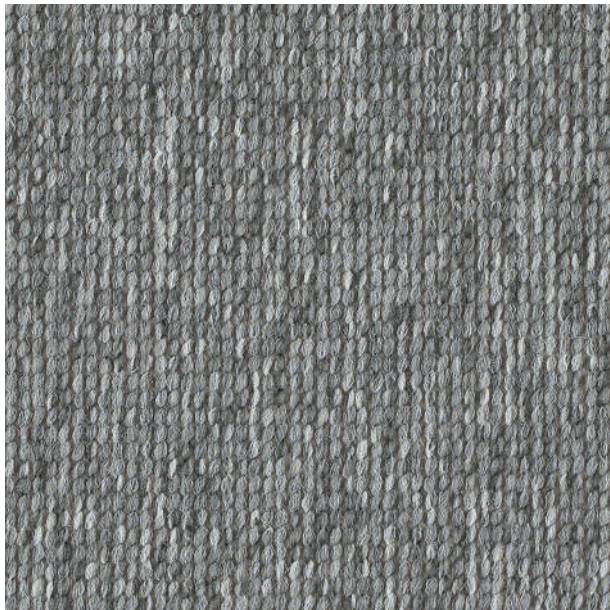
tessera[®] struktur 1



50 x 50 cm

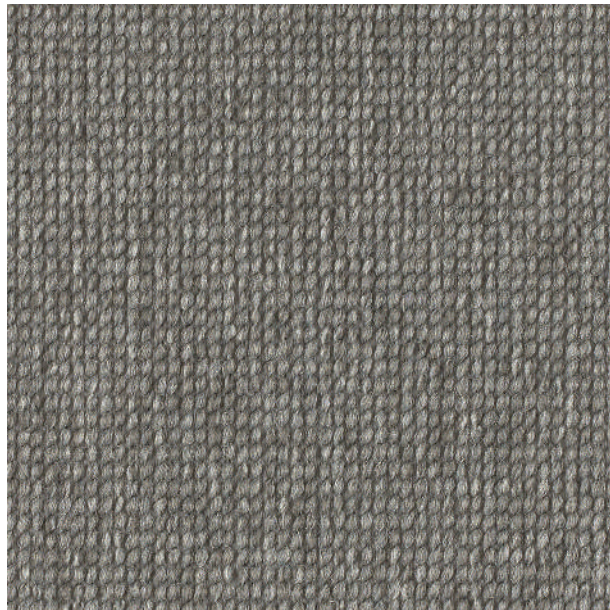
creating better environments

forbo
FLOORING SYSTEMS



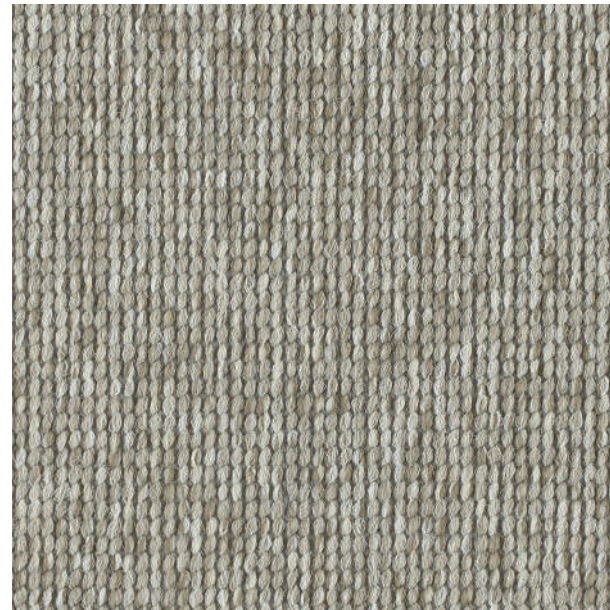
3700 | måne

LRV 19



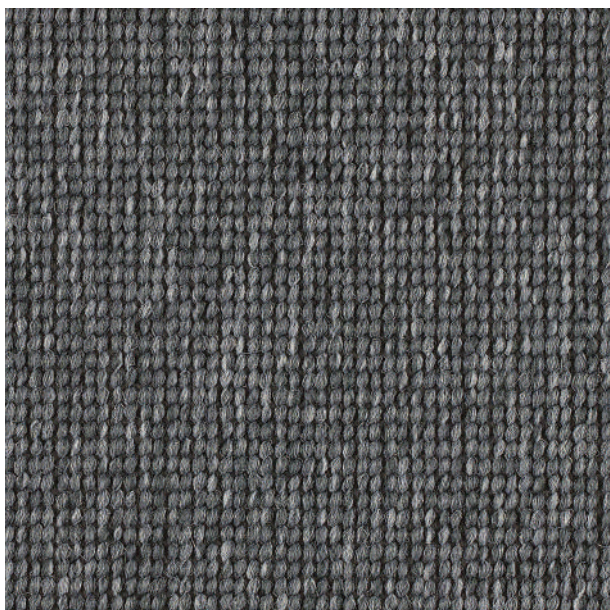
3701 | sten

LRV 17



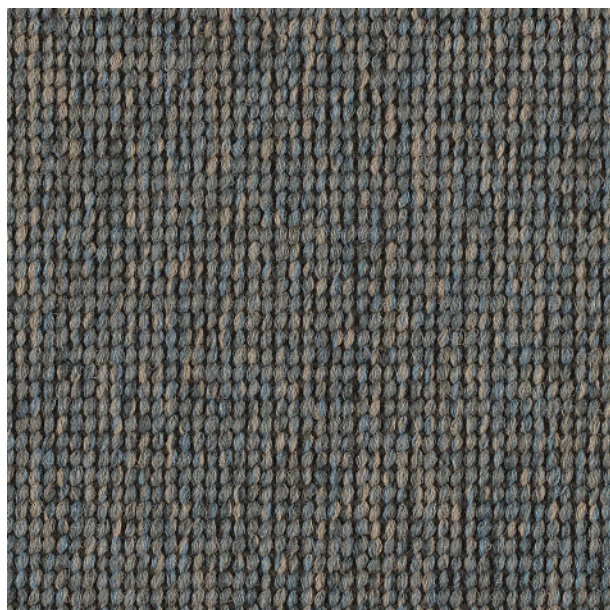
3702 | korn

LRV 25



3703 | grå

LRV 11



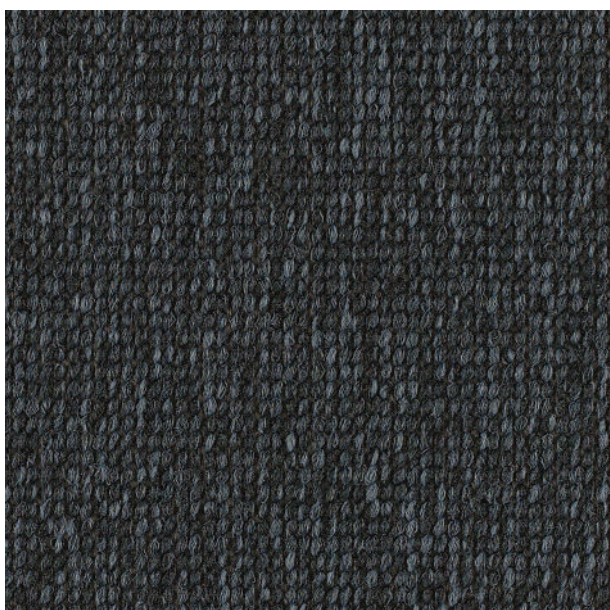
3704 | malm

LRV 11



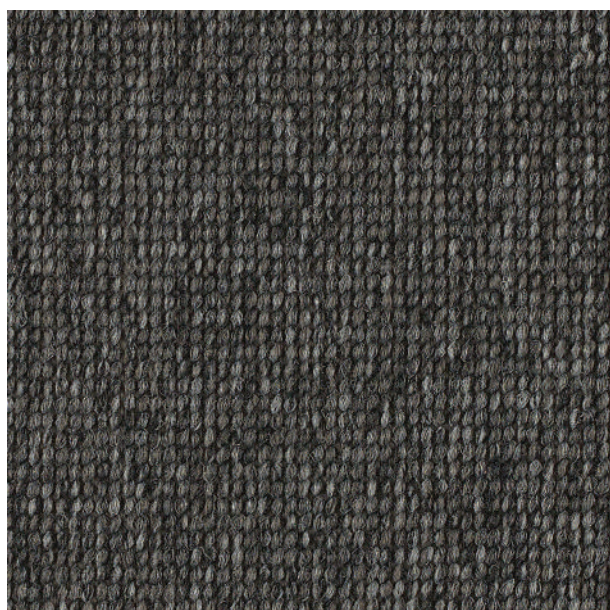
3705 | kaffe

LRV 19



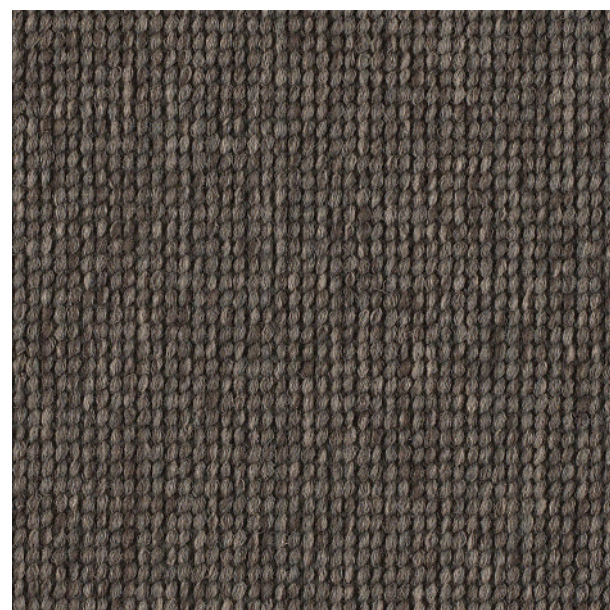
3706 | svart

LRV 7



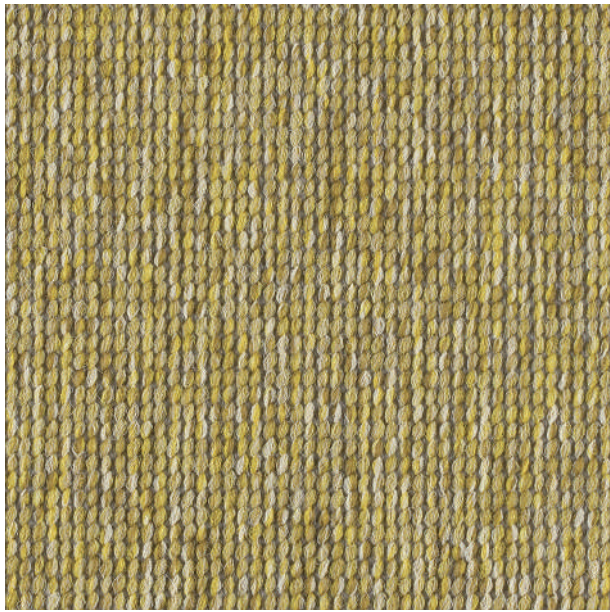
3707 | järn

LRV 8



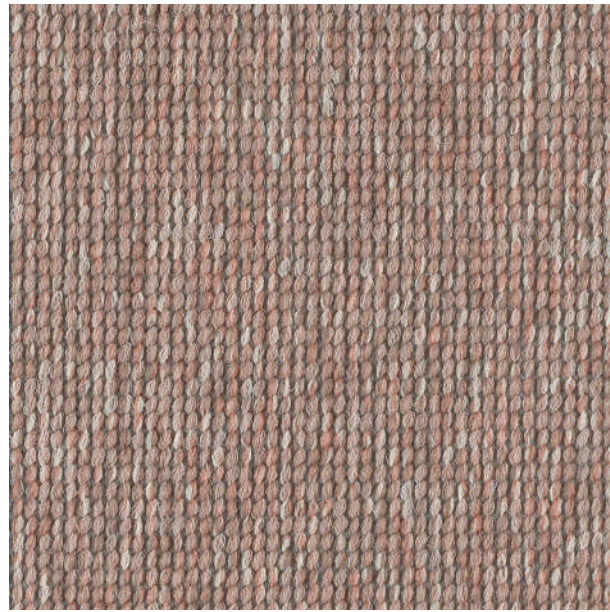
3708 | brun

LRV 8



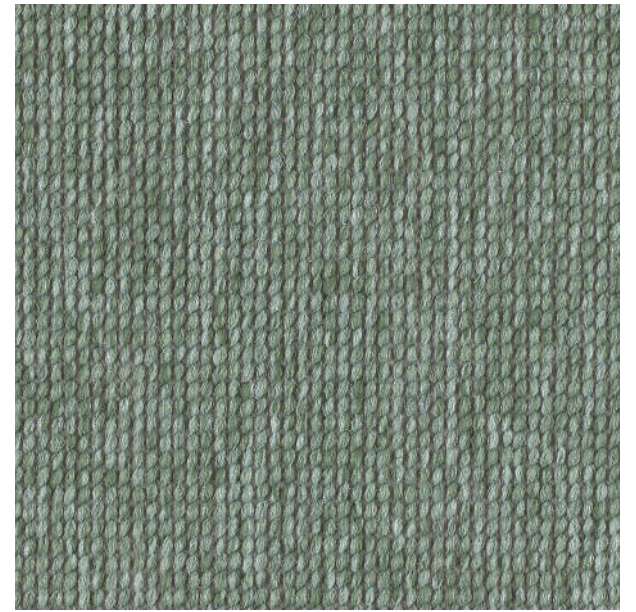
3709 | gul

LRV 27



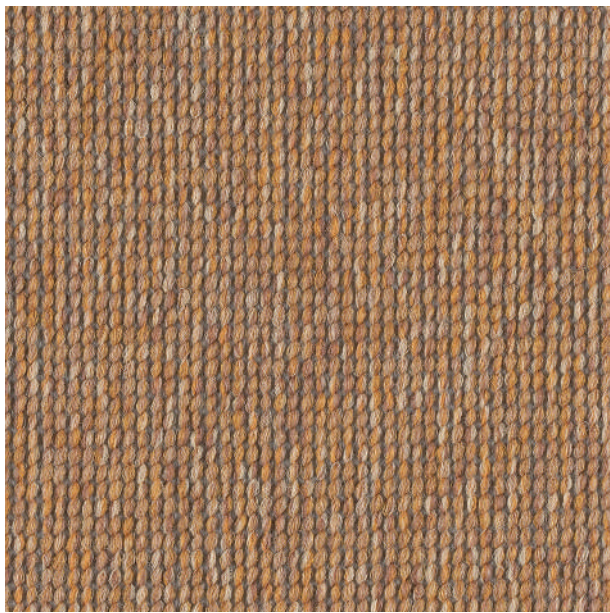
3710 | rosa

LRV 21



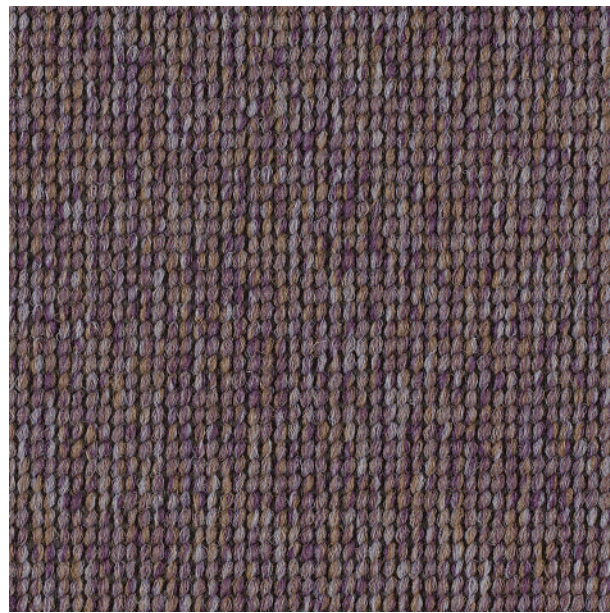
3711 | mossa

LRV 19



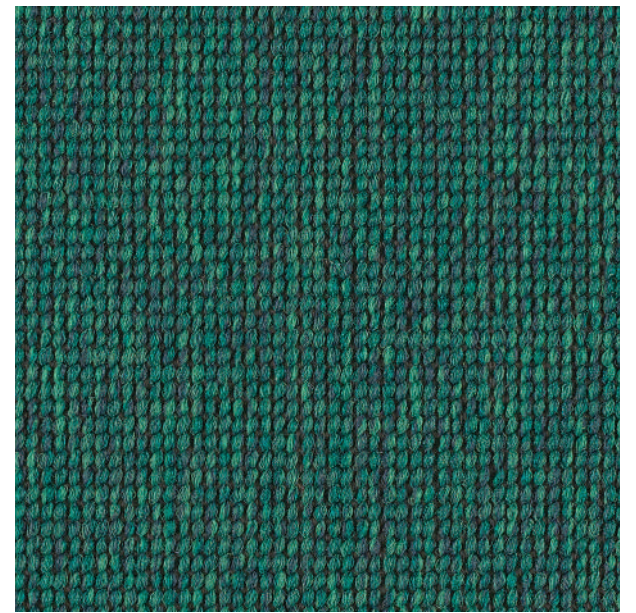
3712 | flamma

LRV 20



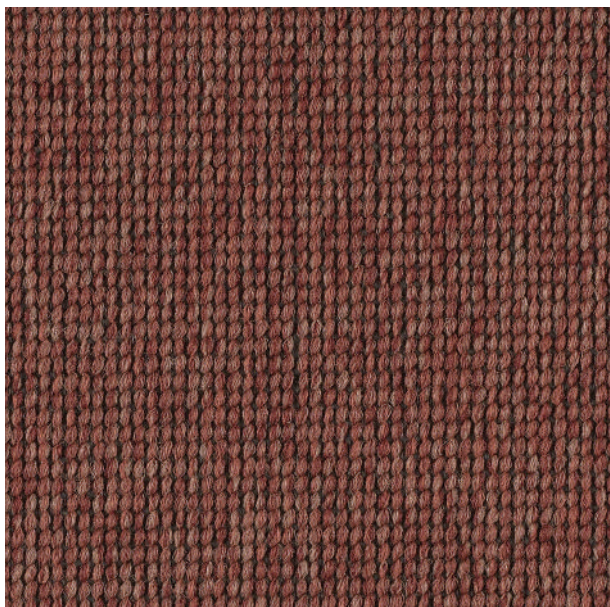
3713 | lila

LRV 10



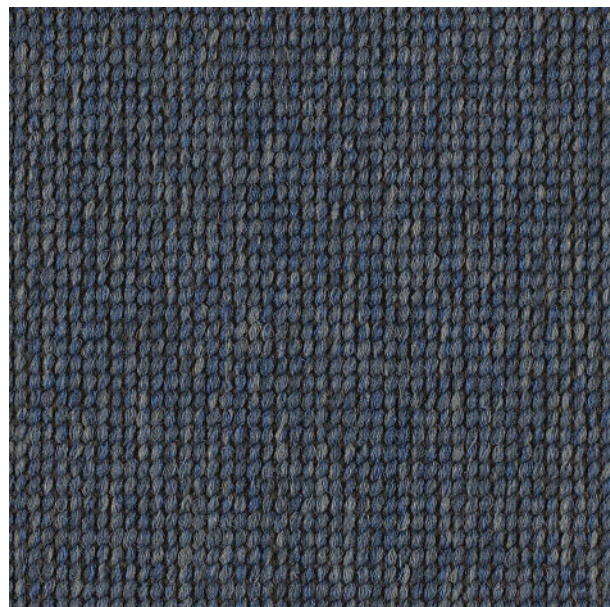
3714 | grön

LRV 8



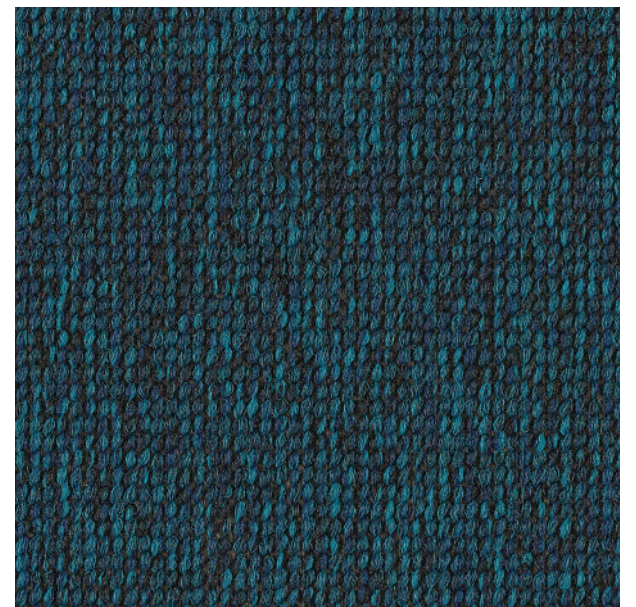
3715 | rost

LRV 9



3716 | blå

LRV 6





















3717 | påfågel






LRV 6

Especificações técnicas

Tessera Struktur 1 cumpre os requisitos de EN 1307

	Descrição	Microtuft carpet tile
	Dimensão do mosaico	EN 994 50 cm x 50 cm
	Espessura total	ISO 1765 5.1 mm ± 10%
	Altura do pêlo	ISO 1766 1.00 mm ± 15% - 10%
	Tamanho da coleção	18
	Embalagem por caixa de cartão mosaico	20 (5 m ² per box)
	Utilização comercial	EN ISO 10874 Classe 33, adequado para qualquer tipo de aplicação de contrato pesado
	Composição do pêlo	100% polyamide 6
	Método de coloração	100% solution dyed
	Densidade dos pontos	ISO 1763 126,080 per m ²
	Peso do pêlo	ISO 8543 350 g/m ² ± 10%
	Peso total	ISO 8543 3765 g/m ²
	Suporte primário	Polyester
	Suporte secundário	Betume modificado ProBac™ e velo de poliéster. Contém mais de 76% de conteúdo reciclado
	Redução do ruído de impacto acústico	ISO 717-2 17 dB
	Absorção sonora acústica	ISO 354 aw = 0.15 (H)
	Cadeira de rodízio de uso contínuo	ISO 4918 r ≥ 2.4 continuous use
	Solidez da cor à luz	EN ISO 105-B02 ≥ 6
	Estabilidade dimensional	EN 986 ≤ 0.2 %
	Emissões para o ar interior: TVOC após 28 dias	EN 16516 ≤ 0.1 mg/m ³
	Criar melhores ambientes	
	Eletricidade renovável	Todos os mosaicos de alcatifa em mosaicos da Tessera são fabricados utilizando 100% de energia renovável (eletricidade e biogás)
	Conteúdo reciclado	Struktur 1 contém 65% de conteúdo reciclado em peso
	Qualidade do ar interior	Struktur 1 carpet tiles comply to 01350 Indoor Air Quality Standard
	Back to the Floor	Back to the Floor - Instalação o os cortes podem ser recolhidos através do nosso programa Back to the Floor
	Classificação Ska	Struktur 1 cumpre os critérios de classificação Ska para revestimentos de piso macios M12 em sistemas de escritórios, comércio e ensino superior
	Método de instalação	Um quarto de volta (a instalação monolítica fica ao critério do utilizador, mas as juntas não visíveis não são garantidas)

Struktur 1 carpet tiles cumpre os requisitos de EN 14041:2004

	Código do produto	EN 14041:2004 1170100-DOP-101
	Reação ao fogo	EN 13501-1 C _n -s1, G, NCS
	Resistência ao deslizamento	EN 13893 μ ≥ 0.30
	Acumulação de cargas eletrostáticas	ISO 6356 ≤ 2.0 kV
	Conductividade térmica	EN 12524 0.06 W/mK

Todas as organizações de vendas e fábricas da Forbo Flooring Systems em todo o mundo têm Sistemas de Gestão da Qualidade certificados de acordo com a norma ISO 9001. Todas as fábricas da Forbo Flooring Systems têm Sistemas de Gestão Ambiental certificados de acordo com a norma ISO 14001. A Tessera Struktur 1 é fabricada numa instalação certificada de acordo com a SA8000® e a ISO 45001. A Avaliação do Ciclo de Vida (LCA) dos produtos da Forbo Flooring Systems está documentada em Declarações Ambientais de Productos (EPD's) individuais ou em esquemas de classificação de edifícios locais, como o BREEAM.

Other Countries

Forbo Flooring B.V.
P.O. Box 13
1560 AA Krommenie
The Netherlands
T: +31 75 647 74 77
question@forbo.com
www.forbo-flooring.com



Find us on



creating better environments

Forbo
FLOORING SYSTEMS