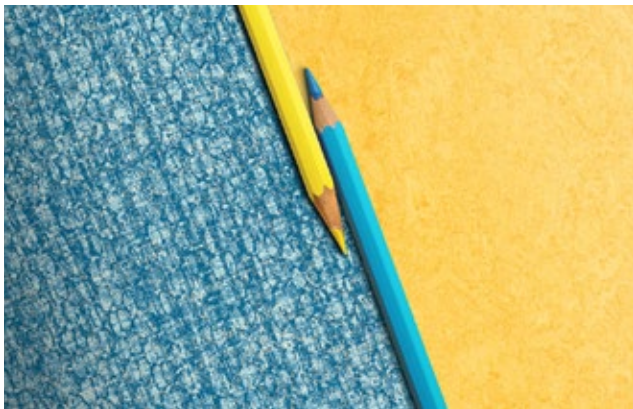


# ELEMENTARY EDUCATION FLOORING SOLUTIONS



creating better environments



FLOORING SYSTEMS

FROM **A** **B** **C**...



...TO **X** **Y** **Z**

**HYGIENIC**

1

**MCT**

MCT is a naturally healthy, PVC and phthalate free floor. MCT is watertight and hygienic, mitigating mold risk while combating MRSA and other strains of bacteria, unlike the open seams of a tile floor that could provide a breeding ground for bacteria and fungi to grow.

**CLEANABLE**

2

**MCT**

MCT's renewable Topshield pro occupancy-ready factory finish requires no initial maintenance and provides a low cost of ownership. Unlike VCT, MCT does not require costly stripping and recoating over the course of its life.

**DURABLE**

3

**MCT**

Thanks to its natural ingredients, MCT gets more durable and resilient over time and features a 30-year System Service Life and a 30-year warranty. MCT's pattern extends throughout the thickness of the product, and its repairable 60 mils wear layer is more than twice the thickness of premium LVT's clear, unrepairable wear layer.

**FLOTEX**

Flotex combines the cleanability and durability of a resilient floor with the slip resistance and acoustic benefits associated with textiles. Waterproof and washable, Flotex is strong and hygienic. Flotex is the only textile floor given The British Asthma and Allergy Foundation Seal of Approval for its contributions to indoor air quality.

**FLOTEX**

Dense upright fibers allow dust and allergens to be easily removed, unlike twisted yarns and loops that trap and conceal dirt and soil. Flotex is maintained by routine vacuuming and without the use of harsh chemicals.

**FLOTEX**

Flotex has 46,000 straight upright 6.6 nylon fibers per square inch. This dense pile resists against crushing, matting and scratching as well as color fading and wear. This unique construction means Flotex will never fray and unravel. The closed cell cushion backing makes Flotex impervious to topical water.

# EXPERTISE IN EDUCATION

THE LEARNING ENVIRONMENT is an important and powerful teaching tool. Much of the early childhood teacher's work is done before the children even arrive. If the environment is set up with the knowledge of how children learn and develop, it can positively support teaching and learning.

Forbo Flooring Systems has been manufacturing and supplying floor coverings for education for more than a century. Our extensive range of floor coverings are used across a wide portfolio of educational establishments around the globe.

**From nursery school through college, educational environments demand attractive, low maintenance, hard wearing, safe and sustainable flooring solutions. Durability and hygiene are especially vital in areas used by children and young adults.**

From entrance to exit, our integrated flooring portfolio for new builds or refurbishments can help you select the ideal flooring solutions for your project. Come explore flooring that supports the learning environment.

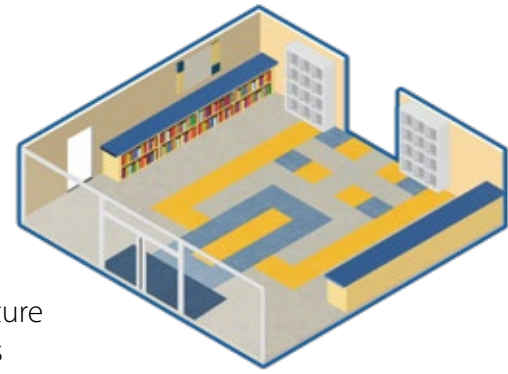


Hi! I'm **Freddie** and I'll give you some **fun facts** about **Flotex!**

I'm **Marlow** and I'm here to give you a-**MAZING** info about **Marmoleum!**



# lobby



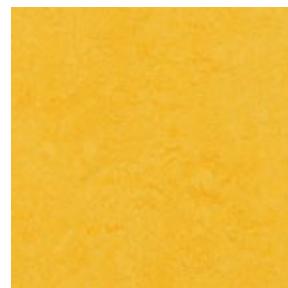
**Challenge:** The difficulty in balancing aesthetics, while providing safety that help reduce operational considerations, entrance floors can prolong the life of your floor as well as greatly reduce cleaning costs and the risk for slipping.

**Solution:** A well designed entrance flooring system will prevent dirt and moisture from being tracked in and thereby prolongs the life of interior flooring, reduces cleaning & maintenance costs and the potential for slip injuries. Textile Coral and rigid Nuway Entrance Systems can offer an entrance solution for every situation.

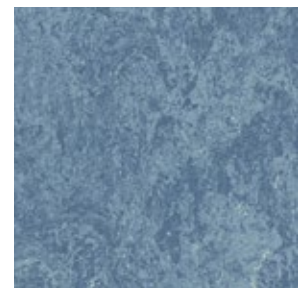


\*4179 | smokey blue  
 \*2206 | oyster shell  
 \*2214 | blue berry  
 \*2212 | fresh pineapple

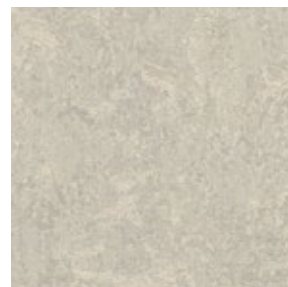
\*Besides the floor, Forbo also makes surface materials, bulletin board cork, and furniture linoleum.



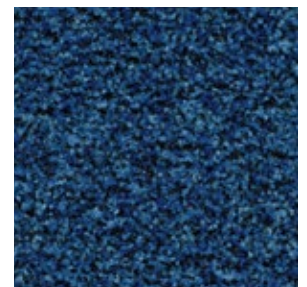
mct-3251 | lemon zest



mct-3055 | fresco blue

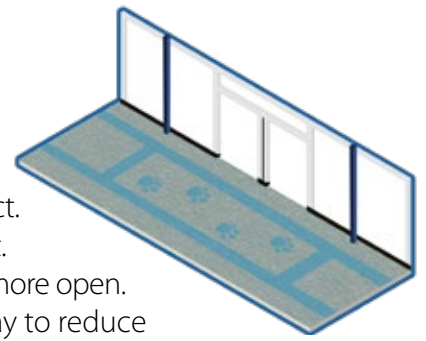


mct-3136 | concrete



5722 | cornflower blue

# corridors

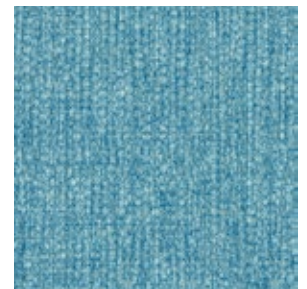


**Challenge:** Narrow corridors with poor flow patterns can unintentionally create conflict. Maximizing the amount of space to circulate, in turn reducing the likelihood of conflict. Student circulation areas should also allow natural light to make them feel larger and more open.

**Solution:** School spaces can be designed, and objects can be placed, in such a way to reduce the potential for path-crossing. By using waterjet cut MCT or Flotex to help define areas of movement from areas of collection can help create a safer environment. MCT can also help carry in daylight to create a more expansive visual.



065263 | faded denim



065265 | blue suede

## did you know:



Thanks to the **46,000** upright nylon 6.6 fibers per in<sup>2</sup> **Flotex** resists crushing and matting. Your high traffic area will be just fine with this **hybrid textile** flooring!

**Marmoleum** becomes more **resilient** as time goes on and is **repairable** due to the 80mil (60mil MCT/MCS) homogeneous wear layer. It's **sustainable** and **durable!**



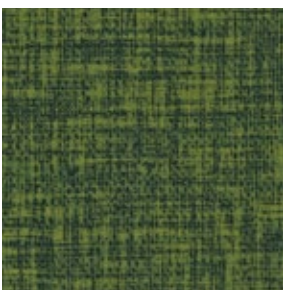
2206 | oyster shell

# classroom



**Challenge:** Poor classroom acoustics are more than merely annoying. If young children are unable to hear their teacher, they usually are unable to “fill in the blanks” as adults with life experience can do, and this can disrupt learning.

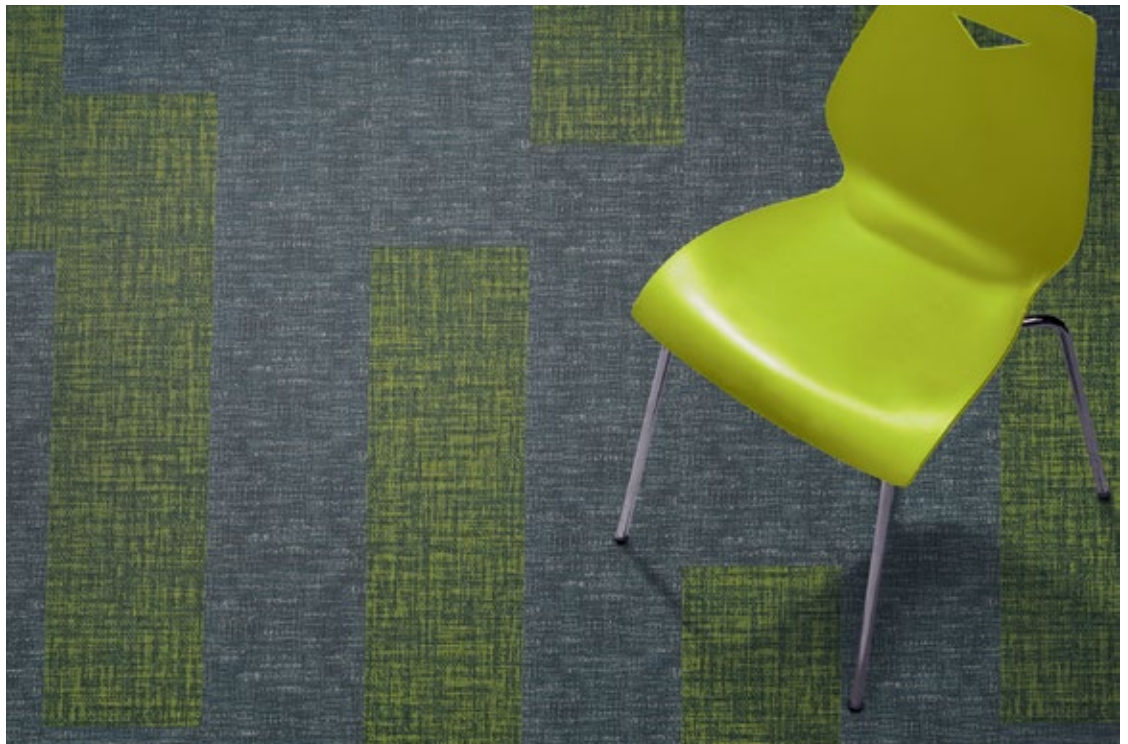
**Solution:** Flotex and MCT can help to improve communication, block unwanted sounds, and lower overhead noise.



065369 | shamrock



065057 | cobalt

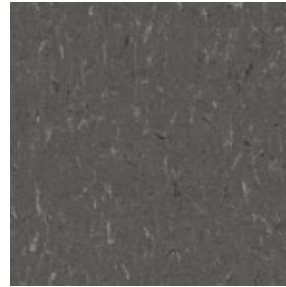


# classroom

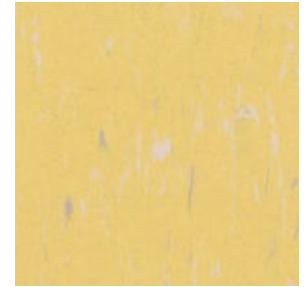


**Challenge:** Day lighting. Evidence based design proves that achievement is improved with increased access to light and views. Light (especially natural light) greatly affects how a room or space is experienced and varies with time of day/time of year. Daylighting should be utilized where practical as a means of activating a space and reducing reliance on artificial light sources.

**Solution:** MCT can help boost the reflectance values of flooring and will help enable more light – from either artificial or natural sources – to bounce off the floor, without glare, and allow the available light to illuminate the space more efficiently.



mct-3607 | grey dusk



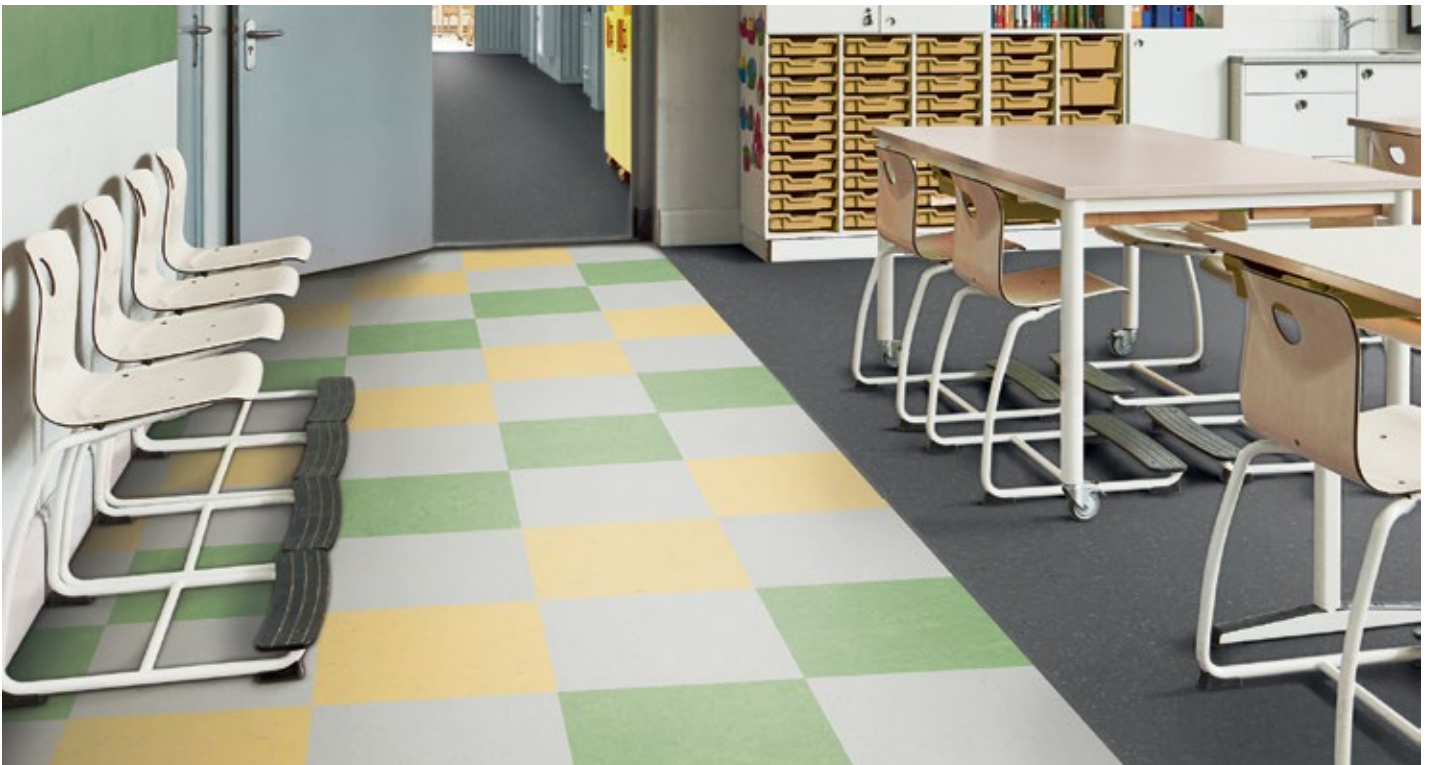
mct-3653 | sunflower



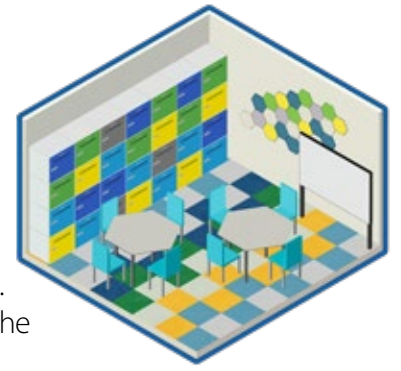
mct-3629 | frosty grey



mct-3260 | leaf



# stem lab



**Challenge:** Effective STEM classroom fosters a positive culture that allows students to problem-solve, collaborate, create, test ideas, and build with their hands. The goal of stem classroom design is to inspire students to think, innovate, prototype, and research in teams. inspired STEM instruction where you need to throw back furniture and clear the center of the room for a demonstration, a project, or a team-building activity.

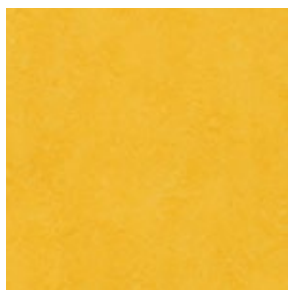
**Solution:** Marmoleum MCT and Furniture protection create a STEM classroom where you can bring furniture together for teamwork activities or spread furniture out to allow room for big builds while students work.



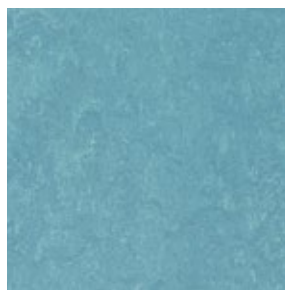
**Furniture Protectors** reduce noise from chair and furniture movement – **no more** distracting squeaks interrupting class!



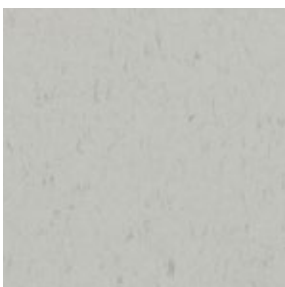
mct-3274 | alpine



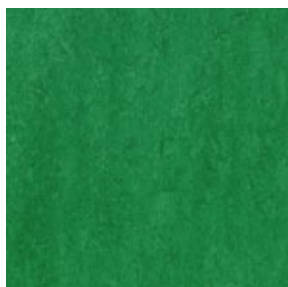
mct-3251 | lemon zest



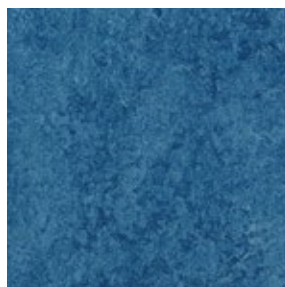
mct-3238 | laguna



mct-3629 | frosty grey



mct-3282 | moss



mct-3030 | blue

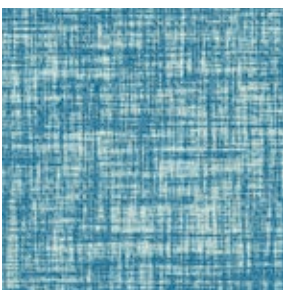




# early child development

**Challenge:** Creating safe, responsive, and nurturing environments are an important part of supporting the learning and development of infants, toddlers, and preschoolers.

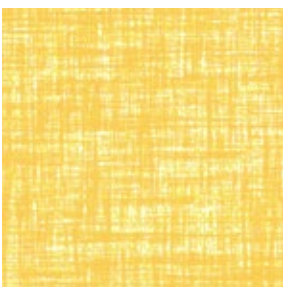
**Solution:** MCT and Flotex are available in a broad palette of colors and structures, ranging from soft and subtle to vibrant and bold, that can be combined and coordinated to help set the mood and define spaces intended for learning, play and rest.



065365 | blue suede



mct-621 | dove grey



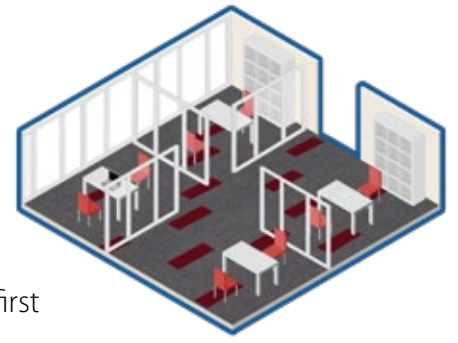
065370 | lemon



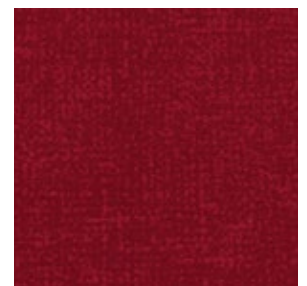
# administrative offices

**Challenge:** The front office is the first point of contact for the public as they do business with the school. The reception area plays an important role in receiving pupils at start of day and handing over at the end of day.

**Solution:** Flotex offers the durability for high traffic while maintaining a positive first impression.

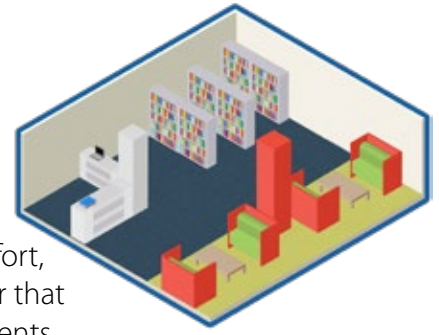


746706 | FCT grey



p946026 | red

# library



**Challenge:** A library that fosters learning and exploration must be a healthy, safe and quiet space to encourage study.

**Solution:** The nylon fibers in Flotex not only perform in sound absorption and comfort, they also capture allergens and fine dust from the air. MCT is a naturally healthy floor that mitigates mold risk and is naturally free from phthalates, pesticides and chemical agents.



065264 | blueberry



mct-3655 | orchid green



## did you know:



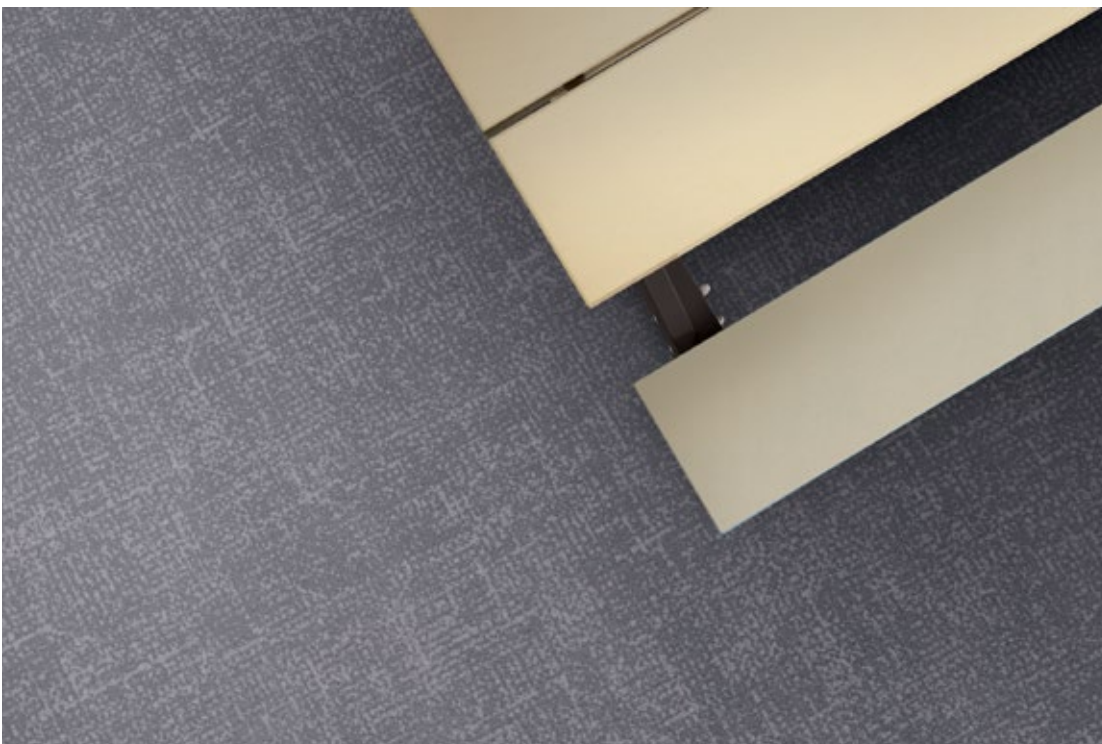
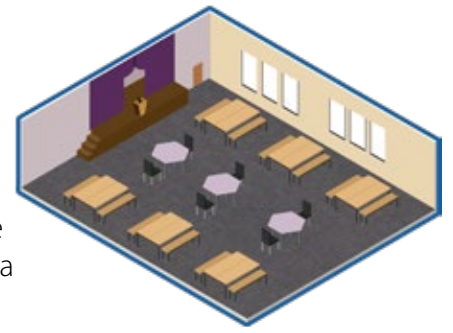
The wide range of colors in our **MCT** and **Flotex** collections are so easy to mix and match!  
With our seamless transition solutions you can have a safe and beautiful space!



# cafeteria/multipurpose room

**Challenge:** The multipurpose space should be able to handle a wide range of functions. A good multipurpose space should be able to satisfy the needs of these many functions—whether they are physical education, dining services, multimedia presentations, or stage and musical productions,

**Solution:** Forbo Flotex provides a durable hygienic surface meeting the needs of these Multipurpose spaces and can minimize maintenance while providing a quiet warm atmosphere.

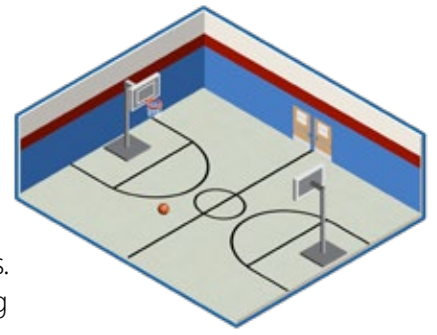


p946005 | nimbus

# gymnasium

---

**Challenge:** Gymnasiums pose many difficult challenges for flooring systems due to its wide range of uses. Recess and gym class are a great opportunity for kids to get exercise while learning important skills, such as teamwork, healthy competition, new physical skills.  
**Solution:** Forbo MCT floor systems can provide an excellent surface for developing physical skills for defined and flexible activities.



mct-3274 | alpine



## design and construction

---

**Challenge:** The school facility is much more than a passive container of the educational process: it is, rather, an integral component of the conditions of learning. The layout and design of a facility contributes to the place experience of students, educators, and community members. Hygienics, Cost of ownership, Health, Safety

**Solution:** MCT and Flotex provide easy to clean hygienic surfaces. Flotex and MCT help improve overall acoustics enhancing the learning environment. Both products offer high moisture and rH adhesive systems saving time and money during new construction. MCT also offers an immediate on adhesive system for the must get done projects.

## facilities

---

**Challenge:** From Kindergarten to Grade 12, a typical student will spend thirteen years in the school buildings. Throughout the extent of an entire career, teachers, administrators, and support staff can spend more than thirty years in the school environment. Ensuring materials are selected for durability, maintainability, longevity, and health.

**Solution:** MCT and Flotex are designed for ease of maintenance and provide class leading System Service Life. Flotex and MCT won't attract or trap dust and is ideal for people suffering from asthma and helps improve cleaning. Let Forbo work with your maintenance staff to put you on the path to efficient, cost saving floor care.



# Forbo EZvations



We have listened to your frustrations and developed EZvation Solutions, a system that will turn your next floor from a liability into an asset. Forbo's EZvation Solutions include our Forbo 100 adhesive system, Forbo Furniture Protectors and Marmoweld ETU products which focus on reducing costs through efficient use of materials and improved labor efficiency.

## Forbo 100 Adhesive Systems

Immediate occupancy adhesive system for Marmoleum sheet and tile that eliminates moisture testing and long set up times. Speeding up installation reduces time and lost revenue for project turnover.

- Fastest, strongest, long-lasting, immediate-on flooring solution
- No moisture testing, eliminating costs and conflict
- Simplified (EZ) installation



## Flotex Spot Eraser

- Flotex Spot Eraser comes with handle, water bottle, spray nozzle, aggressive brush, and absorbent pad.
- Most spots are water base, no chemistry to start, always lead with water to clean Flotex.
- Pad can be washed and reused.
- Flotex Spot Eraser is a daily/weekly solution to removing surface spots.
- The Flotex Spot Eraser is not a substitute for your interim deep cleaning with self-contained extractor.



## Forbo Furniture Protectors

- Reduces floor maintenance costs by over 50%
- 90% noise reduction
- Lasts up to 15 times longer than regular sticky felts
- Compact shape that looks like it's part of the furniture
- Easy to install (under 1 minute per chair)
- Reduces wear on your furniture.
- Eliminates time wasted installing cheap synthetic pads that don't stay on



## Marmoweld ETU

Color matching paste weld used to complete the installation of Forbo Marmoleum products as our preferred method of welding. The application of Marmoweld ETU is faster and easier than traditional heat welding while providing a hygienic watertight installation\*.

- Cost savings over traditional heat welding
- EZ to use
- The elimination of likely damage caused by grooving, burning and scalping seams from traditional heat welding
- Improved aesthetics and performance over standard heat welded floors

\*Due to the developments and advancements made over the last decades with the combination of Marmoleum® Topshield pro (Forbo's factory finish for Marmoleum®), improvements in water-based adhesives and with our commitment to education of proper installation, care and maintenance procedures and environmental stewardship, heat welding is no longer necessary for most applications.

# FLOORING SOLUTIONS FROM ENTRANCE TO EXIT



**Naturally beautiful, durable, sustainable and healthy!**  
Forbo Marmoleum floors are associated with sustainability, durability, high quality and innovative design.



**Flotex combines the practicality of a resilient flooring with the slip resistant and acoustic properties usually associated with textiles.**  
Flotex is strong and hygienic, and, being completely waterproof, Flotex is also the only truly washable textile floor covering.

**Forbo Flooring Systems**  
visit us online: [www.forboflooringNA.com](http://www.forboflooringNA.com) | email: [info.na@forbo.com](mailto:info.na@forbo.com)  
North American Headquarters: 8 Maplewood Drive, Humboldt Industrial Park, Hazle Township, PA 18202  
ph: 1-800-842-7839 / 570-459-0771 | fax: 570-450-0258  
Canadian Office: 3983 Nashua Drive, Unit 1, Mississauga, ON L4V 1P  
ph: 1-800-268-8108 / 416-745-4200 | fax: 416-745-4211

**creating better environments**



**The first steps in protecting your building.** By stopping up to 95% of walked in dirt and moisture, our Coral entrance floors can prolong the life of your floor as well as greatly reduce cleaning costs and the risk for slipping.



**Bulletin Board, for your thoughts...**  
Bulletin Board is the ideal material for pin boards, notice boards and all other surfaces where ideas and information are exchanged.



**forbo**  
FLOORING SYSTEMS