

siegling linpack

folder and carrier belts



LINPACK COATED BELTS WITH CUSTOMIZED FINISHES



LINPACK

COATED BELTS WITH CUSTOMIZED FINISHES

Fast speeds during separation, acceleration and conveying require high-performance solutions. Which is why Forbo Movement Systems' Linpack offers perfect customizing options. By combining tried-and-tested core materials and coatings and adding mechanical finishing, we can provide belts tailored to your application.

Cardboard boxes? Corrugated cardboard? Tinfoil? Plastic panels?

No problem for Linpack. Linpack are powerful belts that can offer exceptional friction coefficients, excellent resistance, or soft surfaces.

Some of their many benefits are as follows:

- excellent grip and very good abrasion resistance (even in wet conditions)
- function-driven elasticity
- customized padding (to convey sensitive products too)
- superb tracking and long service lives

Three ways to customize your Linpack product

1 > The core material

The core material has ideal characteristics for your application.

It consists of the following:

- either multilayer tension member fabric with intermediate layers
- or of coated polyamide sheeting
- or an elastic material that requires no take-up unit



2 > The top face coating

The top face coating provides the grip and the right level of hardness. The Linpack range comes in multiple coating materials geared to the products conveyed and application. Multilayer coatings made of different materials are even possible.



3 > Optional finishing

If required, we can add further features to belts and adapt them to requirements. For instance, we can add perforations or patterns, or make them to an exact thickness.



Product design

Underside

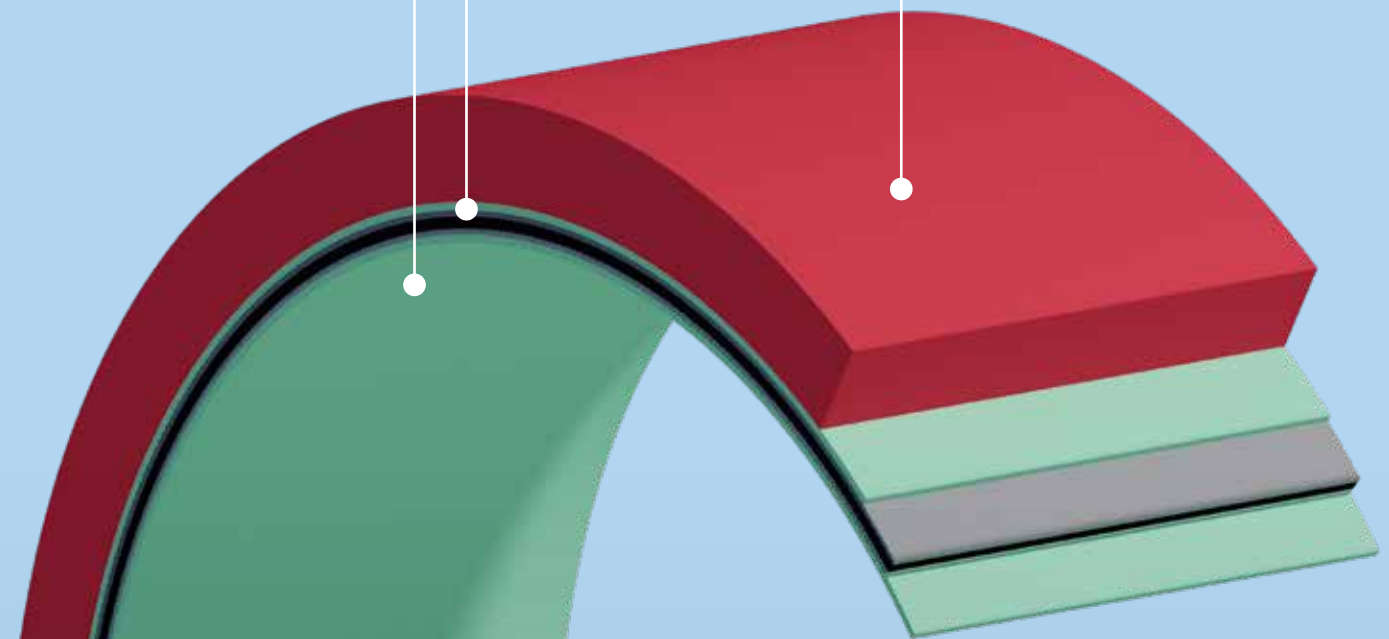
Polyamide fabric, urethane-impregnated polyester fabric, rubber or urethane

Core material (antistatic)

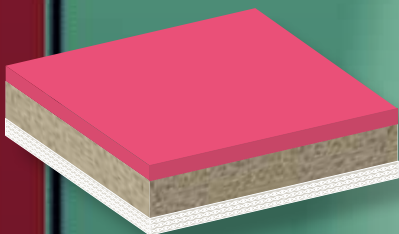
Multilayer design with polyester fabric as the tension member, alternatively urethane or highly oriented polyamide sheet

Coatings

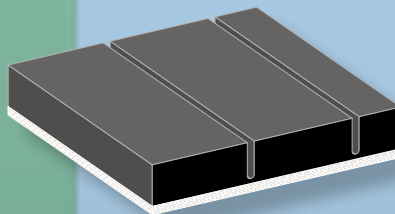
Multiple types of rubber, PU foam, leather, or neoprene



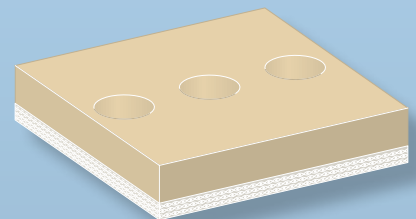
Examples of Linpack belts with extra finishing



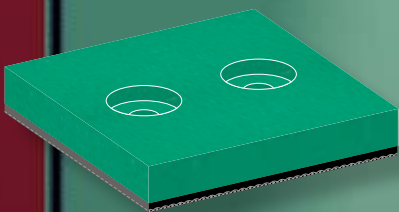
Extra Linatex coating



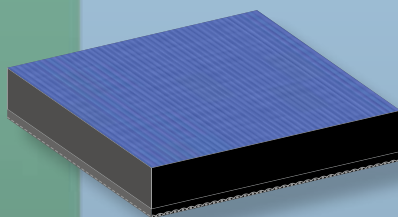
Cross-milling



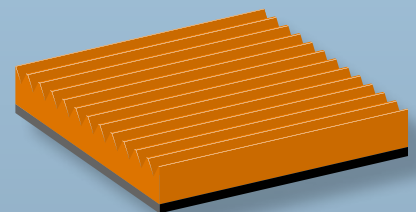
Perforations



Cylindrical countersunk holes



Extra jersey coating



Milled LG pattern



More options with extra customization

We use state-of-the-art production technology to tailor Linpack belts to requirements and provide exceptional repeat accuracy.

The following options are possible:

- applying longitudinal profiles to the underside
- making lengthways and crossways grooves in the coating
- creating widths to precise dimensions
- applying perforations

Further customization options on request.



Impressive when in action

Multiple material combinations and customizable options mean Linpack excels in handling the products on the belt and the task at hand. Which is why Linpack belts are the go-to choice for a wide range of conveying and processing tasks. For instance:

- as feeder belts
 - in letter sorting machines
 - in folder gluers
 - for corrugated cardboard (In-liner/Flexo folder gluers)
 - in window patching machines
 - in labeling machines
- as folder and vacuum belts
 - in the corrugated cardboard industry (In-liner/Flexo folder gluers)
- as take-off belts
 - for paper bags
 - for making beverage packaging
- as conveyor belts
 - with very high friction coefficients
 - for sensitive or abrasive products
- as acceleration belts in tinsplate processing
- as driven side guide belts



PRODUCT RANGE

	Article number	Coating material	Core material thickness [mm]	Min. coating thickness, unground [mm]	Max. coating thickness, unground [mm]	Coating hardness [Shore A]	Coating density [kg/m ³]*	F _w value approx. [N/mm width]**	Tensile force at 1% elongation (K _{1%} relaxed) [N/mm width]***	Operating temperature permitted [°C]
Linpack RT 6-Linatex black/red	850700	Natural rubber	1.3	2.0	12.0	38.0	-	6	-	-20/70
Linpack R 6-Linatex gray/red	850701	Natural rubber	1.5	2.0	12.0	38.0	-	8	-	-20/70
Linpack R 14/2-Linatex green/red	850702	Natural rubber	2.0	2.0	12.0	38.0	-	14	-	-20/70
Linpack R 14/3-Linatex green/red	850703	Natural rubber	3.0	2.0	12.0	38.0	-	14	-	-20/70
Linpack T 2-Linatex transparent/red	850704	Natural rubber	2.2	2.0	12.0	38.0	-	-	10.5	-10/70
Linpack T 4-Linatex transparent/red	850705	Natural rubber	1.1	2.0	12.0	38.0	-	-	3.5	-30/70
Linpack RT 6-Linard black/white	850710	Natural rubber	1.3	3.0	12.0	38.0	-	6	-	-20/70
Linpack R 6-Linard gray/white	850711	Natural rubber	1.5	3.0	12.0	38.0	-	8	-	-20/70
Linpack R 14/2-Linard green/white	850712	Natural rubber	2.0	3.0	12.0	38.0	-	14	-	-20/70
Linpack R 14/3-Linard green/white	850713	Natural rubber	3.0	3.0	12.0	38.0	-	14	-	-20/70
Linpack T 4-Linard transparent/white	850714	Natural rubber	1.1	3.0	12.0	38.0	-	-	3.5	-30/70
Linpack U 20-Linatex black/red	850733	Natural rubber	1.1	2.0	12.0	38.0	-	0.25	-	-20/60
Linpack U 60-Linatex black/red	850734	Natural rubber	1.5	2.0	12.0	38.0	-	1	-	-20/60
Linpack T 2-Linard transparent/white	850737	Natural rubber	2.2	3.0	12.0	38.0	-	-	10.5	-10/70
Linpack T 2-Correx transparent/beige	850742	Natural rubber	2.2	6.0	10.0	40.0	-	-	10.5	-10/70
Linpack RT 6-Porol black/black	850715	Foam rubber	1.3	5.0	20.0	-	165	6	-	-20/80
Linpack R 6-Porol gray/black	850716	Foam rubber	1.5	5.0	20.0	-	165	8	-	-20/80
Linpack R 14/2-Porol green/black	850717	Foam rubber	2.0	5.0	20.0	-	165	14	-	-20/80
Linpack T 4-Porol transparent/black	850718	Foam rubber	1.1	5.0	20.0	-	165	-	3.5	-30/85
Linpack T 4-Sponge transparent/orange	850719	Foam rubber	1.1	10.0	20.0	-	160/250	-	3.5	-30/70
Linpack T 2-Sponge transparent/orange	850721	Foam rubber	2.2	10.0	20.0	-	160/250	-	10.5	-10/70
Linpack T 2-Sponge transparent/gray	850722	Foam rubber	2.2	6.0	6.0	25.0	-	-	10.5	-10/70
Linpack RT 6-Sponge black/orange	850723	Foam rubber	2.2	10.0	20.0	-	160/250	6	-	-20/70
Linpack T 2-Porol transparent/black	850738	Foam rubber	2.2	5.0	20.0	-	165	-	10.5	-10/70
Linpack R 14/2-Linatrile green/orange	850706	Nitrile rubber (NBR)	2.0	3.0	15.0	55.0	-	14	-	-20/80
Linpack R 30-Linatrile gray/orange	850707	Nitrile rubber (NBR)	3.2	3.0	15.0	55.0	-	30	-	-20/80
Linpack T 2-Linatrile transparent/orange	850708	Nitrile rubber (NBR)	2.2	3.0	15.0	55.0	-	-	10.5	-10/70
Linpack T 4-Linatrile transparent/gray	850709	Nitrile rubber (NBR)	1.1	3.0	15.0	55.0	-	-	3.5	-20/100
Linpack U 60-Linatrile black/orange	850735	Nitrile rubber (NBR)	1.5	3.0	15.0	55.0	-	1	-	-20/60
Linpack RT 6-Linatrile black/orange	850736	Nitrile rubber (NBR)	1.3	3.0	15.0	55.0	-	6	-	-20/80
Linpack RT 6-Sylomer black/blue	850725	PU foam	1.3	12.0	25.0	-	220	6	-	-20/70
Linpack RT 6-Sylomer black/green	850726	PU foam	1.3	6.0	25.0	-	300	6	-	-20/70
Linpack T 4-Sylomer transparent/green	850727	PU foam	1.1	6.0	25.0	-	300	-	3.5	-30/70
Linpack RT 6-Vulcocell black/beige	850728	PU foam	1.3	8.0	8.0	-	400	6	-	-20/80
Linpack R 14/2-Vulcocell green/beige	850729	PU foam	2.0	8.0	8.0	-	400	14	-	-20/80
Linpack R 14/3-Vulcocell green/beige	850730	PU foam	3.0	8.0	8.0	-	400	14	-	-20/80
Linpack T 4-Sylomer transparent/blue	850740	PU foam	1.1	12.0	25.0	-	220	-	3.5	-30/70
Linpack T 4-Sylomer transparent/brown	850741	PU foam	1.1	6.0	12.0	-	400	-	3.5	-30/70
Linpack T 2-Leather transparent/gray	850731	Chrome leather	2.2	1.8	1.8	-	-	-	10.5	-10/70
Linpack T 4-Leather transparent/gray	850732	Chrome leather	1.1	1.8	1.8	-	-	-	3.5	-10/100
Linpack RT 6-Celrubber/jersey black/blue	850720	Neoprene/nylon	1.3	5.0	15.0	-	170	6	-	-20/80
Linpack T 4-Celrubber/jersey transparent/blue	850739	Neoprene/nylon	1.1	5.0	15.0	-	170	-	3.5	-30/80
Linpack RT 6-PU 55 black/yellow	850724	PU (thermoplastic)	1.3	2.0	4.0	-	55	6	-	-10/60

More coating materials and material combinations on request

* The smallest pulley (roller) diameters depend on thickness and can be specified on request.

** Established based on ISO 21181:2005

*** Shaft load at 1% elongation and 180° arc of contact measured in N/mm belt width

**** Customized options depend on the thickness

1 An open cell structure is created during finishing

Siegling – total belting solutions

Committed staff, quality oriented organization and production processes ensure the constantly high standards of our products and services.

Forbo Movement Systems complies with total quality management principles. Our quality management system has ISO 9001 certification at all production and fabrication sites. What's more, many sites have ISO 14001 environmental management certification.



Ref. no. 244-2
03/25 - UDH - Reproduction of text or parts thereof only with our approval. Subject to change.



Our service – anytime, anywhere

Forbo Movement Systems employs around 2,500 people in its group of companies. Our products are manufactured in ten production facilities across the world.

You can find companies and agencies with warehouses and workshops in over 80 countries.

Service points are located in more than 300 places worldwide.

Forbo Siegling GmbH

Lilienthalstrasse 6/8, D-30179 Hannover

Phone +49 511 6704 0

www.forbo-siegling.com, siegling@forbo.com



MOVEMENT SYSTEMS