

# siegling linpack

folder and carrier belts



## LINPACK

COATED BELTS WITH  
CUSTOMIZED FINISHES



# LINPACK

## COATED BELTS WITH CUSTOMIZED FINISHES

Fast speeds during separation, acceleration and conveying require high-performance solutions. Which is why Forbo Movement Systems' Linpack offers perfect customizing options. By combining tried-and-tested core materials and coatings and adding mechanical finishing, we can provide belts tailored to your application.

### **Cardboard boxes? Corrugated cardboard? Tinplate? Plastic panels?**

No problem for Linpack. Linpack are powerful belts that can offer exceptional friction coefficients, excellent resistance, or soft surfaces.

Some of their many benefits are as follows:

- excellent grip and very good abrasion resistance (even in wet conditions)
- function-driven elasticity
- customized padding (to convey sensitive products too)
- superb tracking and long service lives

### Three ways to customize your Linpack product

#### **1 > The core material**

The core material has ideal characteristics for your application.

It consists of the following:

- either multilayer tension member fabric with intermediate layers
- or of coated polyamide sheeting
- or an elastic material that requires no take-up unit



#### **2 > The top face coating**

The top face coating provides the grip and the right level of hardness. The Linpack range comes in multiple coating materials geared to the products conveyed and application. Multilayer coatings made of different materials are even possible.



#### **3 > Optional finishing**

If required, we can add further features to belts and adapt them to requirements. For instance, we can add perforations or patterns, or make them to an exact thickness.



# Product design

## Underside

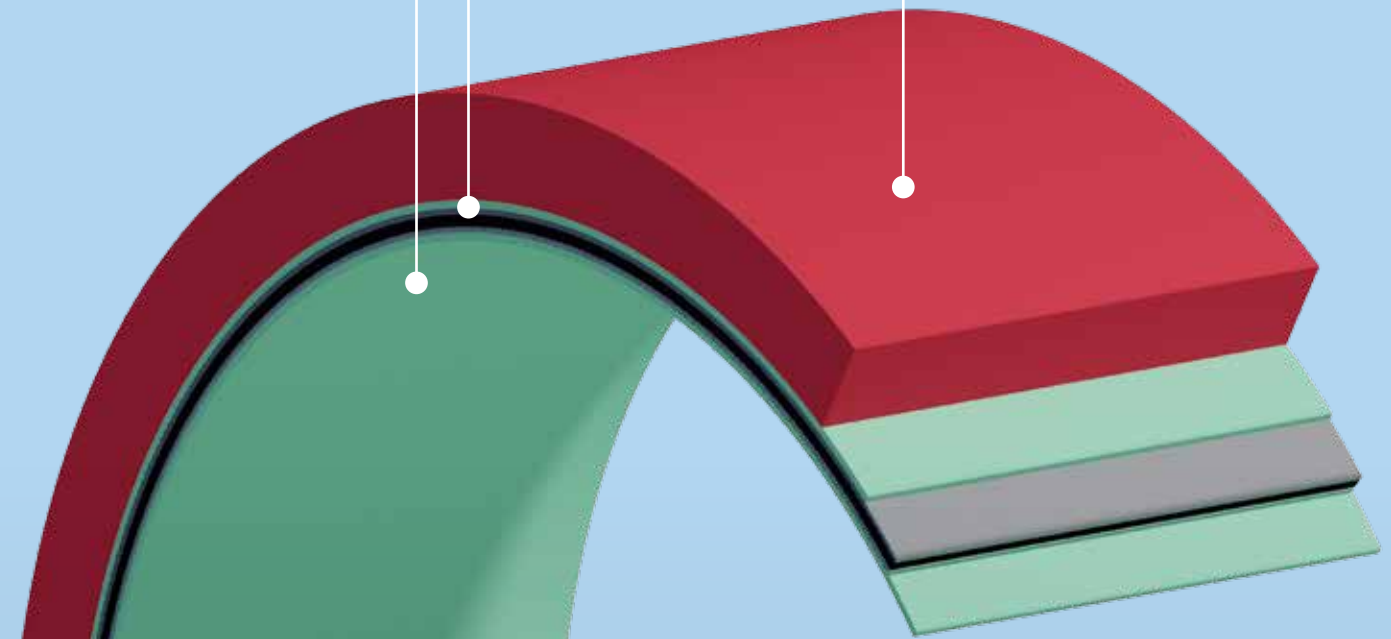
Polyamide fabric, urethane-impregnated polyester fabric, rubber or urethane

## Core material (antistatic)

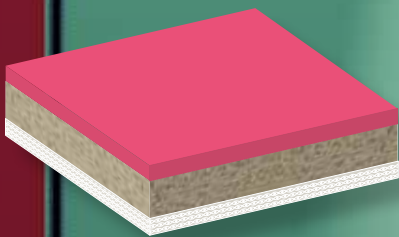
Multilayer design with polyester fabric as the tension member, alternatively urethane or highly oriented polyamide sheet

## Coatings

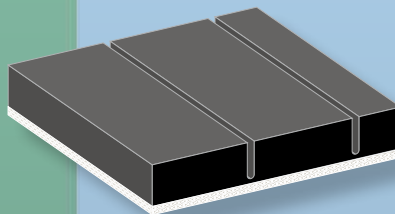
Multiple types of rubber, PU foam, leather, or neoprene



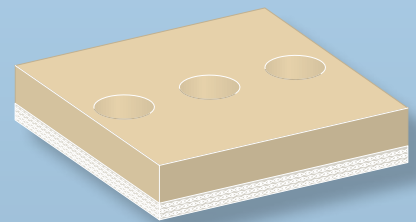
## Examples of Linpack belts with extra finishing



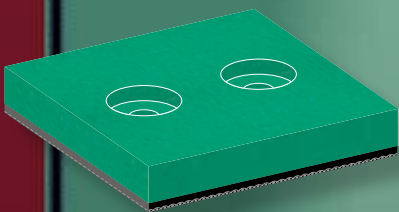
Extra Linatex coating



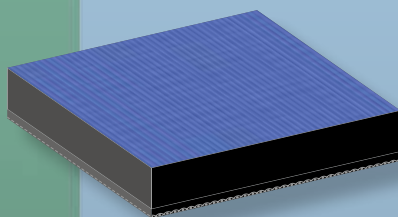
Cross-milling



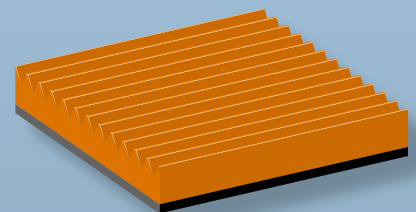
Perforations



Cylindrical countersunk holes



Extra jersey coating



Milled LG pattern



## More options with extra customization

We use state-of-the-art production technology to tailor Linpack belts to requirements and provide exceptional repeat accuracy.

The following options are possible:

- applying longitudinal profiles to the underside
- making lengthways and crossways grooves in the coating
- creating widths to precise dimensions
- applying perforations

Further customization options on request.



## Impressive when in action

Multiple material combinations and customizable options mean Linpack excels in handling the products on the belt and the task at hand. Which is why Linpack belts are the go-to choice for a wide range of conveying and processing tasks. For instance:

- as feeder belts
  - in letter sorting machines
  - in folder gluers
  - for corrugated cardboard (In-liner/Flexo folder gluers)
  - in window patching machines
  - in labeling machines
- as folder and vacuum belts
  - in the corrugated cardboard industry (In-liner/Flexo folder gluers)
- as take-off belts
  - for paper bags
  - for making beverage packaging
- as conveyor belts
  - with very high friction coefficients
  - for sensitive or abrasive products
- as acceleration belts in tinsplate processing
- as driven side guide belts



# PRODUCT RANGE

|   | Article number | Coating material     | Core material thickness [mm] | Min. coating thickness, unground [mm] | Max. coating thickness, unground [mm] | Coating hardness [Shore A] | Coating density [kg/m <sup>3</sup> ]* | F <sub>w</sub> value approx. [N/mm width]** | Tensile force at 1% elongation (K <sub>1%</sub> relaxed) [N/mm width]*** | Operating temperature permitted [°C] |
|---|----------------|----------------------|------------------------------|---------------------------------------|---------------------------------------|----------------------------|---------------------------------------|---|--|--------------------------------------|
| Linpack RT 6-Linatex black/red                | 850700         | Natural rubber       | 1.3                          | 2.0                                   | 12.0                                  | 38.0                       | -                                     | 6   | -  | -20/70                               |
| Linpack R 6-Linatex gray/red                  | 850701         | Natural rubber       | 1.5                          | 2.0                                   | 12.0                                  | 38.0                       | -                                     | 8   | -  | -20/70                               |
| Linpack R 14/2-Linatex green/red              | 850702         | Natural rubber       | 2.0                          | 2.0                                   | 12.0                                  | 38.0                       | -                                     | 14  | -  | -20/70                               |
| Linpack R 14/3-Linatex green/red              | 850703         | Natural rubber       | 3.0                          | 2.0                                   | 12.0                                  | 38.0                       | -                                     | 14  | -  | -20/70                               |
| Linpack T 2-Linatex transparent/red           | 850704         | Natural rubber       | 2.2                          | 2.0                                   | 12.0                                  | 38.0                       | -                                     | -   | 10.5   | -10/70                               |
| Linpack T 4-Linatex transparent/red           | 850705         | Natural rubber       | 1.1                          | 2.0                                   | 12.0                                  | 38.0                       | -                                     | -   | 3.5  | -30/70                               |
| Linpack RT 6-Linagard FG black/white          | 850710         | Natural rubber       | 1.3                          | 3.0                                   | 12.0                                  | 38.0                       | -                                     | 6   | -  | -20/70                               |
| Linpack R 6-Linagard FG gray/white            | 850711         | Natural rubber       | 1.5                          | 3.0                                   | 12.0                                  | 38.0                       | -                                     | 8   | -  | -20/70                               |
| Linpack R 14/2-Linagard FG green/white        | 850712         | Natural rubber       | 2.0                          | 3.0                                   | 12.0                                  | 38.0                       | -                                     | 14  | -  | -20/70                               |
| Linpack R 14/3-Linagard FG green/white        | 850713         | Natural rubber       | 3.0                          | 3.0                                   | 12.0                                  | 38.0                       | -                                     | 14  | -  | -20/70                               |
| Linpack T 4-Linagard FG transparent/white     | 850714         | Natural rubber       | 1.1                          | 3.0                                   | 12.0                                  | 38.0                       | -                                     | -   | 3.5  | -30/70                               |
| Linpack U 20-Linatex black/red                | 850733         | Natural rubber       | 1.1                          | 2.0                                   | 12.0                                  | 38.0                       | -                                     | 0.25  | -  | -20/60                               |
| Linpack U 60-Linatex black/red                | 850734         | Natural rubber       | 1.5                          | 2.0                                   | 12.0                                  | 38.0                       | -                                     | 1   | -  | -20/60                               |
| Linpack T 2-Linagard FG transparent/white     | 850737         | Natural rubber       | 2.2                          | 3.0                                   | 12.0                                  | 38.0                       | -                                     | -   | 10.5   | -10/70                               |
| Linpack T 2-Correx transparent/beige          | 850742         | Natural rubber       | 2.2                          | 6.0                                   | 10.0                                  | 40.0                       | -                                     | -   | 10.5   | -10/70                               |
| Linpack RT 6-Porol black/black                | 850715         | Foam rubber          | 1.3                          | 5.0                                   | 20.0                                  | -                          | 165                                   | 6   | -  | -20/80                               |
| Linpack R 6-Porol gray/black                  | 850716         | Foam rubber          | 1.5                          | 5.0                                   | 20.0                                  | -                          | 165                                   | 8   | -  | -20/80                               |
| Linpack R 14/2-Porol green/black              | 850717         | Foam rubber          | 2.0                          | 5.0                                   | 20.0                                  | -                          | 165                                   | 14  | -  | -20/80                               |
| Linpack T 4-Porol transparent/black           | 850718         | Foam rubber          | 1.1                          | 5.0                                   | 20.0                                  | -                          | 165                                   | -   | 3.5  | -30/85                               |
| Linpack T 4-Sponge transparent/orange         | 850719         | Foam rubber          | 1.1                          | 10.0                                  | 20.0                                  | -                          | 160/250                               | -   | 3.5  | -30/70                               |
| Linpack T 2-Sponge transparent/orange         | 850721         | Foam rubber          | 2.2                          | 10.0                                  | 20.0                                  | -                          | 160/250                               | -   | 10.5   | -10/70                               |
| Linpack T 2-Sponge transparent/gray           | 850722         | Foam rubber          | 2.2                          | 6.0                                   | 6.0                                   | 25.0                       | -                                     | -   | 10.5   | -10/70                               |
| Linpack RT 6-Sponge black/orange              | 850723         | Foam rubber          | 2.2                          | 10.0                                  | 20.0                                  | -                          | 160/250                               | 6   | -  | -20/70                               |
| Linpack T 2-Porol transparent/black           | 850738         | Foam rubber          | 2.2                          | 5.0                                   | 20.0                                  | -                          | 165                                   | -   | 10.5   | -10/70                               |
| Linpack R 14/2-Linatrile green/orange         | 850706         | Nitrile rubber (NBR) | 2.0                          | 3.0                                   | 15.0                                  | 55.0                       | -                                     | 14  | -  | -20/80                               |
| Linpack R 30-Linatrile gray/orange            | 850707         | Nitrile rubber (NBR) | 3.2                          | 3.0                                   | 15.0                                  | 55.0                       | -                                     | 30  | -  | -20/80                               |
| Linpack T 2-Linatrile transparent/orange      | 850708         | Nitrile rubber (NBR) | 2.2                          | 3.0                                   | 15.0                                  | 55.0                       | -                                     | -   | 10.5   | -10/70                               |
| Linpack T 4-Linatrile transparent/gray        | 850709         | Nitrile rubber (NBR) | 1.1                          | 3.0                                   | 15.0                                  | 55.0                       | -                                     | -   | 3.5  | -20/100                              |
| Linpack U 60-Linatrile black/orange           | 850735         | Nitrile rubber (NBR) | 1.5                          | 3.0                                   | 15.0                                  | 55.0                       | -                                     | 1   | -  | -20/60                               |
| Linpack RT 6-Linatrile black/orange           | 850736         | Nitrile rubber (NBR) | 1.3                          | 3.0                                   | 15.0                                  | 55.0                       | -                                     | 6   | -  | -20/80                               |
| Linpack RT 6-Sylomer black/blue               | 850725         | PU foam              | 1.3                          | 12.0                                  | 25.0                                  | -                          | 220                                   | 6   | -  | -20/70                               |
| Linpack RT 6-Sylomer black/green              | 850726         | PU foam              | 1.3                          | 6.0                                   | 25.0                                  | -                          | 300                                   | 6   | -  | -20/70                               |
| Linpack T 4-Sylomer transparent/green         | 850727         | PU foam              | 1.1                          | 6.0                                   | 25.0                                  | -                          | 300                                   | -   | 3.5  | -30/70                               |
| Linpack RT 6-Vulcocell black/beige            | 850728         | PU foam              | 1.3                          | 8.0                                   | 8.0                                   | -                          | 400                                   | 6   | -  | -20/80                               |
| Linpack R 14/2-Vulcocell green/beige          | 850729         | PU foam              | 2.0                          | 8.0                                   | 8.0                                   | -                          | 400                                   | 14  | -  | -20/80                               |
| Linpack R 14/3-Vulcocell green/beige          | 850730         | PU foam              | 3.0                          | 8.0                                   | 8.0                                   | -                          | 400                                   | 14  | -  | -20/80                               |
| Linpack T 4-Sylomer transparent/blue          | 850740         | PU foam              | 1.1                          | 12.0                                  | 25.0                                  | -                          | 220                                   | -   | 3.5  | -30/70                               |
| Linpack T 4-Sylomer transparent/brown         | 850741         | PU foam              | 1.1                          | 6.0                                   | 12.0                                  | -                          | 400                                   | -   | 3.5  | -30/70                               |
| Linpack T 2-Leather transparent/gray          | 850731         | Chrome leather       | 2.2                          | 1.8                                   | 1.8                                   | -                          | -                                     | -   | 10.5   | -10/70                               |
| Linpack T 4-Leather transparent/gray          | 850732         | Chrome leather       | 1.1                          | 1.8                                   | 1.8                                   | -                          | -                                     | -   | 3.5  | -10/100                              |
| Linpack RT 6-Celrubber/jersey black/blue      | 850720         | Neoprene/nylon       | 1.3                          | 5.0                                   | 15.0                                  | -                          | 170                                   | 6   | -  | -20/80                               |
| Linpack T 4-Celrubber/jersey transparent/blue | 850739         | Neoprene/nylon       | 1.1                          | 5.0                                   | 15.0                                  | -                          | 170                                   | -   | 3.5  | -30/80                               |
| Linpack RT 6-PU 55 black/yellow               | 850724         | PU (thermoplastic)   | 1.3                          | 2.0                                   | 4.0                                   | -                          | 55                                    | 6   | -  | -10/60                               |

More coating materials and material combinations on request

\* The smallest pulley (roller) diameters depend on thickness and can be specified on request.

\*\* Established based on ISO 21181:2005

\*\*\* Shaft load at 1% elongation and 180° arc of contact measured in N/mm belt width

\*\*\*\* Customized options depend on the thickness

1 An open cell structure is created during finishing



## Siegling – total belting solutions

Committed staff, quality oriented organization and production processes ensure the constantly high standards of our products and services.

Forbo Movement Systems complies with total quality management principles. Our quality management system has ISO 9001 certification at all production and fabrication sites. What's more, many sites have ISO 14001 environmental management certification.



Ref. no. 244-2  
08/24-UDH - Reproduction of text or parts thereof only with our approval. Subject to change.



### Our service – anytime, anywhere

Forbo Movement Systems employs around 2,500 people in its group of companies. Our products are manufactured in ten production facilities across the world.

You can find companies and agencies with warehouses and workshops in over 80 countries.

Service points are located in more than 300 places worldwide.

#### Forbo Siegling GmbH

Lilienthalstrasse 6/8, D-30179 Hannover

Phone +49 511 6704 0

[www.forbo-siegling.com](http://www.forbo-siegling.com), [siegling@forbo.com](mailto:siegling@forbo.com)



MOVEMENT SYSTEMS