

Willem Drees School - Pays-Bas



Marmoleum Concrete is applied in the classrooms and Allura is applied in corridors.

Interior Architect	De Jel & Van der Leeden Architecten
Installation par	Lykele Projectinrichters BV
Photographe	Erik Poffers
Lieu	Den Haag, NL

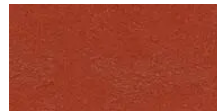
Revêtements de sol utilisés



Allura Wood
waxed oak



Marmoleum
Walton Cirrus
yellow moss



Marmoleum
Walton Cirrus
Berlin red



Marmoleum
Walton Cirrus
petrol



Marmoleum
Walton Cirrus
bottle green



Marmoleum
Concrete
liquid clay



Marmoleum
Walton Cirrus
original brown

