

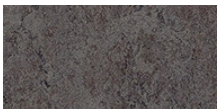
**Wakato Hospital**



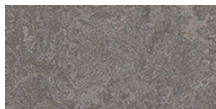
Waikato Hospital Acute Services Building Atrium by CJM (a joint venture between Chow:Hill, Jasmx Limited and McConnell Smith & Johnson) Bold swathes of vivid colour and dramatic shapes create a visually exciting landscape. This is a dynamic, lively and uplifting space that is so much more welcoming and exciting than traditional institutional surroundings. Marko den Breems of Jasmx Limited, joint CJM project director who lead the design for the atrium, which is part of the bigger Waikato Hospital campus redevelopment, reported - "Usually atriums are large spaces that people feel quite threatened to enter. Our design expresses the colours and undulations of farmland and rolling hills central to the Waikato area's identity. A palette was created from greens, orange/yellow and slaty warm dark greys."

Flooring contractor Hills Floorings	
Photographer	Indiefilm Productions
Location	Hamilton, New Zealand
Reference	Interior Architects Marko Den Breems
Architect	CJM - Joint Venture, Chow Hill, Jasmx and MSJ Architects
Commissioned by	Waikato District Health Board
General contractor	Fletcher Construction

**Used Products**



Marmoleum Fresco lava



Marmoleum Real slate grey



Marmoleum Real chartreuse



XX Marmoleum Real marigold

