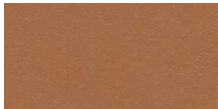


## The School of Oriental and African Studies | University of London



The School of Oriental and African Studies (SOAS) from the University of London was looking to refurbish their social and office spaces with updated designs reflective of the organisation's diverse student body. Interior architects office Story Design was consulted to draw up the interior plans, using Forbo's Marmoleum and Tessera floor coverings to help elevate the space. As part of a refurbishment to the group's existing spaces, Simon Kenton, Creative Director at Story Design, said: "I was approached by SOAS to help them revamp one of their buildings, and granted relatively free rein to be creative with my colour and design choices. "I was very keen on representing all the varied student cultures within the school, so I chose a colour palette that incorporated bright and colourful shades. We also had the idea of creating an abstract globe design within the reception area, which reinforced the idea of its students being from across the world and helped to add a real focal point to the area. This was accompanied by a wall graphic detailing the history of SOAS." To create this globe design, Forbo's precise Aquajet cutting service was utilised by Simon, with a bespoke flooring design created. Simon explained: "As we wanted the globe design to be on the floor itself, I chose Forbo's Marmoleum Cocoa and had it created using the manufacturer's water cutting technology. This ended up being very effective and the design and install phases were really easy, ensuring a smooth transition overall." Marmoleum Cocoa was specified for the majority of the flooring space. Simon commented: "I really liked the look of Forbo's Marmoleum Cocoa, with the cocoa shells in the flooring adding a unique touch to the product, as well as it being a sustainable and durable solution. The Meringue colourway was chosen for the main lobby and corridors - a very minimal and contemporary design, from which I could then build upon with other fixtures in the rooms. The Milk Chocolate colourway was installed across the reception area and into the adjoining corridor. "From here, I added some other accents using Marmoleum Walton in the Terracotta and Rosemary Green designs. I had these cut into a circle pattern in the centre of the common room, helping to create a nice eye-catching centre for the room." As well as its attractive designs, Marmoleum's sustainability credentials were a key

Interior Architect	Story Design
Location	London, UK



Marmoleum  
Walton  
terracotta



Tessera Struktur 1  
ROSA



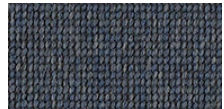
Tessera Struktur 1  
FLAMMA



Marmoleum  
Cocoa  
meringue



Marmoleum  
Cocoa  
milk chocolate



Tessera Struktur 1  
BLÅ



Marmoleum  
Walton  
rosemary green



Tessera Struktur 1  
MOSSA

