

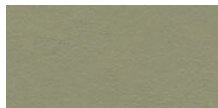
## Sylphar nv



Sylphar, a cosmetics company, primarily wanted a hygienic and low-maintenance floor covering suitable for their office and laboratory. Marmoleum was chosen for its antibacterial properties, practically seamless finish and wear resistance. The fact that the floor is also durable and has a sound-absorbing effect was a nice bonus. Within the range, three different types of Marmoleum were selected to perfectly match Sylphar's mood board. The possibility of working with different colours and shapes provided additional design possibilities and brought dynamism to the design.

Location	Deurle
Interior Architect	Intra-Interieur Het Kantoor van Morgen – Katrijn Teirlinck
Flooring Contractor	Tecnospace
Photographer	Debbie De Brauw

### Used Products



XX Marmoleum  
Walton  
rosemary green



XX Marmoleum  
Cocoa  
earl grey



XX Marmoleum  
Cocoa  
chocolate blues



Coral Brush  
hurricane grey

