

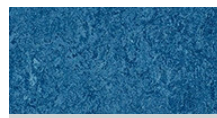

St. Patrick's School, Enniscorthy



St Patrick's School was designed as a research project by the Department of Education for special educational needs (SEN) design, allowing the Planning & Building Unit to set a benchmark for future special school projects. The design aims to maximise pupil's independence and provide a learning environment that offers a secure and inspiring educational experience. Of paramount importance is the sensory environment that provides a range of facilities to meet current needs and to adapt over time, designed and equipped with customised services, excellent acoustics and lighting, visual contrast and texture. Marmoleum and Surestep/Safestep safety vinyl floors were chosen as the collections offered the colours, designs and range of technical properties tailored to meet individual functionality requirements of a variety of rooms in this carefully designed, modern teaching facility. Aside from the proven long-lasting nature of Marmoleum, the best possible air quality, ease of maintenance, product support from a local Forbo team, as well as being a climate positive linoleum flooring, were deciding factors in using these floorings. • Floor Area: 5,913 sq.m

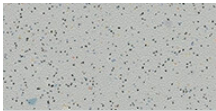
| | |
|--------------------|--|
| Projekta nosaukums | St Patrick's School |
| Adrese | Drumgold, Enniscorthy, Co. Wexford, Ireland |
| Arhitekts | Department of Education Planning & Building Unit |
| Celtnieks | Mythen Construction, Co. Wexford |
| Celtnieks | Bolster Flooring, Co. Waterford |
| Fotogrāfs | Paul Moore |

Izmantotie grīdas segumi

| | | | | | |
|--|---|---|---|--|---|
|  |  |  |  |  |  |
| Marmoleum Real green wellness | Marmoleum Real spa | Marmoleum Real blue | Marmoleum Fresco hunter green | Marmoleum Fresco leaf | Marmoleum Piano mellow yellow |



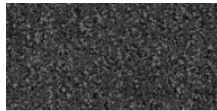
Marmoleum
Concrete
satellite



Safestep R11
smoke



Surestep Original
yellow green



Coral Classic
mouse grey



Nuway Tuftiguard
Heavy Duty
External

