

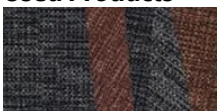
St Stephens School



St Stephen's School has two campuses Carramar and Duncraig catering to over 2,000 students from early years through secondary, recently completed the refurbishment and extension of its existing science building, making it WA's largest secondary science facility. Flotex planks were chosen for the school's main foyer, theatre, and various breakout areas. The school has a positive history with Flotex, having used it in sheet form for almost 30 years. Some spaces have been modernised over the years, moving to traditional loop carpet tiles, however, the launch of new, stunning modern designs in modular format convinced the team to revert to Flotex. Flotex is unique; it is a textile floor that performs like a resilient one, making it extremely hard-wearing and durable for intense use. Additionally, it is allergy and asthma-friendly, and slip-resistant when both dry and wet. Flotex is incredibly easy to clean. The tightly packed fibres reduce the potential for soiling deposits whilst the impermeable backing means it can be cleaned down to the base of the flock and then dried quickly, making Flotex a truly washable textile floor covering. Year after year Flotex maintains its visual and functional properties making it the ideal flooring solution for learning spaces.

Flooring contractor Apex Flooring

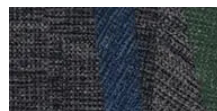
Used Products



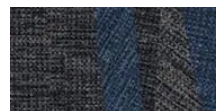
Flotex Converge planks radiant



Flotex Converge planks prism



Flotex Converge planks zenith



Flotex Converge planks aurora

