

School furniture, Ustron, Poland



The PILCH school furniture set from Ustron is a response to the challenges of modern education and the changing needs of users. The modular nature of the furniture allows for the creation of various arrangements in order to match the room equipment to the nature of the classes. For example, thanks to the appropriate arrangement of tables, you can make it easier for children to communicate during work carried out in groups. The benches are equipped with additional elements that, when unfolded, increase the working surface, which can be useful, among others, during art classes. Linoleum top finishes can also be used to minimize unwanted noise that can distract hearing-sensitive students. The racks have also been designed in a modular system, which makes it easy to adjust the furniture to the individual needs and dimensions of the classroom. Thanks to the use of regulation, the size of the furniture can be adjusted individually to the child's height, while meeting the requirements contained in the standards. Chairs and other furniture have elements painted with dry-wipe paint, on which you can write with chalk or a felt-tip pen. These elements can be used to play or, for example, sign a chair or drawer belonging to a specific child. The set includes: a chair, 1 and 2-person benches, a modular bookcase, a bench for disabled children and screens that act as portable boards. The sets have been designed in two sizes: for younger and older children. Thanks to the aesthetic value, interesting design and colors of the furniture and the use of high-quality materials, it is a solution not only for schools - Pilch furniture can also be an element of equipment for children's rooms.

Interior Designer	Klaudia Gołaszczuk, Michał Biernacki, Paweł Mularczyk Algorytm Design sp. z o.o.
Installation by	Roman Pilch Z.P.H. PILCH
Location	Ustron, Poland

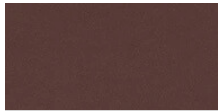
Used Products



Furniture
Linoleum color
overview



Furniture
Linoleum color
overview



Furniture
Linoleum color
overview



Furniture
Linoleum color
overview

