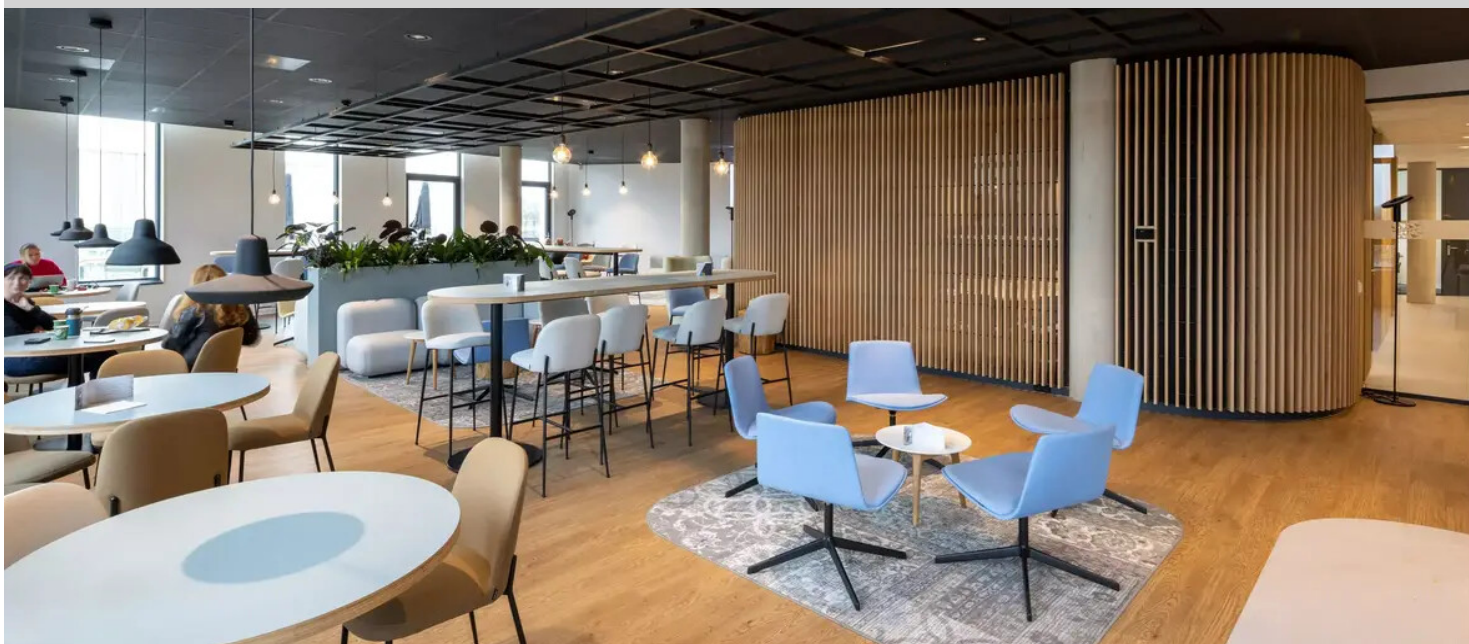


## Rodenborch College



The Rodenborch College is a large school with as many as 2,300 students. By giving the building three educational wings, RoosRos Architects gave the building a 'we-feeling', with a sense of small scale and surveyability. In the interior, we sought unity in the building from a limited, powerful colour palette, but with differences in the wings for identity and recognition. Each wing's ceiling slopes to the façade so that the extra-high windows can admit daylight deep into the classroom. The selected Marmoleum colours add to unity, recognition and a natural school atmosphere. Other important motives for the floor choice were attention to the indoor climate, durability, circularity and easy maintenance. Not surprisingly, Marmoleum easily meets the demands.

Projekta nosaukums	Rodenborch College
Adrese	Rosmalen, The Netherlands
Būvnieks	Burgland Bouw
Arhitekts	RoosRos Architecten, Oud-Beijerland
Ieklāšana	Ben de Graaff Project BV
Fotogrāfs	Lucas van der Wee

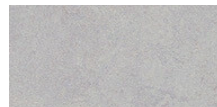
### Izmantotie grīdas segumi



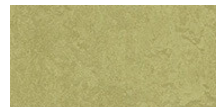
Allura Dryback 0.7  
Wood  
waxed oak



Marmoleum  
Cocoa  
white chocolate



Marmoleum  
Fresco  
moonstone



Marmoleum  
Fresco  
avocado



Marmoleum  
Fresco  
lemon zest



Marmoleum  
Concrete  
blue glow





