

Ritsumeikan University Kinugasa Campus Academeia Ritsumei 21



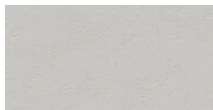
As a university, Ritsumeikan felt that it had a social responsibility to promote the development of a peaceful society, and therefore established the Kyoto Museum for World Peace to foster the understanding necessary to build a peaceful world. The Campus Ritsumei 21 plays a role in peace education by exhibiting many legacies of the war. After 30 years, a major renovation was needed for this international peace museum. During the project, the functions of the building were improved. The renovation of the exhibition halls included the installation of highly durable Marmoleum floors. Marmoleum offers a number of excellent design qualities appreciated by customers and museum visitors alike: its smooth texture, good colouring and high functionality.

Location	Kyoto-City, Japan
Building Contractor	B1F: Tanseisha Co., 1F: K&E Corporation
Architect	B1F: Tanseisha Co. 1F: Yasui Architects & Engineers
Interior Architect	B1F: Satomi Uchiumi, 1F: Kosuke Kikuchi
Flooring Contractor	DA OSAKA Corporation, Kyohei Corporation
Photographer	Shinwa Masanao Yabuuchi

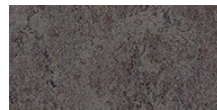
Used Products



Marmoleum
Concrete
satellite



Marmoleum
Walton
titanium



Marmoleum
Fresco
lava

