

ROC Landstede Harderwijk



The Care & Welfare section of the ROC Landstede school in Harderwijk, The Netherlands, was completed in 2015. The design by interior architect Caroline Molenaar gives the building a light and fresh look. The unique Flotex floors fit perfectly in the colorful design.

Interior Architect Caroline Molenaar Interieurarchitect Harderwijk

Photographer Higher View Mediaproducties, Harderwijk

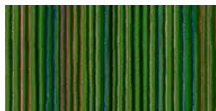
Installation by Vos project inrichting Harderwijk

Location Harderwijk, NL

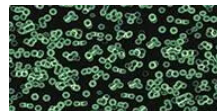
Used Products



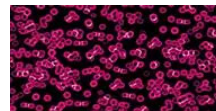
Flotex created by Sottsass Wool



Flotex created by Sottsass Wool



Flotex created by Sottsass Bacteria



Flotex created by Sottsass Bacteria

