

Rösttrommel Cafe Erlangen



The Rösttrommel Cafe is located in Erlangen and is a specialty caffeine easter egg with a focus on seasonal mint, so-called microlots. They used Marmoleum Vivace 3423. The completion is 2016.

Date of completion 2016

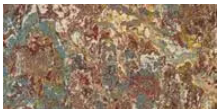
Location Nürnberg-Erlangen, Germany

Photographer Marvi Schock, Erlangen

Project name Rösttrommel Cafe, Erlangen

Reference Interior Architects NIEOS GmbH, Nürnberg

Used Products



Marmoleum
Vivace
painters palette

