

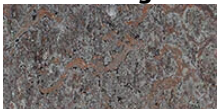
Queen Mary Elementary School



This project is a heritage restoration of a 1914 school. As linoleum is a flooring product used since 1860, it was an appropriate choice for the flooring. The architect chose bold geometric patterns for the reimagining of a heritage school to emphasize that this is a modern school in a heritage shell. The weld lines create a geometric pattern rather than blending into the field colours.

Arhitekts	DA Architects + Planners (Mark Ehman & James Kao)
Adrese	North Vancouver, BC, Canada
Fotogrāfs	Phillip Crocker
Celtnieks	DGS

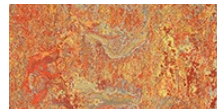
Izmantotie grīdas segumi



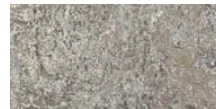
Marmoleum
Vivace
oyster mountain



Marmoleum
Vivace
sunny day



Marmoleum
Vivace
Asian tiger



Marmoleum
Vivace
surprising storm

