

**Queen Margaret University**



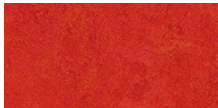
Sustainability is at the heart of Queen Margaret University's new relocate campus project. The main building and the combined students' union and sports centre achieved an 'excellent' BREEAM rating. At the time of its assessment, RE:Locate was the highest scoring university project in the UK. The campus is on sustainable parkland and aims to have as low a carbon footprint as possible and be a model of biodiversity. All materials were chosen for suitability, sustainability and durability and 10.000 square metres of Marmoleum were installed in the main campus building and in student accommodation.

Location Musselburgh, Edinburgh, United Kingdom

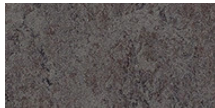
General contractor Carillion

Installation Veitchi, Edinburgh

**Used Products**



Marmoleum  
Fresco  
scarlet



Marmoleum  
Fresco  
lava

