

Office building IDEO, Rzeszów, Poland



The design of the IDEO office building in Rzeszów included architecture, interior architecture and external development. IDEO is a young dynamically developing IT company, which was to reflect the headquarters of the company. Light dynamic simple body and interior, suitable for young, creative people. Modern and functional Forbo carpets ideally match these assumptions. Applied floor coverings: Allura, Eternal Palette, Flotex.

Décorateur
d'intérieur

Magdalena Pelc

Flooring contractor MIMAR

Lieu

Rzeszow, Poland

Interior Architect

Robert Pelc

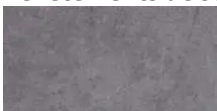
Photographe

Wojciech Krasnopolski

Architecte

ARCONT Pracownia Projektowa

Revêtements de sol utilisés



Eternal Concrete
beton



Eternal Palette
corn

