

## Office Expansion Calls For Sustainable Refurbishment Approach



Forbo Flooring Systems' Marmoleum was the product of choice for a creative breakout space at investment management firm, Triple Point. With its growing headcount, Triple Point appointed AW Spaces to create an environment that could accommodate the company's hybrid working strategy, whilst developing a light and warm aesthetic. Founded in 2004, Triple Point employ 215 people and manage over £2.7 billion of private, institutional and public capital across five distinct investment strategies: Social Housing, Energy, Digital Infrastructure, Private Credit, and Venture. Each of these strategies helps to solve a problem society faces, and each one creates opportunities for investors. With the company's increased headcount and the new hybrid working strategy, AW Spaces suggested increasing the size of the breakout area available to employees. The aim was to make this area feel different from the working environment, by incorporating warmer colours with a dynamic flooring design. Another important aspect for this project was the environmental impact. Lisa McLeod, Design Director at AW Spaces spoke on this, saying: "Sustainability was a big part of Triple Point's brief. As such, when it came to choosing a floor covering for the space, the sustainability aspect led us to look at products such as Forbo's Marmoleum. After discussing the sustainable flooring with Triple Point, where I also sent them a concept image of a design, we decided it was the perfect solution. "Not only did Marmoleum fit the sustainability requirements, but it's also available in a variety of contemporary designs that match in tone with each other, which allowed us to create a very dynamic space. Additionally, it's a really nice material to work with, which aided the installation process." Forbo's Marmoleum was specified in Terracotta, Titanium and Vintage Blue from the Marmoleum Walton range, and in Neptune Blue from Marmoleum Piano. Lisa commented on these choices, saying: "We chose these colours as they work beautifully together and coordinated with the joinery so it looked as though those elements rise from the ground. We also really liked the warmth of the Terracotta colourway and the brightness of Neptune Blue, which provided some contrast from each other without looking disjointed from the joinery they connected to. The choice of colours really helped us to convey the feeling that

Interior Design	AW Spaces
Installation	Medifloor



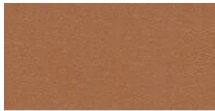
Marmoleum Piano  
Neptune blue



Marmoleum  
Walton  
titanium



Marmoleum  
Walton  
vintage blue



Marmoleum  
Walton  
terracotta

