

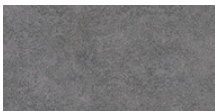
Nova Sede Mannz Arquitetos



"Moving to a larger space for our new architecture head office, we decided our flooring needed something more advanced in terms of technology and maintenance. Our architectural language is deeply inspired by nature. We wanted a connection between the lush greenery visible through our windows and the surface beneath our feet, making Flotex the perfect choice to bring our floor design to life. We believe that beyond the beauty of materials, daily comfort for those who use them is crucial. We found Flotex to be exceptionally soft to the touch yet remarkably strong, both meeting our needs. All factors considered, choosing Flotex flooring was the ideal decision; from its extensive range of colours and patterns to its durability and ease of installation".

| | |
|--------------------|-----------------------------------|
| Maîtrise d'ouvrage | PAZ Empreendimentos |
| Lieu | Blumenau - Santa Catarina, Brasil |
| Designer | Mannz Arquitetos |
| Photographe | MiaArktec |
| Applicateur | Canela Revestimentos |
| Architecte | Mannz Arquitetos |
| Maitrise d'oeuvre | Demex Ambientes |

Revêtements de sol utilisés



Flotex Colour
Calgary cement



Allura Flex Wood
honey elegant oak
(120x20 cm)

