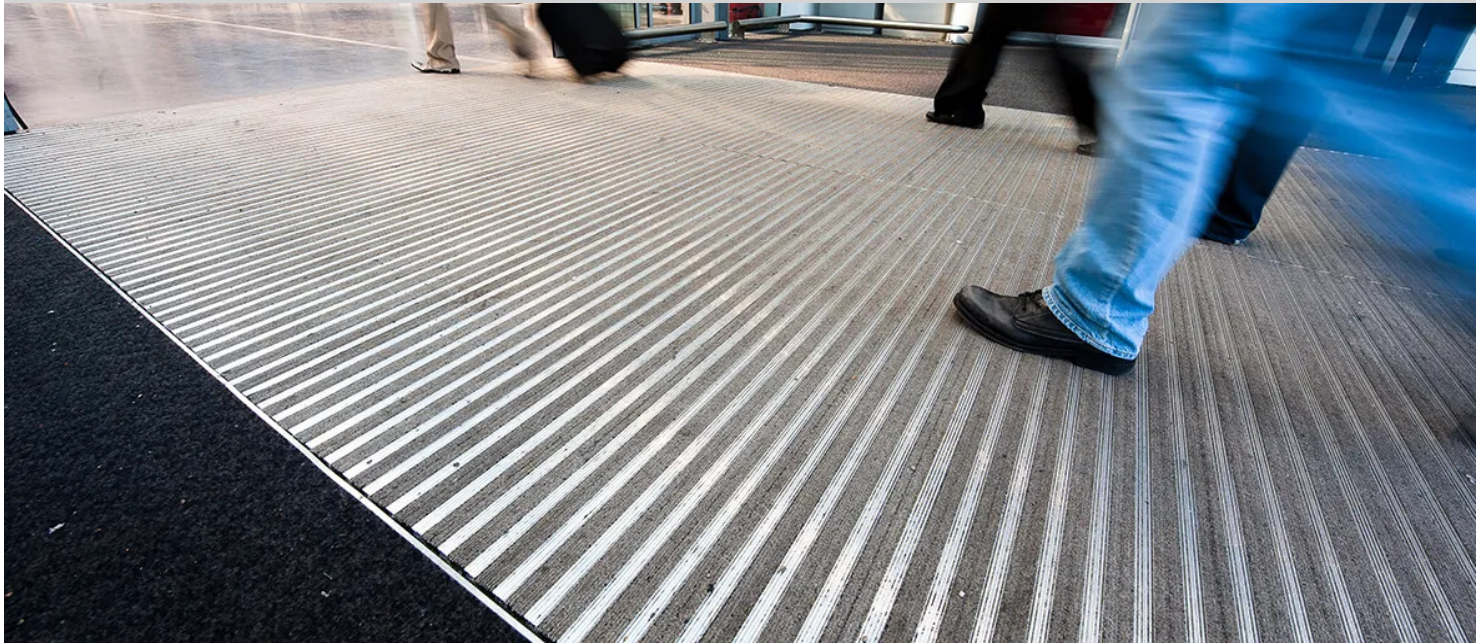


Network Rail Piccadilly



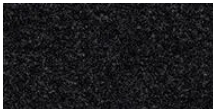
As part of one of the single largest entrance mat contracts ever placed in Europe, the well known British Network Rail station, Manchester Piccadilly, has undergone an extensive safety upgrade. The City's principal station accommodates over 98 million people annually so issues of safety were key to the specification process, and the entrance flooring system chosen had to perform to the highest level of functionality as well as add to the aesthetics of the station. It also had to meet the guidelines of the Equality Act in terms of providing easy access for disabled users. For these reasons, Forbo Flooring System's Nuway Tuftiguard HD and Coral textile entrance products were specified, offering a durable, attractive and effective integrated system for the entrance areas.

Location	Manchester, United Kingdom
Installation	Master Matting Installations, Halifax

Featured Flooring Products



Nuway Tuftiguard HD



Coral Brush vulcan black

