

**Lindehaven**



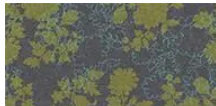
A nursing home is sometimes also called a 'care center'. - It was thus a central point when we decorated Lindehaven in Frederiksberg that we wanted to distance ourselves from the institutional sound of the nursing home and instead cultivate all the qualities associated with the security and care of a private sphere, explains the main person responsible for the interior design of Lindehaven, architect Maren Brostrøm Buchwaldt from SpacelInnovators. It was the design studio that, together with the building architects ERIK, was responsible for the interior design of the newly built care center Lindehaven. But at the same time, another requirement was made by Lindehaven's operations manager, Altiden: Easy cleaning of robust and durable materials. - What may sound like opposite wishes does not have to be, observes Maren Buchwaldt, who from previous assignments knew the textile coating Flotex from Forbo: - Which can contribute to cosiness and homeliness and yet has a strong, warm and robust tufted character that is easy to both vacuum and wash, explains the architect. Maren Buchwaldt: - The extra good thing about this textile is that it is not directional; a wheelchair runs equally unhindered on Flotex, regardless of the direction. Flotex in seven variants helps to solve it together with other floors with Forbo Marmoleum in the designs cork tree and leaf (3426 and 3260).

Maîtrise d'ouvrage	Frederiksberg Forende boligselskaber, KAB
Entrepreneur ( revêtement de sol) de référence	XPRT Gulvløsning ApS
Photographe	Søren Staun Pedersen & Christian Nygaard (grape)
Architecte	ERIK arkitekter A/S
Designer	SpacelInnovators

**Revêtements de sol utilisés**



Marmoleum  
Marbled  
leaf



Flotex floral  
Silhouette Mineral



Flotex floral  
Silhouette Mocha

