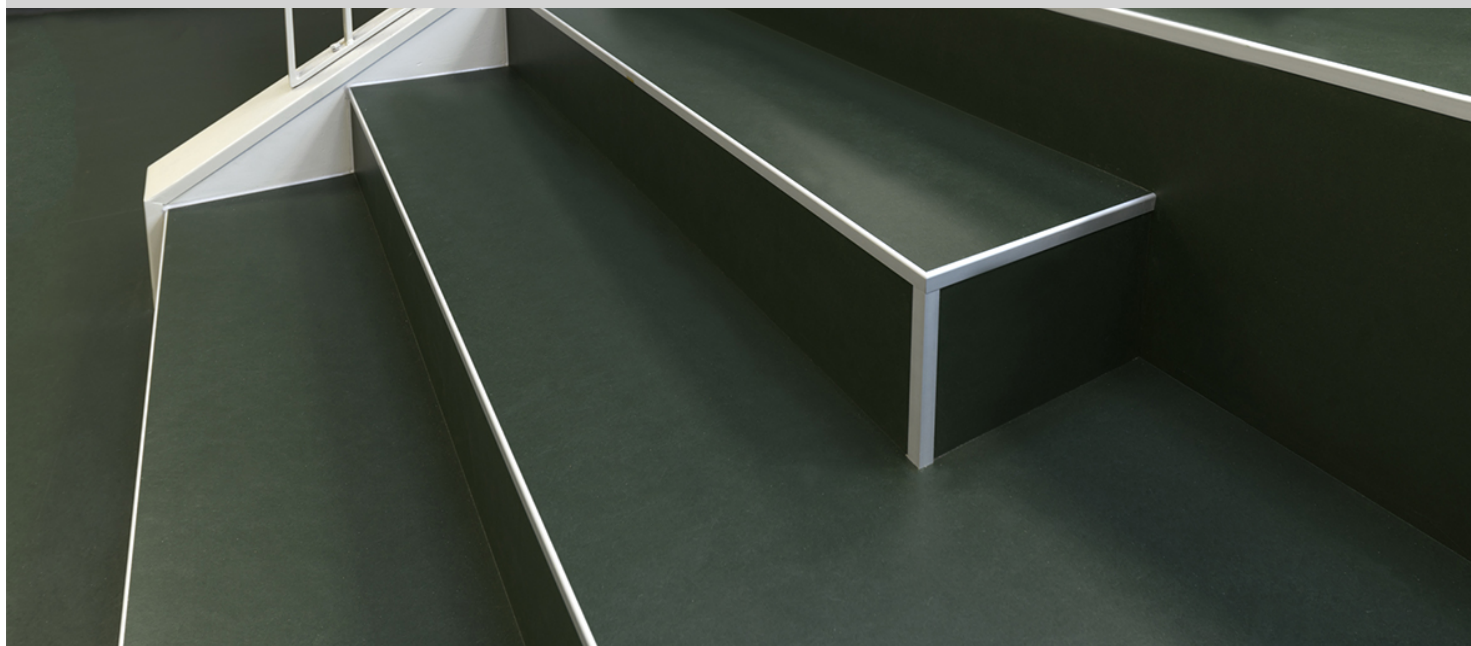


Lindbjerg School



LINDBJERGSKOLEN Building owner: Herning local government
User: Lindbjerg Skole for Hammerum and Gjellerup Architect:
Aarstiderne Architect – a part of Sweco Denmark A/S Floor
entrepreneur: Dansk Gulvmontage ApS Total entrepreneur: KPC
Herning A/S Product: Marmoleum Walton 3355 rosemary green,
3359 bottle green, 3358 petrol, 3363 lilac Photo: Peter Jørgensen

It is a rarity that the floor covering is allowed to speak when deciding the decoration and colour scheme. But that's how it went at the brand new Lindbjerg School in Hammerum by Herning. Lindbjergskolen is one of the country's 24/7 schools, built together with the existing sports facilities of the local community, which means that the buildings are open and accessible for activities around the clock. Here is a school, but also an educational learning centre, meeting house and public library as well as a well-functioning leisure life in halls and on ball courts. There is - you could say - constantly activity! In the basic story of the project, Aarstiderne Architect, part of Sweco Denmark, worked on the theme of the forest: The forest, carried as it is, for environmental reasons and sustainability and a place where man uses all their senses. - That is why we wanted a décor based on nature's colour range (the green and blue colour range), which Forbo's Walton linoleum just offers with the collection's colours such as 'rosemary green', 'bottle green' and 'petrol'. The linseed oil thus became the governing of the other choices, says architect and creative director at Aarstiderne Architect, Peter Kristiansen. Linoleum was the obvious choice for a design that will support both learning and movement. The floor is more than a floor; the floor forms an interior landscape and an integrated furniture, which stages the forest floor slopes and depressions in the open spaces. On selected surfaces, surrounded by seating terraces, messages can be projected for use in communication and teaching. It's the cool thing about linoleum; it can solve several tasks, it is robust and easy to keep, it is noise reducing, and then it is suitable to stay on - in teaching as well as in play, Peter Kristiansen explains. And using less traditional fixtures involves operating benefits; At the same time, built-in fixtures like this provide significant value for each building crown, emphasizes Peter Kristiansen. Danish Floor Assembly mounted approx. 10,000

Building ContractorHerning kommune

Architect Årstiderne Arkitekter – en del af Sweco Danmark A/S

Flooring ContractorDansk Gulvmontage ApS

Installation by KPC Herning A/S

Photographer Peter Jørgensen



Marmoleum
Walton
bottle green



Marmoleum
Walton
petrol



Marmoleum
Walton
rosemary green



XX Marmoleum
Walton
lilac

