

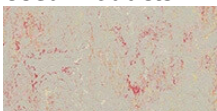
## Kyoto Women's University



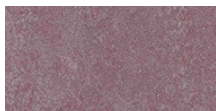
The founding philosophy and educational goals of Kyoto Joshi Gakuen (Kyoto Women's University) are based on Buddhist principles espoused by a Japanese monk named Shinran Shonin. These principles advocate the fostering of human spirituality through learning and enhanced sensitivity towards the lives of others. No fewer than 5000 m<sup>2</sup> of Marmoleum were installed in the various rooms at Kyoto Women's University. Ranging from modern colours with a classic blend from the Marmoleum Real collection to a unique Marmoleum Cocoa floor to the surprising Marmoleum Splash fruit punch colour that offers an overall light grey with hints of surprising colours peeking through.

Location	Kyoto, Japan
General Contractor	Nishimatsu Construction Co.,Ltd
Interior Architect	Nikken Sekkei
Interior Designer	Emoto Ryotaro (Nikken Sekkei)
Flooring Contractor	Honma Kenji
Installation by	Fukae Co.,Ltd
Photographer	Ohtake Yosuke

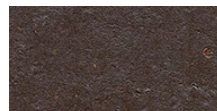
### Used Products



Marmoleum  
Splash  
fruit punch



Marmoleum Real  
plum



XX Marmoleum  
Cocoa  
dark chocolate

