

KLM Crew Training Centre



KLM Building 203/204, training center for pilots and cabincrew, has been renewed. For each room a Forbo floor has been chosen starting at the entrance where you can see a Coral Welcome. Marmoleum Walton and Striato are used in the flight safety hall with 2 brand new flight simulators, the offices and corridors.

| | |
|--------------------|---------------------------|
| Projekta nosaukums | KLM Crew Training Center |
| Adrese | Schiphol |
| Arhitekts | Sander Griffioen |
| Celtnieks | Maasdam Projectinrichting |
| Fotogrāfs | Michael van Oosten |
| Datums | juni 2019 |

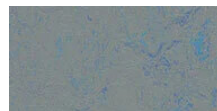
Izmantotie grīdas segumi



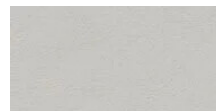
Coral Welcome
blue velvet



Marmoleum
Concrete
blue glow



Marmoleum
Concrete
blue shimmer



Marmoleum
Walton
titanium



Marmoleum
Walton
petrol



Marmoleum
Striato Original
withered prairie

