

K2 Korea



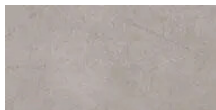
Outdoor brand K2 has moved its headquarters to a new building. With the relocation of the headquarters, a large store is opened on the first floor of the building. This store sells a variety of products produced by K2 Korea, including the representative brand K2, EIDER, W.ANGLE, DYNAFIT and Salewa. On the floor a combination of Forbo's Eternal and Sphera floor coverings have been installed. The concrete and stone-like colours have been chosen to create a sense of nature that fits with the outdoor store atmosphere.

Project name	K22 Korea
Location	Seoul

Used Products



Eternal Material
pebble stucco



Eternal Material
silver concrete



Sphera Evolution
shaded viridian

