

House of Life



The Hous of Life is a new building of a care facility in Solingen, Germany. The architect Großkemm | Richard + Monse | Molnar from Solingen had an uncommon construction to plan: a stationary care facility for 20 handicapped adults, aged 18 to 55 years. The architect created a building for 3 living groups, each of it provides enough space for 4 to 8 people. The project was named the "House of Life". The decor is a colorful mix of designer furniture and discounterware. "For us, the unicoloured eggplant purple linoleum suited perfectly in this concept, it is restrained, comfortable and matches all the decors and ornaments on the walls. At the same time it is the best underlay for the striped carpet in the common areas".

Location	Solingen, Deutschland
Date of completion	2012
Comissioned by	Ev. Altencentrum gGmbH, Solingen
Building contractor	Drei-Alt Solinger Kirchengemeinden
Photographer	Fotostudio Christoph Leniger, Paderborn
Project name	"House of Life", Stationäre Pflegeeinrichtung für 20 Erwachsene
Architect	Großkemm Richard + Monse Molnar, Architekten Innenarchitekten Stadtplaner
Installation	Kurt Kunze GmbH, Essen

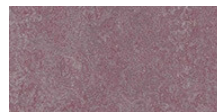
Used Products



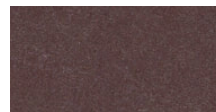
Marmoleum Real green wellness



Marmoleum Real chartreuse



Marmoleum Real plum



Marmoleum Walton eggplant purple

