

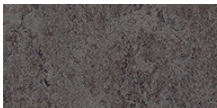
House in a Warehouse - Australie



Award winning transformation of an old warehouse shell into a warm environmentally focused home. Sustainable design utilising natural light, salvaged materials, Green roofs and functional layout.

Lieu	Melbourne, Australia
Architecte	Splinter Society Architecture - Melbourne Australia

Revêtements de sol utilisés



Marmoleum
Fresco
lava

