

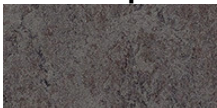
House in a Warehouse - Australië



Award winning transformation of an old warehouse shell into a warm environmentally focused home. Sustainable design utilising natural light, salvaged materials, Green roofs and functional layout.

Locatie	Melbourne, Australia
Architect	Splinter Society Architecture - Melbourne Australia

Gebruikte producten



Marmoleum
Fresco
lava

