

## Heinrich-Heine-University, Düsseldorf



On the campus of Heinrich Heine University, whose buildings date from the 1960s and 1970s, RKW+ Architektur modernized the complex of the Faculty of Philosophy and Humanities. A comprehensive remediation of pollutants was necessary, and to this end the building was completely renovated during ongoing operations and stripped back to its shell. The new design focuses on clear contrasts, both on the facade and inside. On the outside, the characteristic balconies were retained, and a vestibule with yellow-tinted windows welcomes students in a friendly manner. The stairs in the entrance also shine in yellow. The circulation areas are structured not only by the walls and furniture in the colors gray, black and yellow, but also significantly by the different colored flooring. Large-format lettering in clear typography on the walls identifies the rooms. In the corridors, lounge islands were created, which contrast with the otherwise lighter floor in the color warm grey by means of black linoleum flooring with fine marbling. The three lecture halls all feature maple wood seating. While a yellow linoleum floor was chosen for the two small lecture halls, the black marmoleum is repeated in the large hall, contrasting the light walls and preserved white ceiling canopies. The renovation has created a bright, pragmatic, but effective learning environment that provides orientation and plenty of space for philosophizing.

Location	Düsseldorf, Germany
Date of completion	2021
Architect	RKW Architektur +, Düsseldorf
Building Contractor	BLB NRW, NL Düsseldorf
Photographer	Marcus Pietrek, Düsseldorf

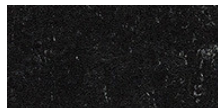
### Used Products



Marmoleum  
Fresco  
lemon zest



XX Marmoleum  
Piano  
warm grey



Marmoleum  
Fresco  
black

