

Gwacheon Education Library



Forget the old dull, dark library. It's the lively Gwacheon Education Library, decorated with marmoleum and sphaera. If you've ever wanted to see Marmoleum and Sphaera, make sure to visit when you have time. It is a library complete with colorful flooring.

Lieu

Gyeonggi

Revêtements de sol utilisés



Marmoleum
Walton
Berlin red



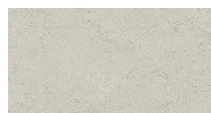
Marmoleum
Fresco
leaf



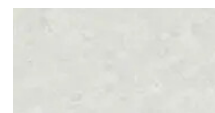
Sphaera Element
kelp



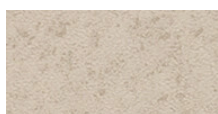
Marmoleum Real
mist grey



Marmoleum
Fresco
silver shadow



Sphaera Element
white



Sarlon 19 dB
Material
ivory canyon



